



12-1907

Mandan, 1907

Sanborn Map Company

[How does access to this work benefit you? Let us know!](#)

Follow this and additional works at: <https://commons.und.edu/sanborn-maps>

Recommended Citation

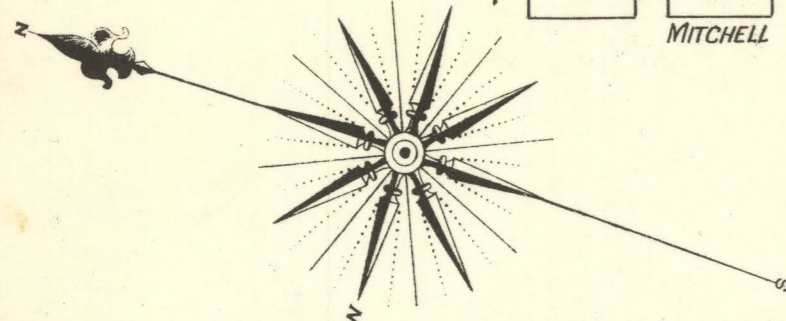
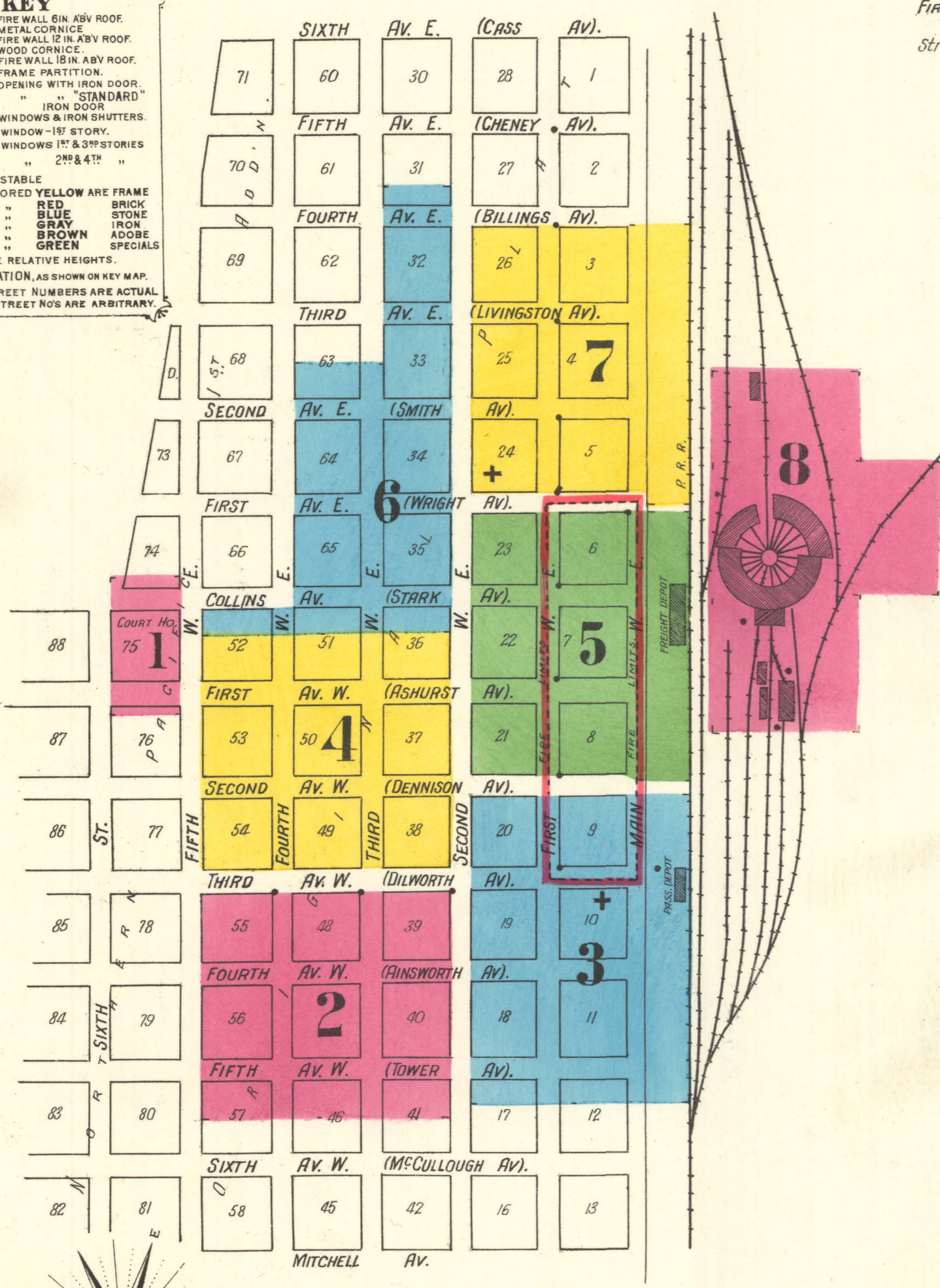
Sanborn Map Company, "Mandan, 1907" (1907). *Sanborn Maps of North Dakota*. 202.
<https://commons.und.edu/sanborn-maps/202>

This Book is brought to you for free and open access by the Elwyn B. Robinson Department of Special Collections at UND Scholarly Commons. It has been accepted for inclusion in Sanborn Maps of North Dakota by an authorized administrator of UND Scholarly Commons. For more information, please contact und.common@library.und.edu.



WATER FACILITIES: Source of supply - Heart River. Worthington duplex at EP at R.R. Pump Ho. capacity 700 bls per hour. Pump owned by N.P.R.R. Co. Pipe system and hydr. owned by the town. Nightman at pump ho. Domestic pressure from R.R. W. Tank 18 lbs; direct fire pressure 100 lbs. One mile of 6" Mains - 20-22 double fire hydr. Water used for fire purposes only. FIRE DEPT.: Volunteer; 56 members. 2000' 2 1/2" hose. Two hose houses. Fire alarm: whistle at R.R. Shops. One H & L. Truck. Three hose carts. Streets not paved. Town site level South of Fifth St. Public lights: elec.

KEY: FIRE WALL 6 IN. ASB. ROOF. METAL CORNICE. FIRE WALL 6 IN. ASB. ROOF. WOOD CORNICE. FIRE WALL 6 IN. ASB. ROOF. FRAME PARTITION. OPENING WITH IRON DOOR. "STANDARD" IRON DOOR. WINDOWS & IRON SHUTTERS. WINDOW - 18" STORY. WINDOWS 1st & 3rd STORIES 27 1/2 & 47". STABLE. BUILDINGS COLORED YELLOW ARE FRAME BRICK STONE IRON ADobe SPECIALS. (S) INDICATE RELATIVE HEIGHTS. FIRE STATION, AS SHOWN ON KEY MAP. ALTERNATE STREET NUMBERS ARE ACTUAL. CONSECUTIVE STREET NOS ARE ARBITRARY.



INDEX.

Table with columns for STREETS, SPECIALS, and various lot numbers. Includes entries like 'Fourth Street, W.', 'Ainsworth Ave.', 'Billings Ave.', 'Collins Ave.', 'Demmon Ave.', 'Fifth Ave.', 'First Ave.', 'Fourth Ave.', 'Stark', 'Smith', 'Stark', 'Third Ave.', 'High School', 'Haight Lumb. & Mach'y Co.', 'Hotel Nigey'.

* Indicates only one side of Street shown.

