



9-1910

Pembina, 1910

Sanborn Map Company

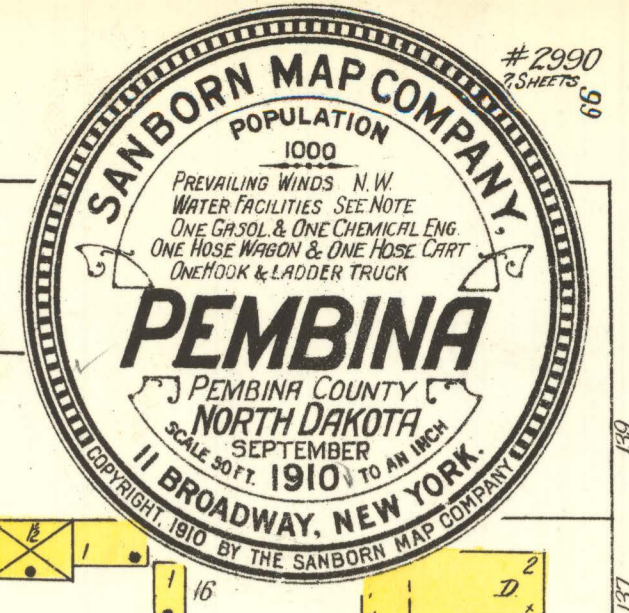
[How does access to this work benefit you? Let us know!](#)

Follow this and additional works at: <https://commons.und.edu/sanborn-maps>

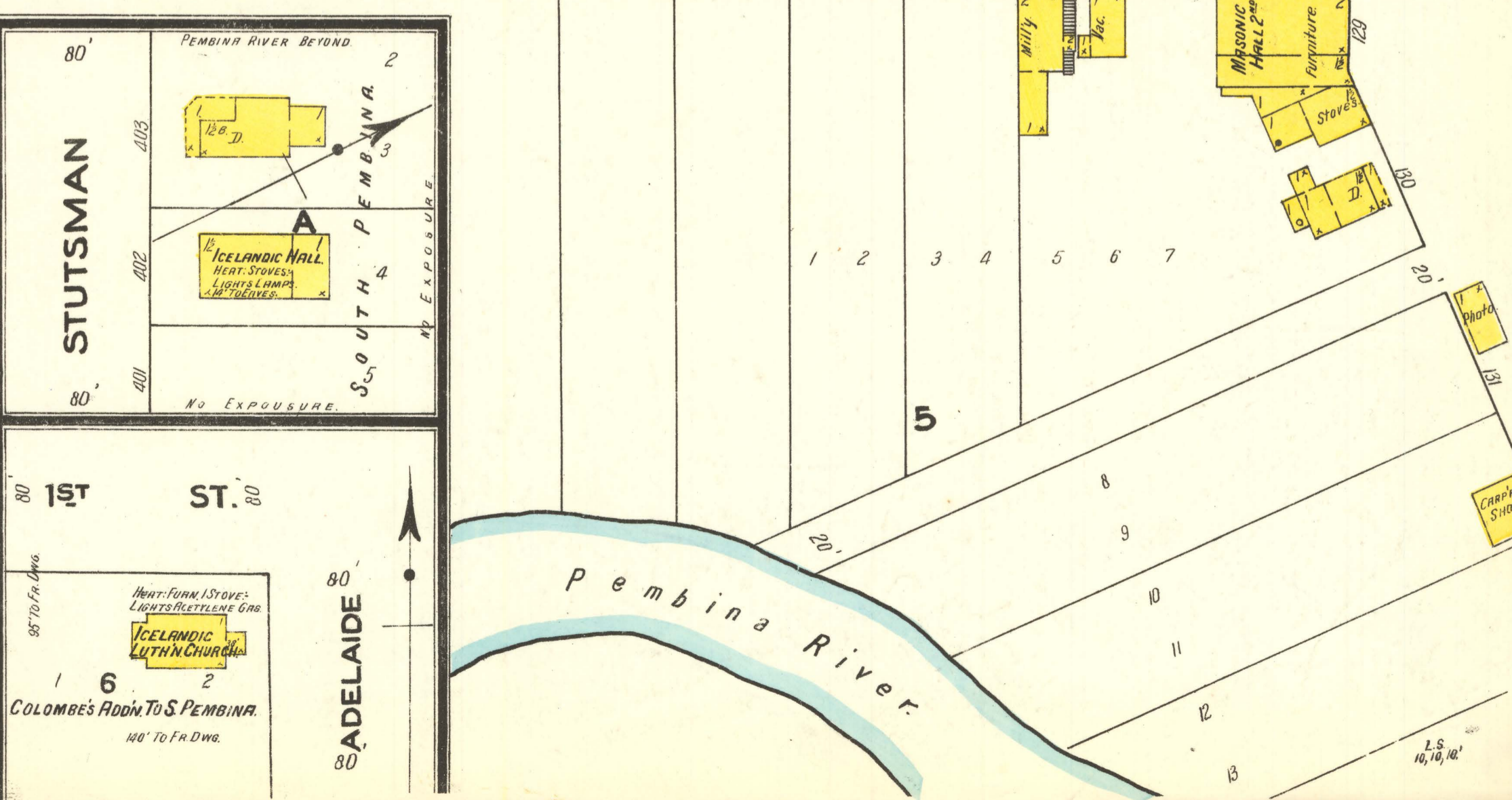
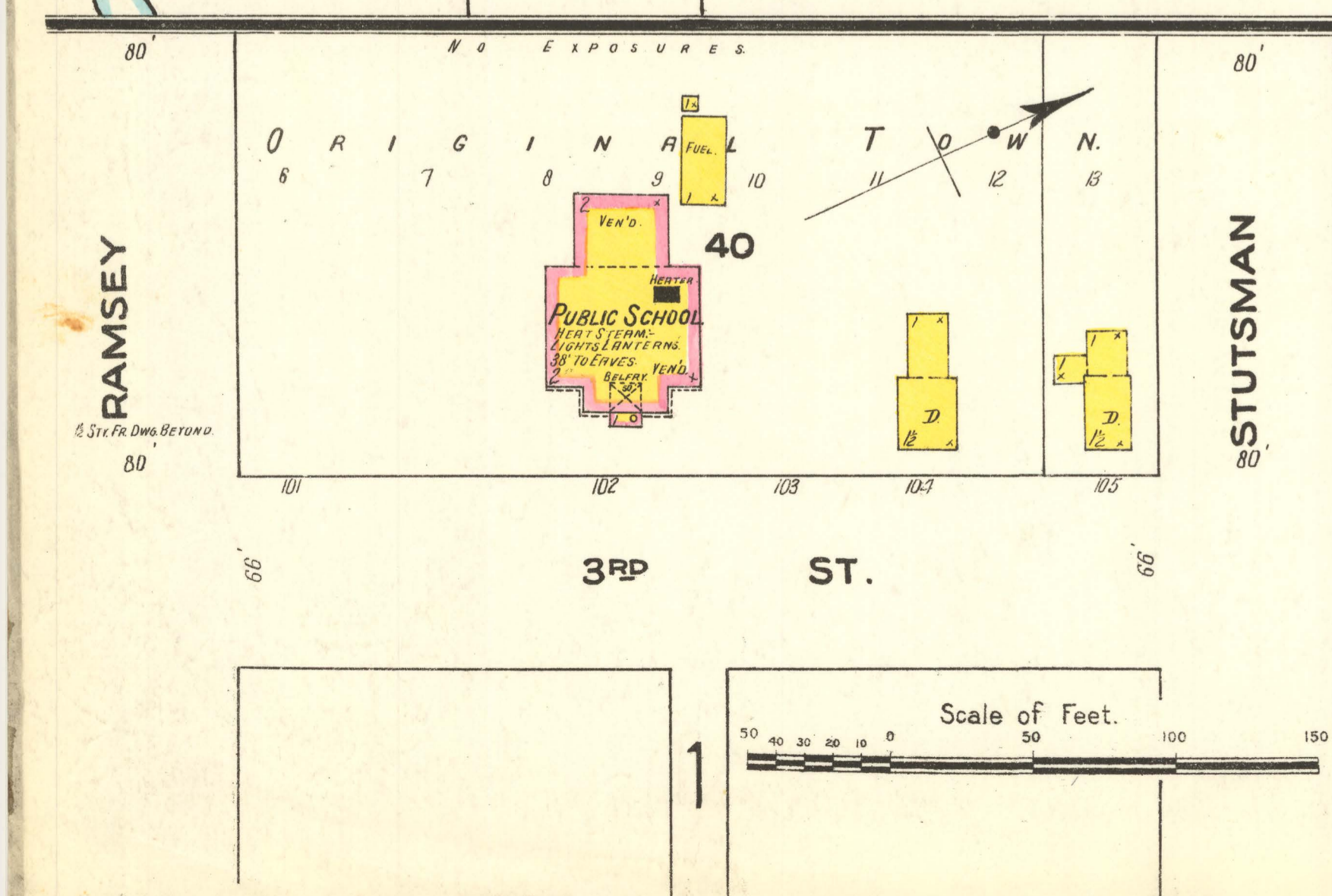
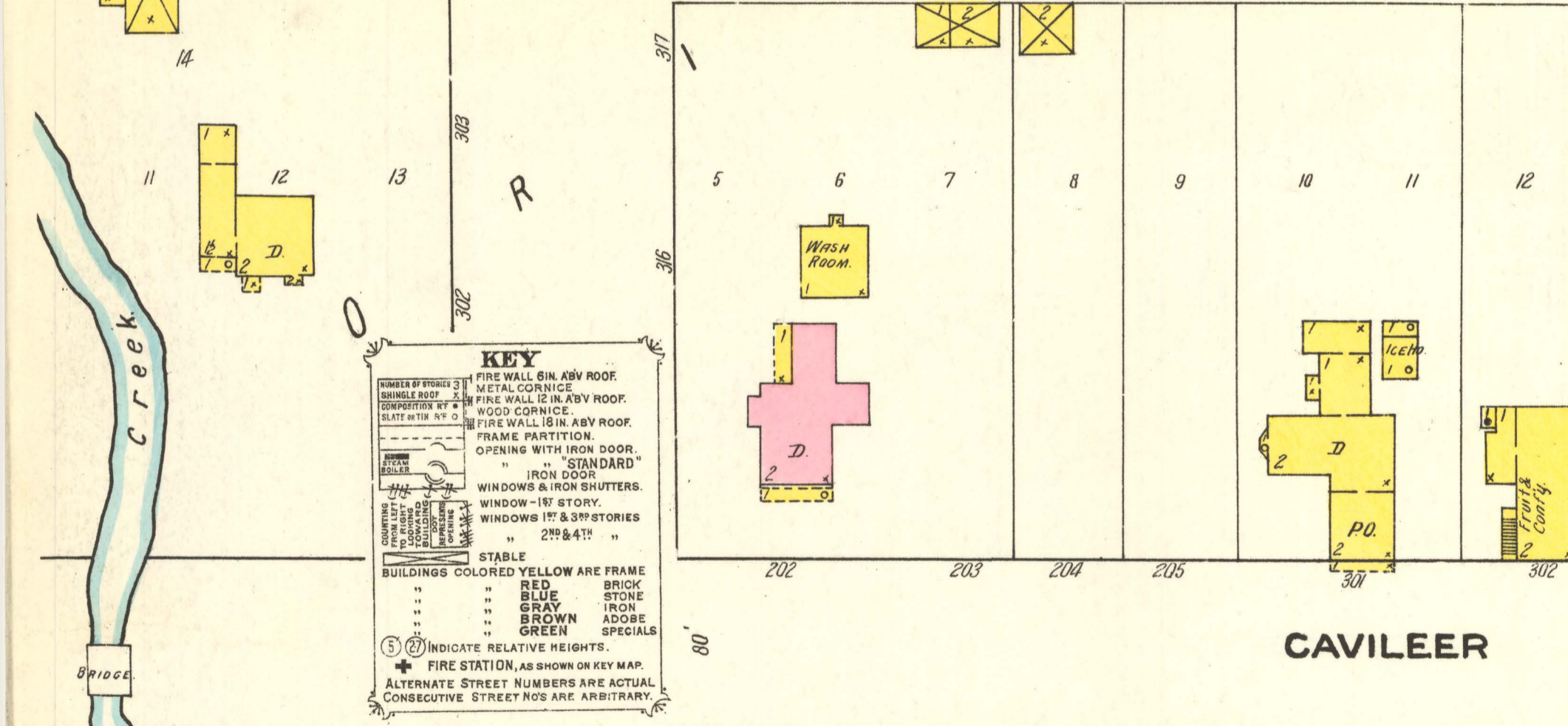
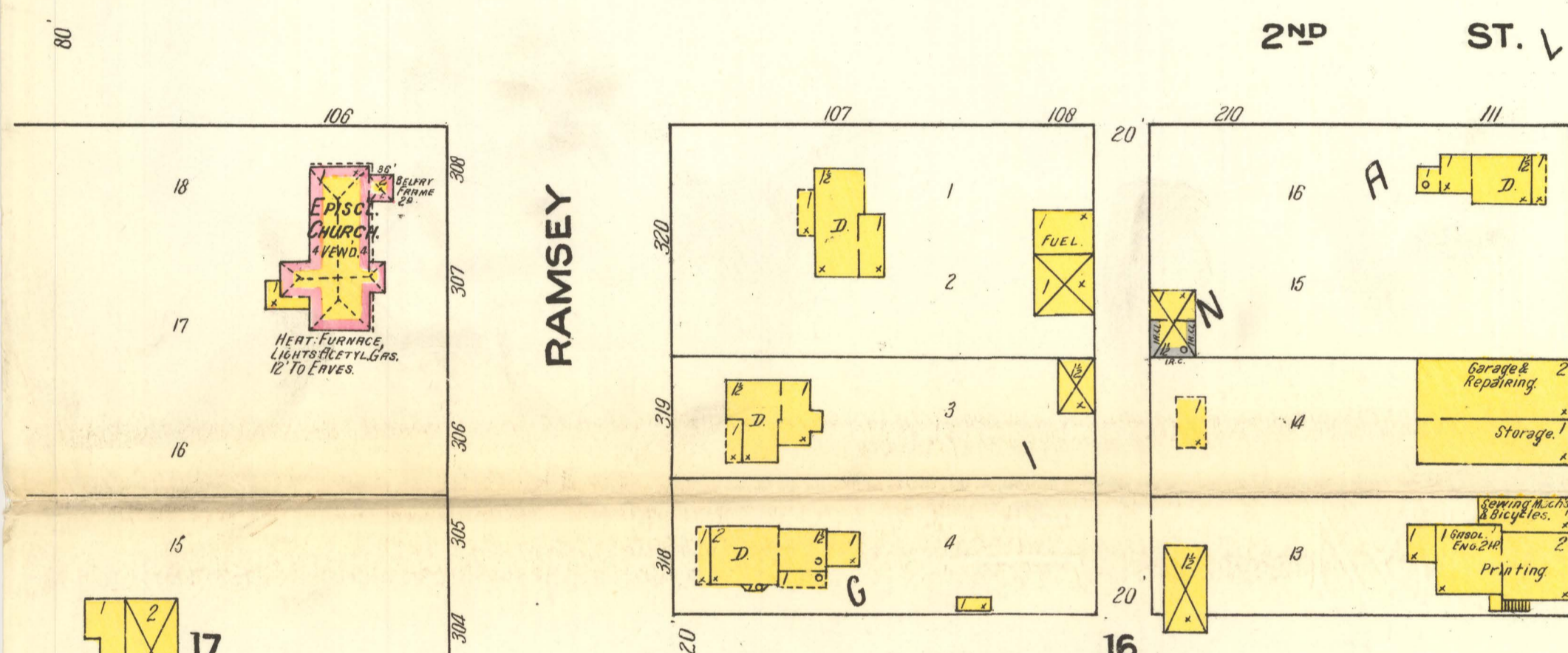
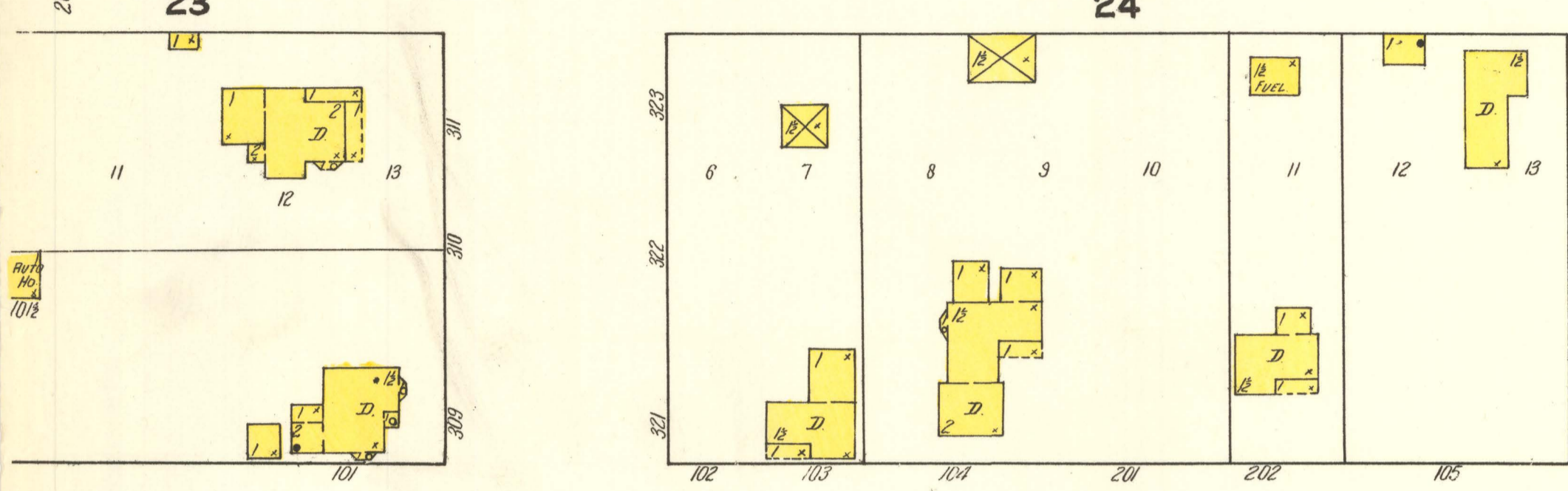
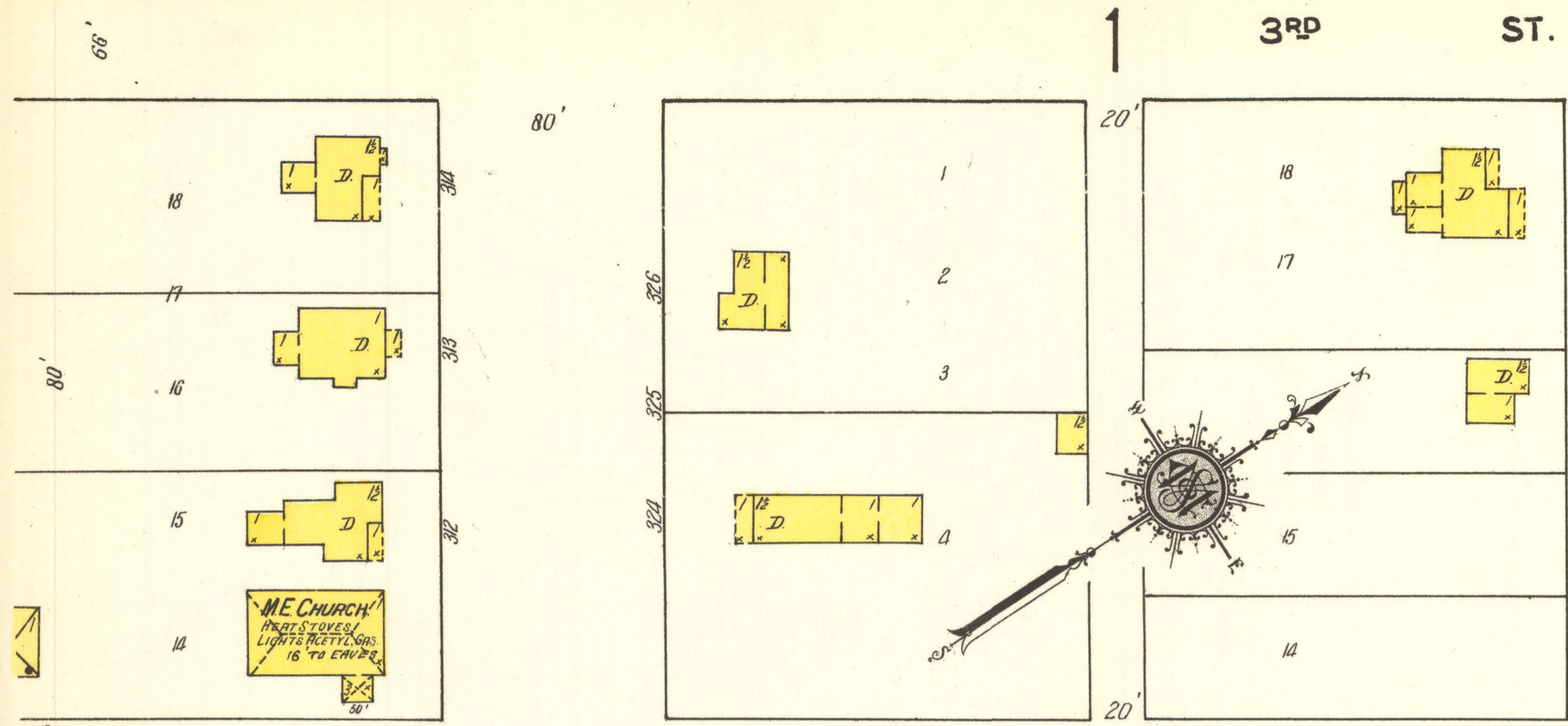
Recommended Citation

Sanborn Map Company, "Pembina, 1910" (1910). *Sanborn Maps of North Dakota*. 176.
<https://commons.und.edu/sanborn-maps/176>

This Book is brought to you for free and open access by the Elwyn B. Robinson Department of Special Collections at UND Scholarly Commons. It has been accepted for inclusion in Sanborn Maps of North Dakota by an authorized administrator of UND Scholarly Commons. For more information, please contact und.common@library.und.edu.



© Clf 18800
NOV 18 1910



RAMSEY

STUTSMAN

CAVILEER

ROLETTE

KEY
FIRE WALL BIN, IRON ROOF
METAL CORNICE
FIRE WALL, IRON ROOF
WOOD CORNICE
FIRE WALL, IRON ROOF
FRAME PARTITION
OPENING WITH IRON DOOR
"STANDARD"
IRON DOOR
WINDOWS & IRON SHUTTERS
WINDOW-18" STORY
WINDOWS 17" & 37" STORIES
27 1/2" & 47"
STABLE
BUILDINGS COLORED YELLOW ARE FRAME
RED BRICK
BLUE STONE
GRAY IRON
BROWN ADobe
GREEN SPECIALS
INDICATE RELATIVE HEIGHTS
FIRE STATION, AS SHOWN ON KEY MAP
ALTERNATE STREET NUMBERS ARE ACTUAL
CONSECUTIVE STREET NOS ARE ARBITRARY.

Scale of Feet.
0 50 100 150