



11-1907

Pembina, 1907

Sanborn Map Company

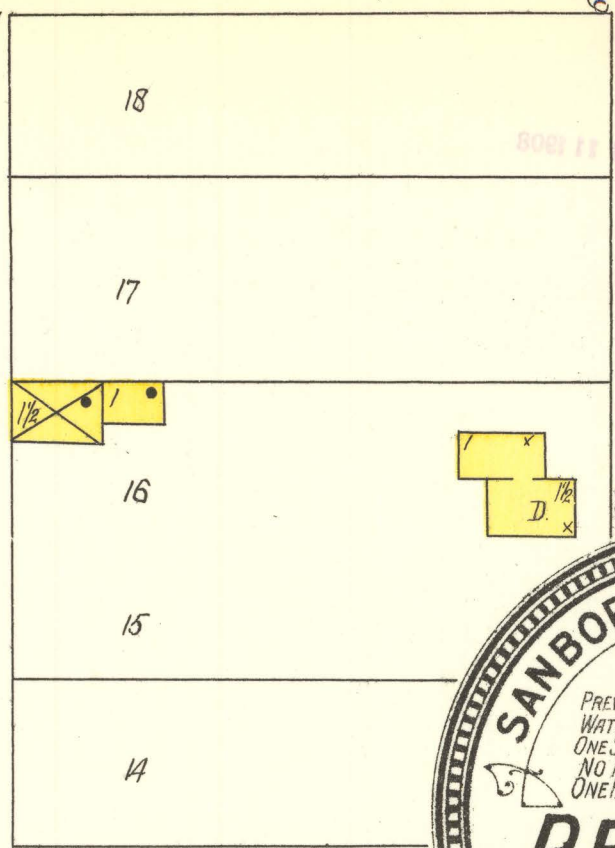
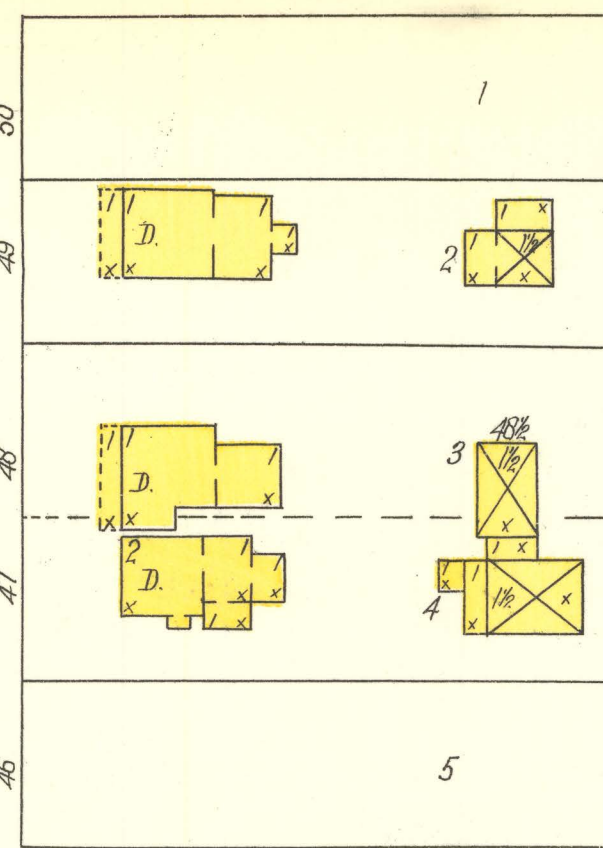
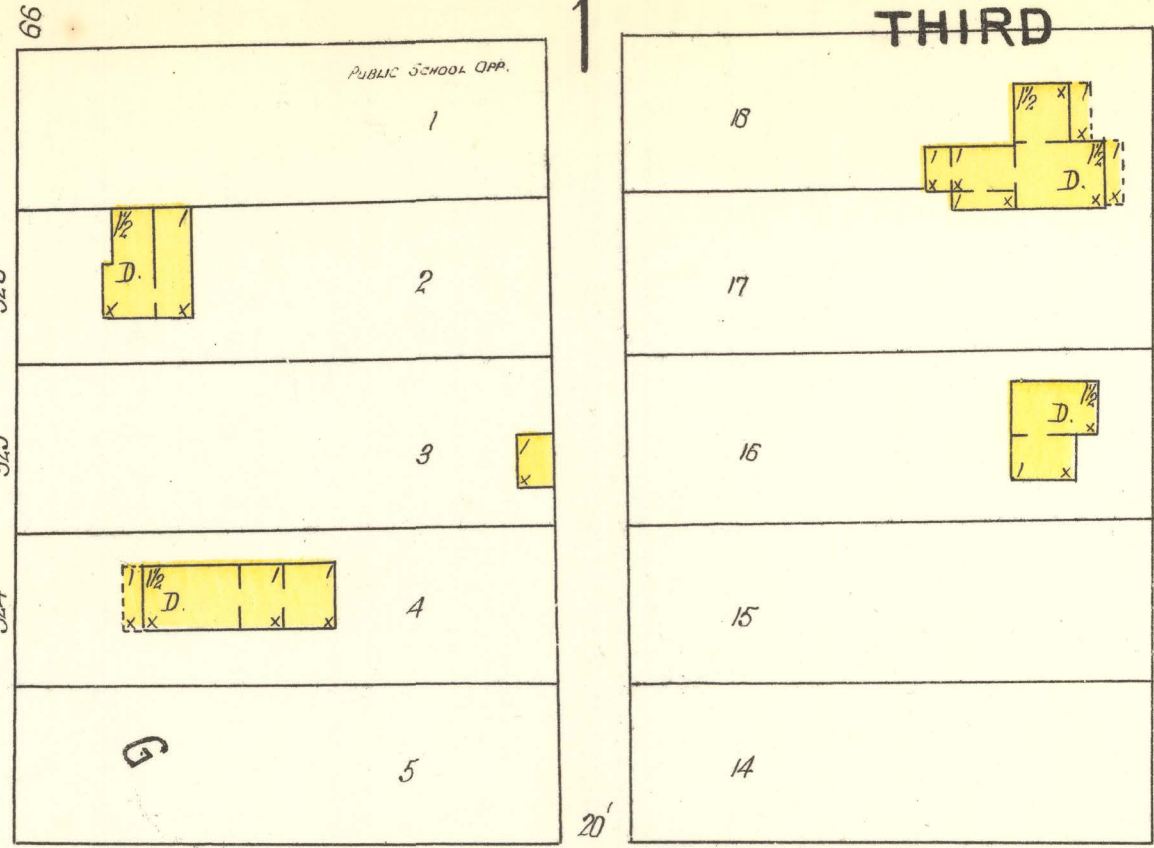
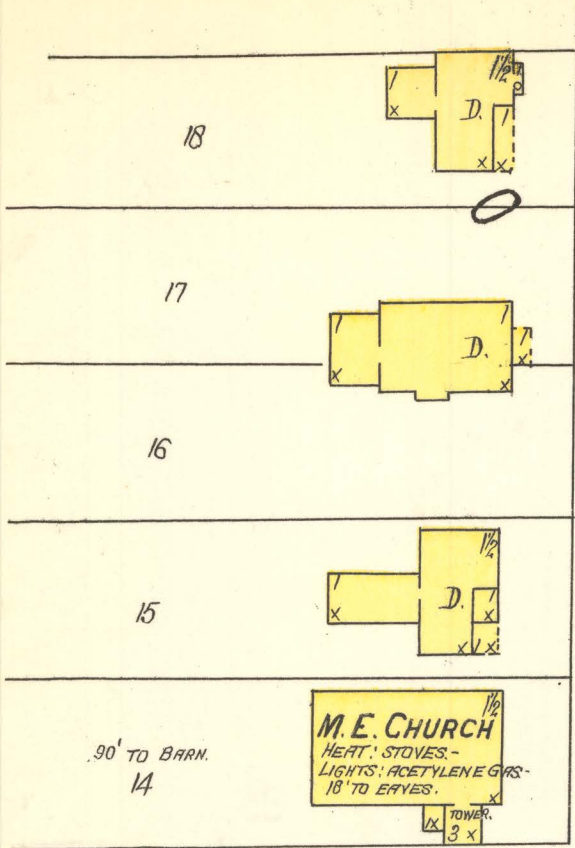
Follow this and additional works at: <https://commons.und.edu/sanborn-maps>

[How does access to this work benefit you? Let us know!](#)

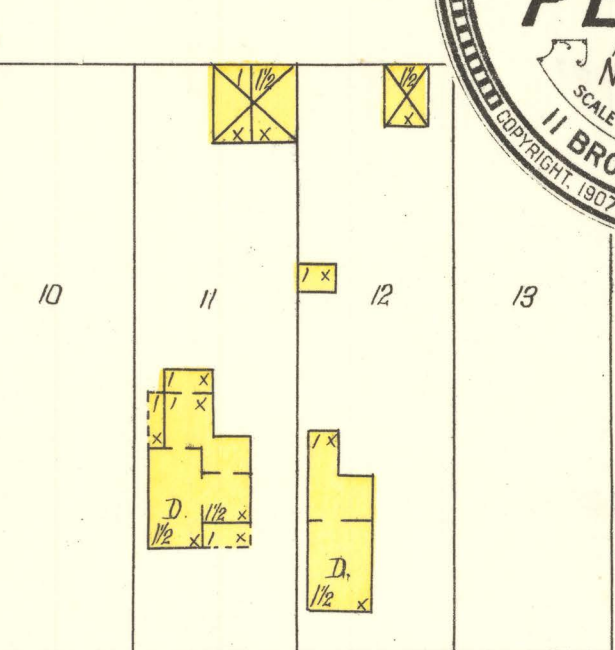
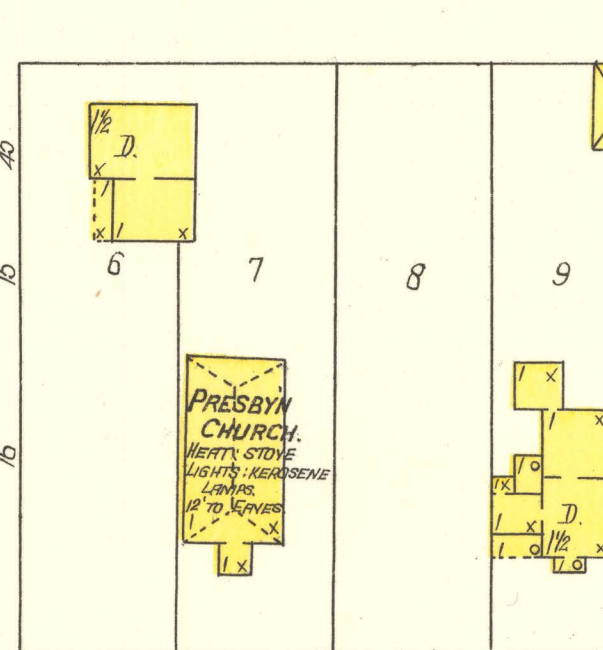
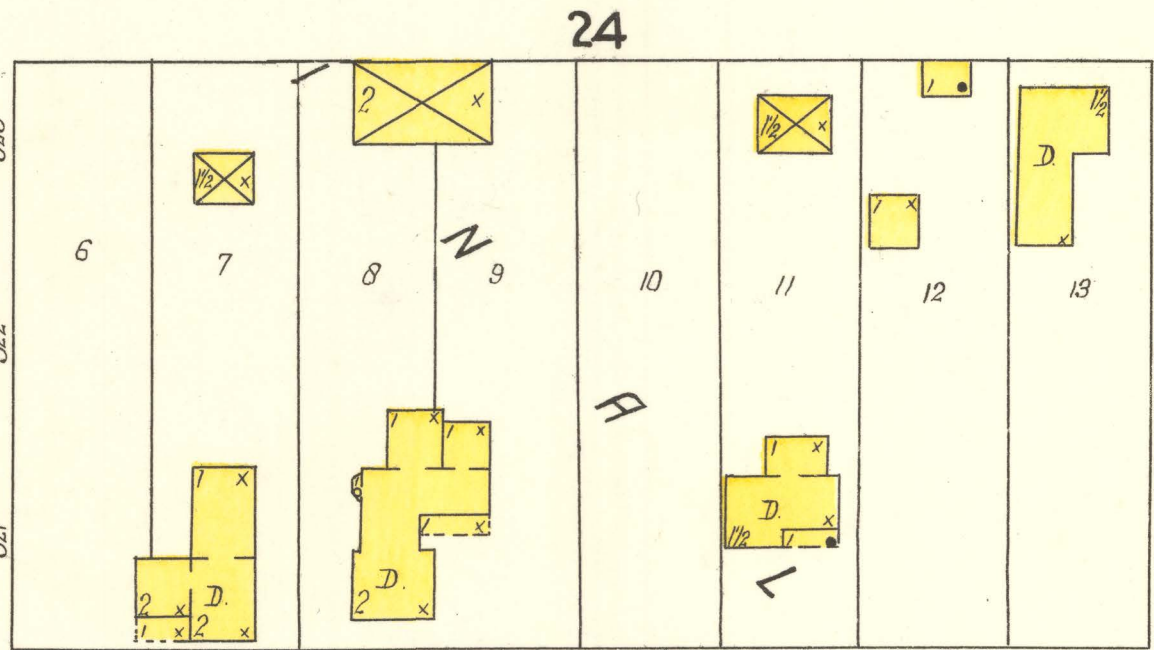
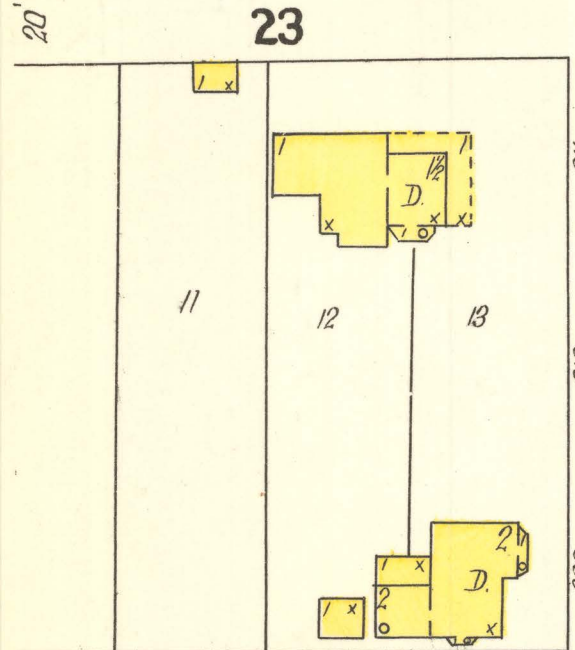
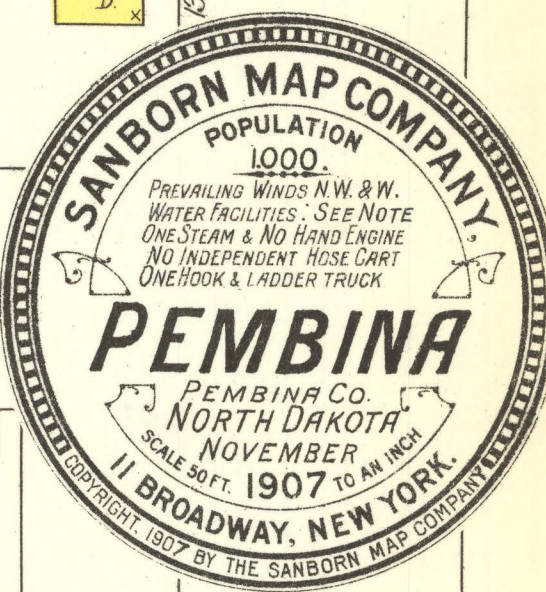
Recommended Citation

Sanborn Map Company, "Pembina, 1907" (1907). *Sanborn Maps of North Dakota*. 177.
<https://commons.und.edu/sanborn-maps/177>

This Book is brought to you for free and open access by the Elwyn B. Robinson Department of Special Collections at UND Scholarly Commons. It has been accepted for inclusion in Sanborn Maps of North Dakota by an authorized administrator of UND Scholarly Commons. For more information, please contact und.common@library.und.edu.

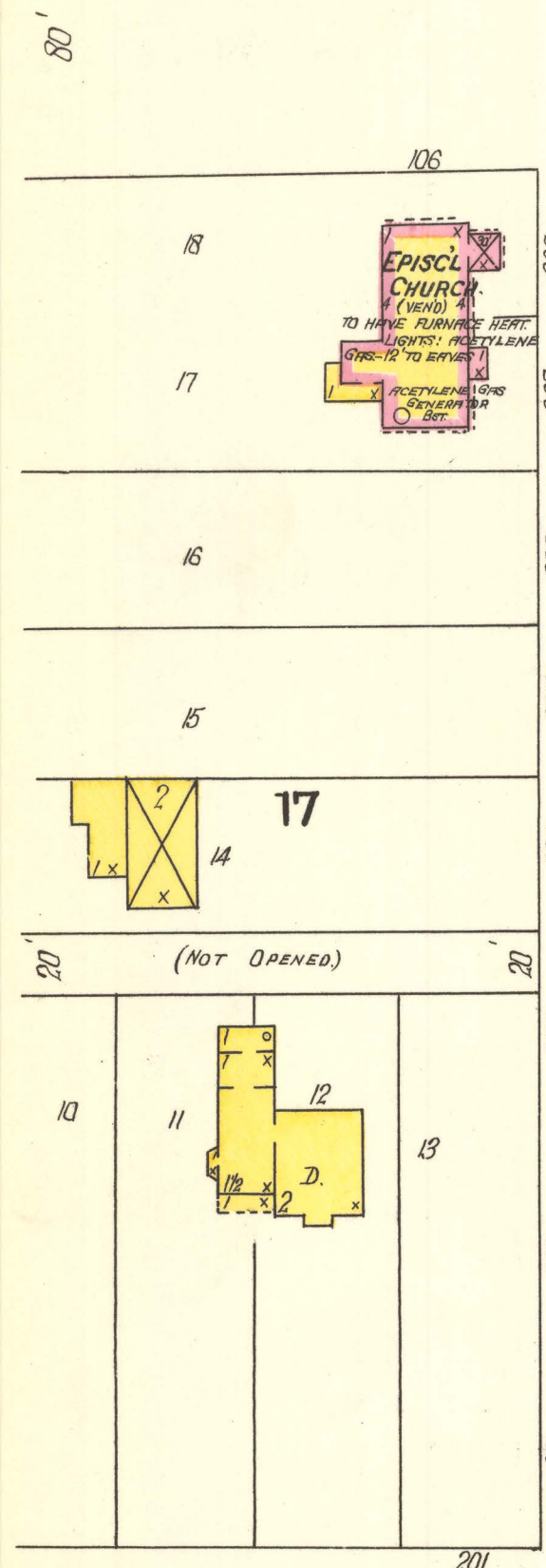


LIBRARY OF CONGRESS
Two Copies Received
JAN 13 1908
CLASS E 11.005
COPY 2

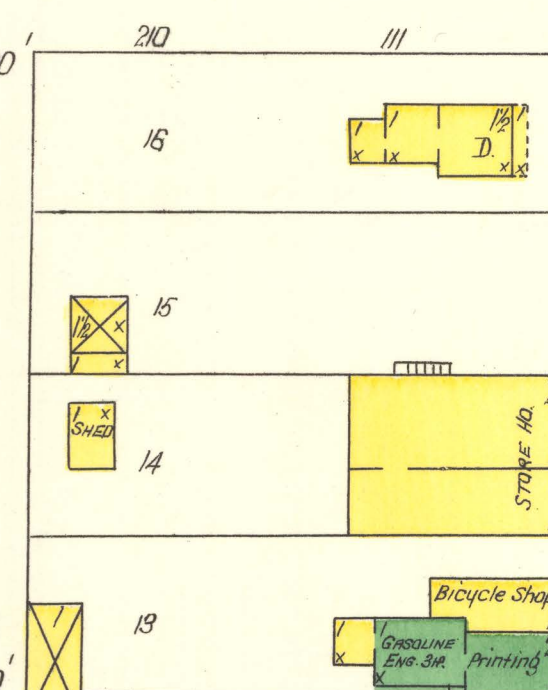
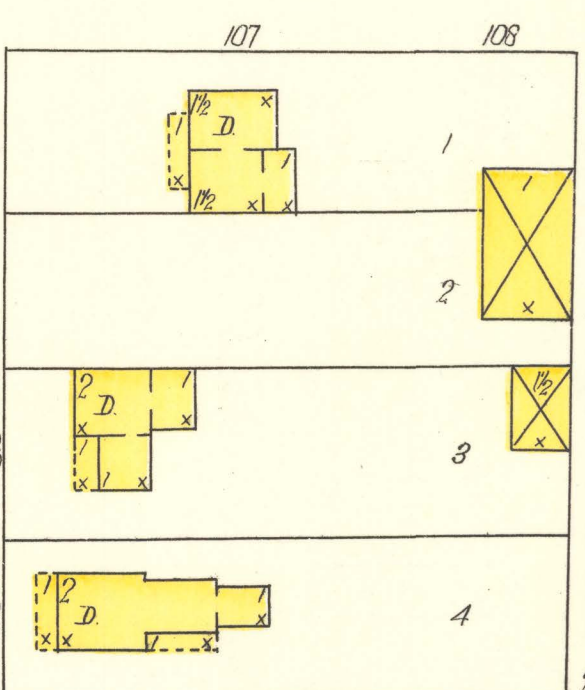


WATER FACILITIES
Supply from Pipe 600 Barrel Cisterns -
Pemberia and Red Rivers Accessible.
FIRE DEPT. Vol. 18 Members - 1 Waterous Steamer,
1 Hose Cart, 1 Hose Wagon - 1 H&L Truck - 1000
2 1/2 gallon Hose - Alarm Bell on 30 tower.
Streets 80' wide - Not Paved - Public Lighting -
Acetylene gas.

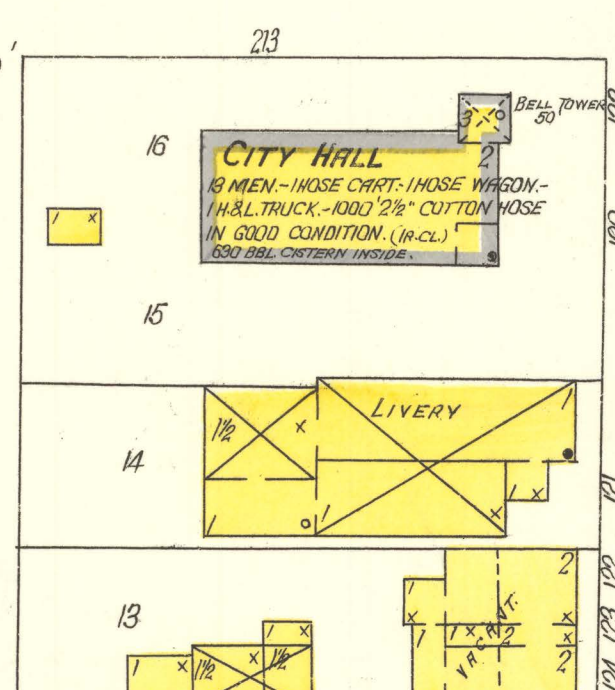
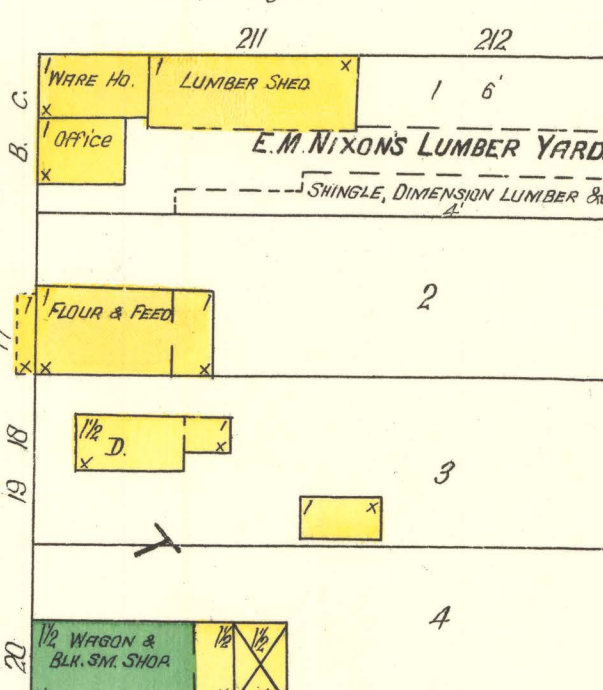
Map Division
FEB 4 1908
Library of Congress



RAMSEY

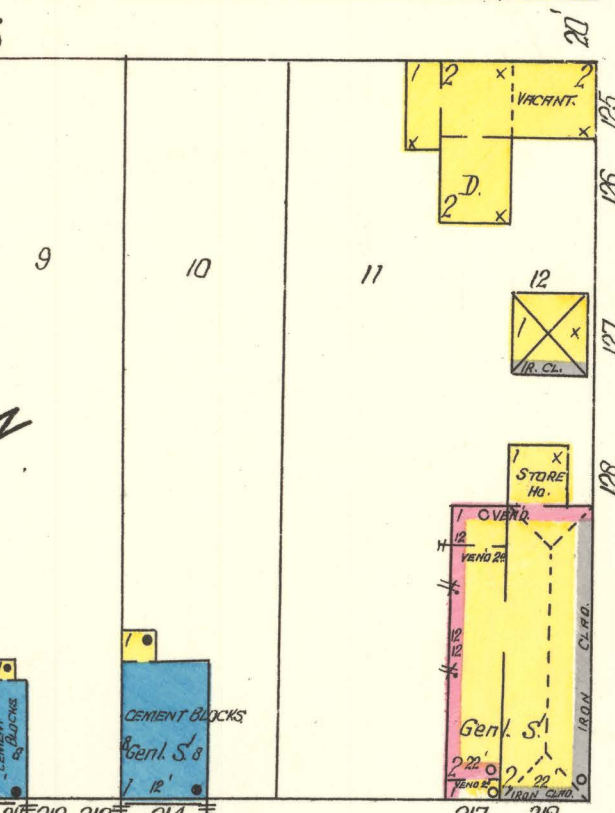
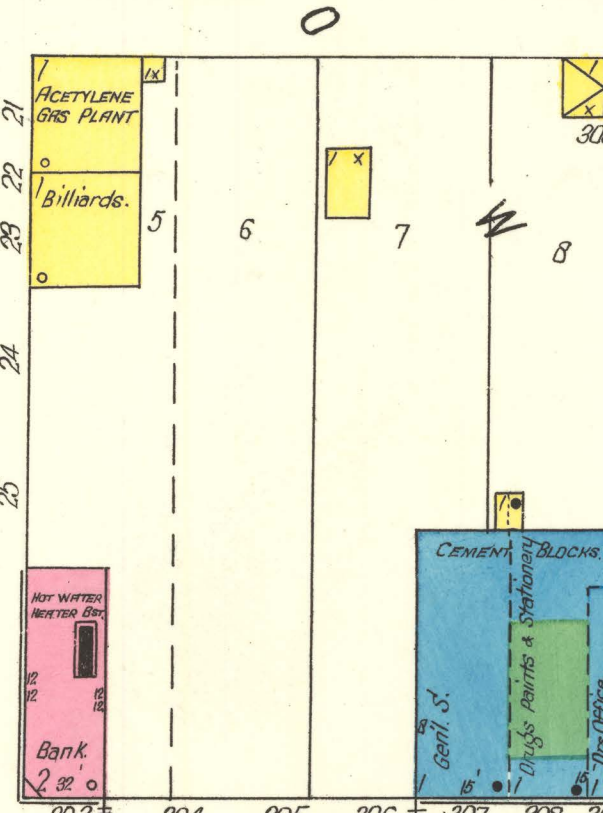
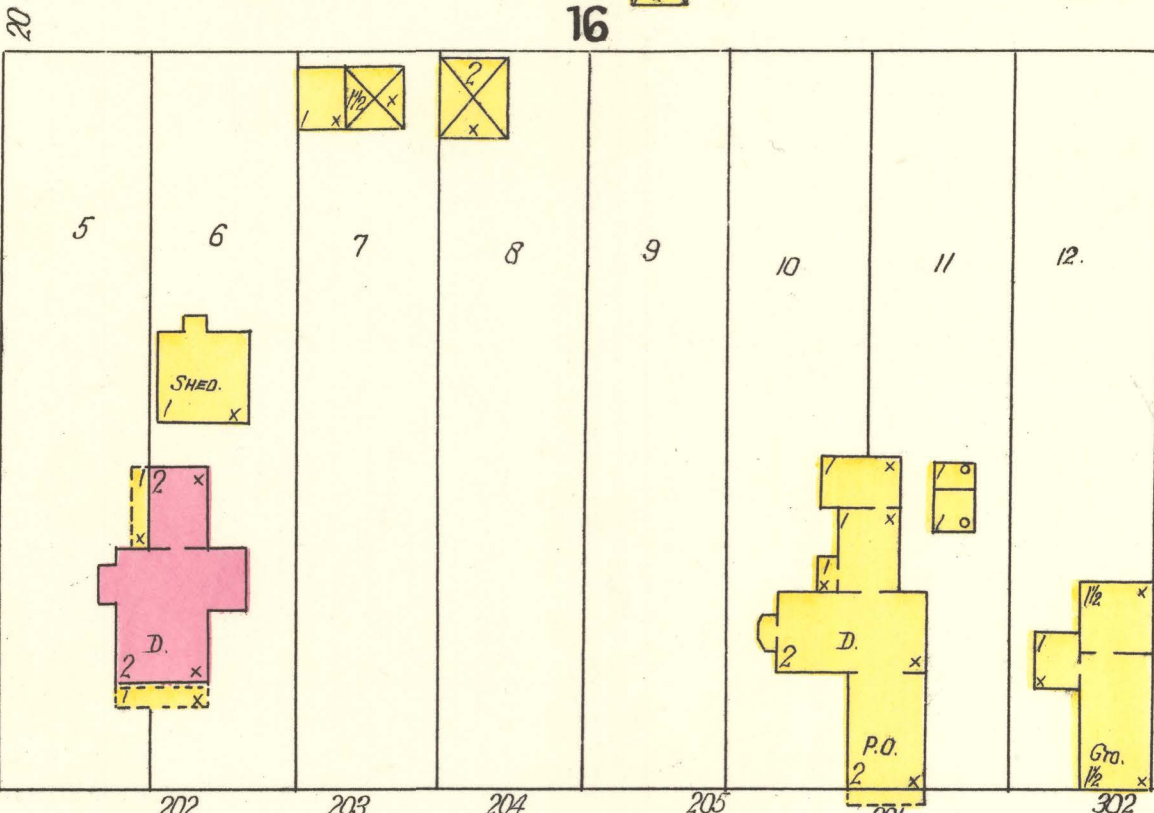


STUTSMAN

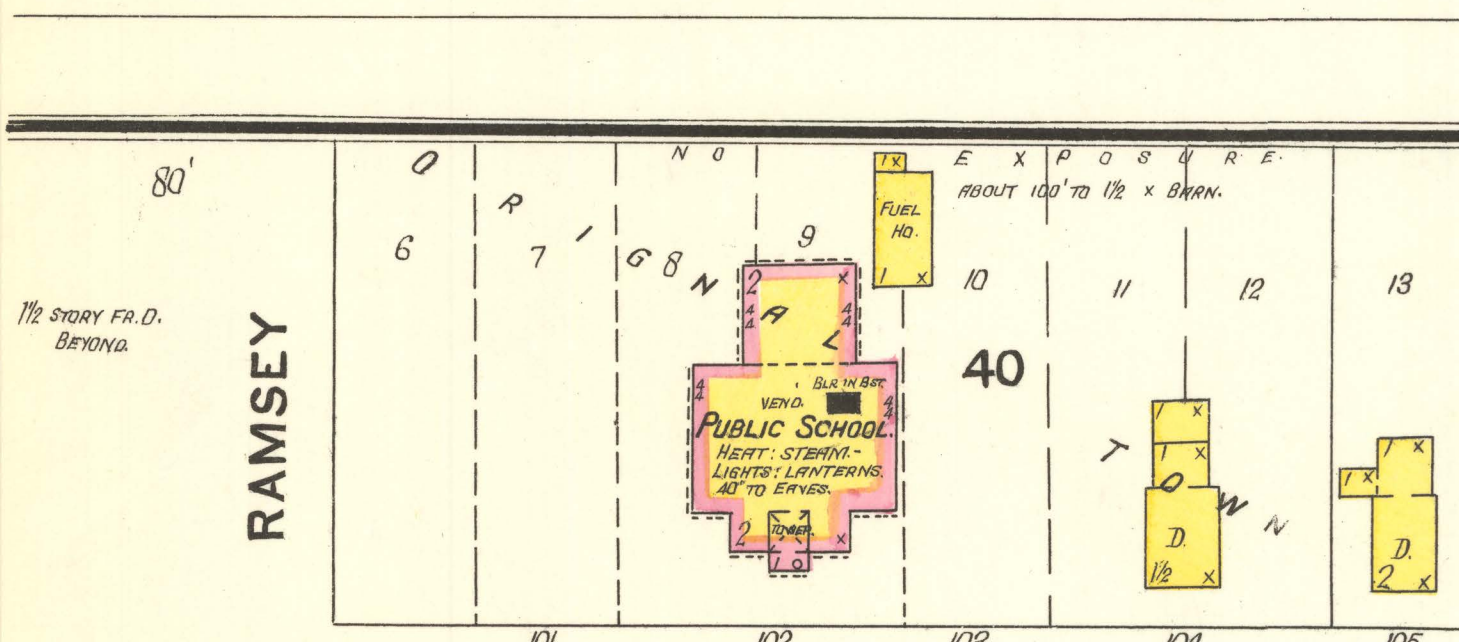
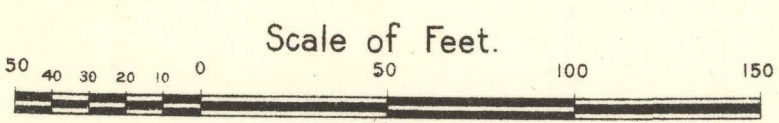


ROLETTE

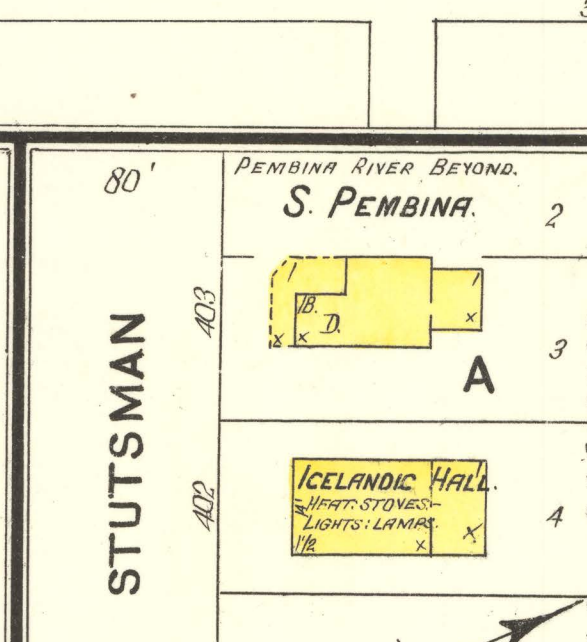
2



CAVILEER



STUTSMAN



KEY
FIRE WALL 6 IN. ASV. ROOF
METAL CORNICE
FIRE WALL 12 IN. ASV. ROOF
WOOD CORNICE
FIRE WALL 16 IN. ASV. ROOF
FRAME PARTITION
OPENING WITH IRON DOOR
"STANDARD"
IRON DOOR
WINDOWS & IRON SHUTTERS
WINDOWS - 1ST STORY
WINDOWS - 2ND & 3RD STORIES
2ND & 4TH
STABLE
BUILDINGS COLORED YELLOW ARE FRAME
BRICK
RED
STONE
IRON
BROWN
ADOBES
GREEN
SPECIALS
⑤ ⑥ INDICATE RELATIVE HEIGHTS.
⑦ FIRE STATION, AS SHOWN ON KEY MAP.
ALTERNATE STREET NUMBERS ARE ACTUAL
CONSECUTIVE STREET NUMBERS ARE ARBITRARY.

