



6-1904

## Pembina, 1904

Sanborn Map Company

[How does access to this work benefit you? Let us know!](#)

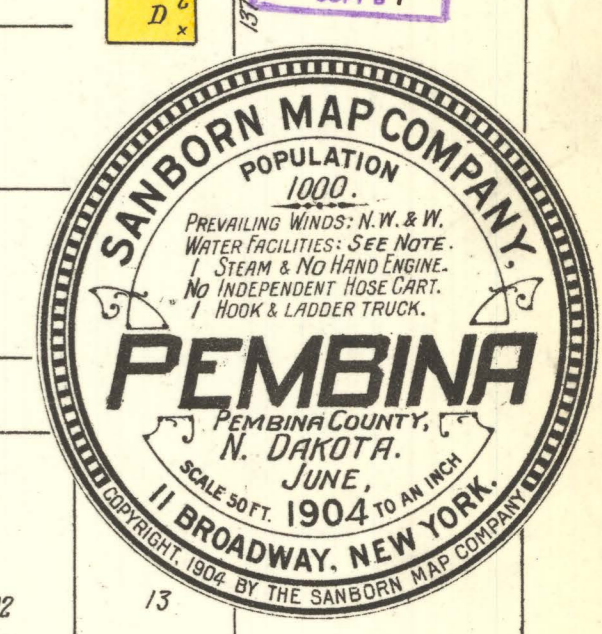
Follow this and additional works at: <https://commons.und.edu/sanborn-maps>

---

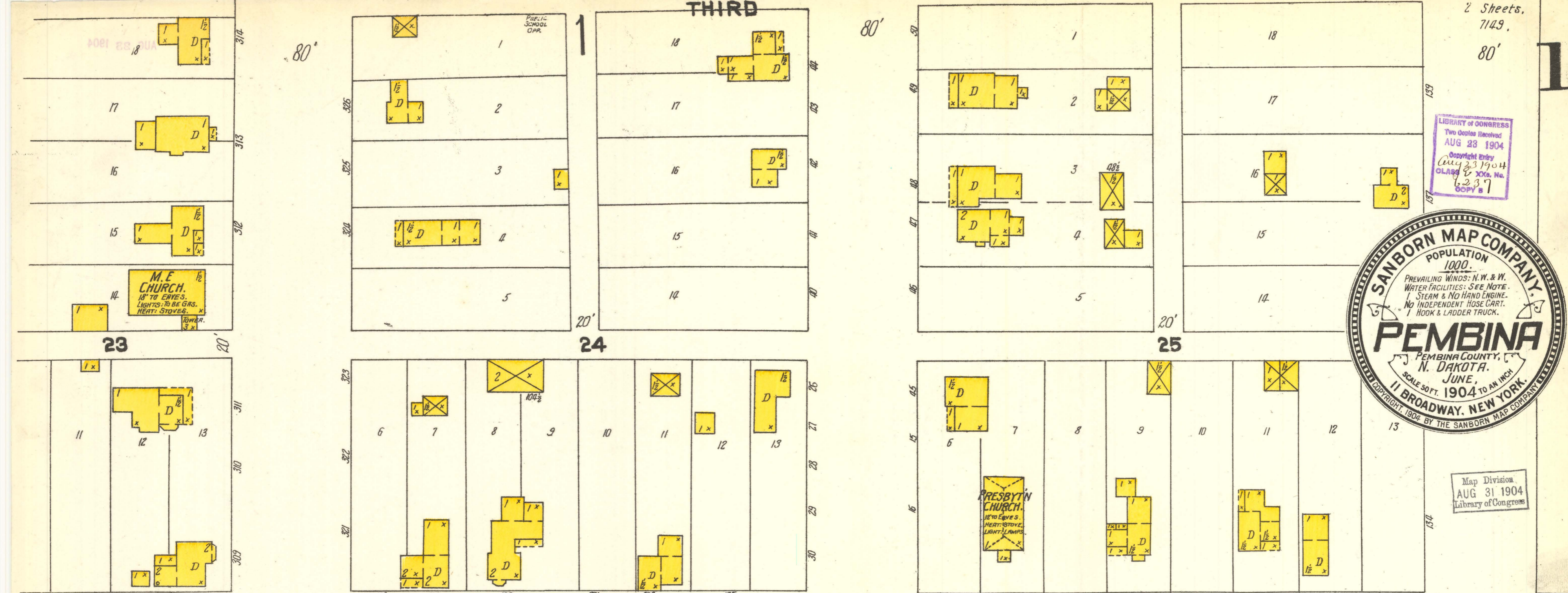
### Recommended Citation

Sanborn Map Company, "Pembina, 1904" (1904). *Sanborn Maps of North Dakota*. 178.  
<https://commons.und.edu/sanborn-maps/178>

This Book is brought to you for free and open access by the Elwyn B. Robinson Department of Special Collections at UND Scholarly Commons. It has been accepted for inclusion in Sanborn Maps of North Dakota by an authorized administrator of UND Scholarly Commons. For more information, please contact [und.common@library.und.edu](mailto:und.common@library.und.edu).

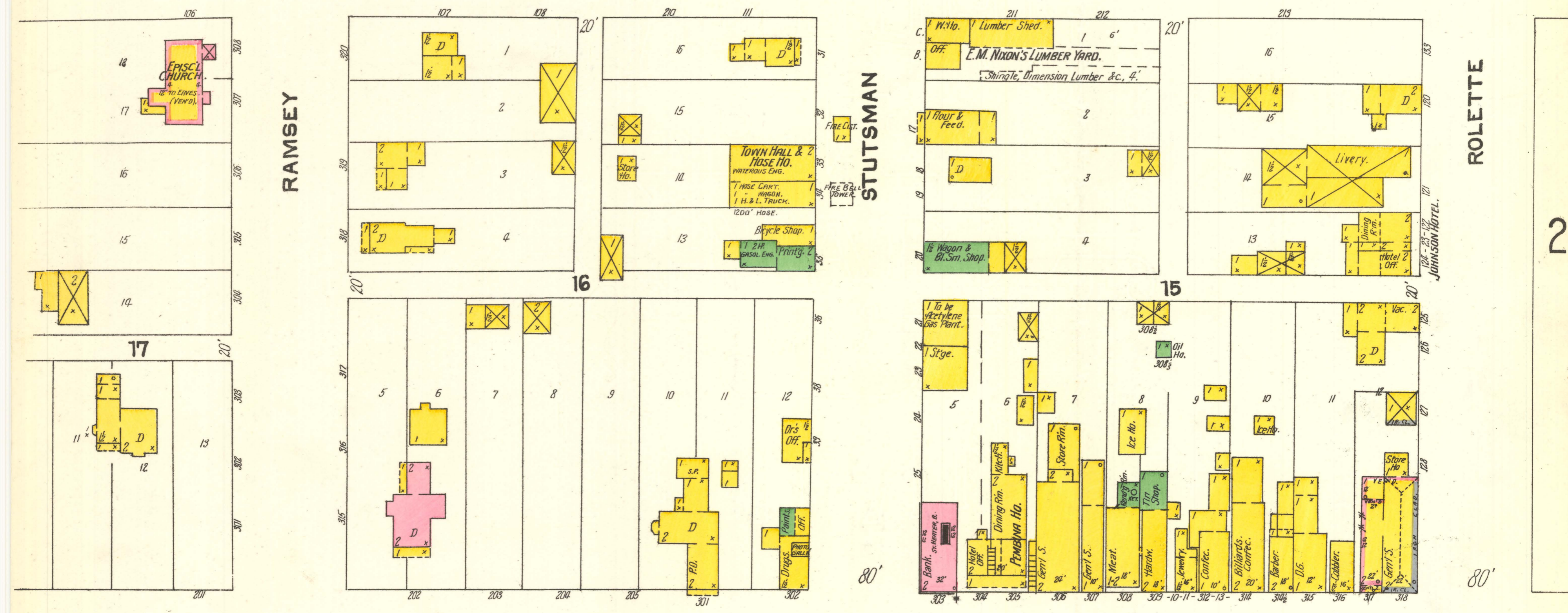


Map Division  
AUG 31 1904  
Library of Congress

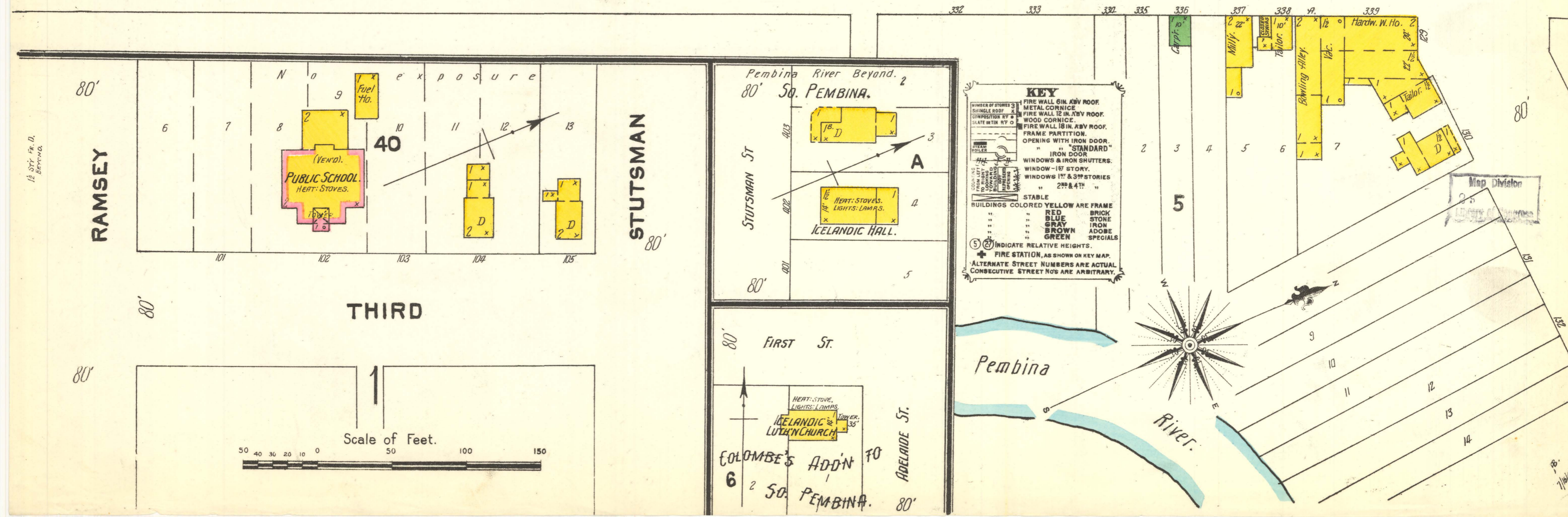


WATER FACILITIES: SUPPLY FROM 2-1500 GAL. LIST'S; PEMBERNA & RED RIVERS, ACCESSIBLE.  
FIRE DEPT.: VOL., 14 MEMBERS, 1 WATEROUS STEAMER, 1 HOSE CART, HOSE WAGON, 1 H.M.L. TRUCK, 1200-22' COTTON HOSE, ALARM BELL ON 30' TOWER.  
STREETS 80' WIDE; NOT PAVED, PUBLIC LIGHTING TO BE ACETYLENE GAS, PLANT & MAINS BEING INSTALLED.

SECOND



CAVILEER



**KEY**  
FIRE WALL 6 IN. ASV ROOF  
METAL CORNICHE  
FIRE WALL 12 IN. ASV ROOF  
WOOD CORNICHE  
FIRE WALL 18 IN. ASV ROOF  
FRAME PARTITION  
OPENING WITH IRON DOOR  
"STANDARD"  
IRON DOOR  
WINDOWS & IRON SHUTTERS  
WINDOW - 19 STORY  
WINDOWS 17 & 18 STORIES  
"222 & 41"  
STABLE  
BUILDINGS COLORED YELLOW ARE FRAME  
RED BRICK  
BLUE STONE  
GRAY IRON  
BROWN ADONE  
GREEN SPECIALS  
⊕ INDICATE RELATIVE HEIGHTS  
⊙ FIRE STATION, AS SHOWN ON KEY MAP.  
ALTERNATE STREET NUMBERS ARE ACTUAL  
CONSECUTIVE STREET NOS ARE ARBITRARY.

Scale of Feet.  
50 40 30 20 10 0 50 100 150