



10-1907

Minot, 1907

Sanborn Map Company

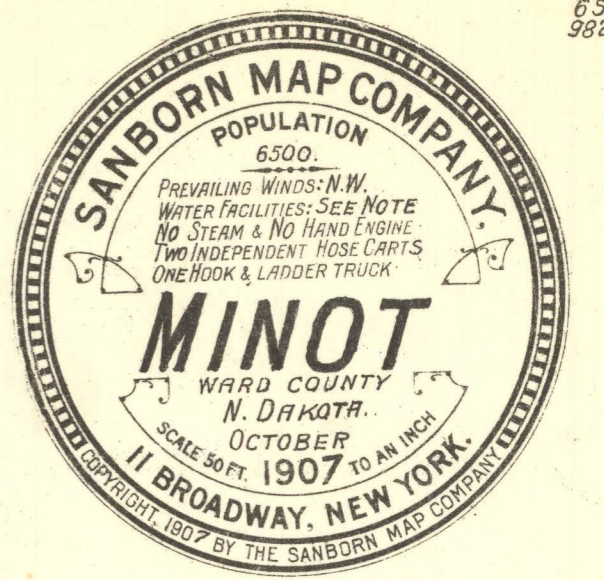
[How does access to this work benefit you? Let us know!](#)

Follow this and additional works at: <https://commons.und.edu/sanborn-maps>

Recommended Citation

Sanborn Map Company, "Minot, 1907" (1907). *Sanborn Maps of North Dakota*. 184.
<https://commons.und.edu/sanborn-maps/184>

This Book is brought to you for free and open access by the Elwyn B. Robinson Department of Special Collections at UND Scholarly Commons. It has been accepted for inclusion in Sanborn Maps of North Dakota by an authorized administrator of UND Scholarly Commons. For more information, please contact und.common@library.und.edu.



WATER FACILITIES. Supply from Mouse River Above Dam -
 1 Deane Duplex F.P. (10x6x10) Capy 300,000 Gallons Per Day, & One
 Wagner Duplex F.P. (10x5x10) - Pumping Through Mains to Reservoir,
 Capy 6,3000 Gals. Located at South End of Main St. 160' Above Business
 Section, Giving Combined Direct & Gravity Pressure -
 Domestic Pressure 60 to 70 lbs. - Fire Pressure 90 lbs. -
 1 1/2 Miles 4" & 6" Mains - 20 Double Hyd's. - Mains Laid 1895 -
 System to Be Reconstructed 500ft. -

FIRE DEPT. 1- Driver & 2 Trained Horses Constantly at Eng. Ho. -
 32 Men Paid for Fires Attended - 9 Men Sleeping at Eng. Ho. -
 2 Horse Wagons - 2 #777 Chemical Engines - 1 H&L Truck -
 3200' 2" Cam Rubber Lined Hose -
 Streets Graveled - Public Lighting - Electric - Grades Heavy -
 Town Lies in Valley Sloping Towards - The North a Difference
 of 90' in Elevation Between Sixth St. on South Side of Town &
 G.N.R.R. Tracks on North.
 (Exact Levels not available, Except in a Few Cases, Which are Given)

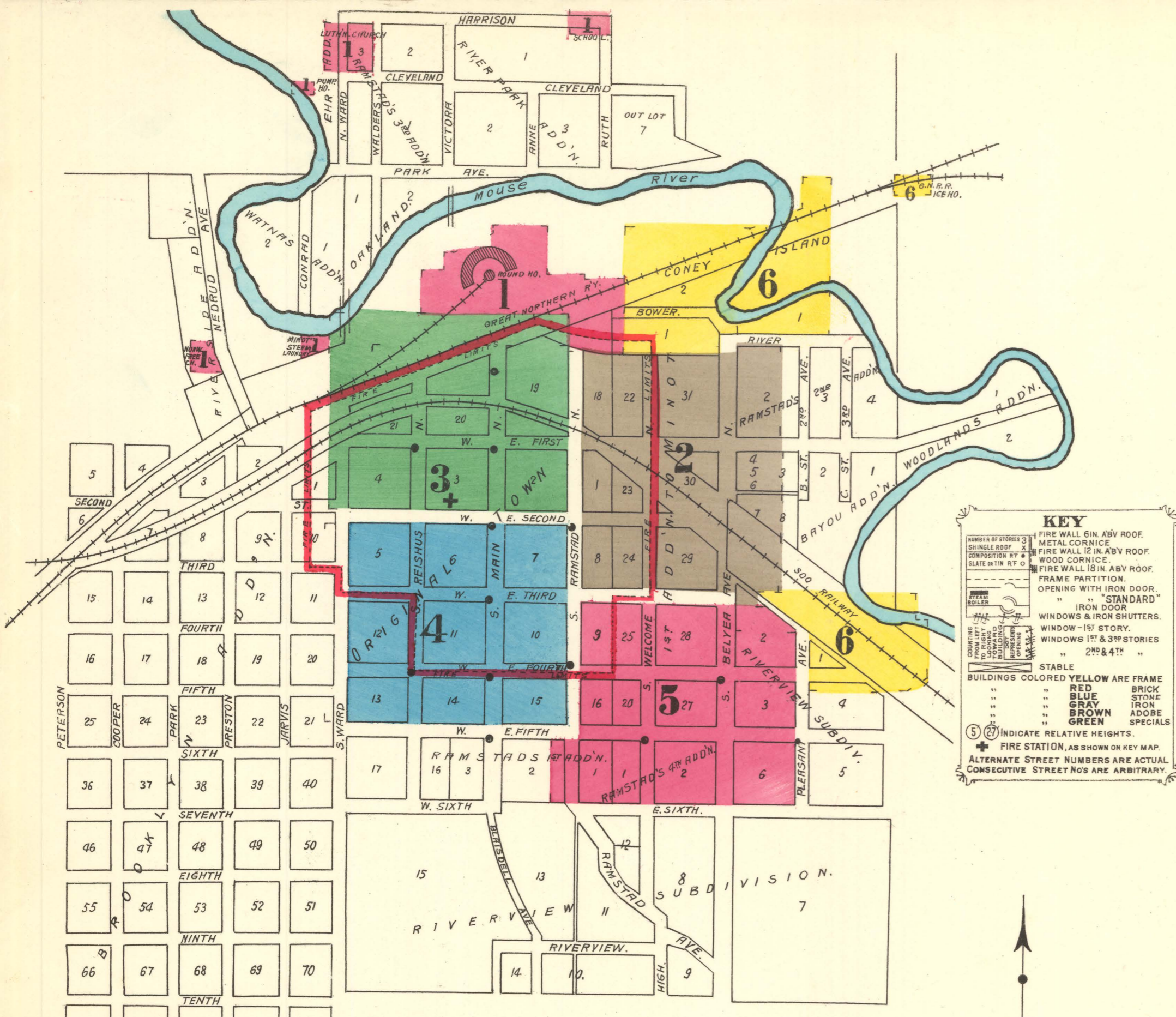
Map Division
 JAN 17 1908

LIBRARY OF CONGRESS
 Two Copies Received
 JAN 6 1908
 GEORGETOWN LIBRARY
 CLASS 12-594

INDEX

STREETS		S		E		N	
STREET	SHEET	STREET	SHEET	STREET	SHEET	STREET	SHEET
Belyea Ave., N.	100-189 2	Elite Steam Laundry	100-161 3	National Hotel	100-161 3	Norwegian Free Church	100-161 3
" "	100-217 2	" "	100-148 3	" "	100-148 3	" "	100-148 3
" "	300-521 5	River	200-419 4	Episcopal Church	401-501 6	" "	401-501 6
Cleveland, W.	1	Ruth	401-501 6	Fire Department	401-501 6	United Church	401-501 6
Fifth, E.	101-123 4	Second, E.	100-192 3	First Baptist Church	101-123 4	Opera House	101-123 4
" "	100-423 5	" "	101-123 4	Great Northern Hotel	200-311 2	Osborn McMillan Elevator Co.	200-311 2
" "	100-222 4	" "	200-311 2	" "	100-214 3	" "	100-214 3
" "	300-311 4	Third, E.	100-123 4	" "	101-223 4	Presbyterian Church	101-223 4
" "	100-183 3	" "	200-421 2	" "	100-214 3	Public Schools	100-214 3
" "	100-213 3	Fourth, E.	100-123 4	" "	100-311 4	" "	100-311 4
" "	100-123 4	" "	200-421 2	Walders	489-500 1	" "	489-500 1
" "	500-509 6	Harrison	100-123 4	Ward, N.	489-500 1	" "	489-500 1
" "	100-223 4	" "	100-149 3	Welcomes, N.	100-129 2	International Harvester Co.	100-129 2
" "	100-223 4	" "	200-419 4	" "	300-525 5	Leland Hotel	300-525 5
Nedrud Ave.	115-127 1	" "	100-149 3	SPECIALS		McClure Coal Co.	100-149 3
Pleasant Ave.	300-524 5	" "	200-419 4	A		McJannett Block	200-419 4
Pleasant Ave.	301-307 6	" "	100-160 3	B		Masonic Temple	100-160 3
" "	101-108 1	" "	109-189 2	Bijou Theatre	4	Mayer Lumber Co.	109-189 2
" "	109-189 2	" "	100-148 3	Blaindell-Bird Block	4	Minot Bottling Works	100-148 3
" "	101-283 2	" "	101-283 2	Bovoy-Shute, Lumber Co.	2	Farmer's Grain Association	101-283 2
" "	200-418 4	" "	301-417 5	Brauer Block	3	" Elevator	301-417 5
" "	301-417 5	" "	500-625 5	Catholic Church	4	" Flour Mill Co., Mill & Ele-	500-625 5
" "	500-625 5	" "	500-625 5	City Hall	3	vator "	500-625 5
" "	500-625 5	" "	500-625 5	County Court House & Jail	5	" Light and Telephone Co.	500-625 5
" "	500-625 5	" "	500-625 5	Hospital	5	" Sash and Door Co.	500-625 5
" "	500-625 5	" "	500-625 5	" "	5	" Steam Laundry	500-625 5
" "	500-625 5	" "	500-625 5	" "	5	White Bro's., Ice Cream Factory	500-625 5
" "	500-625 5	" "	500-625 5	" "	5	Windoor Hotel	500-625 5

NOTE - * Indicates only one side of street shown.



KEY

SHEDS IN ABY ROOF
 METAL CORNICE
 FIRE WALL IN ABY ROOF
 WOOD CORNICE
 FIRE WALL IN ABY ROOF
 FRAME PARTITION
 OPENING WITH IRON DOOR
 " STANDARD
 " IRON DOOR
 WINDOWS & IRON SHUTTERS
 WINDOW - 1ST STORY
 WINDOWS 1ST & 3RD STORIES
 2ND & 4TH "

STABLE
 BUILDINGS COLORED YELLOW ARE FRAME
 BRICK
 RED
 BLUE
 IRON
 GREEN
 @ INDICATE RELATIVE HEIGHTS.

FIRE STATION, AS SHOWN ON KEY MAP.
 ALTERNATE STREET NUMBERS ARE ACTUAL
 CONSECUTIVE STREET NOS ARE ARBITRARY

