



10-1913

Mandan, 1913

Sanborn Map Company

[How does access to this work benefit you? Let us know!](#)

Follow this and additional works at: <https://commons.und.edu/sanborn-maps>

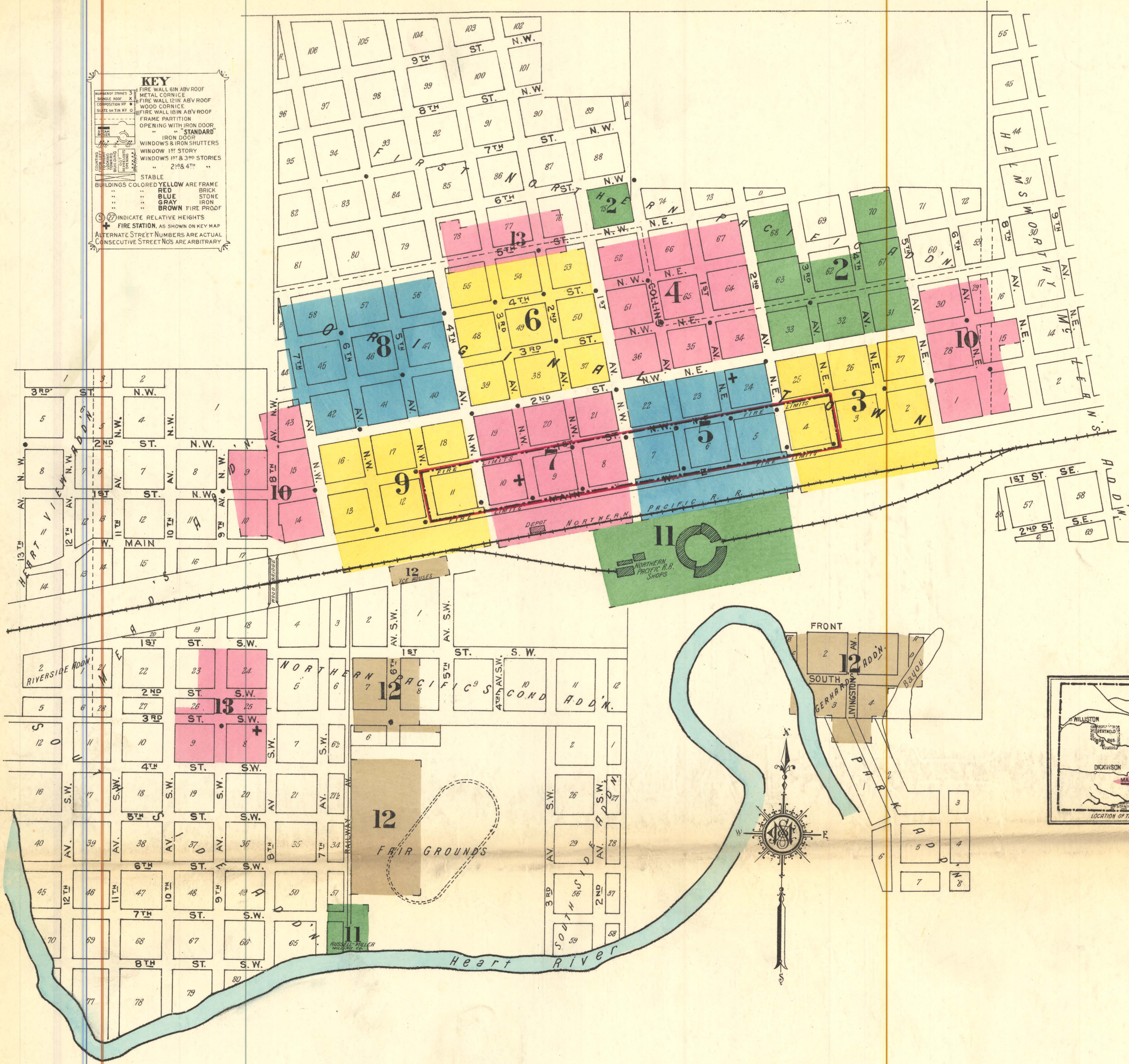
Recommended Citation

Sanborn Map Company, "Mandan, 1913" (1913). *Sanborn Maps of North Dakota*. 175.
<https://commons.und.edu/sanborn-maps/175>

This Book is brought to you for free and open access by the Elwyn B. Robinson Department of Special Collections at UND Scholarly Commons. It has been accepted for inclusion in Sanborn Maps of North Dakota by an authorized administrator of UND Scholarly Commons. For more information, please contact und.common@library.und.edu.

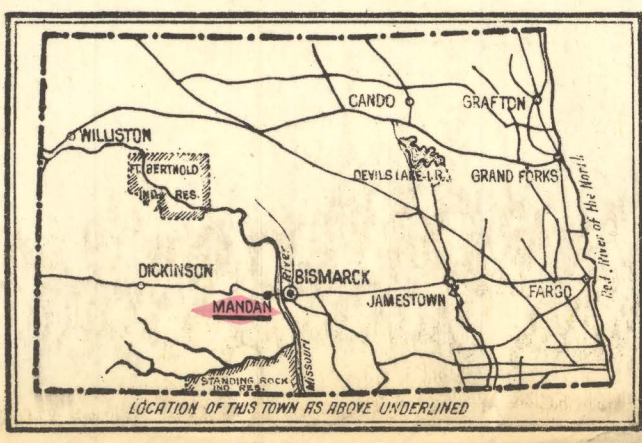


KEY
FIRE WALL IN ABV ROOF
METAL CORNICE
FIRE WALL IN ABV ROOF
WOOD CORNICE
FIRE WALL IN ABV ROOF
FRAME PARTITION
OPENING WITH IRON DOOR
STANDARD
IRON DOOR
WINDOWS & IRON SHUTTERS
WINDOW 1ST STORY
WINDOWS 1ST & 2ND STORIES
2 1/2 & 4"
STABLE
BUILDINGS COLORED YELLOW ARE FRAME
BRICK
RED
BLUE
GRAY
BROWN
FIRE PROOF
INDICATE RELATIVE HEIGHTS
FIRE STATION, AS SHOWN ON KEY MAP
ALTERNATE STREET NUMBERS ARE ACTUAL
CONSECUTIVE STREET NOS ARE ARBITRARY



WATER FACILITIES
Source of supply: Missouri River Pumping Plant, 2 1/2 miles North of Court Ho. Equipment 2,100 H.P. boilers, One 120 H.P. Skinner Engine direct connection to one 75 K.V.A. Fort Wayne Generator, Two Platt centrifugal (2 stage turbine type) pumps, size 48, directly connected to 50 H.P. motors, speed 1,800 revolutions per minute. Suctions 6" discharges 6" pumps can work against head of 245 ft. capacity 500 gals. per minute, pumps discharge into 10" pipe 11,230 ft. long, which conveys water to Reservoirs north of Court Ho. 189 ft. above pumps. Capacity of Reservoirs: Settling Basin: 431,000 gals. Clear Water Well, 104,000 gals. Top of reservoirs are approximately 165 ft. above business district, pressure furnished only by elevation of Reservoirs 70 lbs. Daily consumption 50,000 gals. Principal Mains laid in 1894 & 1911 & 1912. When Pumping Plant was built, seven miles of 4" 6" 10" & 12" Mains, including main to pumping plant, 47 double hydrants

FIRE DEPARTMENT:
Volunteer 80 Men, 4 Companies, 4 Hose Carts with total of 2,500 2 1/2" Hose, 300 2 1/2" Hose in Main station in reserve, one H & L Truck, hose Companies N° 1 & N° 2 Located on 1st Av. N.E. & 2nd St. N.E. N° 3 Located on 8th Av. S.W. & 3rd St. S.W. N° 4 Located on 3rd Av. N.W. between Main & 1st St. N.W. Signal: Whistle at Round House, operated automatically from Telephone Exchange and by code signifying in which district the fire is.



INDEX

STREETS		SPECIALS	
Collins Ave.,	100-211 5	Second St. N. E.,	301-511 *8
" " near County Court House	300-509 4	" " near Custer Public School	600-709 10
Eighth Ave. N. E.,	10 10	" " N. W.,	101-111 *5
" " N. W.,	10 10	" " "	200-410 *6
" " S. W.,	13 13	" " "	201-423 *7
Fifth Ave. N. E.,	100-306 *10	" " "	500-710 *8
" " " N. W.,	101-211 *3	" " E. of Eighth Ave. N. W.	501-721 *9
" " " N. W.,	301-509 *2	" " near Mandan Hospital	100-210 *9
" " St. N. W.,	100-211 9	Seventh Ave. N. W.,	101-311 *10
First Ave. N. E.,	100-211 5	" " "	300-310 *8
" " " N. W.,	300-509 4	" " S. W.,	400-509 *8
" " " N. W.,	100-210 *5	" " St. N. W.,	100-211 9
" " " N. W.,	101-211 *7	" " S. W.,	300-509 *6
" " " N. W.,	300-508 *4	St. N. W.,	100-211 7
" " near County Court House	301-509 *5	South,	100-210 *4
" " St. N. E.,	100-223 9	Tenth Ave. S. W.,	100-213 13
" " " N. W.,	300-511 3	Third Ave. N. E.,	100-213 3
" " " N. W.,	600-709 10	" " " N. W.,	300-409 2
" " " N. W.,	100-123 5	" " " N. W.,	411-507 *2
" " " N. W.,	200-423 7	" " " N. W.,	100-211 7
" " " S. W.,	500-721 9	" " St. N. E.,	100-211 7
" " " S. W.,	300-817 10	" " " N. W.,	300-511 2
" " " S. W.,	100-211 12 & 13	" " " S. W.,	510-697 *4
Fourth Ave. N. E.,	100-211 3	" " St. N. E.,	200-409 8
" " " N. W.,	300-409 2	" " " S. W.,	101-223 *5
" " " N. W.,	410-508 *2	" " " S. W.,	300-510 *2
" " " N. W.,	100-210 *7		
" " " N. W.,	101-211 *9		
" " " S. W.,	300-508 *6		

* Indicates only one side of Street shown.