



11-1904

Mandan, 1904

Sanborn Map Company

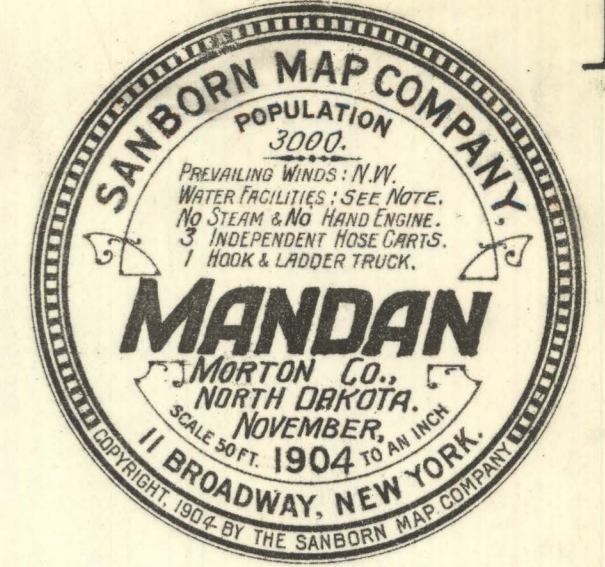
[How does access to this work benefit you? Let us know!](#)

Follow this and additional works at: <https://commons.und.edu/sanborn-maps>

Recommended Citation

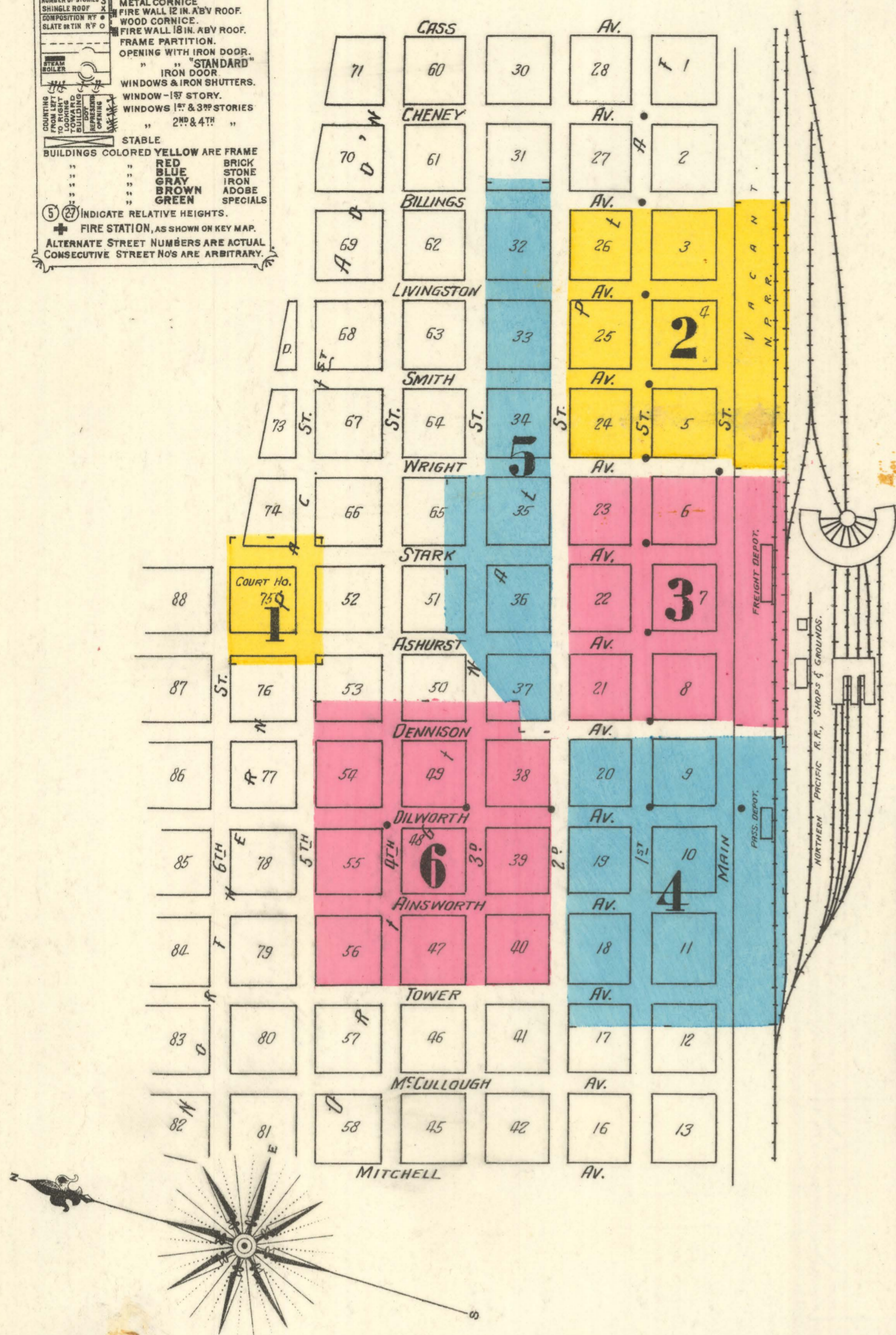
Sanborn Map Company, "Mandan, 1904" (1904). *Sanborn Maps of North Dakota*. 164.
<https://commons.und.edu/sanborn-maps/164>

This Book is brought to you for free and open access by the Elwyn B. Robinson Department of Special Collections at UND Scholarly Commons. It has been accepted for inclusion in Sanborn Maps of North Dakota by an authorized administrator of UND Scholarly Commons. For more information, please contact und.common@library.und.edu.



KEY

- FIRE WALL 8 IN. ASB. ROOF
- METAL CORNICE
- FIRE WALL 12 IN. ASB. ROOF
- WOOD CORNICE
- FIRE WALL 18 IN. ASB. ROOF
- FRAME PARTITION
- OPENING WITH IRON DOOR
- "STANDARD"
- WINDOWS WITH IRON SHUTTERS
- WINDOW - 1ST STORY
- WINDOWS 1ST & 2ND STORIES
- 2ND & 4TH
- STABLE
- BUILDINGS COLORED YELLOW ARE FRAME
- BRICK
- RED
- STONE
- BLUE
- IRON
- GRAY
- BROWN
- ADOBE
- SPECIALS
- GREEN
- INDICATE RELATIVE HEIGHTS
- FIRE STATION, AS SHOWN ON KEY MAP
- ALTERNATE STREET NUMBERS ARE ACTUAL
- CONSECUTIVE STREET NOS ARE ARBITRARY



WATER WORKS: SOURCE OF SUPPLY - HEARTY RIVER. WORTHINGTON DUPLEX STEEP AT R.R. PUMP NO. 200. 200 GALLONS PER HOUR PUMP OWNED BY M.R.R. CO. PIPE SYSTEM & HYDRO OWNED BY THE TOWN. LOCATION AT THE PUMP NO. DOMESTIC PRESSURE FROM R.R. W. TANK 45 LBS. DIRECT FIRE PRESSURE 100 LBS. 1 MILE OF 8" W. MAIN 15" 2" DOUBLE FIRE HYDROS.

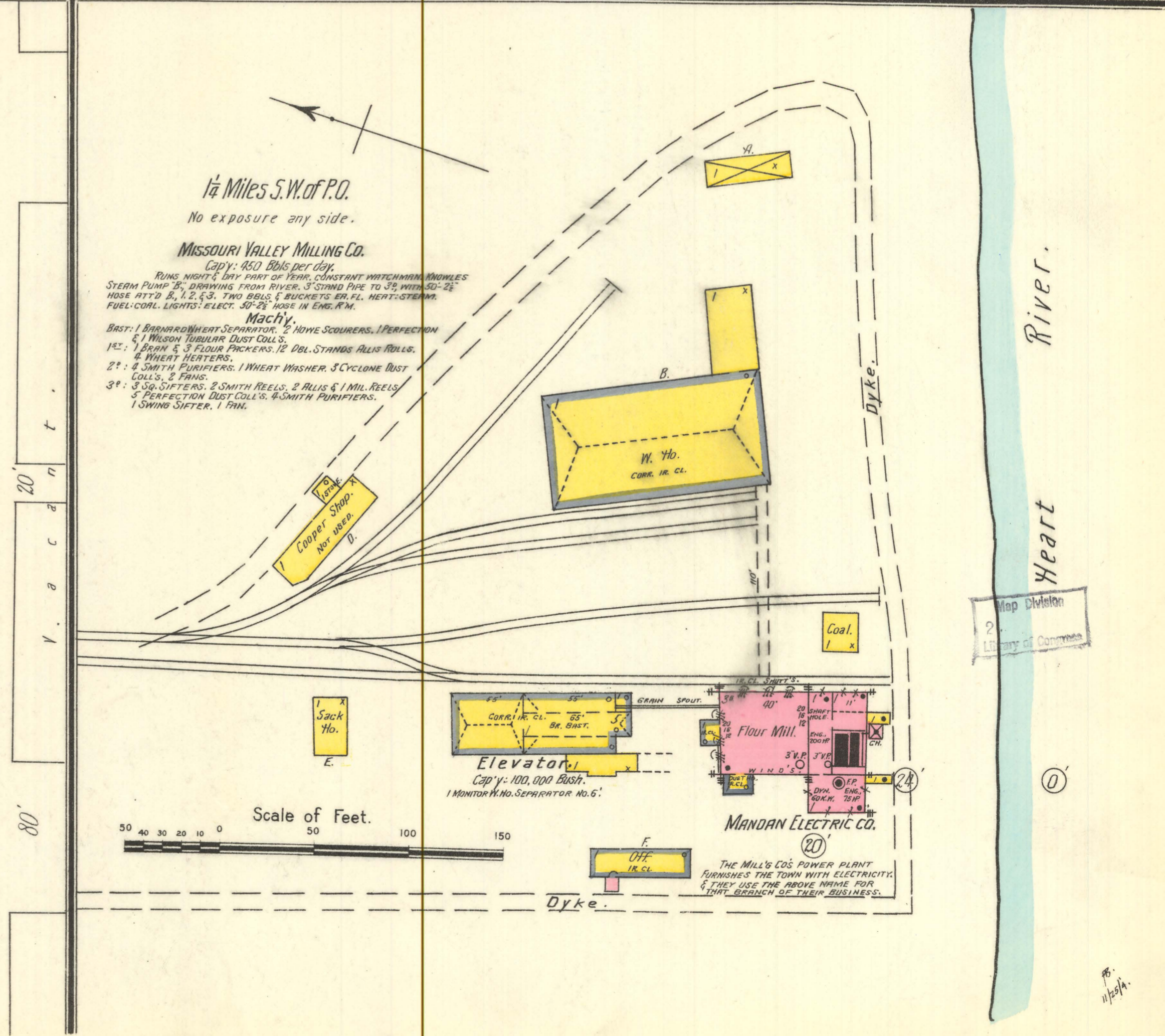
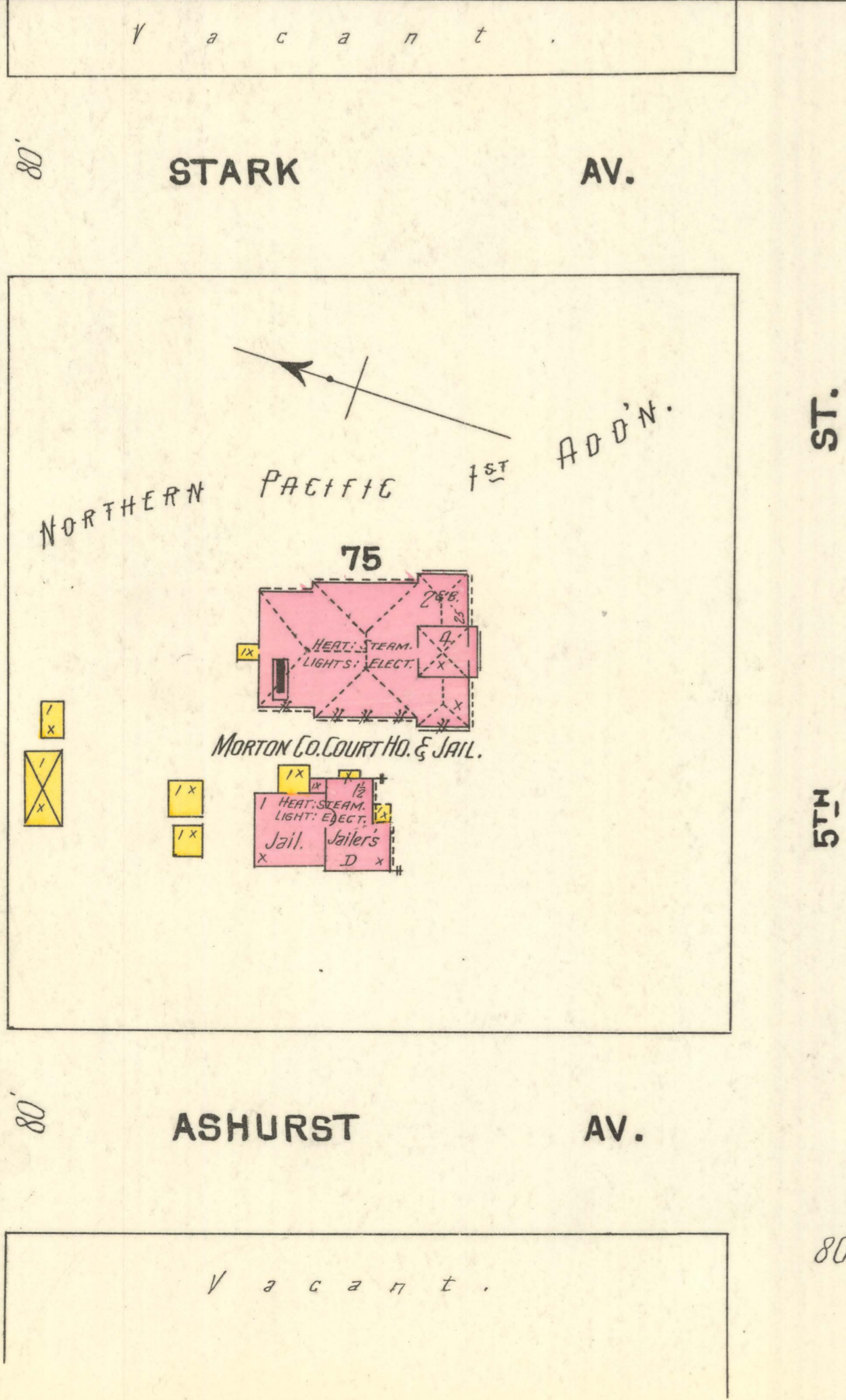
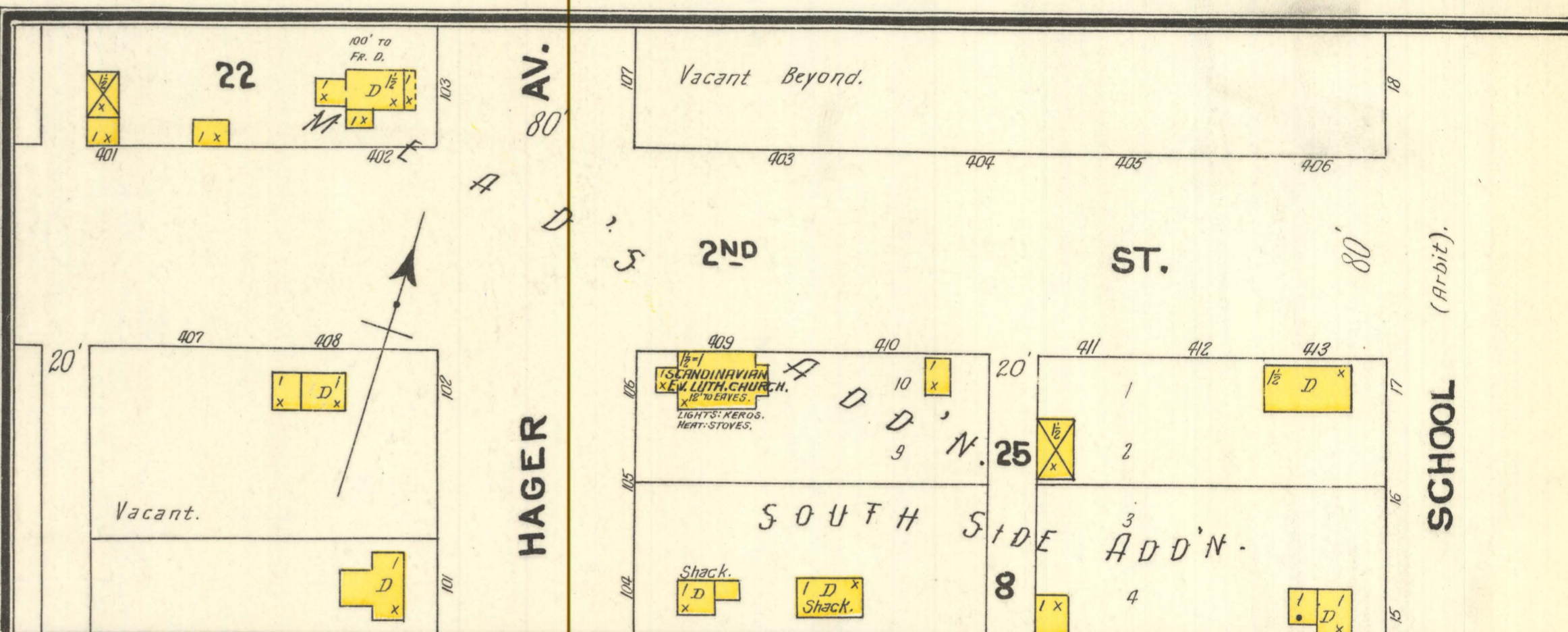
FIRE DEPT.: VOLUNTEER, 56 MEMBERS. 1 H.L. TRUCK, 1 HOSE CART, 20' HOSE, 16 F. ALARM BOXES. SETTING STEAM WHISTLE AT R.R. SHOPS. BLOWING.

STREETS NOT PAVED. TOWN SITE LEVEL ALONG MAIN ST. LIGHTS: COAL-OIL & ELECT. FUEL: WOOD & LIGHTS COAL.

THE LIBRARY OF CONGRESS
Two Copies Received
JAN 19 1905
Copyright Entry
JAN 17 1905
CLASS OF 1904
COPY 2

INDEX.

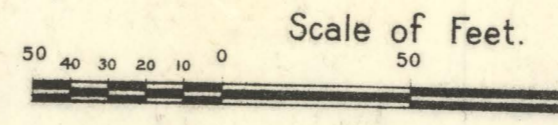
STREETS.		L		W		S		T	
Ainsworth Ave.,	1-12 4	Livingston Ave.,	1-13 2	Tower Ave.,	201-212 4	High School,			
" "	201-234 6	" "	8-15 5	" "	1-7 2	Inter-Ocean Hotel,			
" "	301-312 4	" "	16-21 2	" "	8-12 3	" "			
Ashurst Ave.,	1-13 3	" "	22-24 5	" "	10-15 5	Klondyke Hotel,			
" "	13-25 5	" "	25-30 2	" "	16-21 2	" "			
" "	101-112 3	" "	5th to 6th 1	" "	96-103 5	McKinley Hotel,			
" "	5th to 6th 1	" "		" "	104-108 3	Mandan Elec. Co.,			
Billings Ave.,	4-20 2	" "		" "		Merchants Hotel,			
" "	101-108 5	" "		" "		Methodist Episcopal Church,			
Dennison Ave.,	1-6 3	" "		" "		Minneapolis Brewing Co., Depot,			
" "	7-13 4	" "		" "		Missouri Valley Milling Co.,			
" "	201-206 3	" "		" "					
" "	301-306 4	" "		" "					
" "	501-504 5	" "		" "					
" "	601-627 6	" "		" "					
Dilworth Ave.,	1-12 4	" "		" "					
" "	201-212 4	" "		" "					
" "	275-308 6	" "		" "					
Fifth,	101-108 3	" "		" "					
First,	204-221 3	" "		" "					
" "	222-248 2	" "		" "					
" "	Dennison to Tower 4	" "		" "					
Fourth,	Dennison to Tower 4	" "		" "					
Hager Ave.,	101-107 1	" "		" "					



1/4 Miles S.W. of P.O.
No exposure any side.

MISSOURI VALLEY MILLING CO.
Cap'y: 450 Bbls per day
RINGS NIGHT & DAY PART OF YEAR. CONSTANT WATCHMAN KNOWLEDGE
STEAM PUMP 25, DRAWING FROM RIVER, 3" STAND PIPE TO 35' WITH 30"-22"
HOSE 117' 0", 4", 2", 3". TWO BBL'S & BUCKETS 80 L. HEIGHT: STEAM
FUEL: COAL. LIGHTS: ELECT. 50-25' HOSE IN ENG. RM.

Machinery:
BEST: 1 BRANNDORF MEAT SEPARATOR, 2 HOME SCOURERS, 1 PERFECTION
4 1/2 WILSON TUBULAR DUST COLLS, 12 DOL. STANDS ALLIS ROLLS,
12 BURN & 3 FLOUR PICKERS, 12 DOL. STANDS ALLIS ROLLS,
& WHEAT HEATERS,
2 1/2 3/4 SMITH CYCLONES, 1 WHEAT WASHER, 3 CYCLONE DUST
COLLS, 2 FANS,
3 1/2 3/4 SIFTERS, 2 SMITH REELS, 3 ALLIS & 1 MIL REELS,
5 PERFECTION DUST COLLS, 1 SMITH PURIFIER,
1 SWING SIFTER, 1 FAN.



THE MILL'S CO'S POWER PLANT
SERVES THE TOWN WITH ELECTRICITY
& THEY USE THE ABOVE NAME FOR
THEY BRANCH OF THEIR BUSINESS.