



9-1910

## Hillsboro, 1910

Sanborn Map Company

[How does access to this work benefit you? Let us know!](#)

Follow this and additional works at: <https://commons.und.edu/sanborn-maps>

---

### Recommended Citation

Sanborn Map Company, "Hillsboro, 1910" (1910). *Sanborn Maps of North Dakota*. 154.  
<https://commons.und.edu/sanborn-maps/154>

This Book is brought to you for free and open access by the Elwyn B. Robinson Department of Special Collections at UND Scholarly Commons. It has been accepted for inclusion in Sanborn Maps of North Dakota by an authorized administrator of UND Scholarly Commons. For more information, please contact [und.common@library.und.edu](mailto:und.common@library.und.edu).



**SANBORN MAP COMPANY.**  
POPULATION 1250  
PREVAILING WINDS N.W.  
WATER FACILITIES: SEE NOTE  
ONE STEAM & NO HAND ENGINE  
TWO HAND HOSE CARTS  
ONE HOOD & LADDER TRUCK  
**HILLSBORO**  
TRAILL COUNTY  
NORTH DAKOTA  
SEPT. 1908  
MAY 1910  
11 BROADWAY, NEW YORK

**WATER FACILITIES:**  
Stand Pipe System-1-85,000 Gal. Water Tank, elevated 100' on Iron Trestle, supplied by Double Stroke Curtis' Pump 1 1/2 Miles W. of City & Operated by Gasol. Eng. 2 1/2 Miles of 4" 6" & 8" Mains Laid Since 1900. -21 Double Muds: fire pressure 50 lbs. per sq. in. -1-2000 gal. & 1-1000 gal. cisterns at Fire Eng. Ho. -1 Flowing Well & 600 gal. cistern at Sixth & Main Streets.

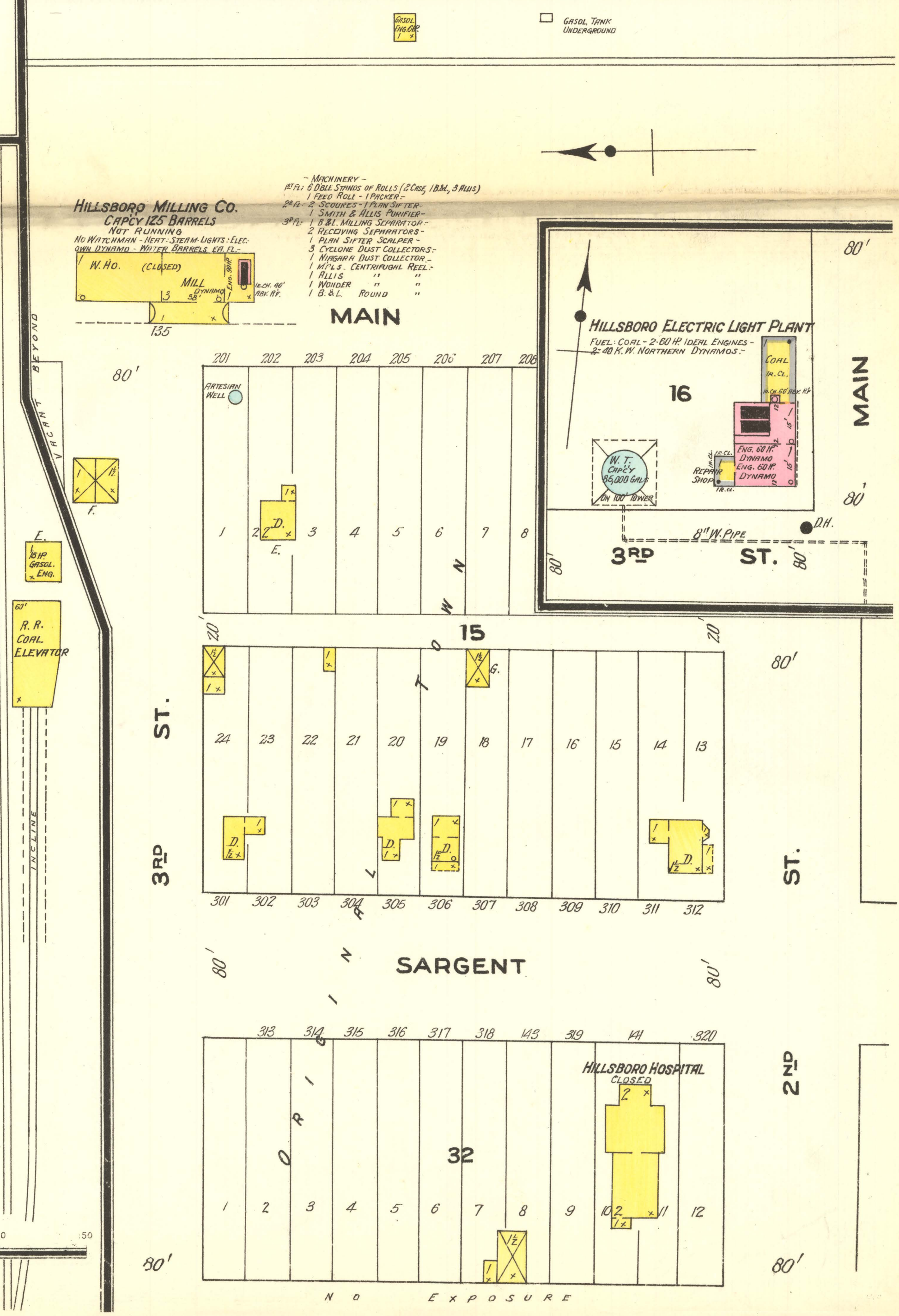
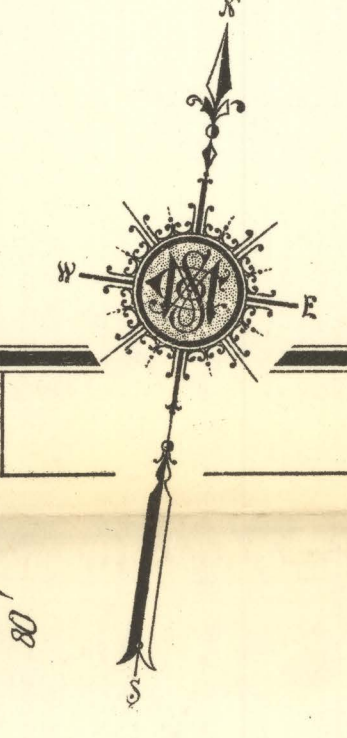
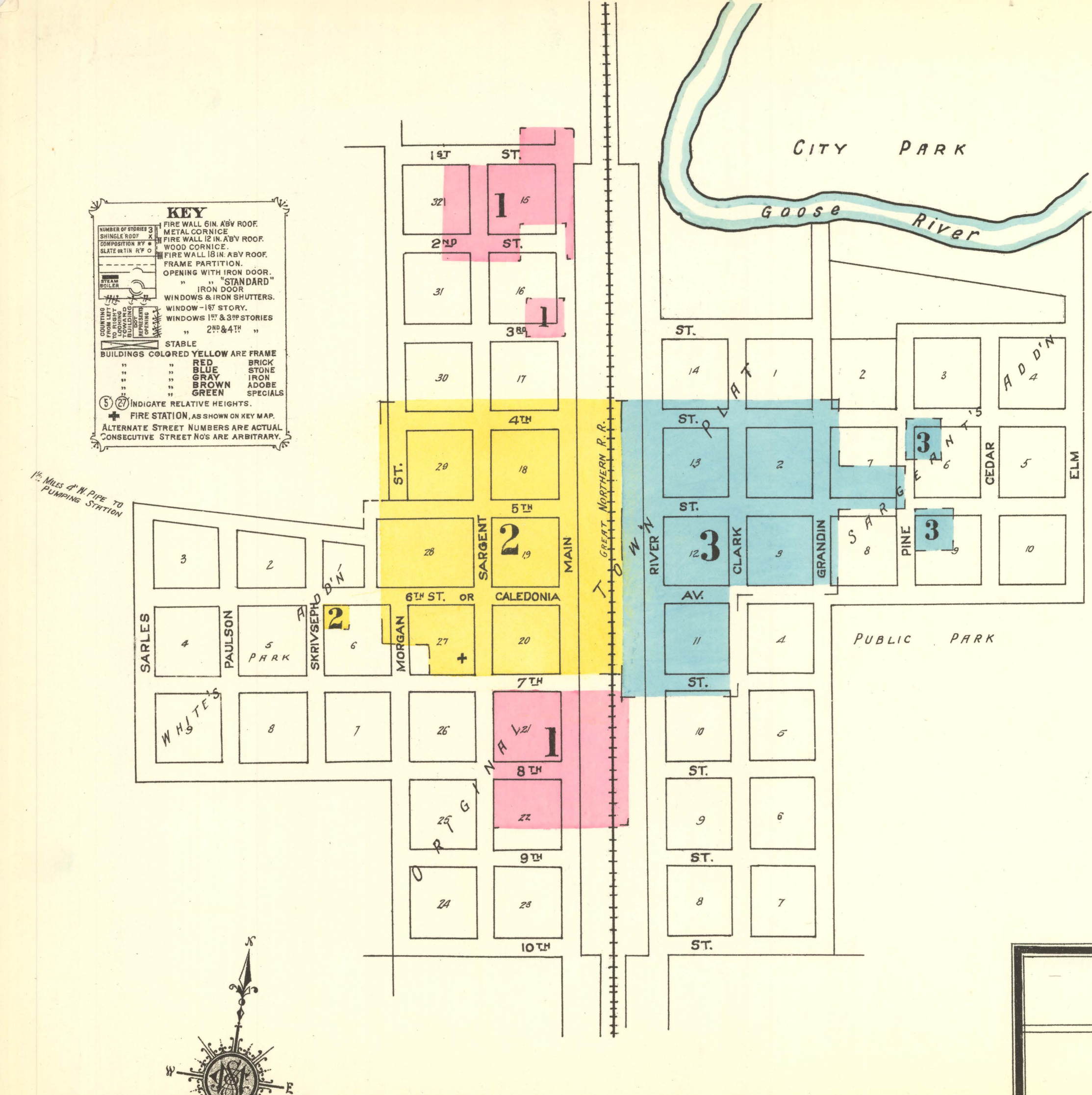
**FIRE DEPT.:**  
1 Volunteer Co. of 40 Members. -1 Waterless Fire Eng. capcy 350 Gals. per min. with maximum pressure of 140 lbs. -1 60 Gal. Chemical Eng. -1 H. & L. Truck - 2 Hand Hose Carts - 1000' 3/4" Cotton Lined Hose (New) 1200' 2" Hose (Old) - Fire Alarm: Bell at City Hall & Whistle at Electric Light Plant. - Streets Not Paved - Public Lighting: Electric.

**KEY**

[Symbol]	FIRE WALL ON ANY ROOF
[Symbol]	METAL CORNICE
[Symbol]	FIRE WALL IN ANY ROOF
[Symbol]	WOOD CORNICE
[Symbol]	FIRE WALL IN ANY ROOF, FRAME PARTITION, OPENING WITH IRON DOOR, "STANDARD"
[Symbol]	IRON DOOR
[Symbol]	WINDOWS & IRON SHUTTERS
[Symbol]	WINDOW - 1ST STORY
[Symbol]	WINDOWS 2ND & 3RD STOREYS
[Symbol]	2ND & 4TH
[Symbol]	STABLE
[Symbol]	BUILDINGS COLORED YELLOW ARE FRAME
[Symbol]	RED BRICK
[Symbol]	BLUE STONE
[Symbol]	GRAY IRON
[Symbol]	BROWN ADOBE
[Symbol]	GREEN SPECIALS
[Symbol]	INDICATE RELATIVE HEIGHTS.
[Symbol]	FIRE STATION, AS SHOWN ON KEY MAP.
[Symbol]	ALTERNATE STREET NUMBERS ARE ACTUAL CONSECUTIVE STREET NOS ARE ARBITRARY.

### INDEX.

SPECIALS.		SHEET	BLK.
A	Hotel Martin, " Weston,	2	3
B	Minneapolis and Northern Elevator Co.,	2	
C	North Western Elevator Co.,	2	
D	Norwegian Lutheran Church,	2	
E	Opera Hall,	1	
F	Post Office, Presbyterian Church,	2	3
G	Public School,	3	
H	Fire Department,	2	
I	First Congregational Church,	3	
J	Roman Catholic Church,	3	
K	St. Anthony and Dakota Elevator Co.,	1	
L	Scandinavian Meth. Episc'l Church,	2	
M	Town Hall,	2	
N	Valley Lumber Co., Lumber, Wood and Coal Yard,	3	



**HILLSBORO MILLING CO.**  
CAPCY 125 BARRELS  
NOT RUNNING  
NO WATER WHEEL - HOT STEAM LIGHTS - ELEC.  
OWN DYNAMO - WINTER BARRELS ET. C.

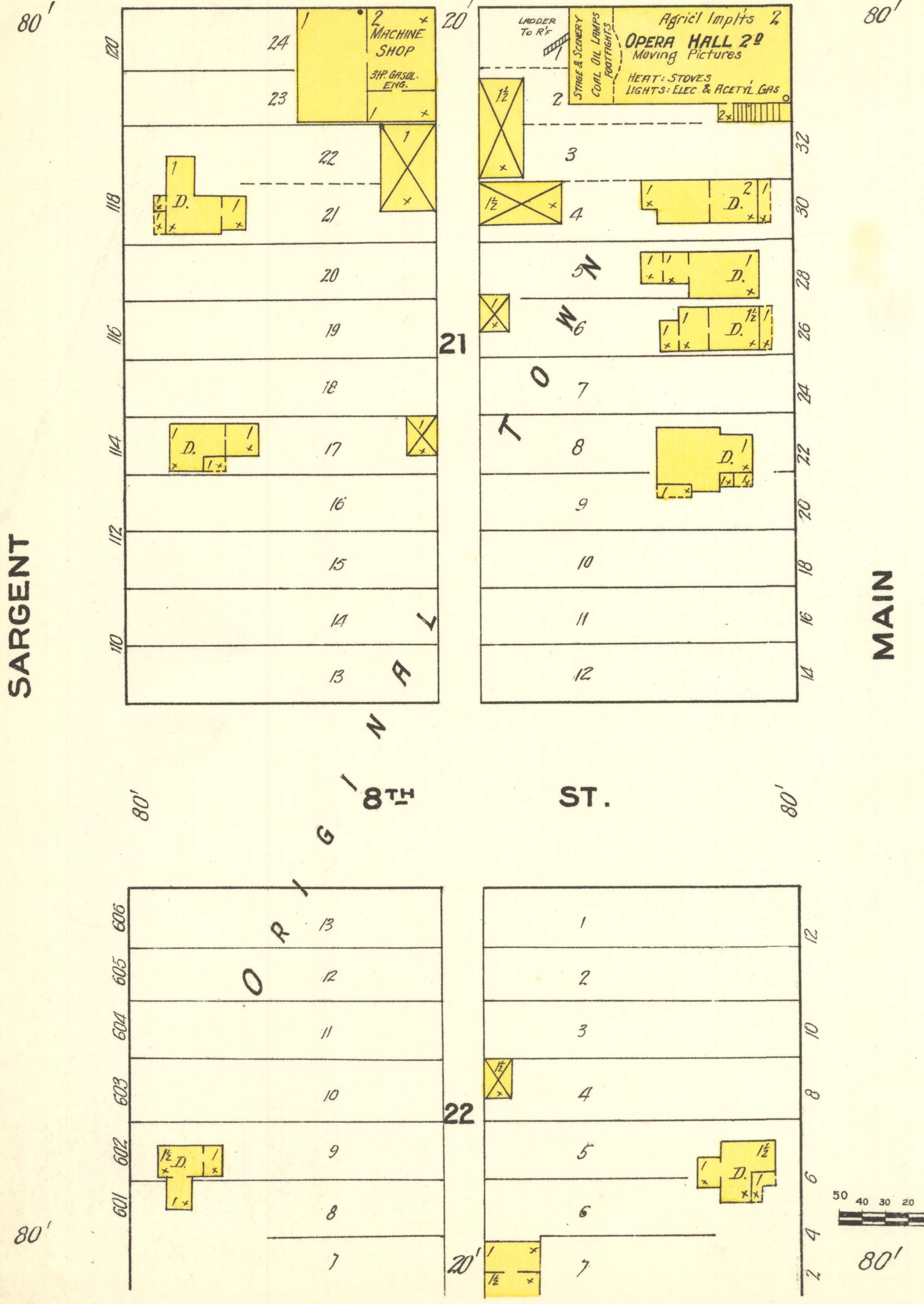
M. H. O. (CLOSED)

MILL CAPCY 500 BBL.

WATER WELL

**HILLSBORO ELECTRIC LIGHT PLANT**  
FUEL COAL - 2-60 HP IDEAL ENGINES  
2-40 H.P. NORTHERN DYNAMOS

COAL  
M. O. C.  
FUEL OIL  
REPAIR SHOP  
TRAKE



**ST. ANTHONY & DAKOTA ELEVATOR CO.**  
CAPCY 20,000 BU. - 100  
POWER - GASOLINE

GRAIN W. HO.  
ELEVATOR  
100 HP GASOL. ENG.  
STOCK PEN

R. R. COAL ELEVATOR

Scale of Feet.

NO EXPOSURE