



11-1891

Grafton, 1891

Sanborn Map Company

[How does access to this work benefit you? Let us know!](#)

Follow this and additional works at: <https://commons.und.edu/sanborn-maps>

Recommended Citation

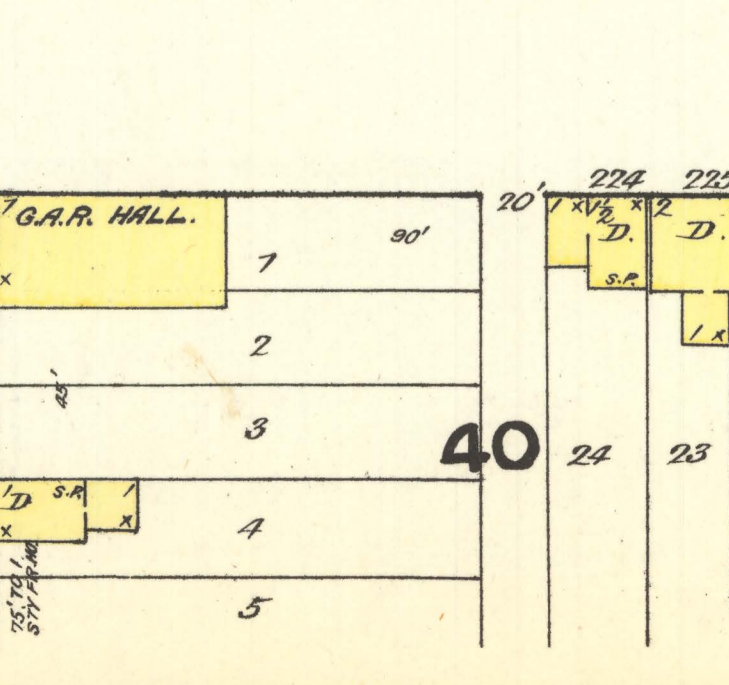
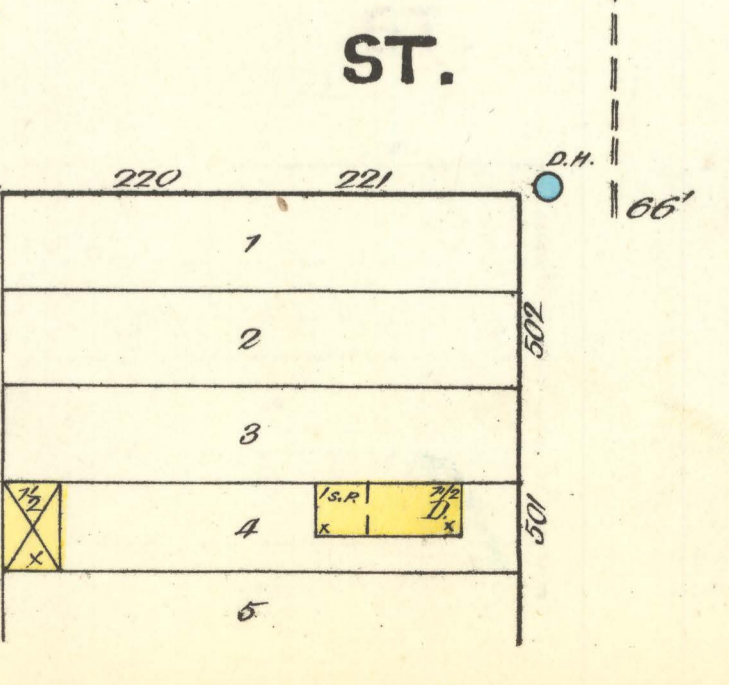
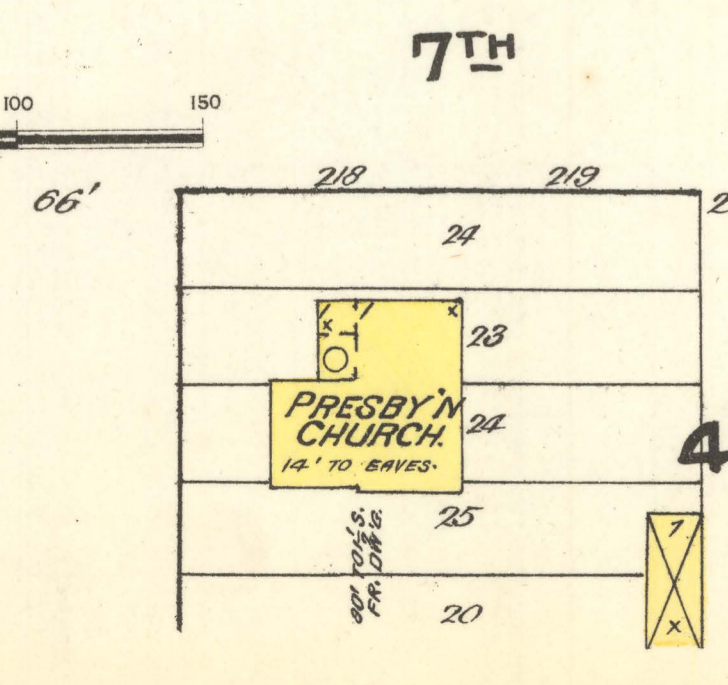
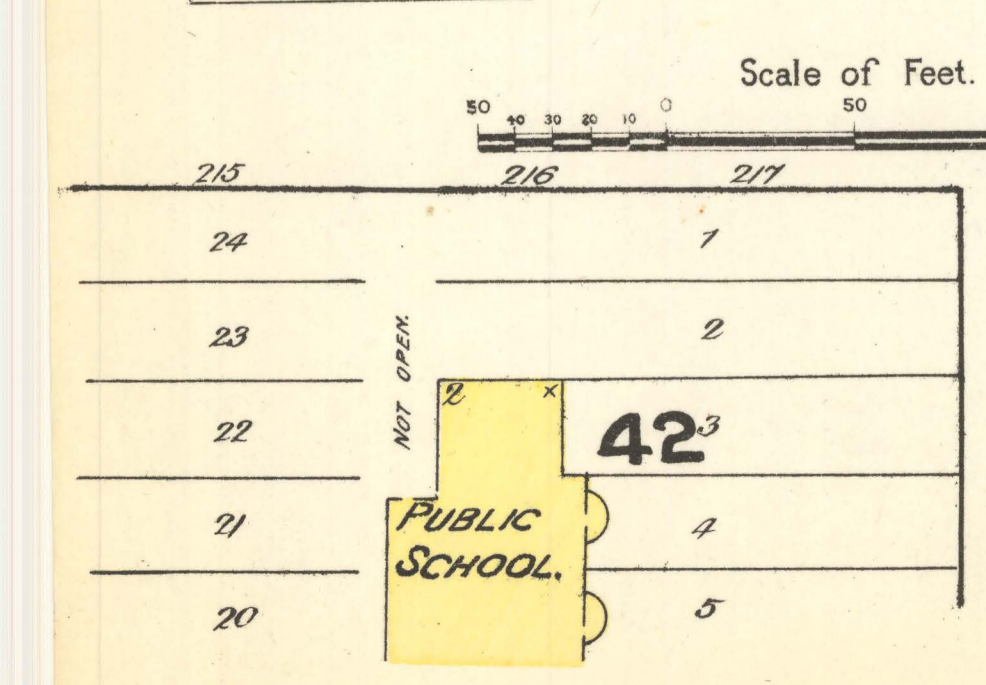
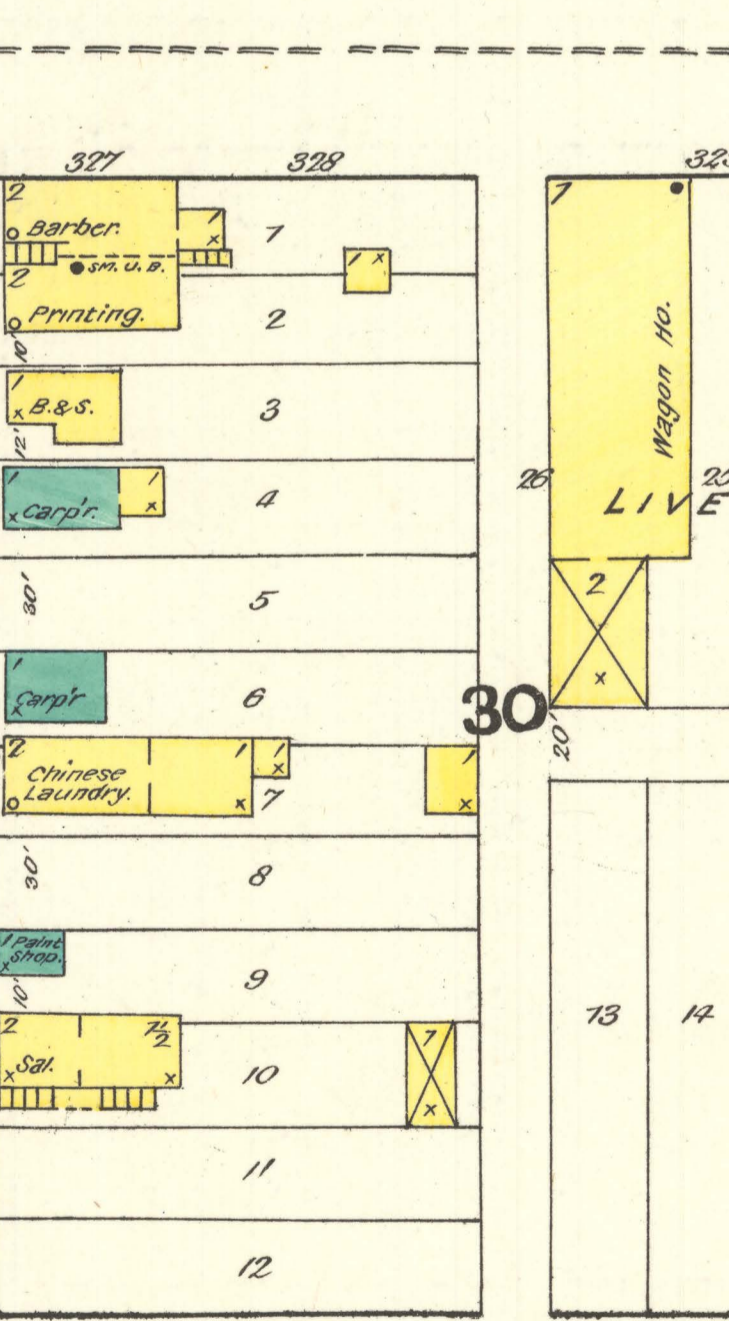
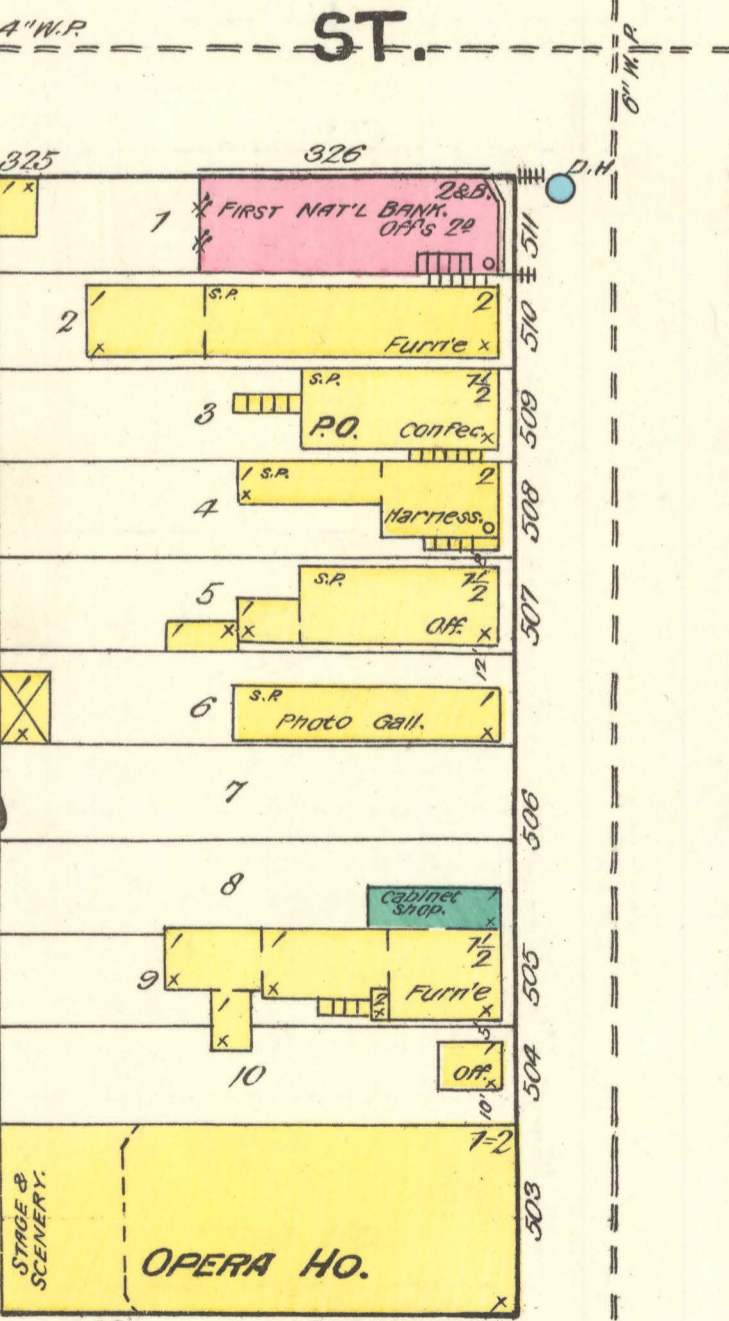
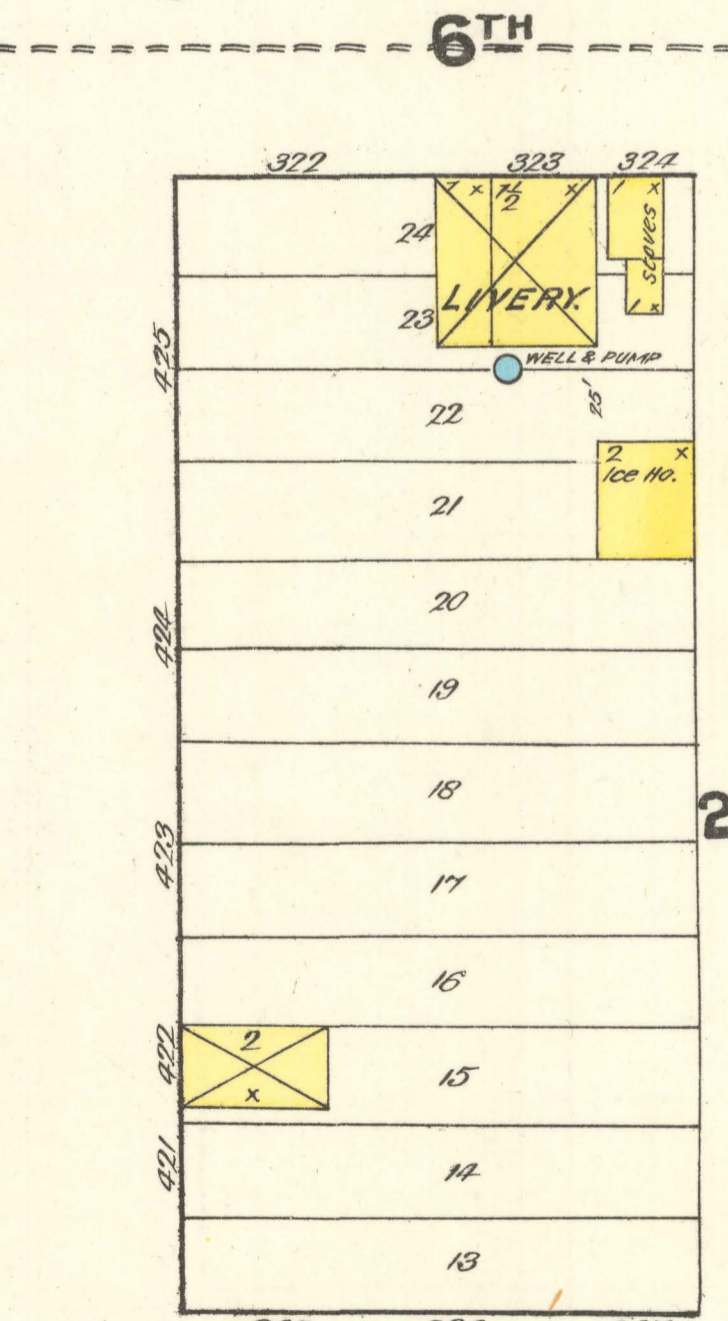
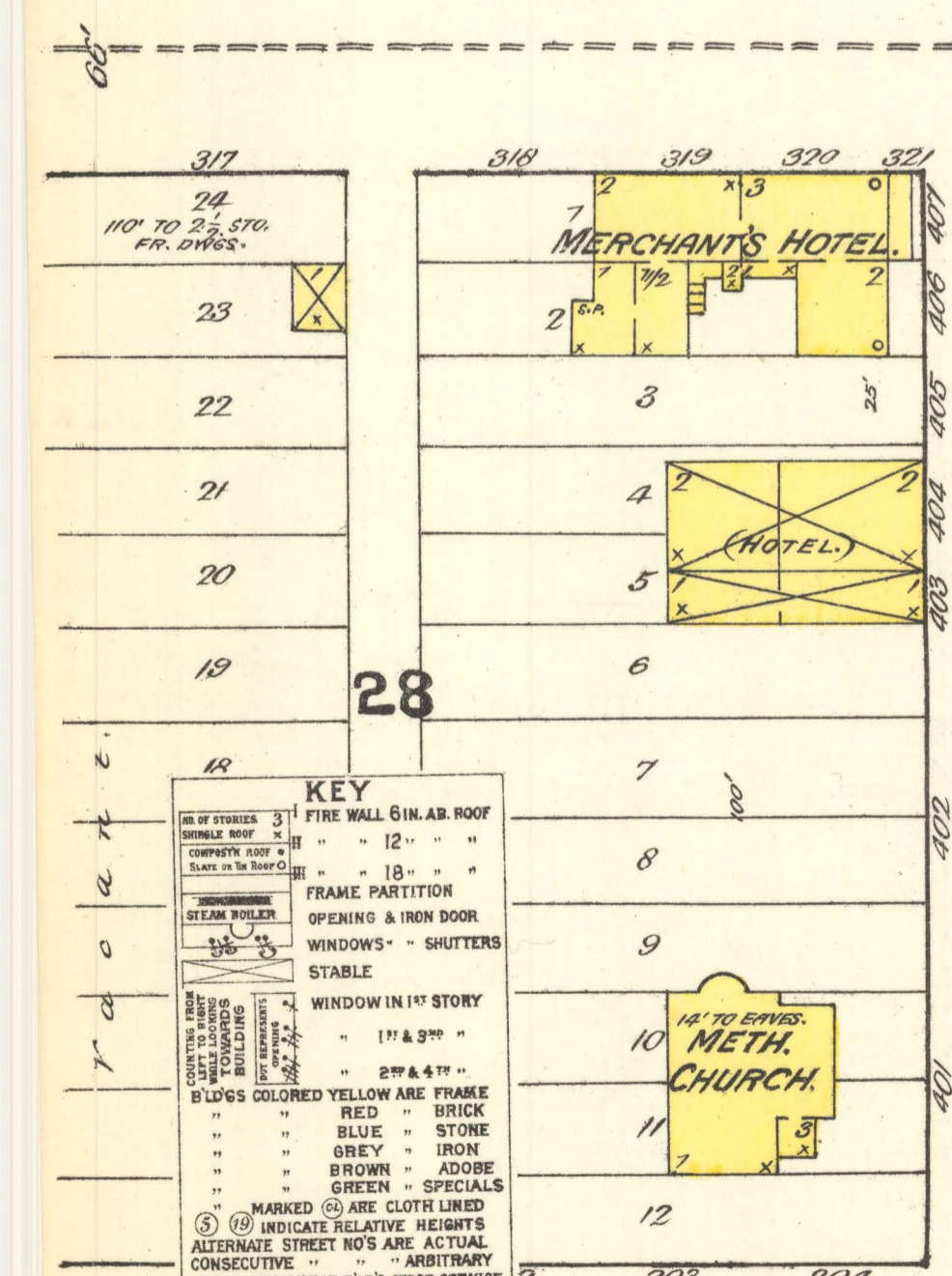
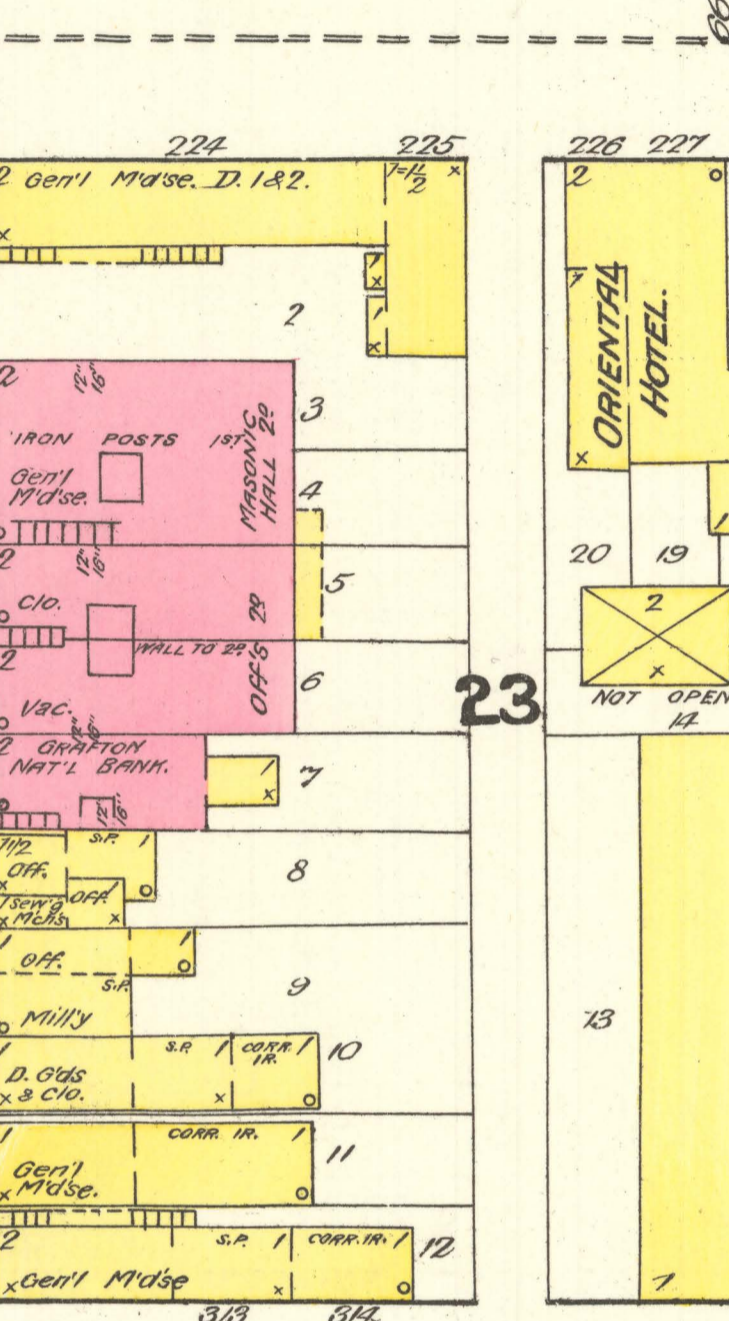
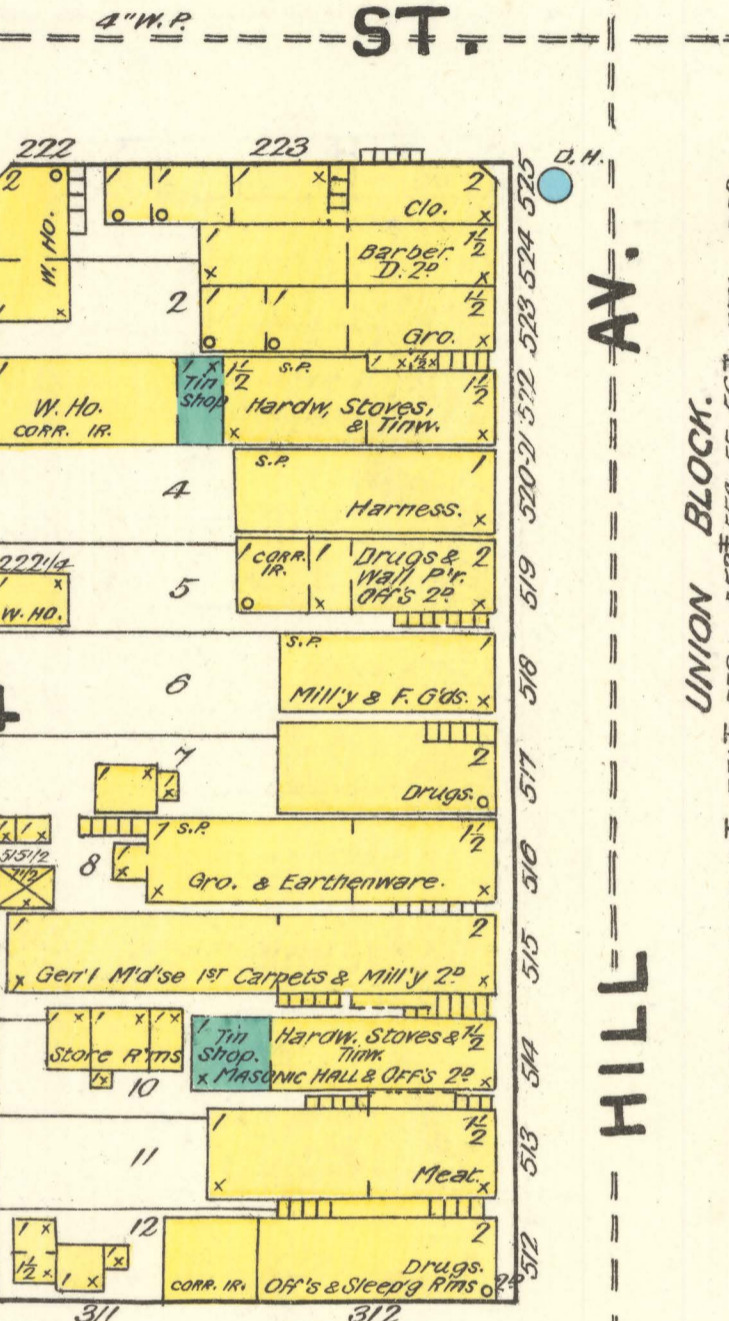
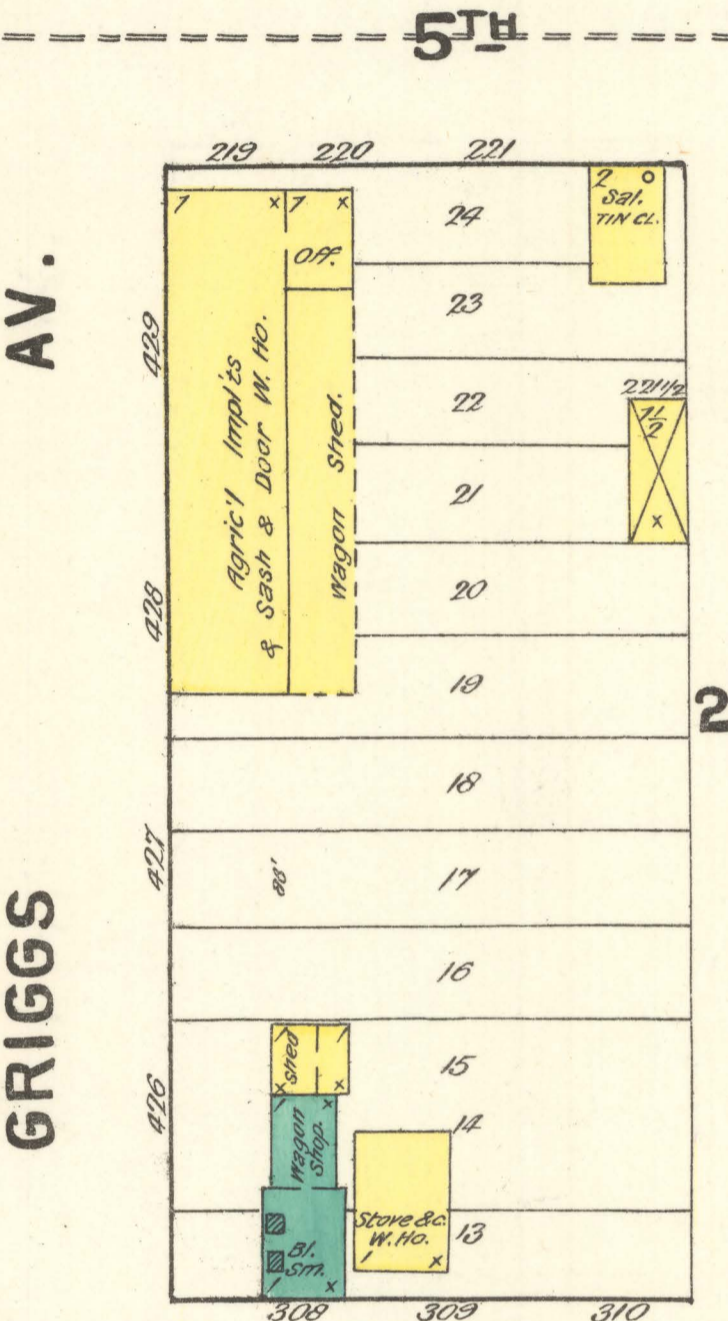
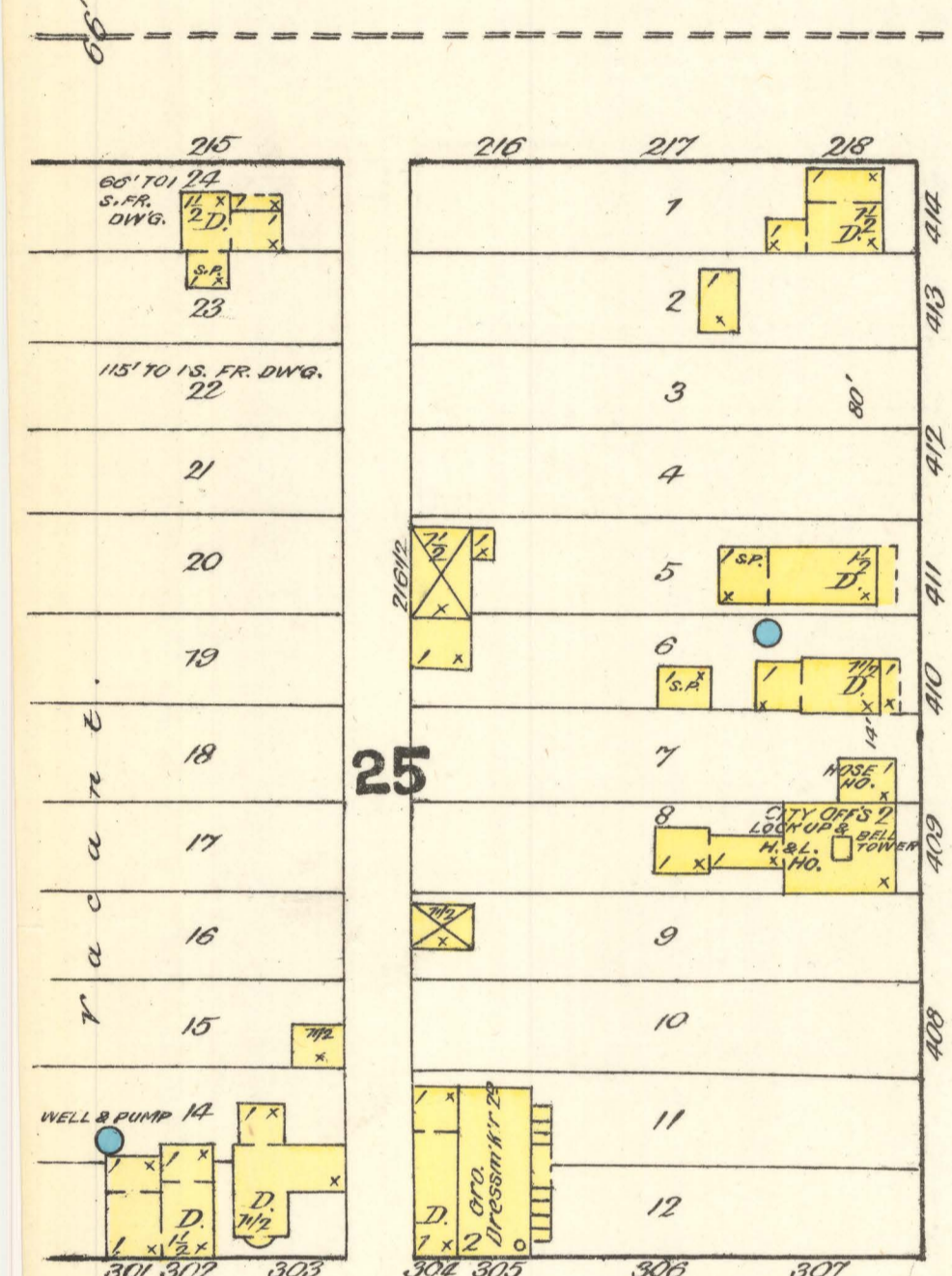
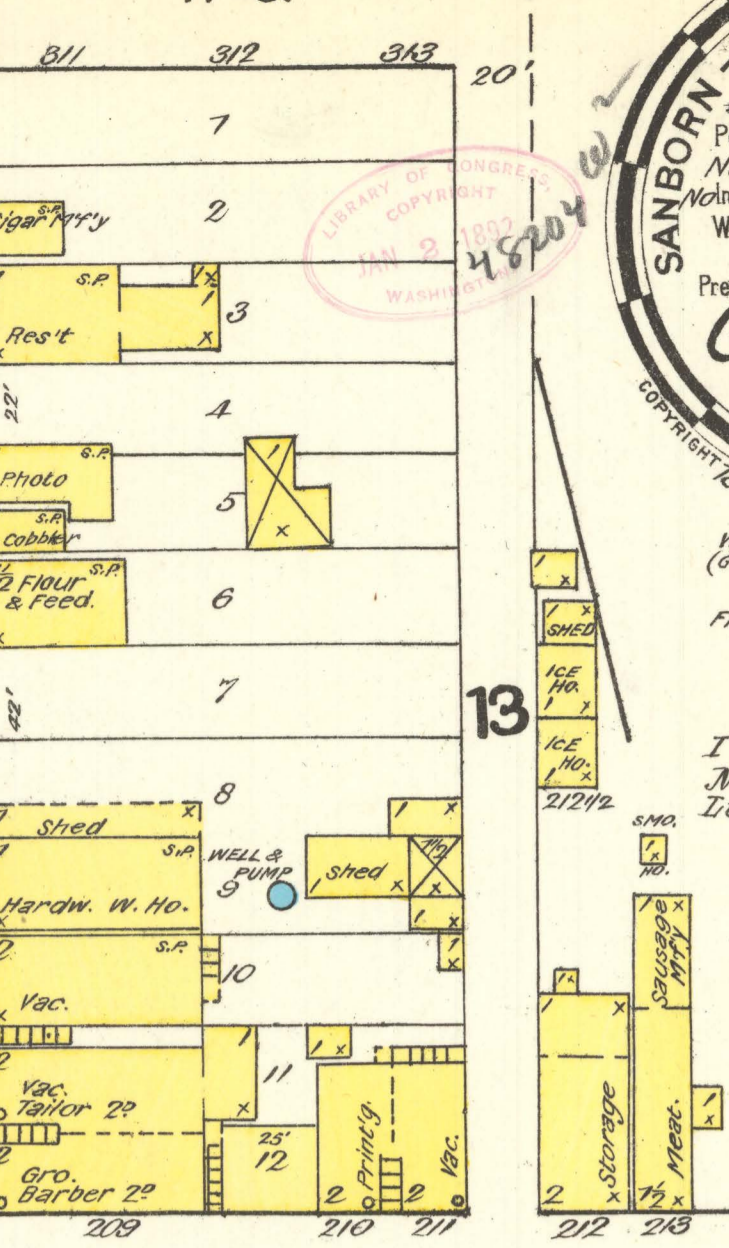
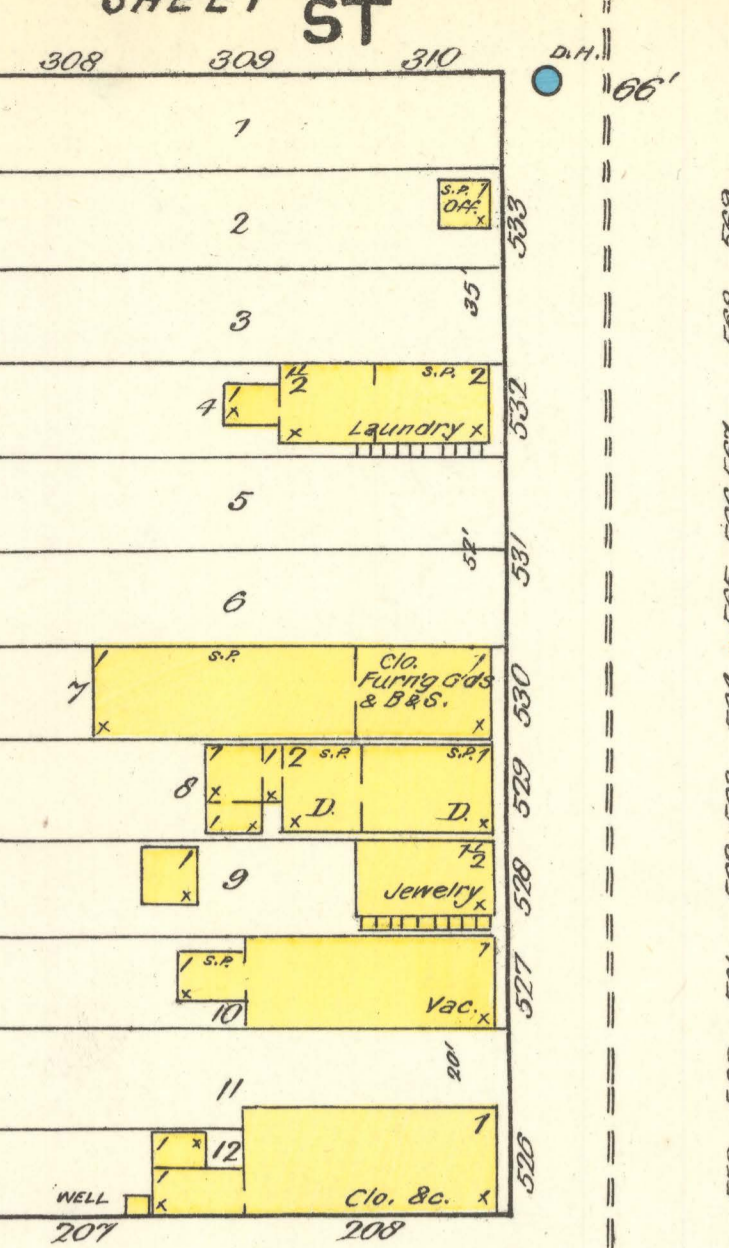
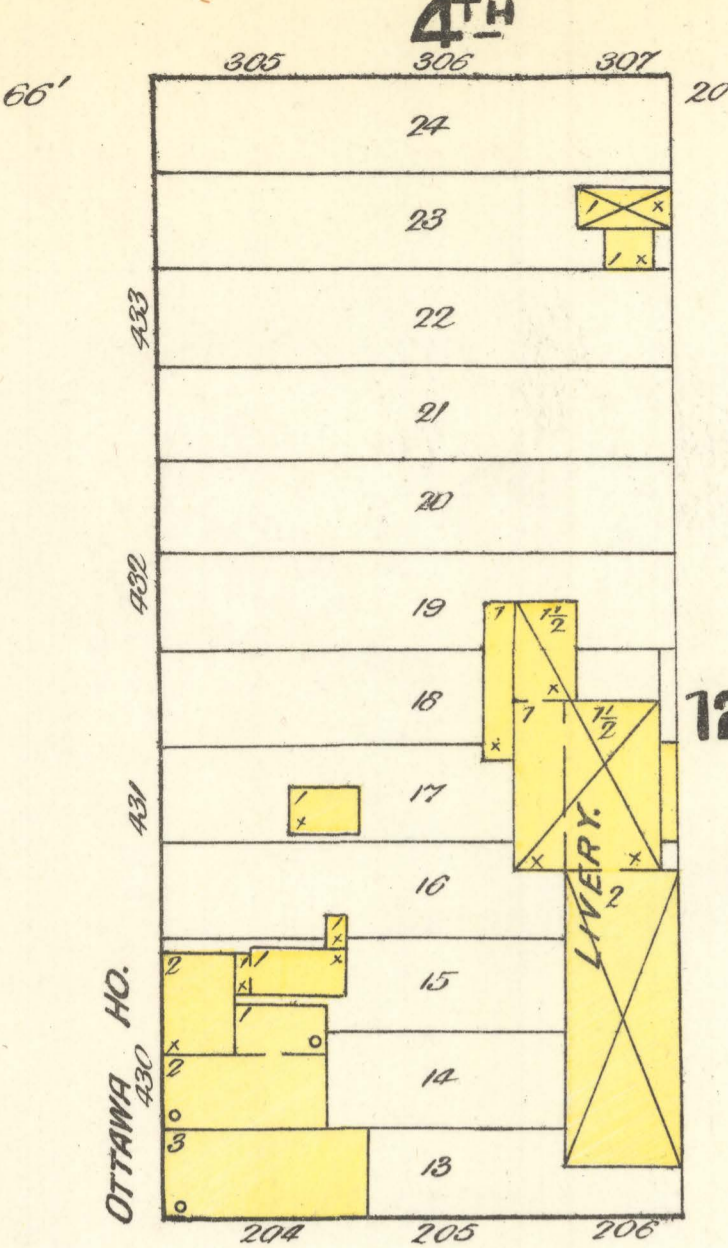
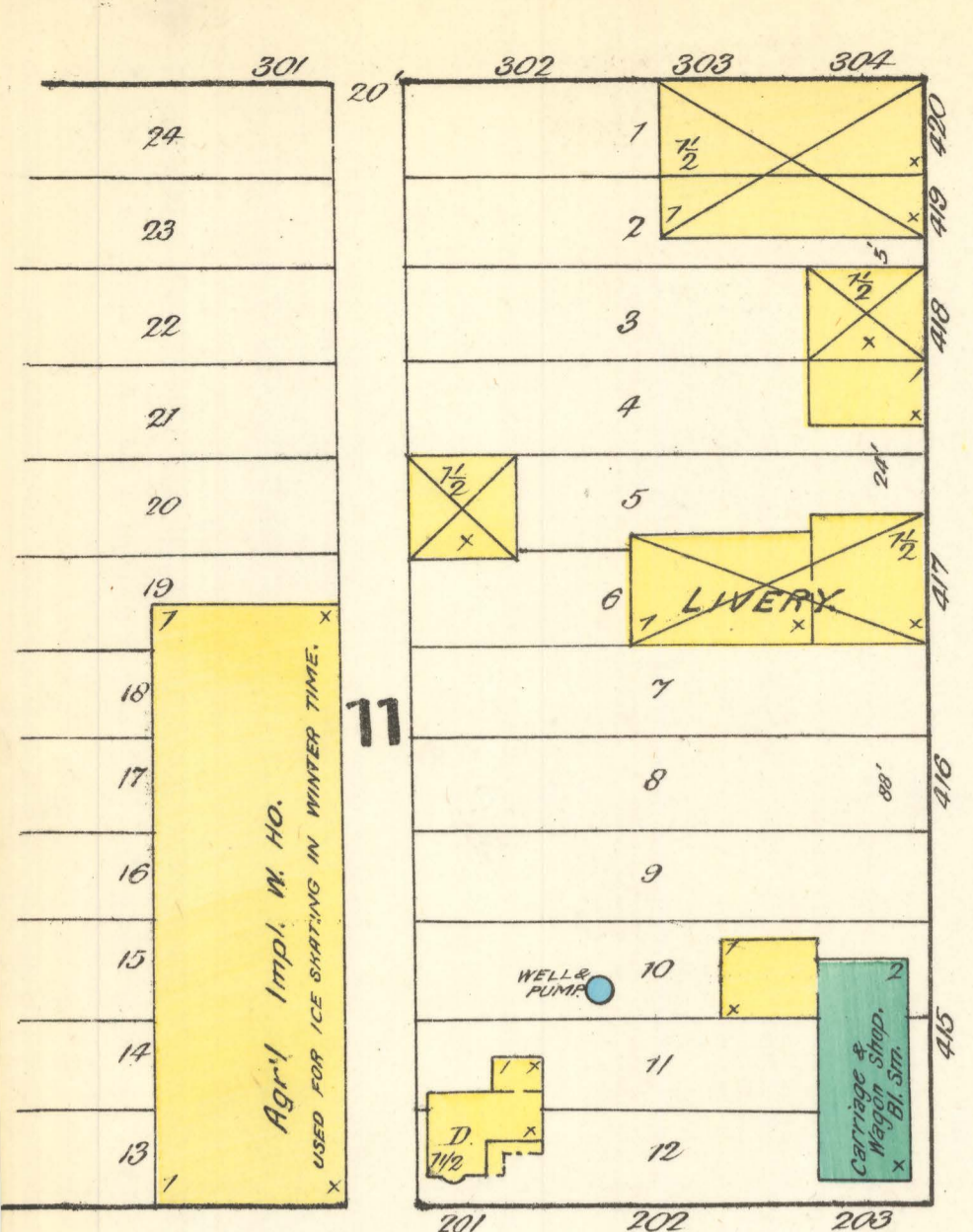
Sanborn Map Company, "Grafton, 1891" (1891). *Sanborn Maps of North Dakota*. 134.
<https://commons.und.edu/sanborn-maps/134>

This Book is brought to you for free and open access by the Elwyn B. Robinson Department of Special Collections at UND Scholarly Commons. It has been accepted for inclusion in Sanborn Maps of North Dakota by an authorized administrator of UND Scholarly Commons. For more information, please contact und.common@library.und.edu.

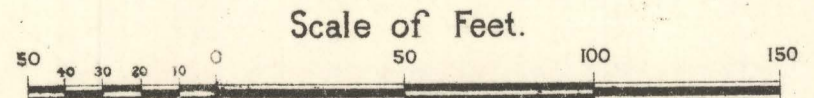


WATER WORKS: - ARTESIAN WELL, 2 DUPLEX PUMPS. (GORDON & MARVEL). CAP. 5,000 GALS PER 24 HOURS. GRADES: LEVEL. FIRE DEP'T.: 20 VOLUNTEERS, 3 HOSE CARTS, 1 H&L TRUCK, 1500' 2 1/2" HOSE, 10 HYD. F. PRESS, 125 LBS. PER SQ. IN.

Grafton, N.D. Nov. 30, 91. I have examined recent fire Map of Grafton, N.D. made by Sanborn-Perris Map Co. Div. of N.Y. & find it correct & complete. J. H. Hallam, PRES. OF LOCAL BOARD.



KEY
FIRE WALL 6 IN. AB. ROOF
FRAME PARTITION
OPENING & IRON DOOR
WINDOWS - SHUTTERS
STABLE
WINDOW IN 1ST STORY
B'LDS COLORED YELLOW ARE FRAME
RED - BRICK
BLUE - STONE
GREY - IRON
BROWN - ADDBE
GREEN - SPECIALS
MARKED (C) ARE CLOTH LINED
INDICATE RELATIVE HEIGHTS
ALTERNATE STREET NOS ARE ACTUAL
CONSECUTIVE - ARBITRARY
BROKEN LINE NEAR B'LDS - WOOD CORNICHE
SOLID - METAL



SEE