



9-1910

## Casselton, 1910

Sanborn Map Company

[How does access to this work benefit you? Let us know!](#)

Follow this and additional works at: <https://commons.und.edu/sanborn-maps>

---

### Recommended Citation

Sanborn Map Company, "Casselton, 1910" (1910). *Sanborn Maps of North Dakota*. 137.  
<https://commons.und.edu/sanborn-maps/137>

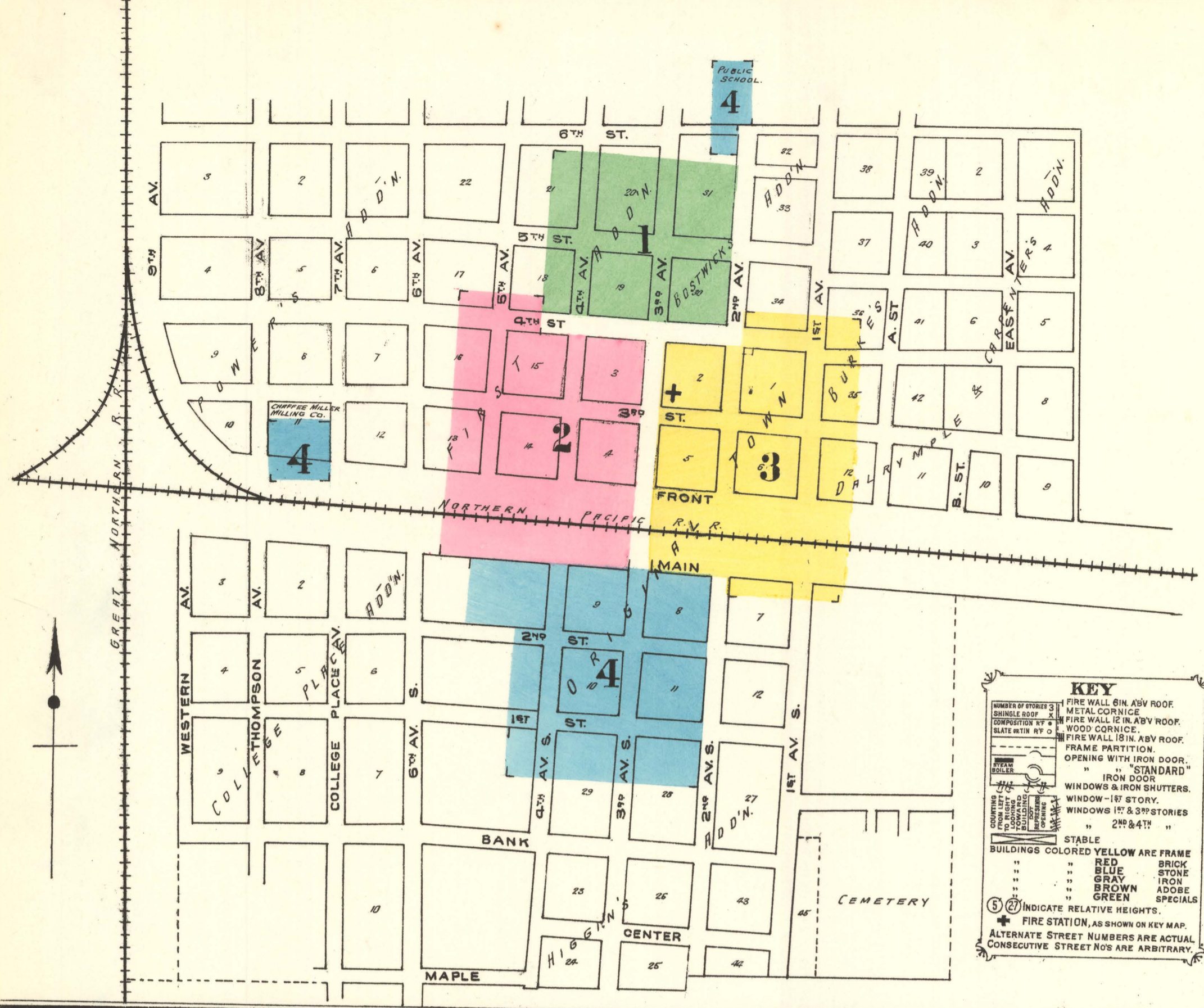
This Book is brought to you for free and open access by the Elwyn B. Robinson Department of Special Collections at UND Scholarly Commons. It has been accepted for inclusion in Sanborn Maps of North Dakota by an authorized administrator of UND Scholarly Commons. For more information, please contact [und.common@library.und.edu](mailto:und.common@library.und.edu).





INDEX.

Table with columns: SPECIALS., SHEET, M, and SHEET. Lists various buildings and their locations across sheets B, C, D, E, F, G, H, J, L.



KEY: Legend for building types (Fire Wall, Metal Cornice, etc.), materials (Brick, Stone, Iron, Adobe), and colors (Yellow, Red, Blue, Gray, Brown, Green).

WATER FACILITIES: 5 Artesian wells flowing with few lbs pressure... FIRE DEPT: One Volunteer Co. of 35 men paid on call...

