



10-1893

Casselton, 1893

Sanborn Map Company

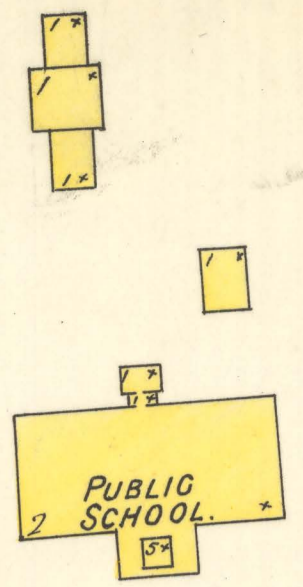
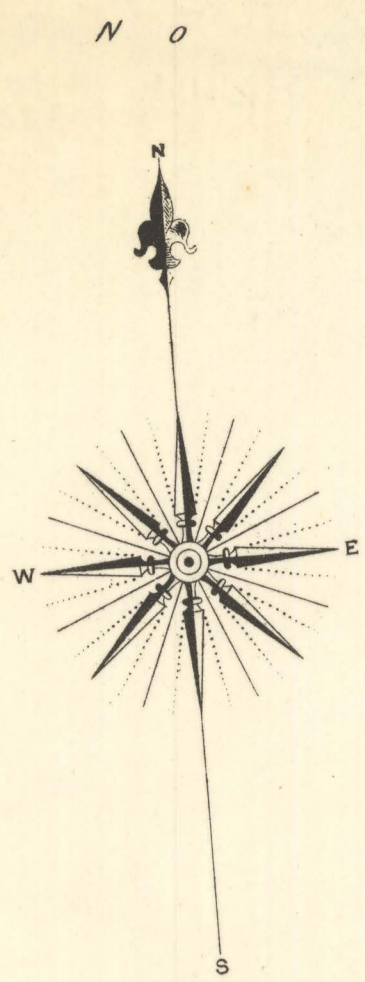
[How does access to this work benefit you? Let us know!](#)

Follow this and additional works at: <https://commons.und.edu/sanborn-maps>

Recommended Citation

Sanborn Map Company, "Casselton, 1893" (1893). *Sanborn Maps of North Dakota*. 140.
<https://commons.und.edu/sanborn-maps/140>

This Book is brought to you for free and open access by the Elwyn B. Robinson Department of Special Collections at UND Scholarly Commons. It has been accepted for inclusion in Sanborn Maps of North Dakota by an authorized administrator of UND Scholarly Commons. For more information, please contact und.common@library.und.edu.



6TH ST. 101 102 103 104

3RD AVE. 100' 105 106 107 108

100' 105 106 107 108

31

5TH ST. 100' 105 106 107 108

30

4TH ST. 100' 105 106 107 108

29

3RD AVE. 100' 105 106 107 108

21

29

FOURTH ST.

KEY

1	FIRE WALL GIN. AB. ROOF
2	SHINGLE ROOF
3	CONCRETE ROOF
4	SHALE on the ROOF
5	FRAME PARTITION
6	OPENING & IRON DOOR
7	WINDOWS - SHUTTERS
8	STABLE
9	WINDOW IN 1ST STORY
10	17' & 9"
11	21' & 4"
12	BLDG'S COLORED YELLOW ARE FRAME
13	RED - BRICK
14	BLUE - STONE
15	GREY - IRON
16	BROWN - ADobe
17	GREEN - SPECIALS
18	MARKED (C) ARE CLOTH LINED
19	(S) INDICATE RELATIVE HEIGHTS
20	ALTERNATE STREET NOS ARE ACTUAL
21	CONSECUTIVE - ARBITRARY
22	BROKEN LINE NEAR BLDG - WOOD CORNICE
23	SOLID " " " METAL "

NOTE.

WATER SUPPLY: FLOWING WELLS & CISTS, CAP: 500 GAL. EH. -
 FIRE DEPT: VOLUNTEER, FRONT 25' MICHIGAN - SMALL STEAMER
 (BY TOWNS) - WATER KEPT 400 IN DIA - 2 HOSE TRUCKS, 2000 HOSE -
 CHEMICAL ENR. ON 2 WHEELS - NO H.B.L. TRUCK OR BOILER.

9TH AV. 3 2 1 22 21 29 31 32 39 39 2 7

5TH ST. 1 6 17 18 19 33 34 37 40 3 5

4TH ST. 10 15 16 3 3 3 3 36 41 6 5

3RD ST. 14 4 5 35 42 7 8

2ND ST. 2 2 1 3 4 11 10 8

1ST ST. 11 10 9

WESTERN COLLEGE THOMPSON AV. 7 SOUTH. 23 25 27 28 29 30 31 32 33 34 35 36 37 38 39 40 41 42 43 44 45 CEMETERY.

HELENDALE ST. 14 13 12

HOWE ST. 15 16 17

SOUTH ST.

MAPLE ST. 6TH AV. 11

MAIN ST. 9 8 7

ST. 10 11 12

ST. 27 28 29 30 31 32 33 34 35 36 37 38 39 40 41 42 43 44 45

ST. 23 25 27 28 29 30 31 32 33 34 35 36 37 38 39 40 41 42 43 44 45

ST. 11 10 9

SANBORN - PERRIS MAP CO. LIMITED
 17 & 19 Broadway
 NEW YORK

Population 2,000.
 Steam & 46 Hand Engines
 No Independent Hose Carts
 Water Facilities: See Note.
 Prevailing Winds: N. W.

CASSELTON.
 Cass Co. N. DAK.
 OCT. 1893

SCALE 50 FT. TO AN INCH

COPYRIGHT 1893 BY THE SANBORN - PERRIS MAP CO. LIMITED

LIBRARY OF DANIELSON
 DEC 24 1893
 50732
 Nov 15-1893
 70 COPY DEL TO MAP DIV.
 JUN 15 1907

INDEX.

SPECIALS.		SHEET	
B	Headquarters Hotel,.....	H	2
Beidler & Robinson Lumber Co.,.....	4	O	2
C	Knights Block,.....	K	3
Cass Hotel,.....	3	P	1
Catholic Church,.....	4	M	1 & 4
Commercial Hotel,.....	4	Methodist Episc. Church,.....	1
E	Episcopal Church,.....	N	3
G	German Lutheran Church,.....	2	1
		North Dakota Milling Assoc. Elevator,.....	3
		Mill,.....	1
		N. P. R. R. Depot,.....	2
		West Hotel,.....	2
		Occidental Hotel,.....	2
		Opera House,.....	3
		Presbyterian Church,.....	1
		Public Schools,.....	1 & 4
		Town Hall,.....	3

18 PRESBYN CHURCH 19

4TH ST. 80'

AVE. 100' 106 107 108

21

5TH ST. 100' 106 107 108

29

M.E. CHURCH.

21

29

9 DALRYMPLE AND CARPENTER'S ADD.

NORTH DAKOTA MILLING ASSOCN.

FUEL: WOOD & COAL - POWER: STEAM-LIGHT
 MECH: HEAVY STEAM - 200 & 2 P.M.S. EH. PL.
 1ST: 1 DIAL SHUTTER - 1 FLOUR PACKER
 25: 10 SINGLE SETS STEVENS ROLLS - 1 SEPARATOR
 1 CENTRAL - 1 FEED ROLL
 38: 6 HENDON BLAT'S WELLS - 1 SUPERMOTIVE DUSTER
 4 PUMPIERS - 3 CYCLONE DUST COLLECTORS
 1 COCKLE MACH. - 1 PAN - 1 ABRAHARTON

FLOUR MILL

SCALE OF FEET.

50 40 30 20 10 0 50 100 150

N O E X P.