



1938

## Flickertail Follies, 1938

University of North Dakota

[How does access to this work benefit you? Let us know!](#)

Follow this and additional works at: <https://commons.und.edu/und-books>

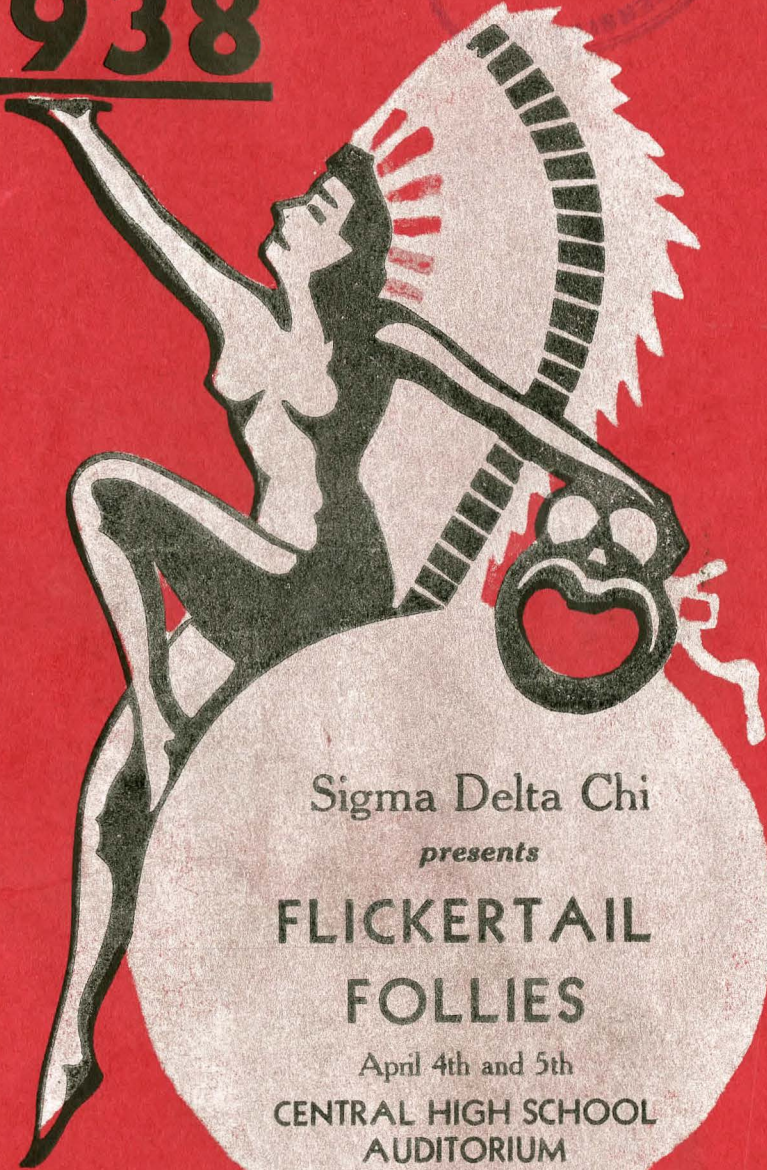
---

### Recommended Citation

University of North Dakota, "Flickertail Follies, 1938" (1938). *UND Publications*. 100.  
<https://commons.und.edu/und-books/100>

This Book is brought to you for free and open access by the Elwyn B. Robinson Department of Special Collections at UND Scholarly Commons. It has been accepted for inclusion in UND Publications by an authorized administrator of UND Scholarly Commons. For more information, please contact [und.common@library.und.edu](mailto:und.common@library.und.edu).

**1938**



Sigma Delta Chi

*presents*

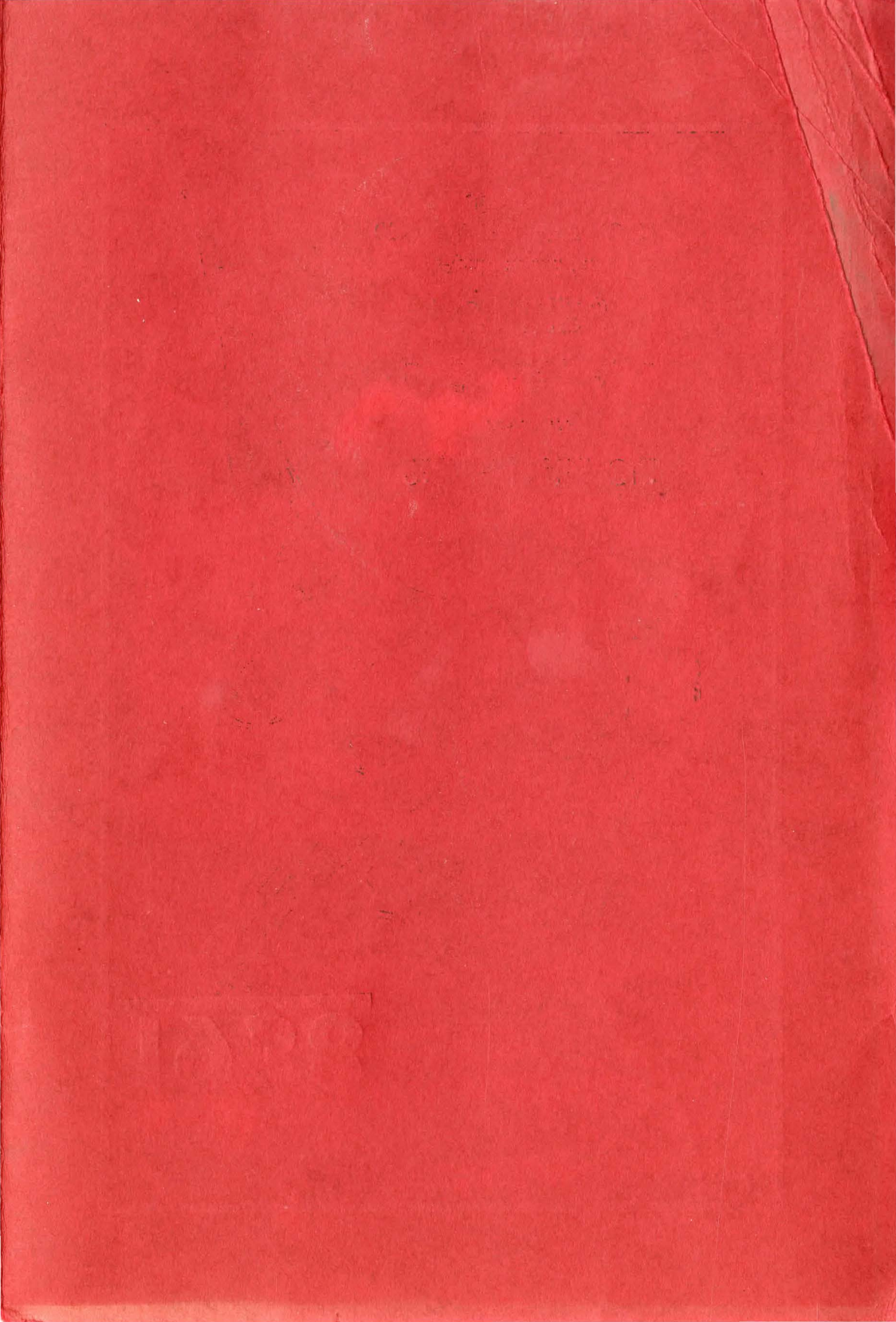
**FLICKERTAIL  
FOLLIES**

April 4th and 5th

CENTRAL HIGH SCHOOL  
AUDITORIUM

LIBRARY  
NORTH BAKOTA







# SIGMA DELTA CHI

PRESENTS

## The 1938 Flickertail Follies

### PRODUCTION STAFF

Student Manager  
ROBERT KUNKEL

Ticket Manager  
ERNEST SIMMONS

Rehearsals Manager  
BRUCE WESTLEY

Program Manager  
MELVIN RUDER

Directors  
G. BJORN BJORNSON  
JOHN E. HOWARD

Advisory Director  
ELMER HANSEN

Advertising Manager  
ARNOLD FOCHS

Chief Usher  
THAYNE JONGEWARD

Properties Manager  
PHIL POPPLER

Ass't. Student Manager  
RUSSEL ASLESON



Sponsors of the Follies, these men make up the active chapter of Sigma Delta Chi, national professional journalism fraternity. From left to right (sitting) they include: Mick Simmons, Grand Forks; G. Bjorn Bjornson, faculty adviser and head of the journalism department; Robert Kunkel, chapter president, Fessenden; J. Cameron Sim, co-faculty adviser and department instructor; Thayne Jongeward, Litchville; (second row) Kenneth Schlasinger, Streeter; Jason Quist, Grand Forks; Bert Timm, Wishek; Melvin Ruder, Bismarck; (third row) Russell Asleson, Grand Forks; Thomas Kleveland, Mayville, and Bruce Westley, Cooperstown. Not in the picture are Arnold Fochs and Phil Poppler of Grand Forks.

### Group Managers

Alpha Chi Omega — Elizabeth Morrison.

Alpha Phi — Gladys Risem

Alpha Tau Omega — Orville Bergren and Vern Johnson.

Delta Delta Delta — Audrey Jones

Delta Gamma — Luverne Swendiman

Delta Tau Delta — Don Hiestand

Delta Zeta — Jean Lierboe

Independents — Elaine Odegard and Doris Nelson

Kappa Alpha Theta — Alice Forkner

Kappa Sigma — Lyle Mayer

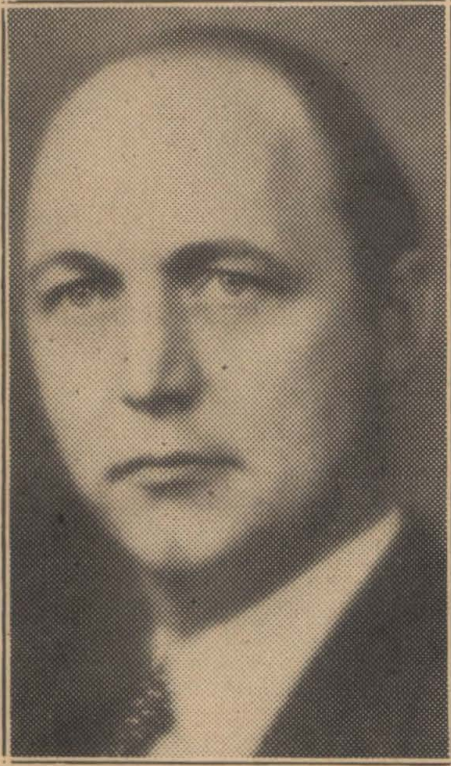
Lambda Chi Alpha — Neil Quast

Sigma Alpha Epsilon — Mac Crawford

Sigma Chi — Bernard Black

Tau Sigma Rho — Lionel Monda





**G. BJORN BJORNSON**



**JOHN E. HOWARD**

In just a few minutes the curtain will rise on the 1938 edition of the Flickertail Follies. The outstanding event of the University entertainment year, the Follies are probably the most elaborate amateur production staged in the state of North Dakota.

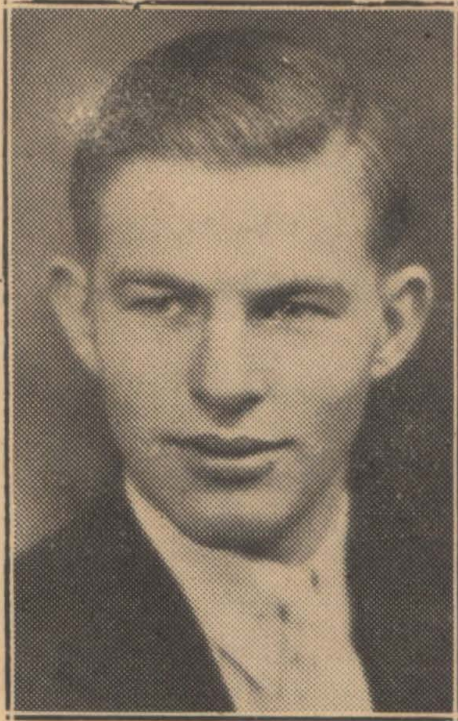
Taking part in the 12 acts of the show are 218 of the 1,952 University students. Each group originated their skit, prepared the continuity, arranged the music and lighting effects, and designed their own costumes and settings. Participating groups choose a manager for their acts, who, in turn, is the contact man working with the directors and student manager.

With profits of previous productions, Sigma Delta Chi has been able to donate money which was used by the University to equip completely a printing shop on the campus. In this shop, journalism students learn the problems of practical newspaper work. Here, too, is printed the campus newspaper, The Dakota Student, and numerous other University publications.

Each of the participating acts this year is being guaranteed an amount to cover the cost of costumes, settings and music. After expenses are deducted the profits will be divided 50-50 between the groups sponsoring the acts and Sigma Delta Chi. Prizes are being offered the best acts in the four divisions which include; combined Greek letter groups, long fraternity and sorority presentations, and the short skits.

And so, with a unique feeling of pride, Sigma Delta Chi gives you the eleventh annual Flickertail Follies.





**ROBERT KUNKEL**  
Student Manager

For three years, Bob Kunkel has been student manager of the Flickertail Follies. Now a senior, he holds a record, for with the successful completion of this show, he will have been the only University of North Dakota student to ever have directed three Flickertail Follies.

**Davis** TAILOR  
MADE **Clothes**

« FOR PARTICULAR MEN »

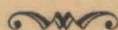
**Havig's Style Center**

Tel 257 for Appointment

10 North Third St.



# Stinson Chevrolet Co.



## ALPHA PHI

PRESENTS

### "Rain on the Roof"

A Rainy Afternoon—Two modern girls: Marguerite Given, Kathryn Schlukbier.  
Graduation picture singing chorus: (front row), Mabel Hatcher, Marian Sarles, Isabelle Rystad, Jeanette Morgan, Norma Hanson; (back row), Dorothy Bridgeman, Norma Neperud, Marcella McGinn, Ruth Sorlie, Virginia Sinner, Lorraine Highum, Kathryn Sell.

The Beautiful Lady—Six dancers from Days of 1890: Jean Betty Aamoth, Virginia Bonzer, Sylvia Cooper, Dorothy Sarles, Patricia Sayler, Roberta Finlay.

The Beautiful Lady Soprano Soloist—Anna Gislason.

While Strolling Through the Park—A Comedy of 1890: Eleanor Flett, Verna McGregor.

Easter Bonnet—Dancing and Singing Choruses.

The One Rose—Anna Gislason.

Rain Memories—Finale: Ensemble.

# J. C. PENNEY COMPANY

INCORPORATED

*Easter Apparel for the  
Entire Family*

GRAND FORKS, N. D.



Greetings Cards

Party Decorations

Bridge Supplies

STEEL OFFICE EQUIPMENT

# Colborn's Stationery Service

Phone 647

We Deliver

Cor. 4th St. & DeMers

## TAU SIGMA RHO

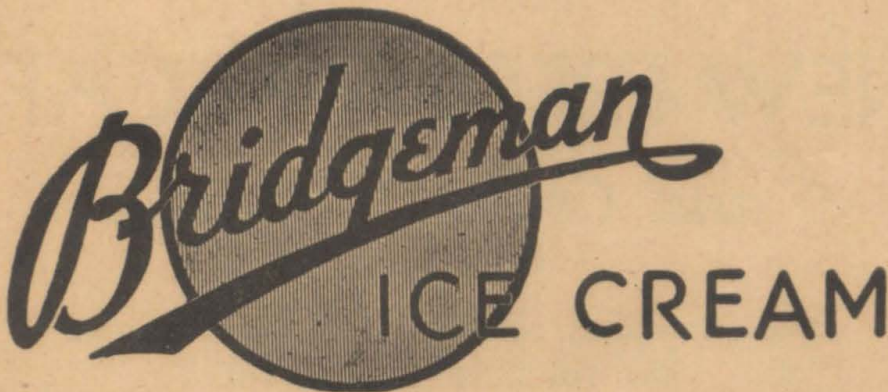
PRESENTS

### "The Chafe and Sunburn Hour"

Glen Cut-Throat Parker Bergen . . . . .	Perry Moothart
Marje Beade. . . . .	L. Stewart Benson
H. Foster Jones McCarthy . . . . .	John Smith
M. Beatrice Olson . . . . .	Vernone Lundberg
Messenger Boy . . . . .	Joe Miltenberger
Announcer . . . . .	Kenneth Dysart
A. Russell Know-it-all Oliver . . . . .	Bill Baird
Clarence Leo . . . . .	Roy Neste
Claude Buegle . . . . .	Aaron Prondzinski
Phil Poppler . . . . .	James Hallen
Ned Sparks . . . . .	Fred Zaharee
Richard Beck . . . . .	Ingevald Renstrom
Beta Pledge . . . . .	John Ogilvie

Costumes by Alex Skoropat, Stage Manager Bob Campbell

## EAT AND ENJOY THE NEW



RED RIVER PRODUCE CO.

GRAND FORKS, N. D.



# Congress Candy Company

Grand Forks      North Dakota      Fargo

## SIGMA CHI

PRESENTS

### “Riding to Glory on a Trumpet”

Doctor Kopenhagen . . . . .	Pershing Boe
Doctor Boi . . . . .	Jack Lynch
Doctor Legen Armoff . . . . .	Harper Thorpe
Nurse . . . . .	Bernard Black
Patient . . . . .	Wyner Rorvig
Undertaker . . . . .	Eldred Swingen
Photographer . . . . .	Omiston Kermott
Chorus: Gordon Aamoth, Jay Allen, Edward Alm, John Dahl, Allen Dragge, Willis Brown, William Lontz, Paul Stratte, Don Peppke.	

MAKE THE EVENING COMPLETE BY VISITING THE

## NEW FREDERICK CAFE *and Cocktail Lounge*

WHERE YOU'LL ALWAYS FIND TASTY FOODS  
AND THE BEST OF BEVERAGES



## *After the Show*

# Meet Me at the CAMPUS CAVE

THAT'S WHERE THE GANG WILL BE

## DELTA DELTA DELTA

PRESENTS

### "Swingsters Court"

Bailiff	Frances Boese
JURY: Suzanne Balmer, Kaye Doering, Bernice Haigh, Juanita Irwin, Lorraine McLaughlin, Margaret Ottis, Luella Rapp, Jeanne Reff, Dorothy Stewart, Inez Muriel Ulve	
Judge	Mildred Burns
Prosecuting Attorney	Mary Lou DeMouilly
Miss Goona Goo	Frances Dryburgh
Defense Attorney	Marion Jane Leslie
Saxaphone Sal	Mildred Hein
Irish Washwomen	Mary Calnan, Dorothy Nelson
Whistler	Jean Clay
Sadie Swing	Vivian Coghlan

Play all you like . . . Like all your play

## AFTER THE FOLLIES

IT'S THE

# Dacotah Lounge



AFTER THE

◀ **BOB**

EAST GRAND FORKS

*Air Cond*

ALPHA CHI OMEGA

PRESENTS

“Alice in Wonderland”

Alice . . . . . Doris Krueger  
Rabbit . . . . . Marian Hargraves  
Jester . . . . . Rose Jongers  
Gardeners . . . . . Ellamina Thompson, Eleanor Canan, Angeline Wolfe  
King . . . . . Marcella Jestrab  
Queen . . . . . Vera Johnston  
Attendants . . . . . Jean Waag, Vivian Skadsdamen

Costumes—Elizabeth Mortenson, Marian Hargraves, Jean Waag.

Properties—Ellamina Thompson, Marcella Jestrab.

« **Compliments**



SHOW VISIT

# BIES



*tioned Throughout*

MINNESOTA

Delta Zeta and Delta Tau Delta

PRESENT

“Black Panoramic Rhythm”

From Congo to Harlem-town

Dance—Jean Lierboe.

Trumpet Solo—Norman Schmoll.

Soloist—Louis Johnston.

Singing Chorus—Virginia Connors, Drucilla Boehlke, Elise Anderson, Frances Lynch, Gwen Lager, Helen Berg, Margaret Johnson, Phyllis Falkanger, Helen Ess, Wayne Twito, Paul Kvenmoen, Vincent Rueter, Jack Weller, John Hewitt, Edgar Baldner, Lynn Byrne, Francis Timlin, William Wiese.

Soloist—Margaret Johnson.

Minister—Raymond Isackson.

Lazy Buck—Roderick Rosaaen.

Quartet—Louis Johnston, Paul Kvenmoen, Vincent Rueter, Francis Timlin.

Dance—Ruth DeLano, Roderick Rosaaen.

Dancing Chorus — Phyllis Falkanger, William Wiese, Ivy Kvernstoen, Wayne Twito, Helen Hulick, Jack Weller, Gwen Lager, Edgar Baldner, Roberta Caruth.

Clarinet—Don Hiestand.

Costuming—Gwen Lager.

Makeup—Lila Greene, Ted Beeman.

Setting—Louis Thompson, Everett Winkes.

of a Friend »



***Mandel Furs***  
***NORTH DAKOTA'S LEADING FURRIERS***

Grand Forks, N. D.

---

---

***Intermission***

---

---

**NORTHERN STATES POWER CO.**

GRAND FORKS, N. D.



***"Prompt and Efficient Service"***



ON CREDIT  
**Held & Burkhardt**  
 RELIABLE JEWELERS

GRAND FORKS, N. DAK.

8 North 4th Street

Phone 839

## SIGMA ALPHA EPSILON

PRESENTS

### "Variety Show"

Prologue . . . . .	William VanHorne
Theme Song . . . . .	My Time Is Your Time
Snow White and the Seven Dwarfs—	
Dwarfs: Emil Johnejack, Andrew Froelich, Jelmer Shjeflo, Ted Kasper,	
Edward Miluck, Charles Nelson, Ira Fordyce.	
Snow White . . . . .	Rogers Thysell
Prince Charming . . . . .	Tobias Casey
Queen . . . . .	Frederick Tharp
Tramp . . . . .	Frank Peterson
In the Still of the Night . . . . .	William VanHorne, Soloist
Orchestra—Drums, Frank Foster; Trombone, Bruce Rinker; Trumpets, Mac	
Crawford, Walter Britten; Saxaphones, Earl Elznic, Joe Donovan, Paul	
Smith, Alton Shjeflo; Piano, Eugene Reed; Violin, Thomas Haigh.	



## LAMBDA ALPHA

PRESENTS

### "Foo-ology at U. N. D."

SCENE: The Dedication of the New School Building; a Modern Glorified Feat of Engineering.

Radio Announcer . . . . .	Francis Sheaf
Professor Felix J. Vondracek . . . . .	Conrad Hager
President John C. West . . . . .	Leo Schammel
Professor John L. Rezzatto . . . . .	Bernard Lyons
John E. Howard . . . . .	Roger Stolberg
Audience . . . . .	??????

Foo Quartette—Elmer Anderson, Russell Kilen, Lewis Shores and Ralph Keeley  
 Stage Managers—Paul Schammel and Merlin Kilen

# Cooper Studio

LET US MAKE YOUR  
 PHOTOGRAPH FOR

## Easter

We assure you of a very  
 pleasing photograph



# DELTA GAMMA

PRESENTS

## “Melody Trio-Let”

An Evolution of Music and Dance from 1900 to 1938

### GAY NINETIES—

Will You Remember—Ruth Fursteneau.

Floradora Sextette—Phyllis Duckstad, Elaine Swiggum, Dorothea Stinson,  
Mary Jean McFadden, Marjory Nelson, Ina Mae Guss.

The Bowery—Phyllis Duckstad, Jean Ruud.

### JAZZ AGE— —

My Man (as sung by Fannie Brice)—Ann Louise Bacheller.

### MODERN SWING—

Top Hat Tap—Betty Jane Swendiman.

Swingettes — Phyllis Duckstad, Mary Jean McFadden, Elaine Swiggum,  
Darlyne Stinson, Audrey Larkn, Helen Oppgard, Peggy Jane Skeels  
Ina Mae Guss.

Trionotes—Ruth Fursteneau, Betty Jane Swendiman, Merle Lovell.

Melodiers—Betty Aaker, Beth Zimmerman, Marian Griffith, Grace Erick-  
son, Alice Mae Everett, Jean Beth McKay, Dorothy Helgerson, Jeanette  
Halvorson, Josephine Gronna, Doris Bergquist.



# ALPHA TAU OMEGA

PRESENTS

## “Ten Sights in a Barroom”

- Swede Johnson . . . . . LeRoy Johnson  
Ishkabibble . . . . . Elwood Engemoen  
Shorty . . . . . Verne Augustine  
Snowball . . . . . Orville Bergren  
Spike . . . . . Dale Farringer  
Olson-Johnson Team . . . . . Verna Johnson  
Waiter's Quartet—Bill Purvis, Juel Schroeder, Bob Lynch, Bob Baumann.  
Bar-fly Chorus—Harry Rice, Clifford DuRand, Raymond Hitchcock, Theodore  
Strieble, Edward Ruud, Charles Schroeder, Norman Neuenschwander, Stan-  
ley Walsh, Donald Roney, Howard Alphson, Gudmunn Sjue and James  
Budge.



# THE INDEPENDENTS

PRESENTS

## “The Four and Twenty Black Birds”

King	Clayton Mundt
Queen	Olwen Rowland
King's Attendants	Jacob Plain, Milton Wennerstrom
Queen's Attendants	Marjorie Buttz, Marjorie Taves
Main Chef	Earl Mundt
Knave of Hearts	Gordon Ebbe
Trio—Little Miss Muffet	Phoebe Ann Quist
Little Bo Peep	Jeanne Nelson
Little Red Riding Hood	Doris Nelson
Page Boy	Ruth Coghlan
Jack-Be-Nimble	Horace Johnson
Chefs	Norman Wright, George Kolberg



## Kappa Alpha Theta---Kappa Sigma

PRESENTS

### “Caprice Cosmopolitain”

PART I: Caprice Viennois.

PART II: Caprice Argentine.

PART III: Caprice Americain.

Dancing Chorus — Ruth Chance, Rosalyn Nielson, Lorraine O'Keefe, Verone Wagness, Ann Ertresvaag, Glen Guss, Ed Lawson, Ross Colberg, James Craven, Ed Donovan, Herbert Nelson.

Tango by Adelaide Hanson and Ray Check. Solo Tap by Eleanor Eide.

Glee Club—Dorothea Sitz, Alice Forkner, Eleanor Wold, Jane Gilbertson, Elizabeth Taylor, Patrick Tisdale, Martha Lou Johnson, Thorice Sveen, Bjarne Svare, Leslie Kremer, Robert Brownawell, Dennis Solberg, Jack Humphreys, Vern Nelson and Gregory Dahlen.

Organist—Lyle Mayor.

Dances Supervised by Eleanor Eide.

Singing Supervised by Alice Forkner and Lyle Mayer.

Setting by James Barger and Kenneth Keyes.

The STATES Ballroom

and the STATES TAVERN

WHERE THE CROWD GOES



# Thank You!

Sigma Delta Chi extends sincere thanks to the many persons and organizations who have assisted in the production of the 1938 Flickertail Follies. The fraternity especially appreciates the co-operation of:

G. Bjorn Bjornson

John E. Howard

John Cameron Sim

Elmer Hansen

Clyde Herreid

R. O. Wilson

Dean M. Beatrice Olson

Elroy Schroeder

Dr. Frank C. Foley

Dr. G. C. Wheeler

Mrs. Bertha Johnston

R. H. Eaton

Frederic W. Voedisch

Hywel C. Rowland

M. M. Oppegard

Bud Abrahamson

Lloyd Vernon Anthony

"Duke" Aaserude

The Dakota Student

The Grand Forks Herald

Station KFJM

The Shopper's Guide

Mothers' Clubs

Act Managers

Alumni Groups

Area Newspapers

Poppler Piano Co.

E. G. Felt.

FOLLIES ORCHESTRA: Frank Goodwin, Herbert Lovett, Peter Hoehl, Grant Herreid, Robert Kerns, Clifford Bennington, John Hokanson, Gordon Erickson, Clyde Herreid, Everett Perrin.

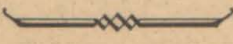


## HELLER'S

Headquarters for LOUISE MULLIGAN DRESSES

SILVER MARC COATS and SUITS

BRADLEY KNIT DRESSES





Compliments of



---

---

**Whitey's**  
WONDER BAR AND CAFE

---

---



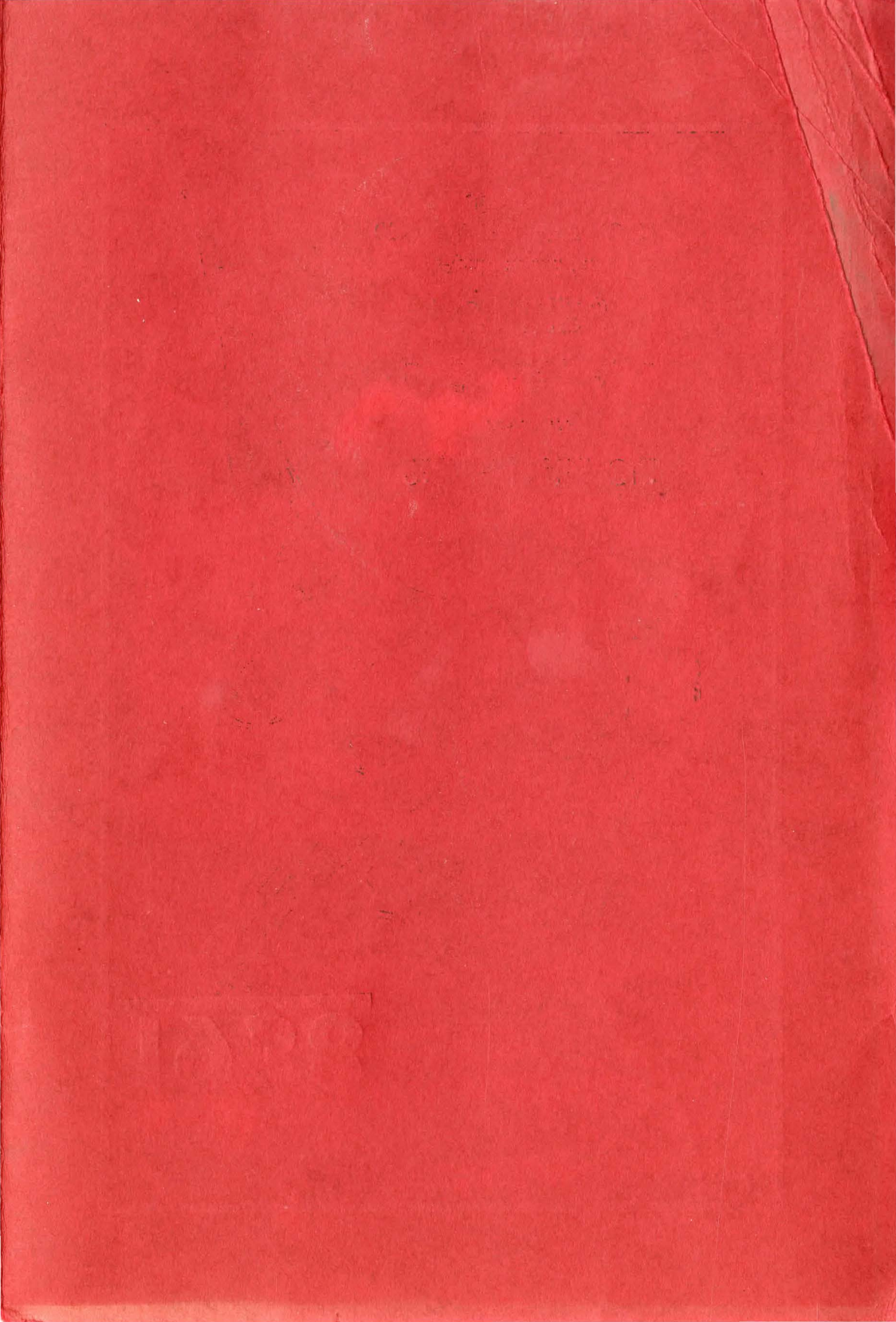
East Grand Forks, Minn.



BUY "DAKOTA MAID" FLOUR

U. N. D.  PRESS







**KARNES & WALSKI**

---

---

***AT THE BRIDGE***

---

---

**— K & W —**

*“We Serve to Serve Again”*

---

**East Grand Forks, Minn.**

***Since 1917***