



1939

## Flickertail Follies, 1939

University of North Dakota

[How does access to this work benefit you? Let us know!](#)

Follow this and additional works at: <https://commons.und.edu/und-books>

---

### Recommended Citation

University of North Dakota, "Flickertail Follies, 1939" (1939). *UND Publications*. 101.  
<https://commons.und.edu/und-books/101>

This Book is brought to you for free and open access by the Elwyn B. Robinson Department of Special Collections at UND Scholarly Commons. It has been accepted for inclusion in UND Publications by an authorized administrator of UND Scholarly Commons. For more information, please contact [und.common@library.und.edu](mailto:und.common@library.und.edu).

1939

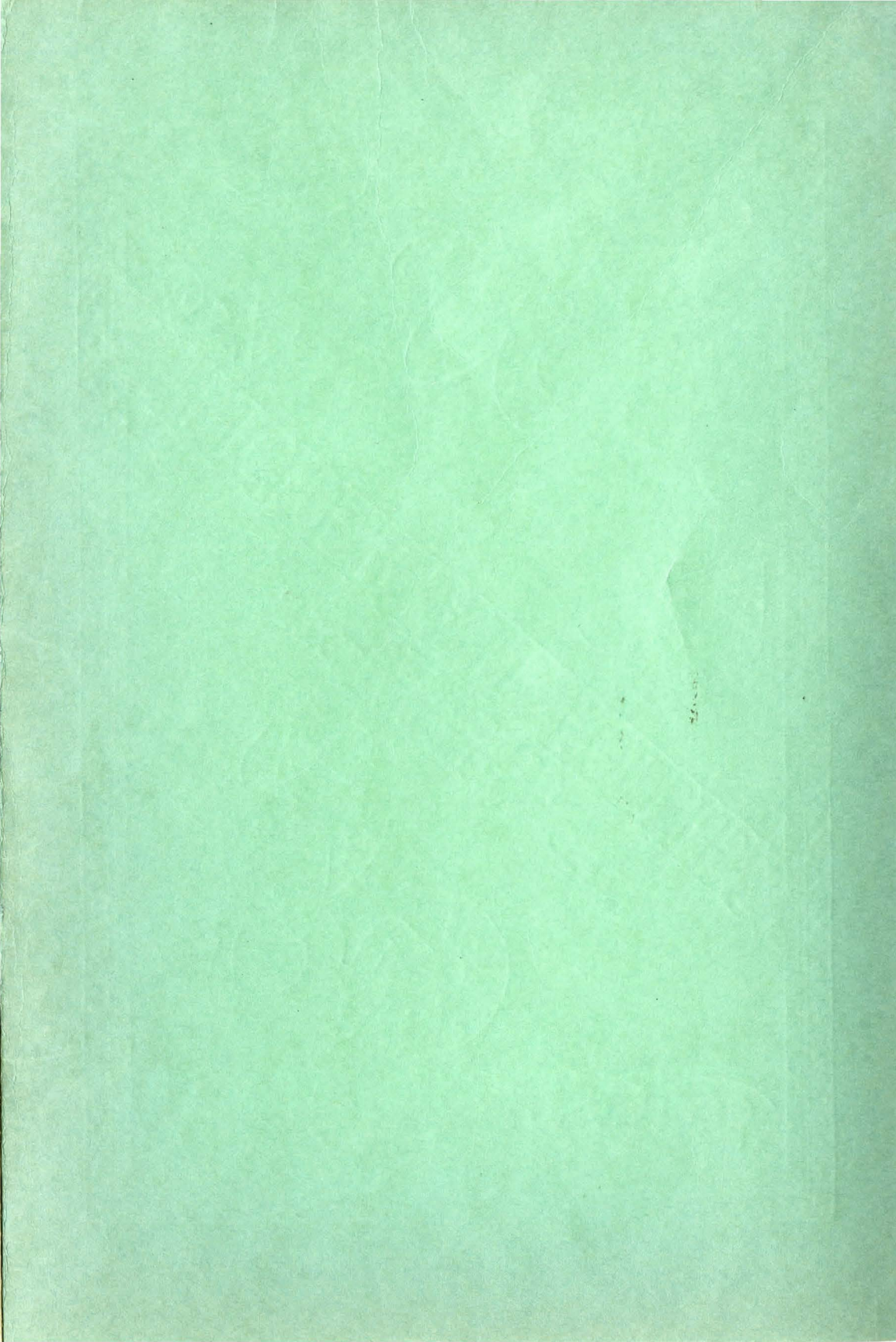


SIGMA DELTA CHI  
PRESENTS

# FICKERTAIL FOLLIES



L. LANGER



# Sigma Delta Chi

presents

## The 1939 Flickertail Follies

### Production Staff

Student Manager	-	-	-	-	-	-	Russell Asleson
Directors	-	-	-	-	-	G. Bjorn Bjornson, John E. Howard	
Ticket Manager	-	-	-	-	-	-	Israel Auerbach
Rehearsals Manager	-	-	-	-	-	-	Kenneth Schlasinger
Publicity Manager	-	-	-	-	-	-	Hollis Hoff
Ass't. Student Manager	-	-	-	-	-	-	Orville Bergren
Properties Manager	-	-	-	-	-	-	Merlin Kilen
Program Manager	-	-	-	-	-	-	Hollis Hoff
House Manager	-	-	-	-	-	-	Paul Schammel



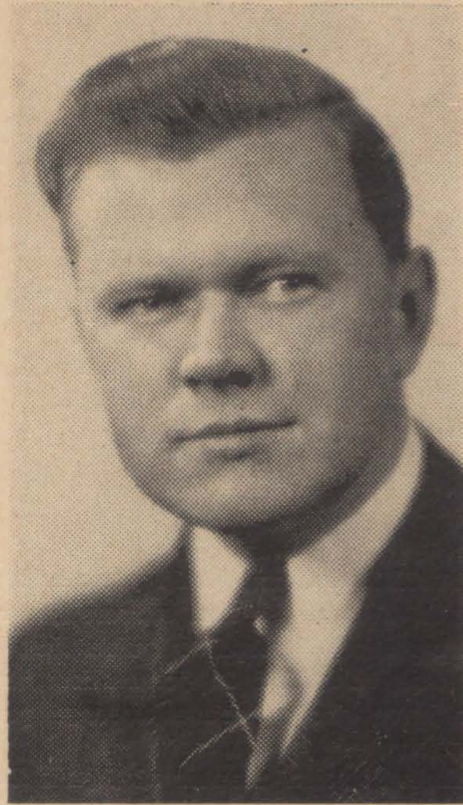
SIGMA DELTA CHI, national journalistic fraternity has undergraduate chapters in 41 colleges and universities throughout the United States. Membership standards require that actives be juniors or seniors regularly enrolled in journalism, having above average scholastic rating and to have shown above average proficiency in work on campus or other publications.

● Active members of North Dakota chapter of Sigma Delta Chi are: Kenneth Schlasinger, Streeter, president; Russell Asleson, Grand Forks, vice president; Israel Auerbach, Garrison, treasurer; Hollis Hoff, Cooperstown, editor of Flicker Flashes, official publication; Bert Timm, Wishek, secretary; Melvin Ruder, Bismarck, graduate member; Phil Poppler, Grand Forks and Verner Dill of Oakes. Advisers are G. Bjorn Bjornson, head of the journalism department and J. Cameron Sim, department instructor.

● Pledges are Robert Callan, Wahpeton; John McEnroe, Grand Forks; Leslie Gruber, Ft. Totten; William Fearn, Fargo; Robert Hammes, New England; Edward Oiseth, Glenburn; William Baird, Bottineau; Sigurd Swenson, Larimore; Donald Dahl, Rhame; Leeward Lee, Michigan City, Ind.; Merlin Kilen, Stanley; Orville Bergren, Fargo and Paul Schammel of Kenmare.

### Group Managers

Alpha Tau Omega	-	-	-	-	-	-	Vernon Johnson
Chi Omega	-	-	-	-	-	-	Lorraine Briggs
Delta Delta Delta	-	-	-	-	-	-	Dorothy Stewart
Delta Gamma	-	-	-	-	-	-	Helen Oppegard
Delta Tau Delta	-	-	-	-	-	-	Lynn Byrne
Delta Zeta	-	-	-	-	-	-	Margaret Johnson
Gamma Phi Beta	-	-	-	-	-	-	Cecilie Henry
Kappa Alpha Theta	-	-	-	-	-	-	Ann Ertresvaag
Kappa Sigma	-	-	-	-	-	Harry Mowery and Grant Herreid	
Lambda Chi Alpha	-	-	-	-	-	-	Orville Lyons
Pi Beta Phi	-	-	-	-	-	-	Rebecca Onstad
Phi Delta Theta	-	-	-	-	-	-	Keith Sevison
Sigma Alpha Epsilon	-	-	-	-	-	-	Thomas Haigh
Sigma Chi	-	-	-	-	-	-	Edward Alm



RUSSELL ASLESON  
Student Manager



ONIGHT, in just a few minutes, the curtain will rise on the 1939 Flickertail Follies, outstanding production of the University entertainment year. The 12th annual show holds the unique distinction of being the only presentation of its kind in the United States.

- This year more than 250 students comprise the personnel of the show. Competing for prizes in each of the four divisions are seven fraternities and seven sororities, with four groups combined into two acts. Tonight you will see four short acts, six long acts and two combined numbers with the presentations varying from elaborate musicals and musical comedies to burlesques and a circus comedy.
- Each of the participating acts is being guaranteed an amount to cover the cost of costumes, settings and music. After expenses are deducted the profits will be divided 50-50 between the groups sponsoring the acts and Sigma Delta Chi.
- With the profits of previous productions, Sigma Delta Chi has been able to donate money which was used by the University to equip completely a print shop on the campus. In the shop journalism students study practical problems of newspaper production. Here, too, is printed the campus newspaper, The Dakota Student and other University publications.
- And so, with a pardonable feeling of pride, Sigma Delta Chi gives you the 1939 edition of the Flickertail Follies.



JOHN E. HOWARD  
Follies Co-Director

VETERAN CO-DIRECTOR OF THE FOLLIES SINCE ITS INCEPTION, JOHN E. HOWARD HAS DONE MUCH TO MAKE IT POSSIBLE FOR SIGMA DELTA CHI TO PRESENT THE FLICKERTAIL FOLLIES.

THE FOLLIES ORCHESTRA

Clyde Herreid, Director

Piano	-	-	-	-	-	-	-	Clyde Herreid
Saxophones	-	Grant Herreid,	Norman Peterson,	Warren Hiestand				
Trumpets	-	Robert Kerns,	Gordon Winger,	Manville Treumann				
Trombone	-	-	-	-	-	-	-	Jack Harris
Drums	-	-	-	-	-	-	-	Gordon Erickson
Bass	-	-	-	-	-	-	-	Andy Sweetland

RIDE BY BUS

EXTRA BUS SERVICE PROVIDED FOR ALL OCCASIONS

GRAND FORKS TRANSPORTATION CO.

# The STATES BALLROOM

Has Booked 20 Fine Outstanding Orchestras for the  
Coming Season.

OUR SHOWS ARE THE BEST  
Changed 3 Times a Week.

Sigma Chi

Presents

## "A DARKEY'S DAY"

Preacher - - - - - Thomas Netcher  
Soloist - - - - - Wayne Zimmerman  
Dandy - - - - - Morrell Sexton

Chorus—First Tenors, William Magill, Don Pepke, Paul Stratte and  
Carl Soderholm  
Second Tenors, William Lontz, Warren Bennett, J. Allen and  
Carlton Nelson.  
Baritones, Wayne Zimmerman, Robert Solberg, Erling Knapp  
and Morrell Sexton.  
Basses, Ormiston Kermott, Thomas Netcher, Harold Piltings-  
rud, Marvin Solien, Pershing Boe, William McCosh and Ordean  
Olson.

*After the Show*

MEET ME AT THE

# CAMPUS CAVE

THAT'S WHERE THE GANG WILL BE

# Congress Candy Company

Grand Forks

North Dakota

Fargo

Delta Zeta

Presents

## "PATTERN IN SYMMETRY"

Dancer - - - - - Kay Lawrence

Acro-Balancers - - - - - Marcy Gilbertson and Grace Alphon

Dance Chorus—Virginia Conners, Roberta Caruth, Twila Smith, Bethel  
Larson, Lorryne Grassel and Elise Anderson.

Costumes—Frances Lynch

Scenery—Charlotte Brand.

Dance Director—Anita Roisum.

Properties—Ivy Kvernstoen.

# HAVIG'S

"FOR PARTICULAR MEN"

- Arrow and Jayson Shirts
  - Arrow, Carter's and Allen A Underwear.
  - Arrow, Regal and Wembley Ties

**Fine Tailoring---Our Specialty**



# Grand Forks Grocery Co.

WHOLESALE DISTRIBUTORS OF

## M J B COFFEE

Delta Delta Delta

Presents

### "ARMY DAY REVIEW"

- PART I. Doughboys at Daybreak - - - - Chorus  
PART II. Doughboy Sweetheart - - - - Elsie Edgar  
PART III. Doughboy's Delight - Ruth Coghlan and Chorus  
PART IV. Doughboy's Dilemma—Kaye Doering, Elsie Edgar and Lois Simpson.  
PART V. The Doughboys Take Leave - - - - Chorus  
Sentries—Mary Lou DeMouly and Drusilla Deis.  
Chorus—Betty Calnan, Geraldine Klefstad, Juanita Irwin, Inez Muriel Ulve, Lois Peterson, Ellen Bakke, Lorraine McLaughlin, Mildred Hein, Luella Rapp, Phyllis Brainard, Jeanne Reff, Betty Jane Ninke, Eleanor Simmons and Dorothy Christianson.  
Costumes—Peggy Paupst.

Compliments of

# BILL LEALOS

WHERE GOOD FRIENDS MEET

East Grand Forks

Minnesota

# MANDEL FURS

North Dakota's Leading Furriers

Grand Forks, N. D.

Lambda Chi Alpha

Presents

## "TIME MARCHES ON"

SCENE—All action takes place at the gates of Hell. Characters are introduced by radio announcer as they leave Earth for Hell and interviewed by the Devil before they are allowed to enter Hell. A comedy act featuring vocal and violin solos.

Pop Vendor	- - - - -	Wallace Bjerken
Prince Olav	- - - - -	Douglas Hendrickson
Sammy Finkelstein	- - - - -	Ralph Juneau
Satan	- - - - -	Russell Kilen
WPA Workers	- - - - -	Warren Larson and Lee Steffen
Adolf Hitler	- - - - -	Bernard Lyons
Father Time	- - - - -	Harold Potter
W. C. Fields	- - - - -	Neil Quast
F. D. R.	- - - - -	Robert Rudh
Radio Announcer	- - - - -	Francis Sheaf
Mussolini	- - - - -	Roger Stolberg
Costumes	- - - - -	Leo Schammel and Dick Dunn

EAT AND ENJOY THE NEW

*Bridgeman*  
ICE CREAM

Red River Produce Co.

Grand Forks, N. D.

AFTER THE

◀ **BOB**

EAST GRAND FORKS

*Air Condition*

Phi Delta Theta

Presents

“PHI DELT FOLLIES OF '01”

Chorus—Bud Monnes, George Vaughan, Gordon Caldis, Paul Wachter,  
Byrne Sands and Bud Hagan.

Piano—Keith Sevison, Paul Smeby.

Trio: Keith Sevison, James Fair and Cliff Fering.

Bottle Band—Gordon Caldis, George Vaughan, Chadwick McLeod,  
William Spear, John Benno, James Eide, Paul Smeby  
and Keith Sevison.

Sign Changer—John Rice.

**J. C. Penney Company**

*It Pays to Shop at Penney's*

**Clothing and Shoes for the  
Entire Family.**

SHOW VISIT

# BIES



ed Throughout

MINNESOTA

Kappa Alpha Theta and Alpha Tau Omega

Present

## "TYROLEAN ECHOES"

Innkeeper's Daughter - - - - - Betty Taylor

Her Lover - - - - - Wyman Thompson

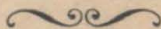
Innkeeper - - - - - Verne Augustine

Sextet—Mildred Lommen, Doris McIntosh, Doretta Peterson, Wyman Thompson, Juel Schroeder and Robert Baumann.

Singing Villagers—Jack Nevin, Robert Baumann, Wyman Thompson, Juel Schroeder, Vince Peterson, Orville Bergren, Robert Lynch, Harry Hildebrecht, Doretta Peterson, Doris McIntosh, Mildred Lommen, Thorice Sveen, Jean Harris, Ruth Hatt, Patricia Tisdale and Alice Forkner.

Dancing Villagers—Evan Lips, William Mills, Charles Schroeder, Gayton Merrill, Roy Heen, Vern Johnson, Mada Eppler, Verone Wagness, Rosalyn Nielsen, Delores Fruh, Betty Erickson and Patricia Healey.

Costumes and Scenery—Peggy Foss and Louis Haahr.



INTERMISSION



COMPLIMENTS OF

**GRAND FORKS AUTOMOBILE  
DEALERS**

# THE RYAN HOTEL

Grand Forks

FIREPROOF THROUGHOUT

Pi Beta Phi

Presents

## “PERFUMES FOR A DEBUTANTE”

DEBUTANTE - - - - - Enid Godwin

### “DEBUTANTE’S DREAM”—Lelong

Singing Chorus—Patsy Cuddigan, Betty Sallberg, Marjorie Stenson, Norma McKenzie, Rebecca Onstad, Alba Halverson, Anne Kittel and Alice Marsh.

Ballet—Alice Danuser, soloist; Donna Clayburgh, Phyllis Sweetland, Alice Fox, Mary Helen Anderson, Joyce Umlauf, Joyce Tarbell, Hazel Ellsworth, and Norma Byram.

### GUERLAIN’S “SHALIMAR”

Soloist—Alice Marsh.

Dancers—Joyce Tarbell, Alice Fox, Donna Clayburgh, and Phyllis Sweetland.

### “BLUE ORCHID”—Corday

At the two pianos—Cheryl Rodger and Madelon Stephenson.

### SCHIAPARELLI’S “SHOCKING”

Soloist—Joyce Tarbell.

Dances Arranged by Evelyn O’Keefe and Alice Danuser.

Music Arranged by Cheryl Rodger.

Costumes and Setting—Ruth Davies.

# GEO. J. HEGSTROM

Distributor of

L. C. Smith and Corona Typewriters

Carbon Paper

Ribbons

102-105 Security Building

Phone 86

IT'S NO FOLLY  
TO BE JOLLY  
AT THE 115

Kappa Sigma

Presents

"THE MONK'S SUPPER"

SCENE—The dining room of a monastery.

The Lord's Prayer - - - - Music by Josephine Forsyth  
Arranged by Edwin Kraft

Sancta Maria - - - - Early Hymn by Palistrina

Chorus—Jack Humphreys, Gregory Dahlen, Howard Nelson, Donald  
Jacobson, Vernon Nelson, Robert Kerns, Curtis Jacobson,  
Leslie Kremer, Robert Brownawell, Raymond Check, Dennis  
Solberg, Edward Donovan, Manfred Arnold, Kenneth Keyes,  
Grant Herreid.

NORTHERN STATES  
POWER CO.

GRAND FORKS, N. D.



"PROMPT AND EFFICIENT SERVICE"

FOR

Better Oil Burner Service and  
Highest Grades of Fuel

RED RIVER VALLEY BRICK CORPORATION

## Delta Gamma

Presents

### "THE WOMAN IN THE SHOE"

The Woman in the Shoe - - - Anne Louise Bachellor

Trio in the Shoe—Ruth Fursteneau, Merle Lovell, Betty Jane Swendiman

#### PART I.—"LET'S PLAY SCHOOL."

Teacher - - - - - Merle Lovell

Pupils—Betty Aaker, Doris Bergquist, Ruth Fursteneau, Jeanette Halvorson,  
Ivis Hvinden, Peggy Jane Skeels, Betty Jane Swendiman.

Baker Man - - - - - Ivis Hvinden

Patty-Cake Chorus—Ina Mae Guss, Bette Hewitt, Audrey Larkin, Louise  
Loomis, Bette Locklin, Alice McFadden, Joanne Miller, Jeanne Mor-  
row, Glenna Mae Sad, Harriet Schutt.

Goldilocks - - - - - Glenna Mae Sad

Three Bears - - - Audrey Larkin, Jeanne Morrow and Harriet Schutt

Little Bo-Peep - - - - - Lydia Langer

1, 2 Button Your Shoe—Ina Mae Guss, Lydia Langer, Bette Locklin, Joanne  
Miller, Glenna Mae Sad and Harriet Schutt.

#### PART II.—"JOHNNY, GET YOUR GUN."

Captain - - - - - Betty Jane Swendiman

Soldiers—Bette Hewitt, Audrey Larkin, Louise Loomis, Alice McFadden and  
Jeanne Morrow.

#### PART III.—"IF YOU'LL ALL BE VERY STILL."

Lullaby Girl - - - - - Ruth Fursteneau

#### PART IV.—"THERE'S MUTINY IN THE NURSERY."

Original Arrangements by Merle Lovell.

Scenery Executed by Lydia Langer.

Dances by Betty Jane Swendiman.

## CHICAGO CAFE

American and Chinese Dishes

OPEN DAY AND NIGHT

# PERSONAL LOANS

TO EMPLOYED MEN AND WOMEN

\$5 to \$300

MONARCH FINANCE CO.

303-4 Red River National Bank Building

Telephone 993

Grand Forks, N. Dak.

Chi Omega

Presents

## "THE ROYAL COLLEGE OF OZ"

SETTING: The Cave adjoining the Royal Athletic College of Oz which is located in Emerald City, the capital of the Land of Oz. Here lives the Wizard of Oz. It is compulsory to wear green glasses in Emerald City by an edict of the Wizard.

Dorothy, a little girl from Kansas	- - -	Violet Peterson
Toto	- - - - -	A Little Black Dog
Professor H. M. Wogglebug, T. M.	- -	Mary Alice MacDonald
Ozma, Queen of the Land of Oz	- - -	Clarice Granrud
The Shaggy Man	- - - - -	Janet Wallace
The Tin Woodman	- - - - -	Alice Albertson
The Scarecrow	- - - - -	Marian Albertson
The Wizard of Oz	- - - - -	Eloise Halvorsen

The Co-eds—Doris Lemke, Ethel Homme, Lorna Hillmer, Carolyn Halldorson, Phyllis Jongeward, Marie Coman, Marjorie Bruce and Lorraine Briggs.

Compliments of

# FRITZ FALGREN

THE SPORTSMAN'S BAR

East Grand Forks

Minnesota



IF IT'S CITIES SERVICE IT HAS TO BE GOOD  
TIRES, BATTERIES, POWER PROVING, MOTOR VITALIZING  
Ask Ebby About Our Many Special Services.

## EBBY'S SERVICE STATION

Cities Service Products

North Third St.

Grand Forks, N. D.

# Thank You!

Sigma Delta Chi extends sincere thanks to the many persons and organizations who have assisted in the production of the 1939 Flickertail Follies. The fraternity especially appreciates the co-operation of:

John E. Howard  
G. Bjorn Bjornson  
John Cameron Sim  
Elmer Hanson  
Clyde Herreid  
Dean Alice M. Hanson  
M. M. Oppegard  
Mrs. Victor S. Quale  
Mr. and Mrs. R. O. Hale  
Elroy Schroeder  
Program Advertisers  
Bud Abrahamson  
F. E. Dunn  
University News Service

Frank J. Webb  
Dr. G. C. Wheeler  
R. O. Wilson  
E. G. Felt  
Frederick W. Voedisch  
Act Managers  
Alumni Groups  
Area Newspapers  
The Grand Forks Herald  
The Dakota Student  
Station KFJM  
Mother's Clubs  
Poppler Piano Co.  
Dorothea Thoraldson

## Dryburgh Investment Co.

INVESTMENT TRUSTS

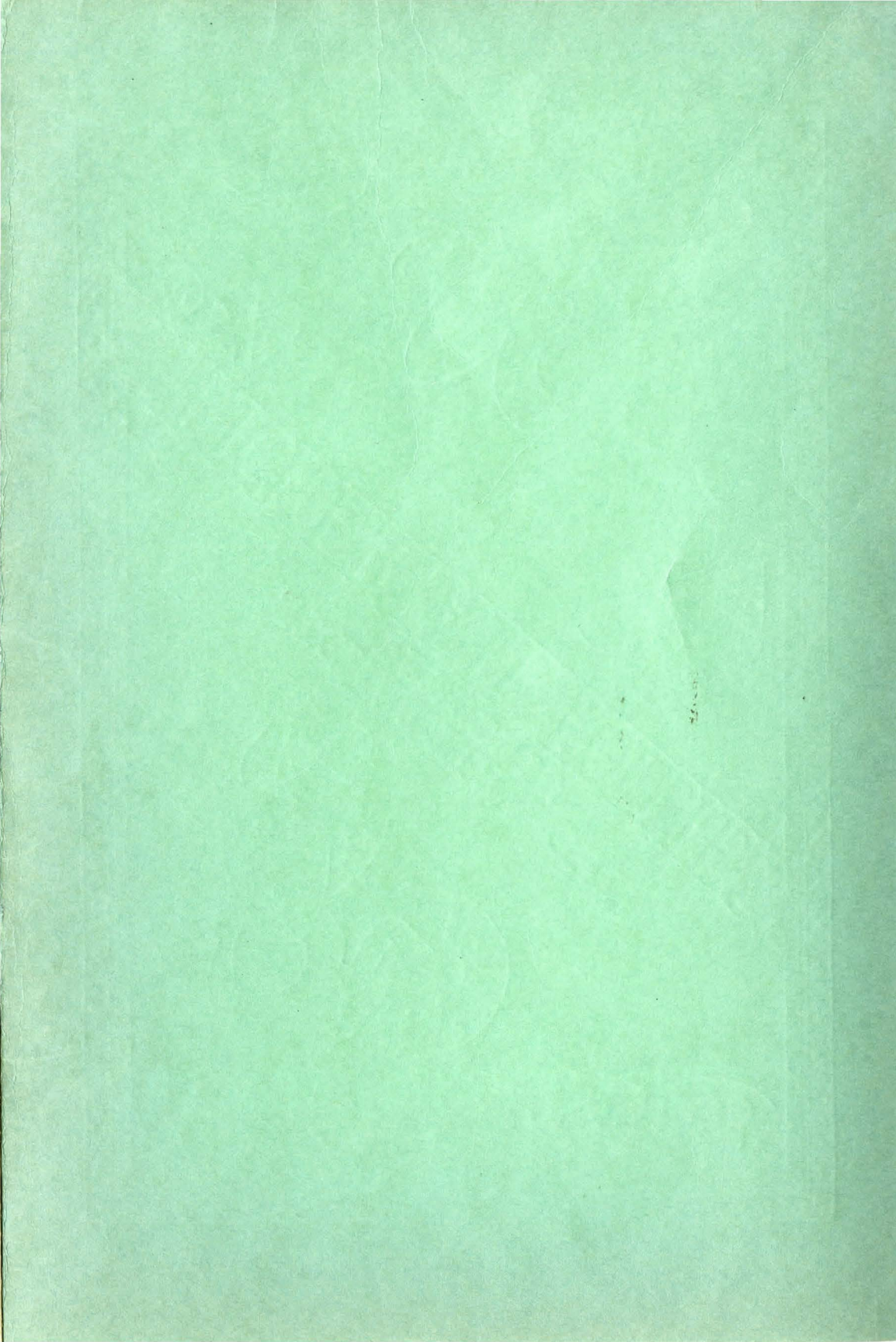
STOCKS, BONDS and INSURANCE

Telephone 379

101 Security Building

U. N. D. PRESS

BUY "DAKOTA MAID" FLOUR



# Karnes & Walski

*At The Bridge*



« K & W »

*"We Serve to Serve Again"*



**East Grand Forks, Minn.**

*Since 1917*