



1-1908

Dickinson, 1908

Sanborn Map Company

[How does access to this work benefit you? Let us know!](#)

Follow this and additional works at: <https://commons.und.edu/sanborn-maps>

Recommended Citation

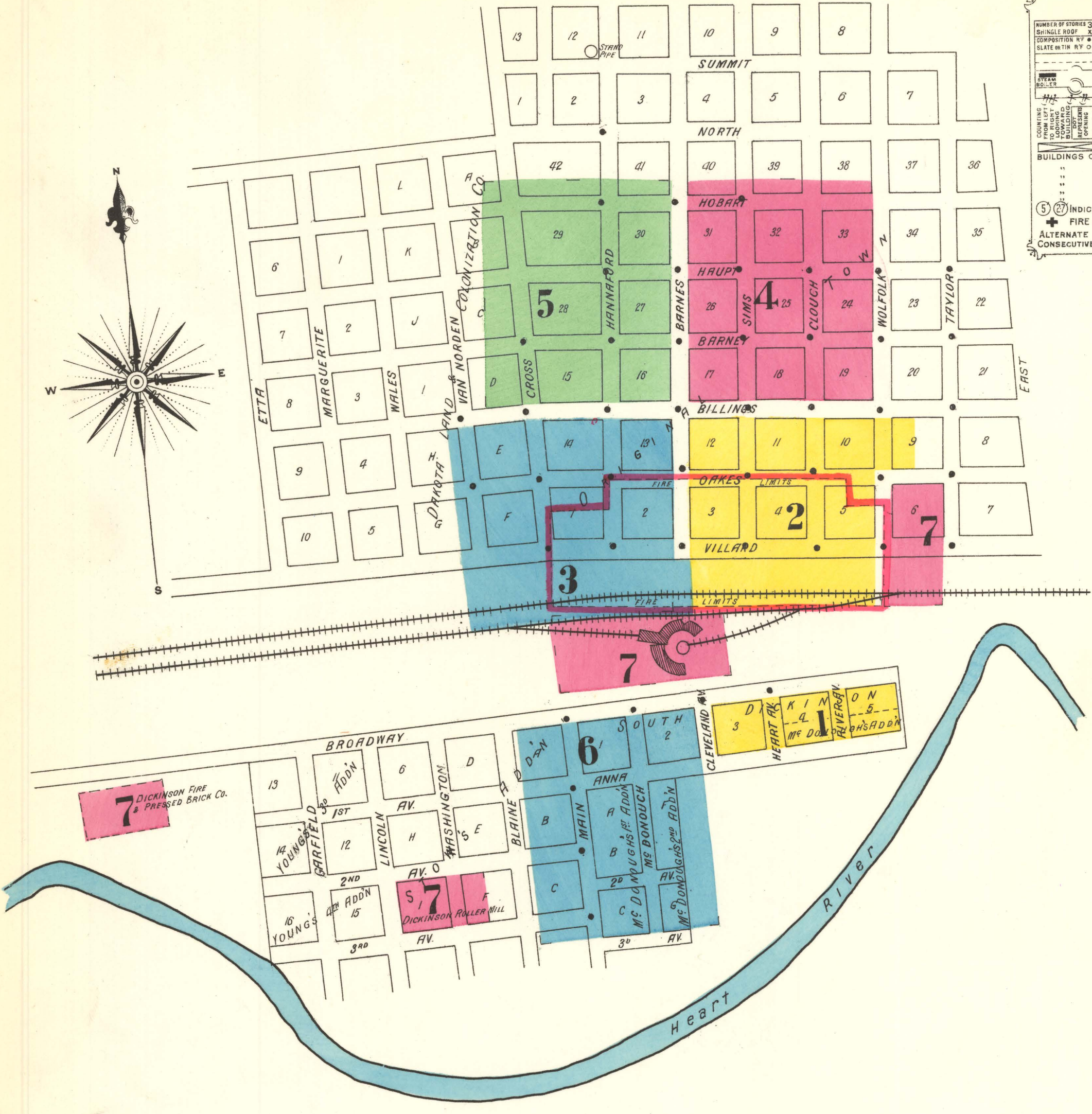
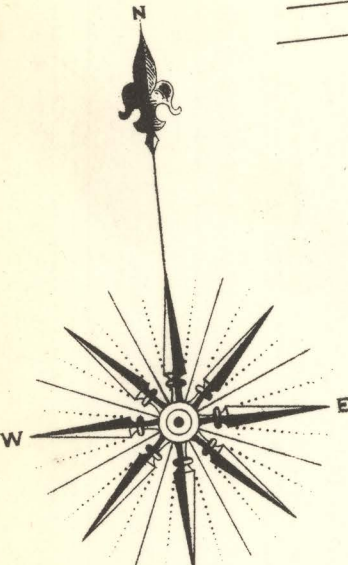
Sanborn Map Company, "Dickinson, 1908" (1908). *Sanborn Maps of North Dakota*. 57.
<https://commons.und.edu/sanborn-maps/57>

This Book is brought to you for free and open access by the Elwyn B. Robinson Department of Special Collections at UND Scholarly Commons. It has been accepted for inclusion in Sanborn Maps of North Dakota by an authorized administrator of UND Scholarly Commons. For more information, please contact und.common@library.und.edu.



Streets not paved - Public Lighting - Electric -
Town site slopes slightly to the south -
WATER FACILITIES:
Fairbanks Morse electric pump, capacity 80 gals.
per minute. Drawing from well 2' in diameter,
30' deep - 3/4" pipe, capacity 100,000 gals on 90' steel
tower - total elevation above Business Section 150'
Domestic and Fire pressure 70 lbs Gravity pressure
only - 2 Miles of 8" and 4" Mains - 50 double hydrants -
Fire Cistern capacity 20,000 gals. under City Hall and
one of same capacity in Block 16 D. - Mains laid 1906.
FIRE DEPT
Volunteers 45 Men - 3 Hose Carts - 1200' 2" Hose

KEY
FIRE WALL IS IN ASB. ROOF.
METAL CORNICE
FIRE WALL IS IN ASB. ROOF.
WOOD CORNICE.
FIRE WALL IS IN ASB. ROOF.
"STANDARD"
FRAME PARTITION.
OPENING WITH IRON DOOR.
"STANDARD"
IRON DOOR
WINDOWS & IRON SHUTTERS
WINDOW 1ST STORY.
WINDOWS 1ST & 2ND STORIES
2ND & 4TH
STABLE
BUILDINGS COLORED YELLOW ARE FRAME
BRICK
STONE
GRAY
BROWN
GREEN
SPECIALS
INDICATE RELATIVE HEIGHTS.
FIRE STATION, AS SHOWN ON KEY MAP.
ALTERNATE STREET NUMBERS ARE ACTUAL.
CONSECUTIVE STREET NOS ARE ARBITRARY.



INDEX

STREETS		SHEET	
Anna	201-217	1	1
"	801-825	6	1
B			
Barnes	401-414	3	1
"	415-431	5	1
"	501-520	2	1
"	520-543	4	1
Barney	110-134	5	1
"	201-224	4	1
Billings	201-215	5	1
"	220-231	3	1
"	301-312	4	1
"	313-327	2	1
Blaine	301-320	6	1
Broadway	15-35	6	1
"	101-120	1	1
C			
Cleveland Ave.	301-306	6	1
"	401-404	1	1
Clough	501-520	1	1
"	520-563	4	1
"	528-548	2	1
Cross	391-405	3	1
"	406-410	5	1
"	411-418	3	1
"	419-442	5	1
F			
First Ave.	101-114	6	1
H			
Hannaford	501-508	3	1
"	509-514	5	1
"	515-522	3	1
"	523-551	5	1
Haupt	301-330	5	1
Heart Ave.	575-612	4	1
Hobart	301-308	1	1
"	301-329	5	1
"	401-436	4	1
L			
Lincoln	101-110	7	1
M			
McDonough	301-343	6	1
Main	401-442	6	1
O			
Oakes	86-124	3	1
"	201-231	2	1
"	501-506	7	1
R			
River Ave.	401-410	1	1
S			
Second Ave.	101-108	7	1
"	201-212	6	1
"	301-318	6	1
Sims	601-620	2	1
"	621-628	4	1
"	629-648	2	1
"	649-680	4	1
T			
Taylor	101-106	7	1
Third Ave.	15-22	7	1
"	101-112	6	1
V			
Van Norden	201-230	3	1
Villard	186-213	2	1
"	301-333	2	1
"	401-410	3	1
"	411-424	2	1
"	701-715	7	1
W			
Washington	201-222	7	1
Wolfolk	401-408	2	1
"	409-415	7	1
"	416-429	2	1
"	601-621	4	1
SPECIALS			
A			
American Hotel		3	1
Armory		3	1
B			
Berry Block		2	1
Blatz, V., Beer Depot		2	1
C			
City Hall		3	1
Columbia Lodging House		6	1
Congregational Church		2	1
County Court House and Jail		4	1
D			
Dickinson Fire and Pressed Brick Co.		7	1
" Hospital		4	1
" Mercantile Co.		2	1
" Roller Milling Co.		7	1
" Steam Laundry		3	1
E			
Episcopal Church		4	1
F			
Fire Department		3	1
G			
German Hotel		4	1
Gund, J., Brewing Co., Depot		7	1
H			
Hannis Beer Depot		2	1
Heaton, G., Lumber Co.		3	1
High and Graded School		5	1
Hotel Kihm		2	1
Hughes & Deiter Electric Light Plant		3	1
L			
Lyon Elevator Co.		3	1
M			
Mandan Mercantile Co.		3	1
Meth. Episcopal Church		4	1
N			
Northwest Building Co., Planing Mill		3	1
N. P. R. R., Round House, etc.		7	1
" Passenger Depot		2	1
O			
Opera House		2	1
P			
Press Printing		3	1
S			
St. Charles Hotel		2	1
St. Joseph's Cath. Church and School		1	1
St. Patrick's Cath. Church		5	1
St. Paul Hotel		3	1
Soules & Butler, Lumber Yard		2	1
South Side Public School		6	1
Standard Oil Co.		2	1
V			
Villard Hotel		2	1
W			
Walton & Davis, Elevator		7	1
" Lumber Shed		2	1

NOTE - House numbers given are arbitrary.

VACANT R. R. PROPERTY

