



11-1904

Dickinson, 1904

Sanborn Map Company

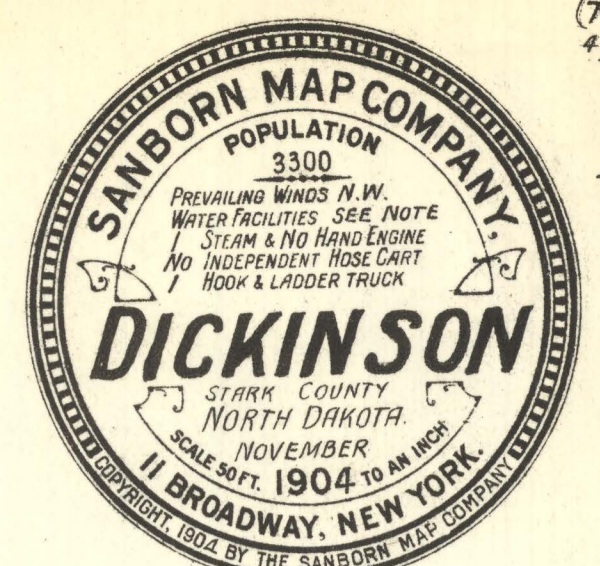
[How does access to this work benefit you? Let us know!](#)

Follow this and additional works at: <https://commons.und.edu/sanborn-maps>

Recommended Citation

Sanborn Map Company, "Dickinson, 1904" (1904). *Sanborn Maps of North Dakota*. 58.
<https://commons.und.edu/sanborn-maps/58>

This Book is brought to you for free and open access by the Elwyn B. Robinson Department of Special Collections at UND Scholarly Commons. It has been accepted for inclusion in Sanborn Maps of North Dakota by an authorized administrator of UND Scholarly Commons. For more information, please contact und.common@library.und.edu.



NOTE. Water Facilities: 3 GOOD 16" WELLS. ALSO R.R. TANK AVAILABLE WITH 2 HYDRANTS. Fire Department: VOLUNTEER CO. OF 40 MEN. 3 HOSE CARS. 1500' GOOD 2 1/2" COTTON HOSE. WATERPOUS STEAMER WITH HEATER. HOOK & LADDER TRUCK. R.R. CO. ALSO HAS A CART WITH HOSE AVAILABLE. Streets: NOT PAVED. GRADES: LEVEL. FUEL: WOOD & LIGHTER COAL.

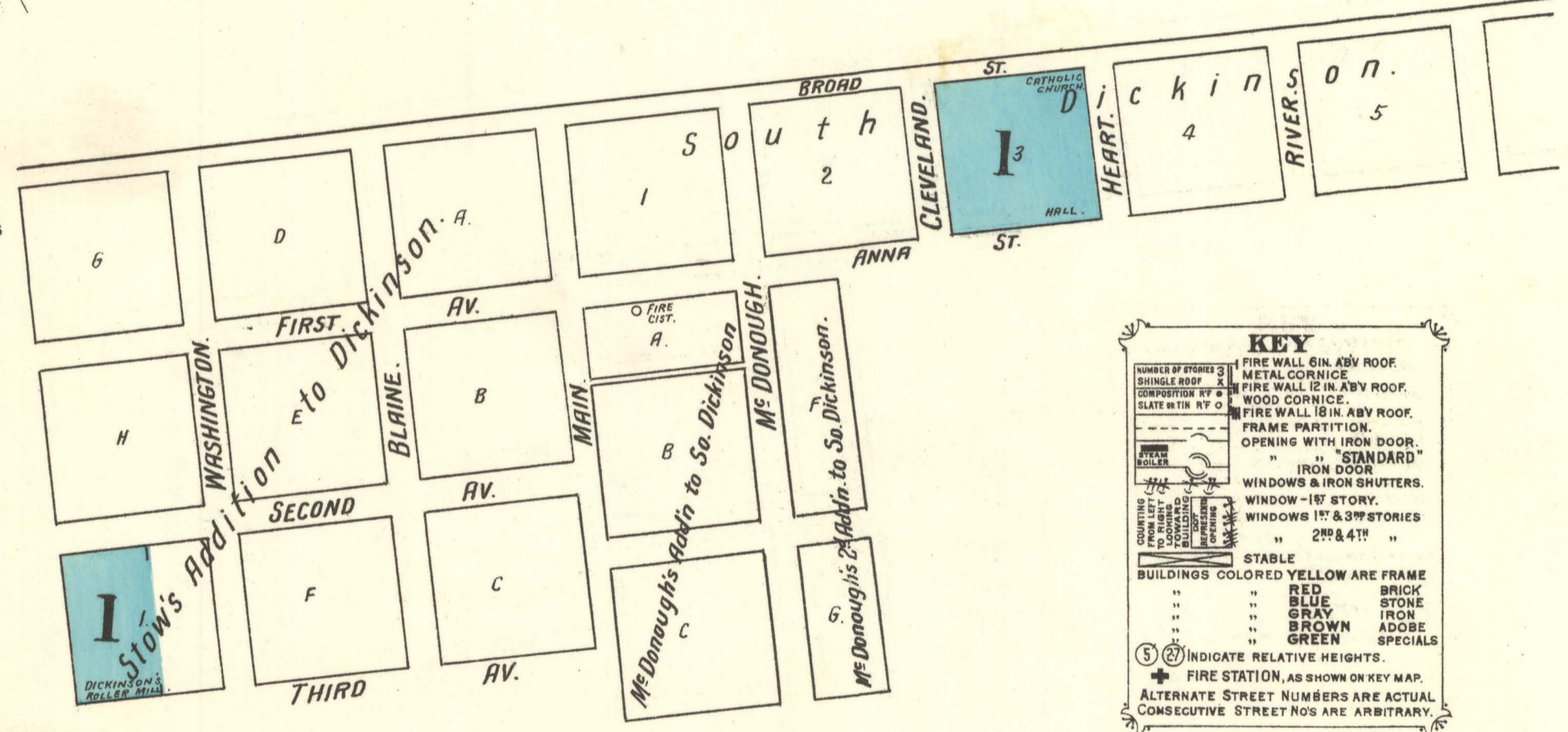
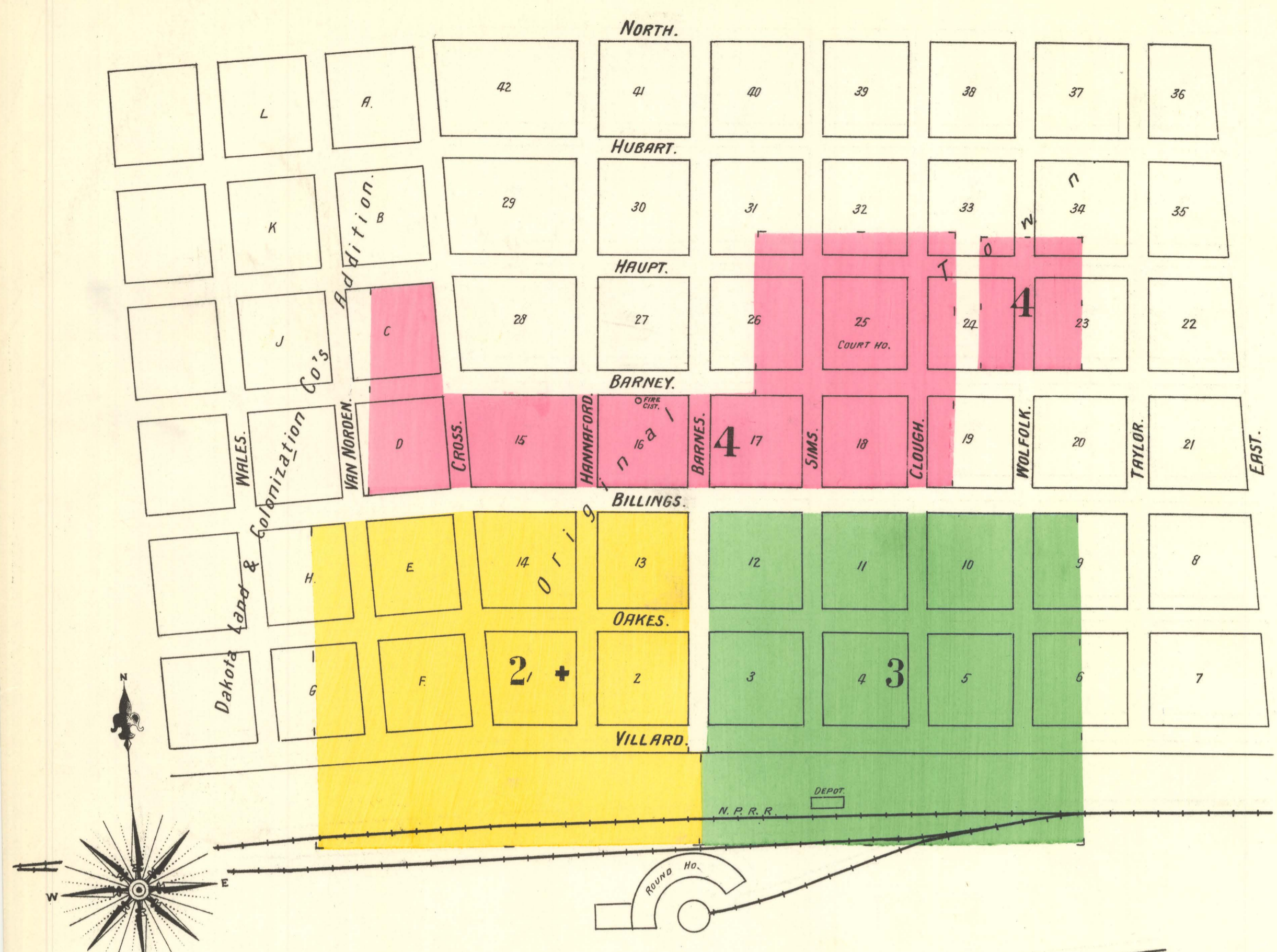
LIBRARY OF CONGRESS Two Copies Received JAN 19 1905

Map Division JAN 25 1905

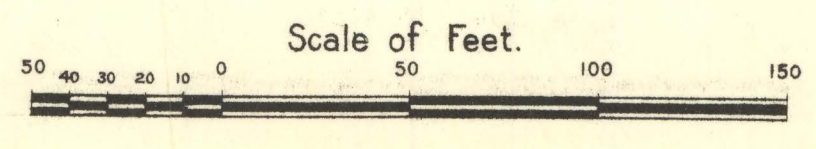
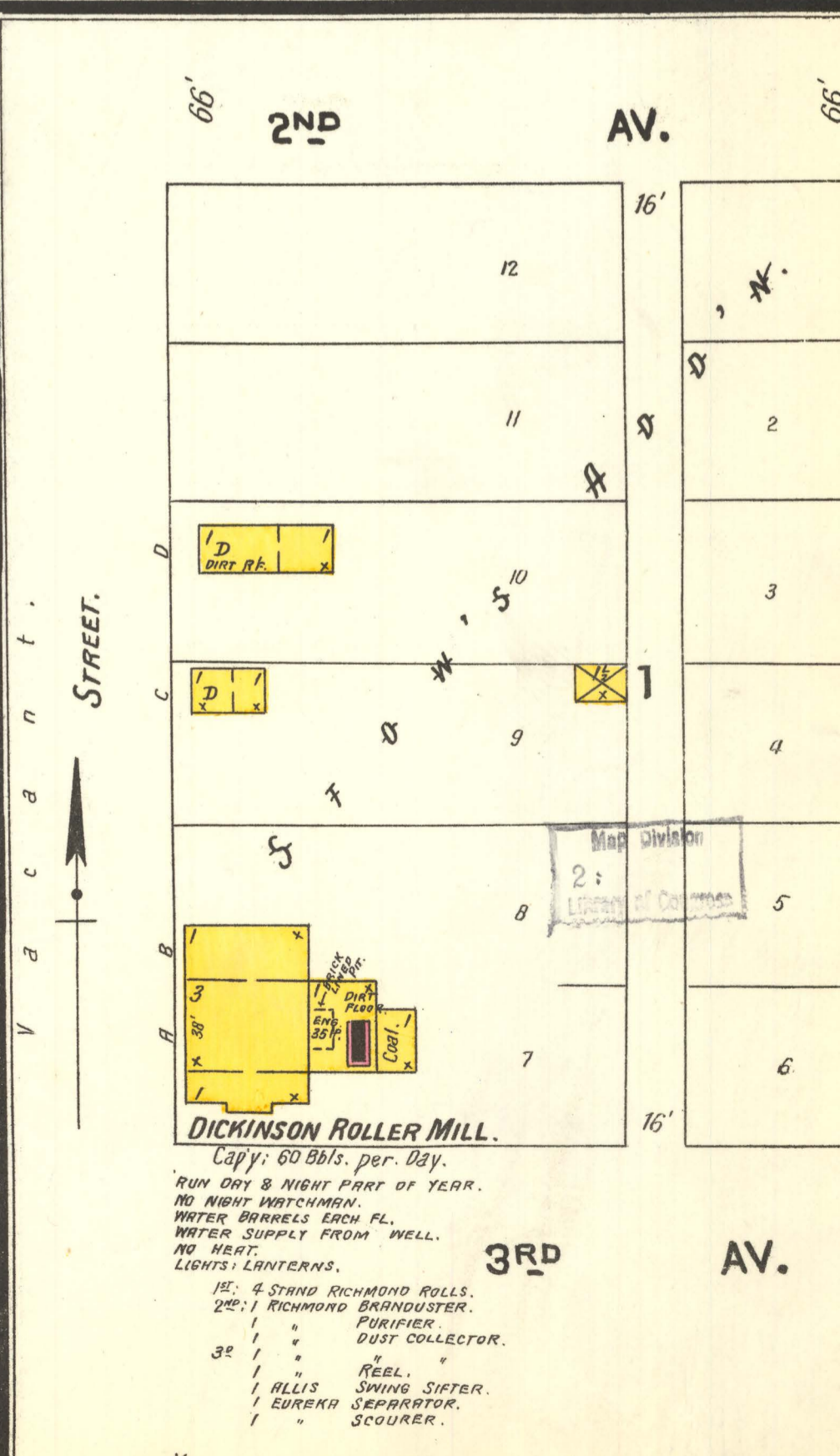
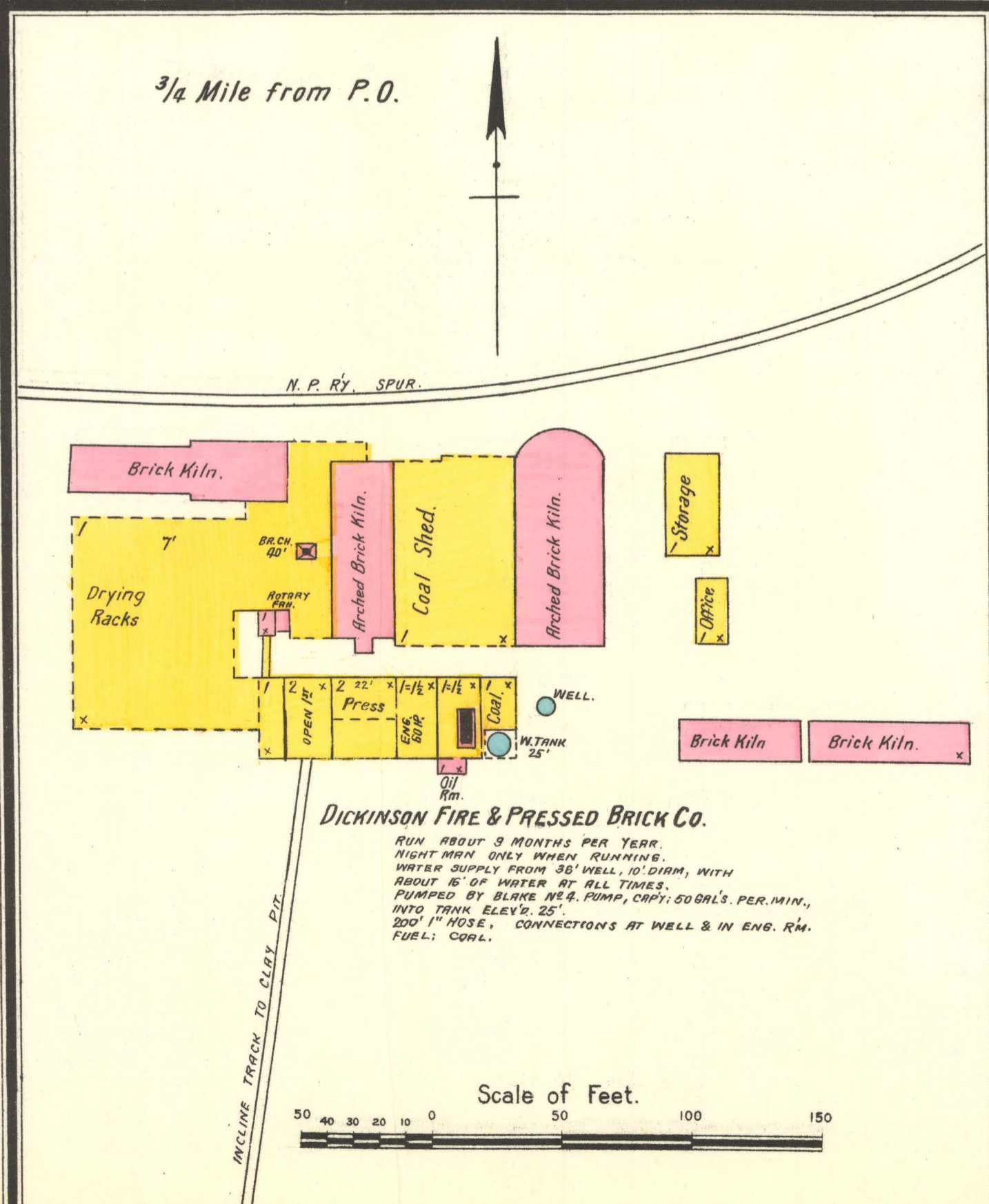
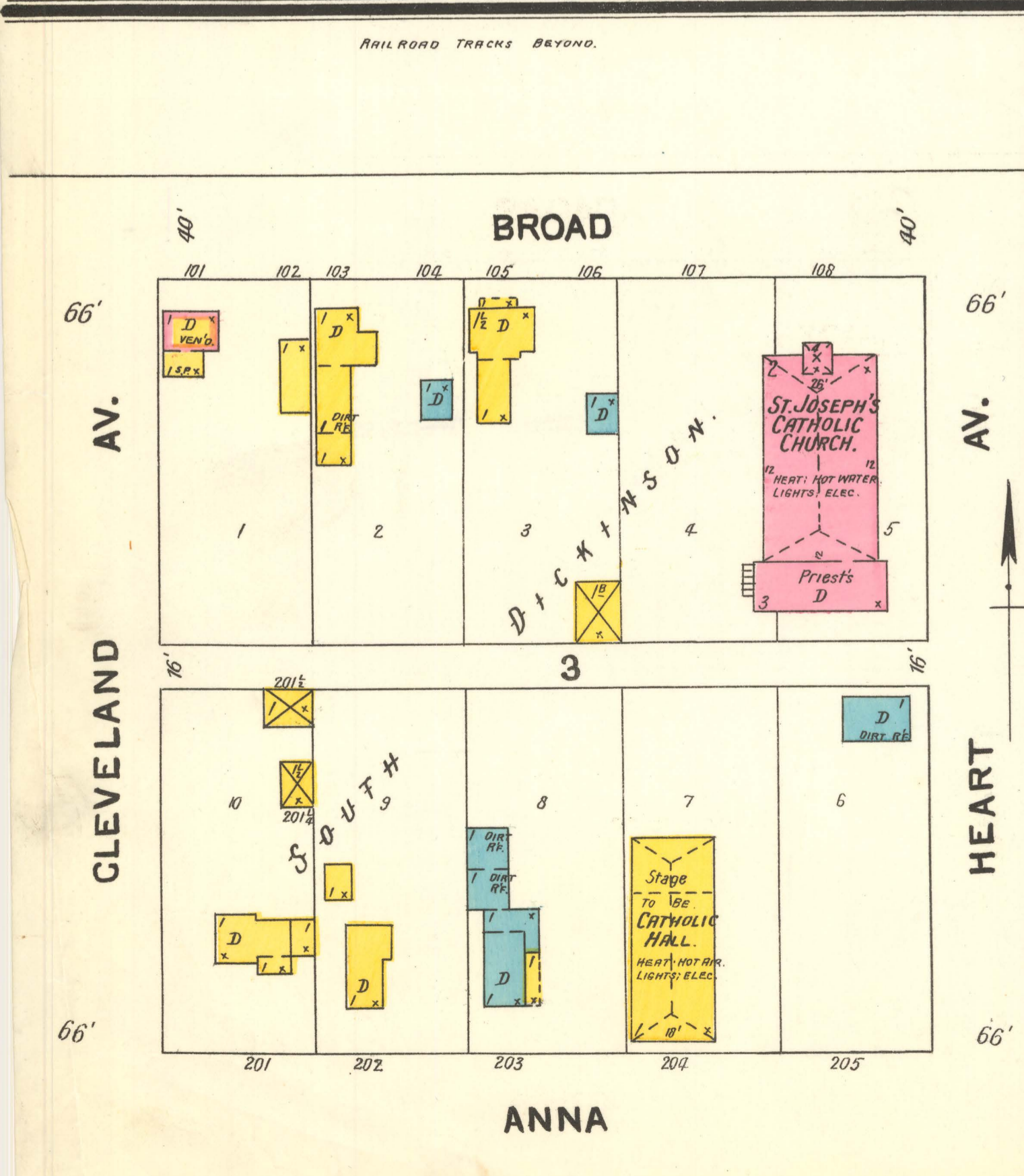
INDEX.

Table with columns: STREETS, SPECIALS, SHEET. Lists streets like Anna, Barnes, Barney, Billings, Broad, Cleveland Ave., Clough, Cross, Hannaford, Haupt, Heart Ave., Oakes, Sims, Van Norden, Villard, Wolfolk and special locations like Blatz, Beer Depot, Catholic Church, City Hall, etc.

NOTE.—House Numbers given are arbitrary.



KEY: FIRE WALL ON ABY ROOF, METAL CORNICE, FIRE WALL IN ABY ROOF, WOOD CORNICE, FIRE WALL IN ABY ROOF, FRAME PARTITION, OPENING WITH IRON DOOR, IRON DOOR, WINDOWS & IRON SHUTTERS, WINDOW—1ST STORY, WINDOWS 1 1/2 & 3RD STORIES, 2ND & 4TH. BUILDINGS COLORED YELLOW ARE FRAME, RED BRICK, BLUE STONE, IRON, BROWN ADDBE, GREEN SPECIALS. (S) INDICATE RELATIVE HEIGHTS. FIRE STATION, AS SHOWN ON KEY MAP. ALTERNATE STREET NUMBERS ARE ACTUAL. CONSECUTIVE STREET NOS ARE ARBITRARY.



DICKINSON ROLLER MILL. RUN DAY & NIGHT PART OF YEAR. NO NIGHT WATCHMAN. WATER BARRELS EACH FL. WATER SUPPLY FROM WELL. NO HEAT. LIGHTS: LANTERNS. 12. 4 STND RICHMOND ROLLS. 22. 1 RICHMOND DRANDUSTER. 1 PURIFIER. 1 DUST COLLECTOR. 32. 1 REEL. 1 ALLIS SWING SIFTER. 1 EUREKA SEPARATOR. 1 SCOURER.