



8-1904

Devils Lake, 1904

Sanborn Map Company

[How does access to this work benefit you? Let us know!](#)

Follow this and additional works at: <https://commons.und.edu/sanborn-maps>

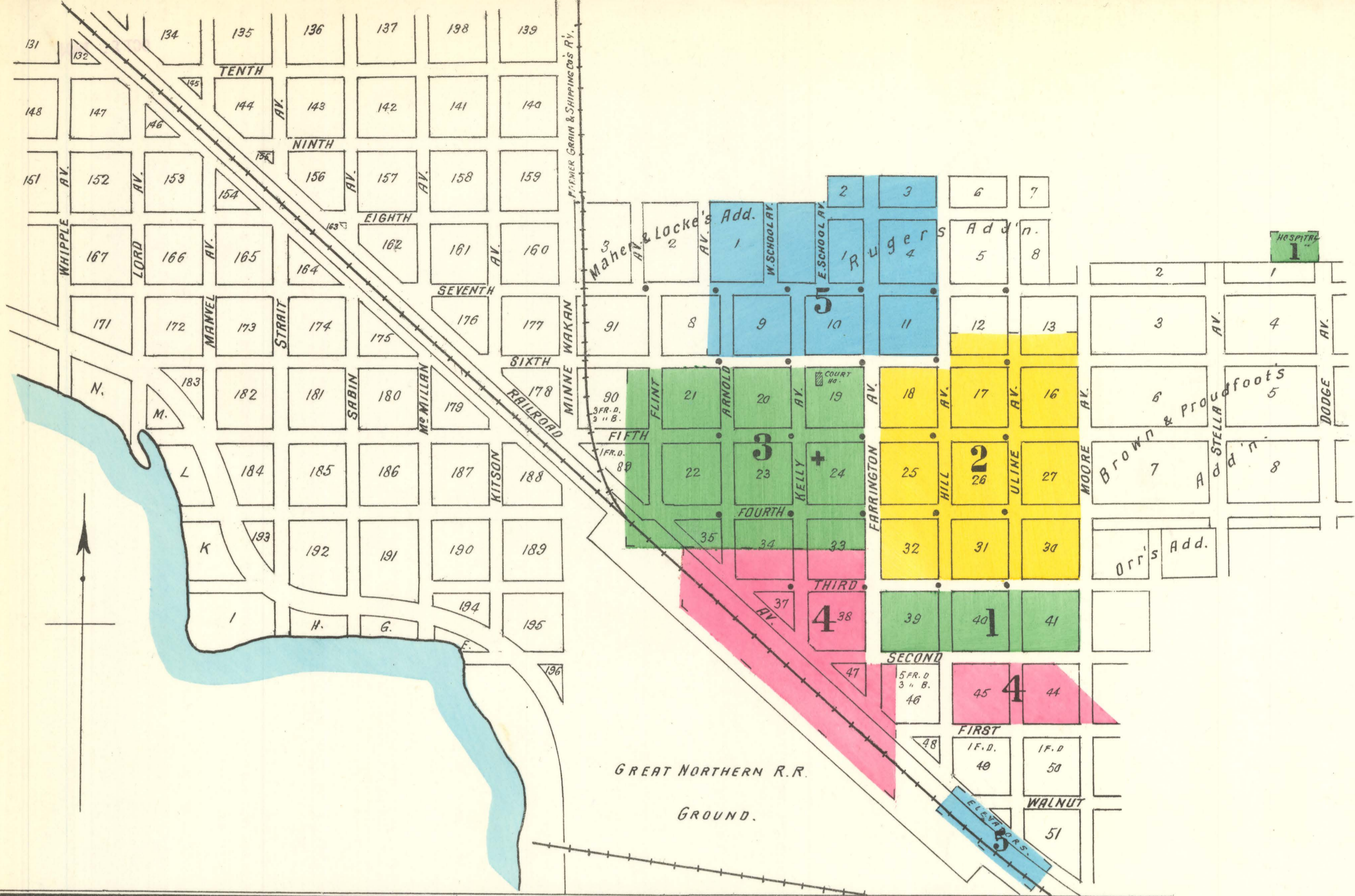
Recommended Citation

Sanborn Map Company, "Devils Lake, 1904" (1904). *Sanborn Maps of North Dakota*. 44.
<https://commons.und.edu/sanborn-maps/44>

This Book is brought to you for free and open access by the Elwyn B. Robinson Department of Special Collections at UND Scholarly Commons. It has been accepted for inclusion in Sanborn Maps of North Dakota by an authorized administrator of UND Scholarly Commons. For more information, please contact und.common@library.und.edu.

NOTE.

STREETS 66' AND 80' WIDE UNPAVED. TOWN LEVEL.
PUBLIC LIGHTS: ELECTRIC.
WATER FACILITIES: DIRECT SYSTEM OF WATER WORKS
SUPPLIED BY A 24" CLOWING ARTESIAN WELL OF
23 LBS. PRESSURE, 126,000 GALLS PER DAY.
ONE WASHINGTON PUMP, 18 1/2" X 12" X 10"
COPY 1, 500,000 GALLS DAILY. IN CASE OF FIRE THIS
PUMP DIRECTLY INTO WATER MAINS GIVING AMPLE
PRESSURE, 5000 GALL. FRAM ON 55' STEEL
TOWER. WATER MAINS Laid in 12" 1901; 14" 1904; 10"
1907 of 6" AND 3 1/2" OF 4" 28 TRIPLE HYD.
5 FIRE CISTERN OF 350 GALL. CAP. 2500.
Fire Dept. VOLUNTEER, 24 MEN. WATERBURY
STEAM FIRE ENG. ONE HOSE CAR AND ONE HOSE
WAGON. 350' 4" AND 500' 2" COTTON HOSE.
ONE H & L TRUCK. FIRE ALARMS: TELE. SYSTEM
AND SIREN WHISTLE AT ELEC. LIGHT PLANT.



KEY

| | | |
|------------------------------------|---------------------------------------|------------------------------------|
| NUMBER OF STORIES | FIRE WALL ON ABY. ROOF | |
| WINDING ROOF | METAL CORNICE | |
| COMPOSITION BY | FIRE WALL IN ABY. ROOF | |
| SLATE IN FT. D. | WOOD CORNICE | |
| FRAME PARTITION | FIRE WALL IN ABY. ROOF | |
| OPENING WITH IRON DOOR | FRAME PARTITION | |
| STANDARD | IRON DOOR | |
| WINDOWS & IRON SHUTTERS | WINDOWS 1' & 3 1/2' STORIES | |
| WINDOW 15' STORY | " 2' & 4' " | |
| STABLE | INDICATE RELATIVE HEIGHTS | |
| BUILDINGS COLORED YELLOW ARE FRAME | + | FIRE STATION, AS SHOWN ON KEY MAP. |
| BRICK | ALTERNATE STREET NUMBERS ARE ACTUAL. | |
| RED | CONSECUTIVE STREET NOS ARE ARBITRARY. | |
| BLUE | | |
| IRON | | |
| BROWN | | |
| ADOBE | | |
| SPECIALS | | |

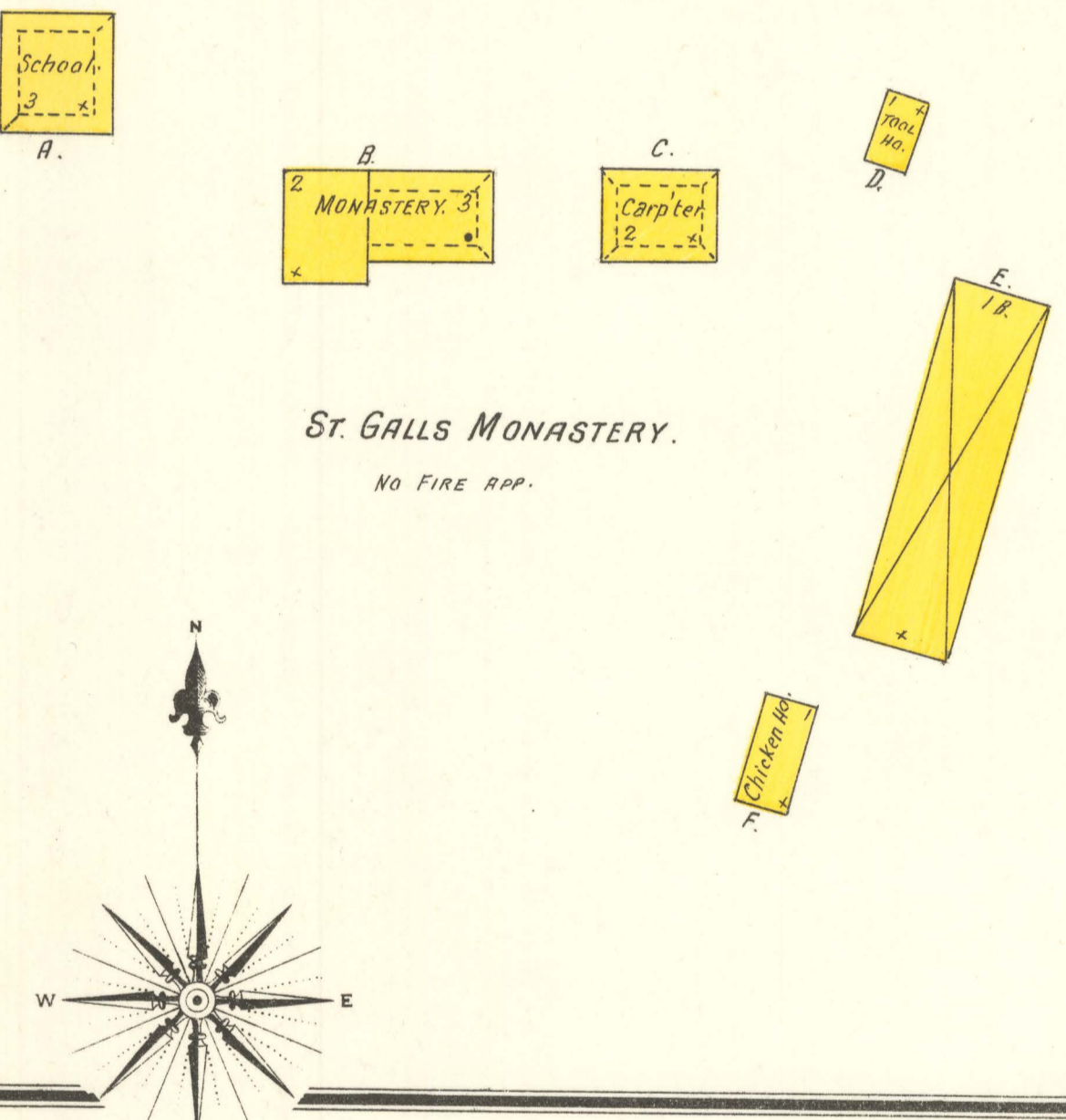
LIBRARY OF CONGRESS
This Catalogue Shows
OCT 24 1904
CLASS. No. 6480

Map Division
NOV 10 1904
Library of Congress

INDEX.

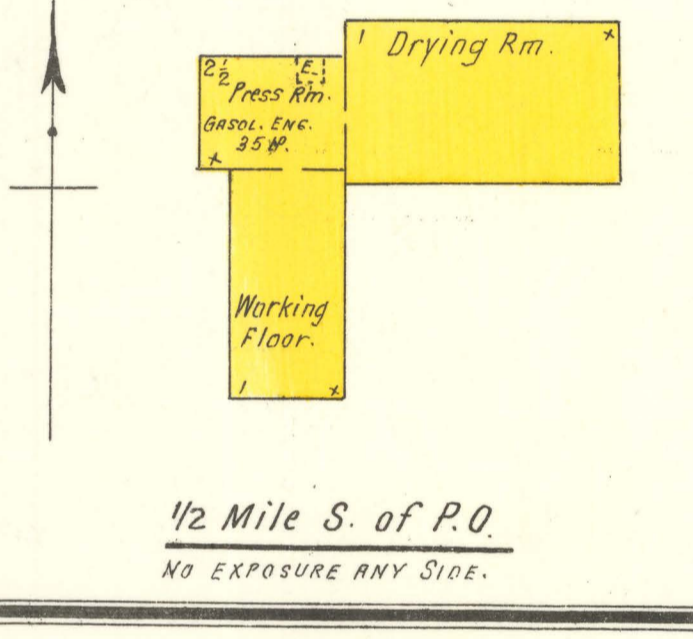
| STREETS. | SHEDS | S | SHEDS | G | |
|--------------|-----------|------------------|-------------------|---|---|
| Arnold Ave., | 102-123 3 | School Ave., E., | 5 | Gorder & Son, Machine Shop, | 4 |
| " " " | 201-202 4 | " " W., | 4 | G. N. R. R. Depots, | 4 |
| " " " | 801-809 5 | Second, | 15-119 4 | | |
| | | " " " | 501-526 1 | | |
| | | Seventh, | 15-30 3 | Hinck's Hotel, | 4 |
| | | " " " | 201-229 5 | Hotel Sevilla, | 3 |
| | | " " " | 301-352 2 | | |
| | | Third, | 15-33 4 | Mercy Hospital, | 1 |
| | | " " " | 401-435 2 | Methodist Episcopal Church, | 2 |
| | | " " " | 501-525 1 | Miller & Baker, Elev., Feed & Saw Mill, | 3 |
| | | " " " | | Minneapolis & Northern Elevator Co., | 3 |
| | | Uline Ave., | 827-852 2 | | |
| | | " " " | First to Second 4 | National Elevator Co., | 5 |
| | | " " " | Second to Third 1 | North Dakota Deaf and Dumb School, | 4 |
| | | | | Norwegian Lutheran Church, | 2 |
| | | | | | |
| | | | | Opera House, | 5 |
| | | | | | |
| | | | | Presbyterian Church, | 2 |
| | | | | Public School, | 5 |
| | | | | | |
| | | | | Reid's Hotel, | 4 |
| | | | | Robertson's Lumber Yard, | 3 |
| | | | | Routiers Hotel, | 3 |
| | | | | | |
| | | | | St. Anthony & Dakota Elevator Co., | 5 |
| | | | | " " Galls Monastery, | 1 |
| | | | | " " Scandinavian Hotel, | 4 |
| | | | | " " Stoltze, F. H., Lumber, | 4 |
| | | | | | |
| | | | | Winter & Ames, Elevator, | 5 |

2 Miles S.E. of P.O.



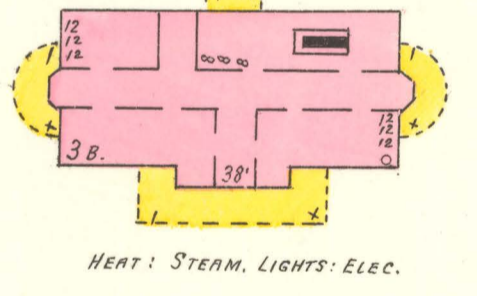
St. Galls Monastery.
NO FIRE APP.

DEVILS LAKE PETRIFIED BRICK & STONE CO.
Operated only in Summer time.
WATER FROM DEVILS LAKE WATER WORKS BY
2 1/2" PIPE. 150' 1 1/4" HOSE.



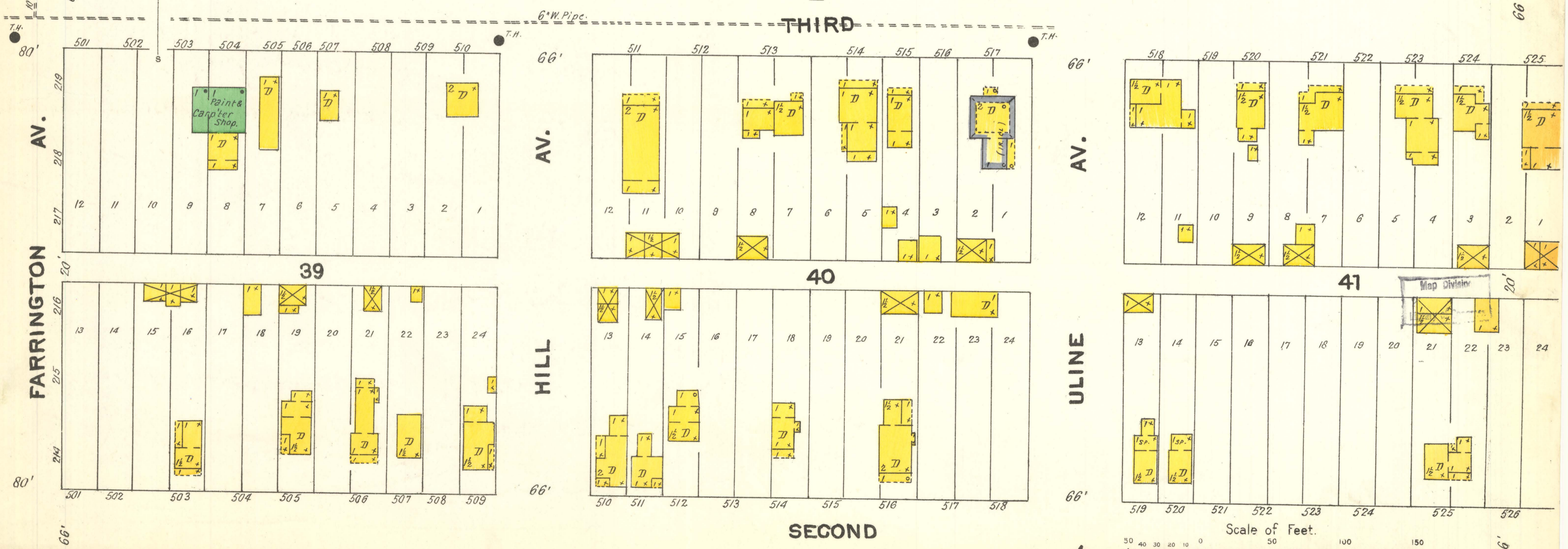
1/2 Mile S. of P.O.
NO EXPOSURE ANY SIDE.

MERCY HOSPITAL.



HEAT: STEAM. LIGHTS: ELEC.

2



Scale of Feet.