



12-1898

## Devils Lake, 1898

Sanborn Map Company

[How does access to this work benefit you? Let us know!](#)

Follow this and additional works at: <https://commons.und.edu/sanborn-maps>

---

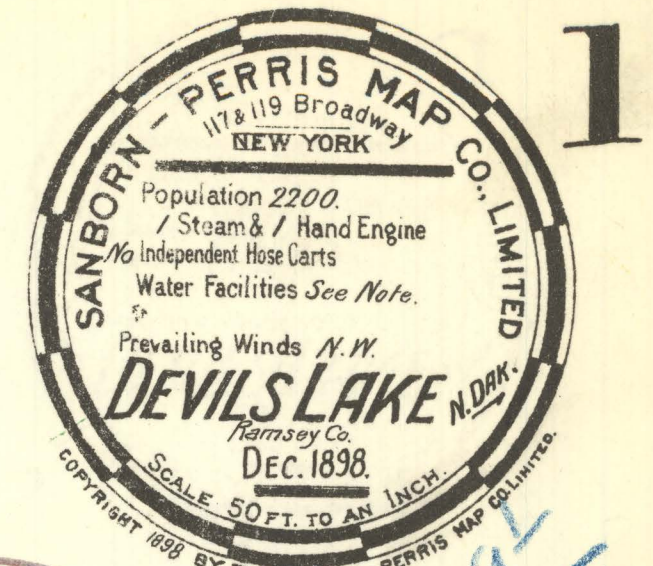
### Recommended Citation

Sanborn Map Company, "Devils Lake, 1898" (1898). *Sanborn Maps of North Dakota*. 45.  
<https://commons.und.edu/sanborn-maps/45>

This Book is brought to you for free and open access by the Elwyn B. Robinson Department of Special Collections at UND Scholarly Commons. It has been accepted for inclusion in Sanborn Maps of North Dakota by an authorized administrator of UND Scholarly Commons. For more information, please contact [und.common@library.und.edu](mailto:und.common@library.und.edu).



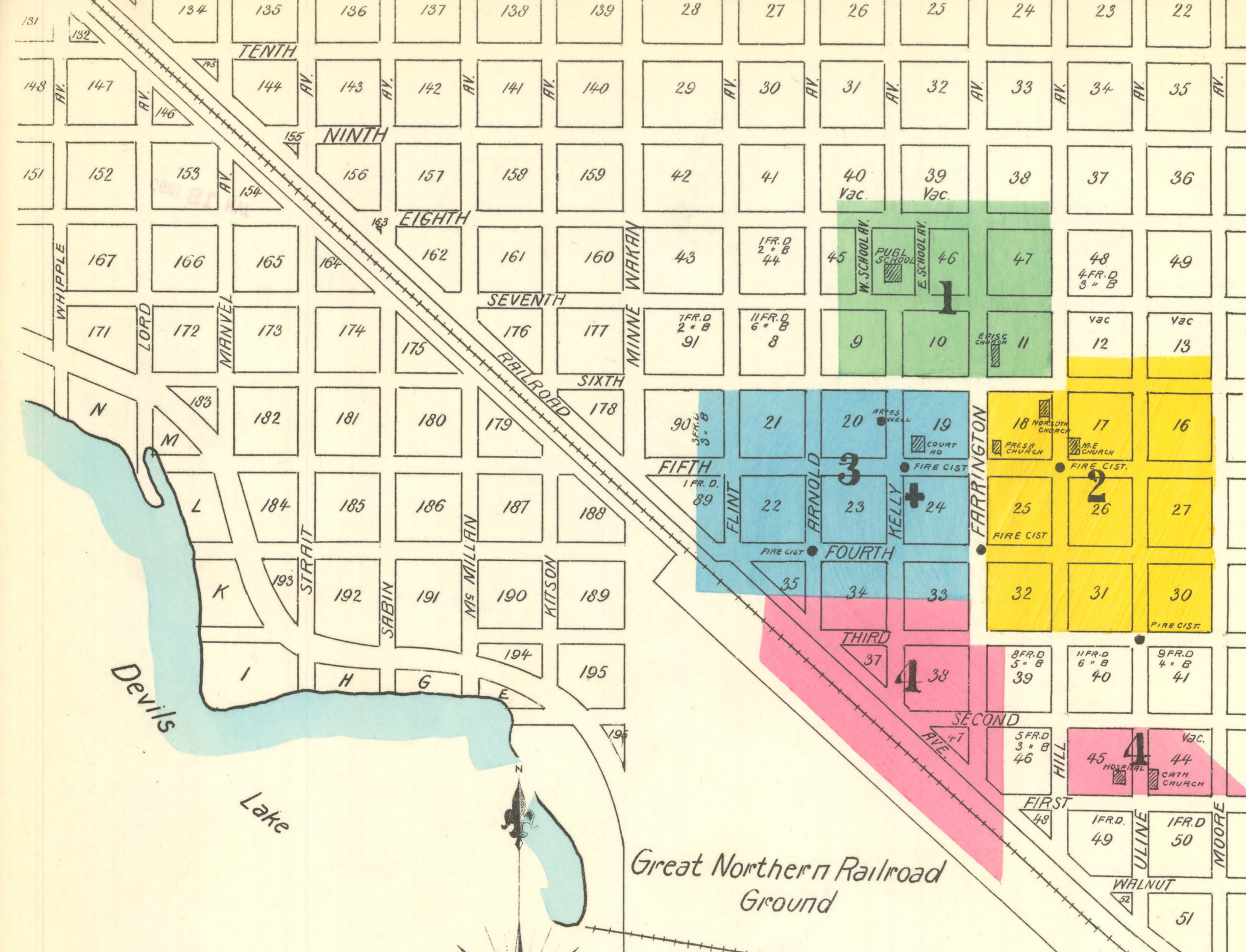
**Note.**  
Water Fac. Overflowing Artesian Well. 5 Fire Cists, 3 of which are 350 & 2 are 250 Gall. Cists are filled from Artesian Well. 1 Dble. Fire Plug with Steamer Att. by Fire Eng. No. Connects with Artesian Well.  
Fire Dept. - Vol. 30 Members 1 Waterless Spr. Fire Eng. 1 Hand Eng. 1 H & L. Truck. 2 Hose Carts & 2000' 2 1/2" Hose.



Note - The numbering of this map corresponds with the numbers of the latest rate book, Sept. 1898. Buildings not numbered have no rate book number or old map number.

TWO COPIES RECEIVED.  
JAN 12 1899  
FEB 11 1899  
Office of Maps

1899  
5368



**KEY**

AK OF STORIES	FIRE WALL GIN. AB. ROOF
COMBUSTIBLE ROOF	- - - 12 - - -
STEAM BUILDING	- - - 18 - - -
FRAME PARTITION	- - - 18 - - -
OPENING & IRON DOOR	WINDOWS - - - SHUTTERS
STABLE	- - - 17' & 8" - - -
WINDOW IN 1ST STORY	- - - 2' 8" & 4" - - -
INDICATE RELATIVE HEIGHTS	ALTERNATE STREET NOS ARE ACTUAL
CONSECUTIVE - - - ARBITRARY	JOKEN LINE NEAR BLDG - WOOD CORNER
SOLID - - - METAL	

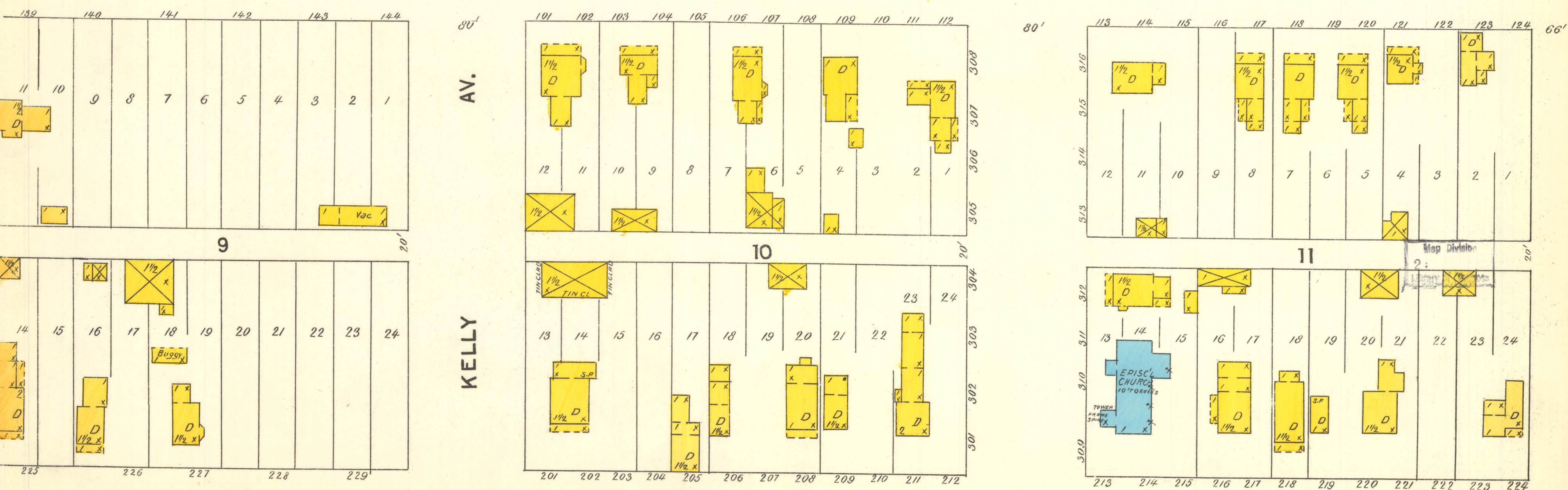
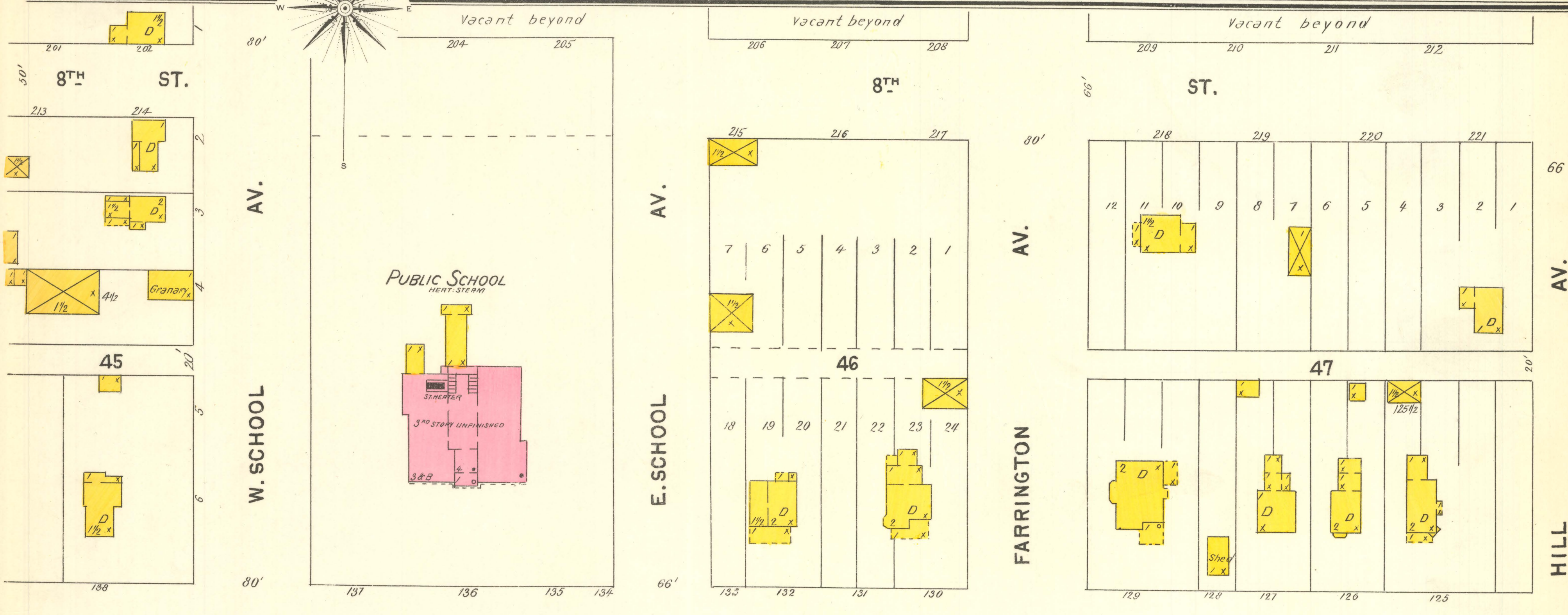
**INDEX**

STREETS.	NUMBER	DESCRIPTION
Arnold Ave.	3 & 4	
Eighth	1	
Farrington Ave.	101-112	
Fifth	401-435	
First	501-572	
Fourth	601-659	
Hill Ave.	First to Second	
Kelly Ave.	201-241	
Railroad Ave.	101-100	
School Ave.	15-119	
Seventh	15-30	
Sixth	301-352	
Third	15-33	
Uline Ave.	697-852	
W. School	1st to 5th	
E. School	1st to 5th	

**SPECIALS.**

Catholic Church	4
Cleveland, A. D., Lumber	4
County Court House	4
Devils Lake Electric Light Plant	3
Episcopal Church	1
G. N. R. R. Depot	4
Hanson, A. P., Roller Mills	4
Hotel Sevilla	3
John Hale Hotel	4
La Rue Miller Co.'s Elevator	3
Methodist Episcopal Church	2
Minnesota & Northern Elev. Co.	4
National Elevator Co.	4
Norsk Hotel	4
North Dakota Deaf & Dumb School	4
Norwegian Lutheran Church	2
Presbyterian Church	2
Prosser & Baumgard, Lumber, & Co.	4
Public School	1
St. Anthony & Dakota Elevator Co.	4
Vincent de Paul Cath. Hospital	4
Wolter, F. H., Lumber	4

NOTE.—House Numbers given are arbitrary.



Scale of Feet. 0 50 100 150