



11-1891

Devils Lake, 1891

Sanborn Map Company

[How does access to this work benefit you? Let us know!](#)

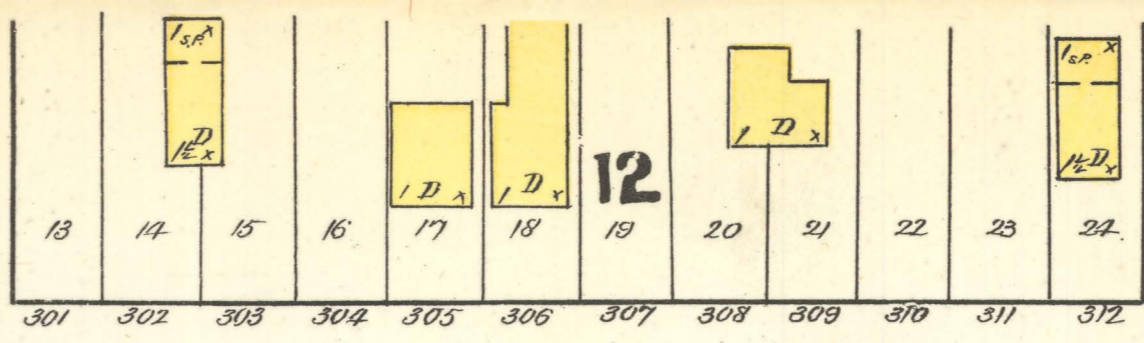
Follow this and additional works at: <https://commons.und.edu/sanborn-maps>

Recommended Citation

Sanborn Map Company, "Devils Lake, 1891" (1891). *Sanborn Maps of North Dakota*. 46.
<https://commons.und.edu/sanborn-maps/46>

This Book is brought to you for free and open access by the Elwyn B. Robinson Department of Special Collections at UND Scholarly Commons. It has been accepted for inclusion in Sanborn Maps of North Dakota by an authorized administrator of UND Scholarly Commons. For more information, please contact und.common@library.und.edu.

SEE SHEET No. 3.



LIBRARY OF CONGRESS
COPYRIGHT
JAN 2 1892
47964 W

KEY

- FIRE WALL 6 IN. AB. ROOF
- 12"
- 18"
- FRAME PARTITION
- OPENING & IRON DOOR
- WINDOWS - SHUTTERS
- STABLE
- WINDOW IN 1ST STORY
- 11' & 3 3/4"
- 2 1/2' & 4 1/4"

B'LDGS COLORED YELLOW ARE FRAME
RED " BRICK
BLUE " STONE
GREY " IRON
BROWN " ADobe
GREEN " SPECIALS

MARKED (C) ARE CLOTH LINED
(S) INDICATE RELATIVE HEIGHTS
ALTERNATE STREET NOS ARE ACTUAL
CONSECUTIVE " " ARBITRARY
BROKEN LINE NEAR B'LDG - WOOD CORNICHE
SOLID " " METAL

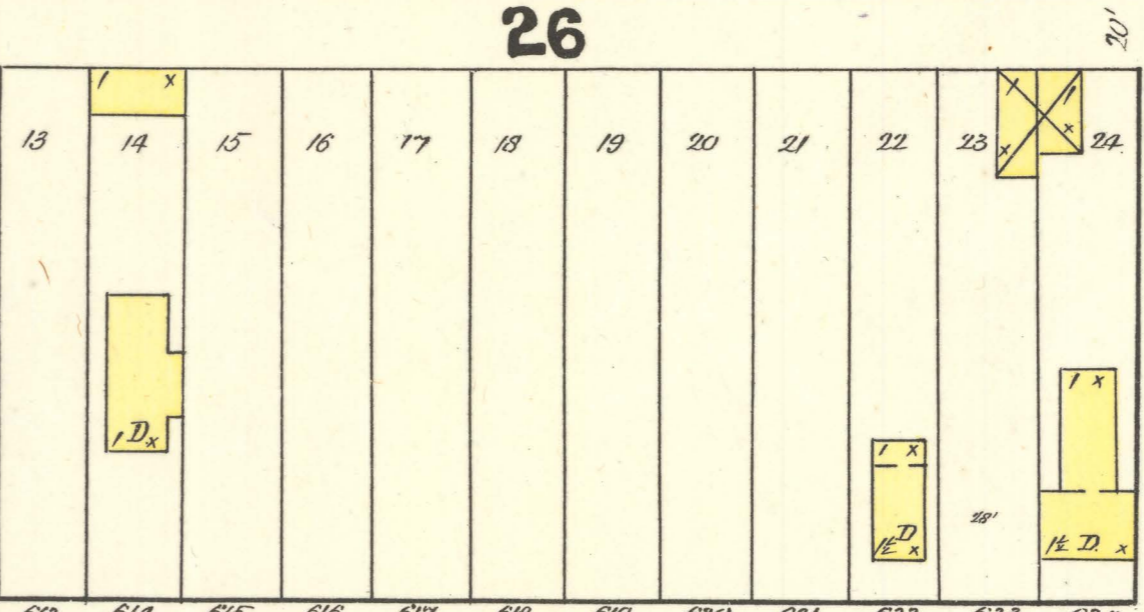
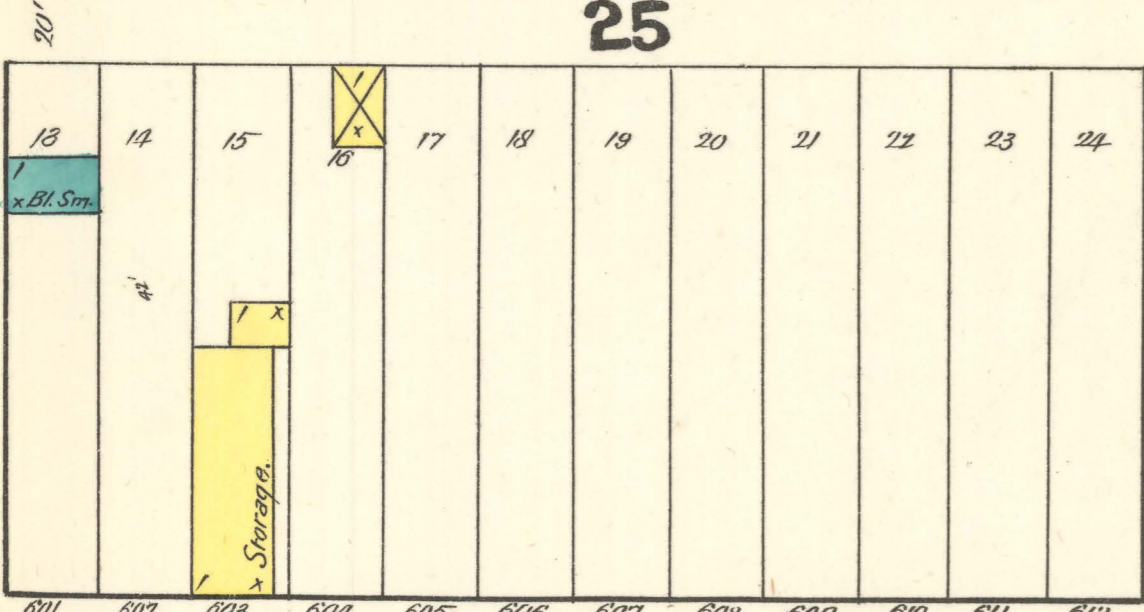
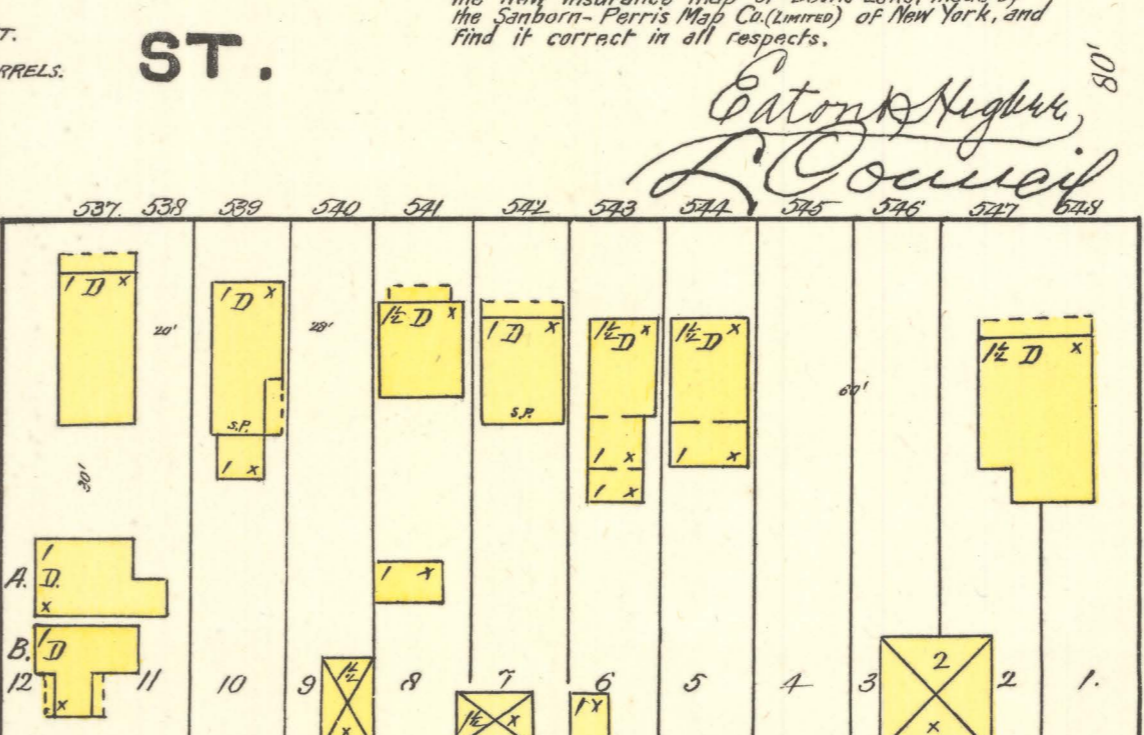
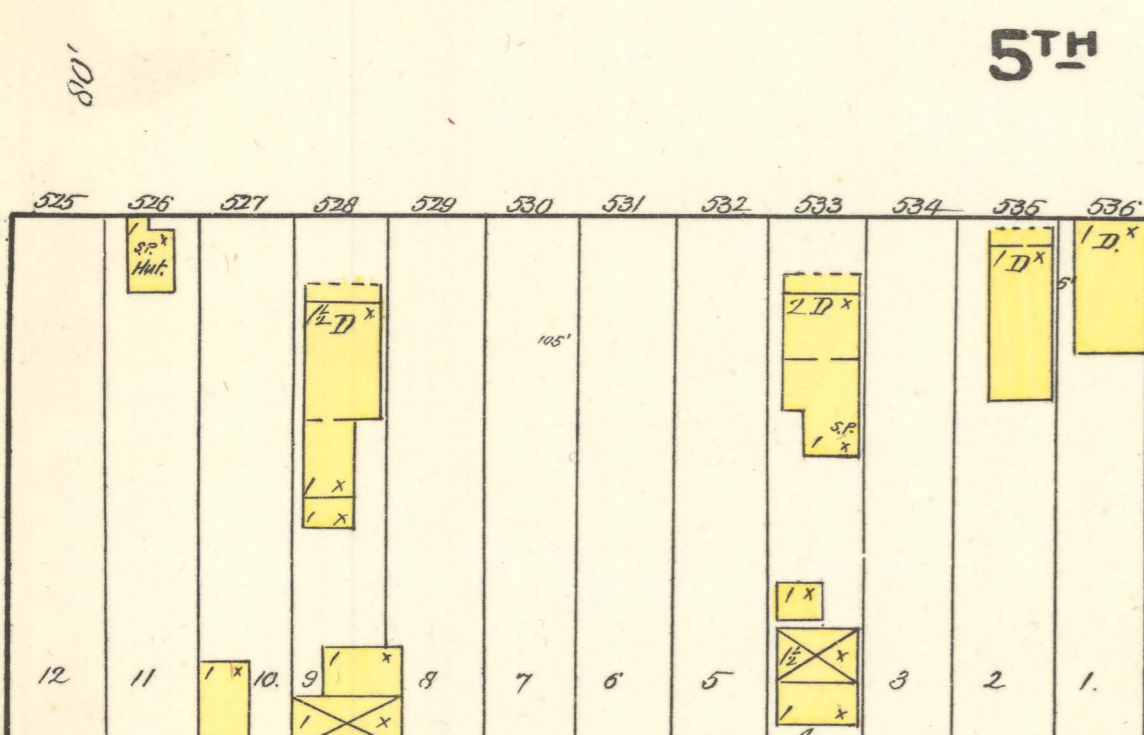
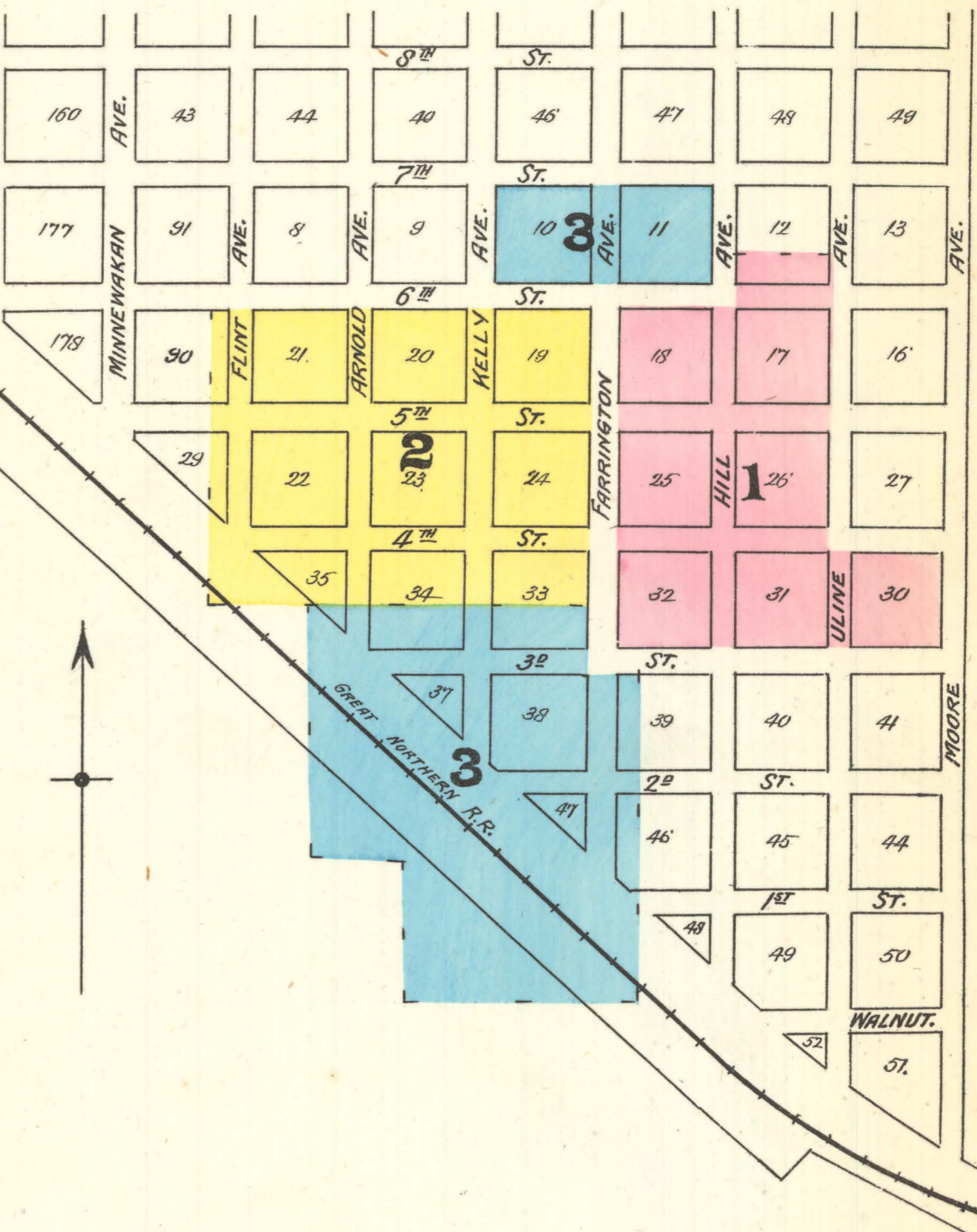
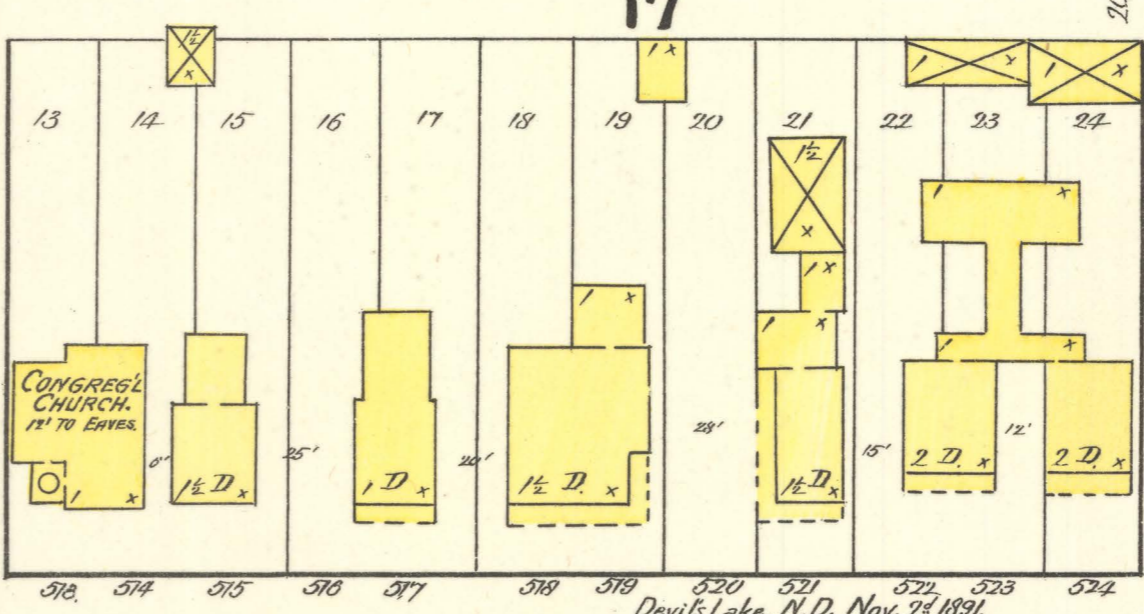
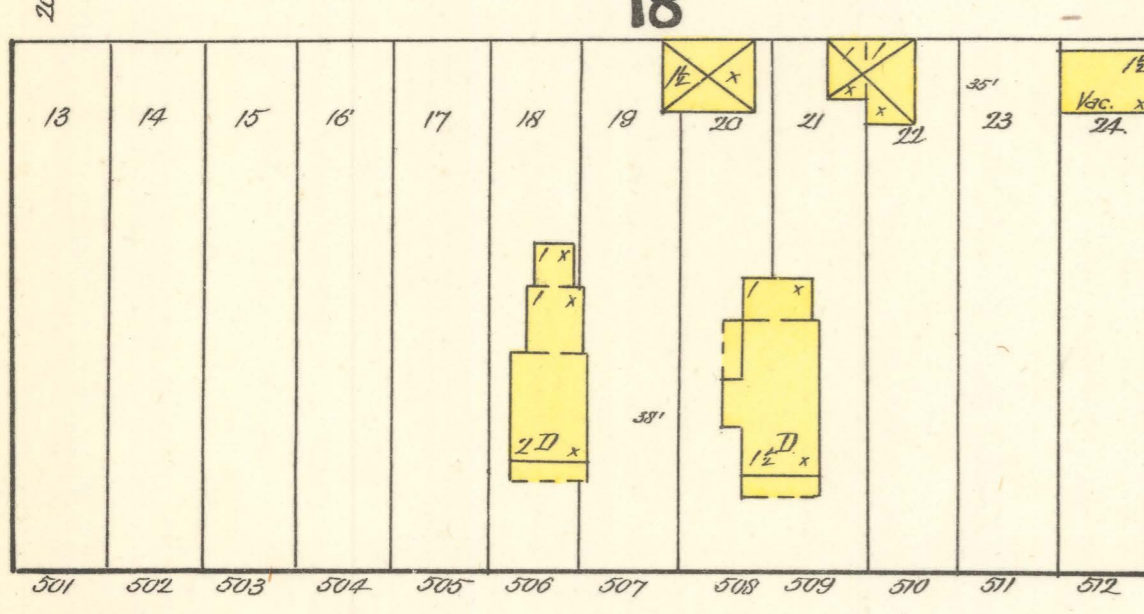
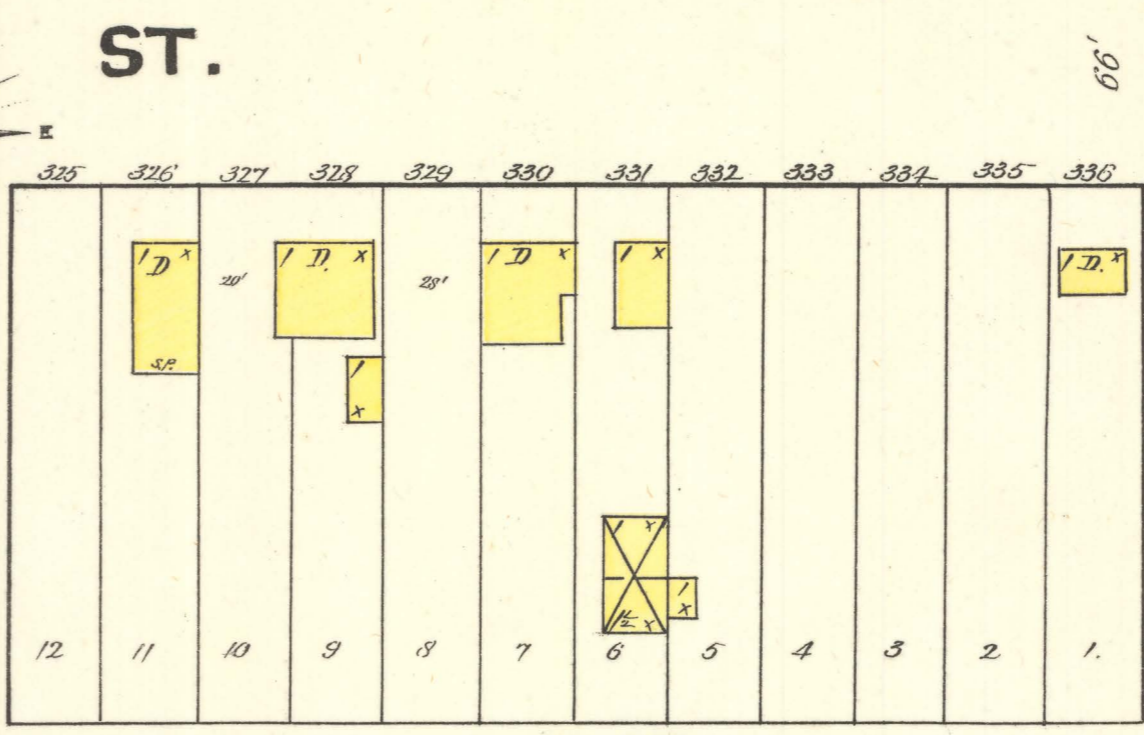
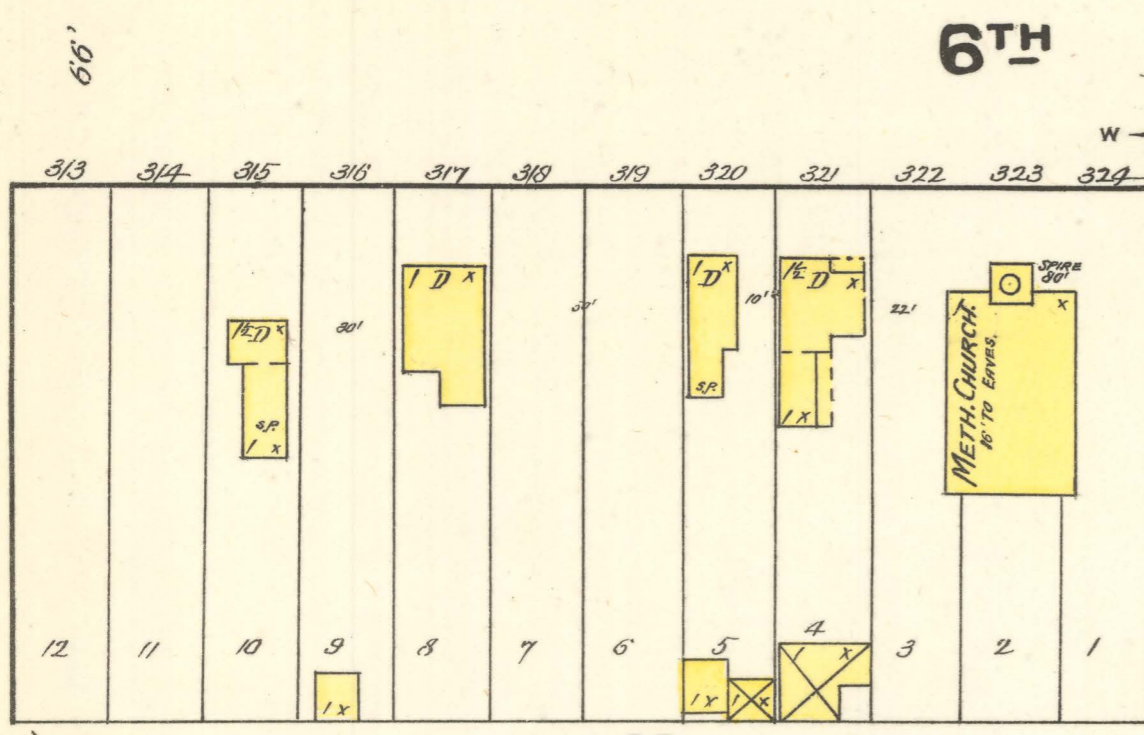
SANBORN - PERRIS MAP CO. LIMITED
172 & 119 Broadway
NEW YORK

Population 1200.
16 Steam & 1 Hand Engine
No Independent Hose Carts
Water Facilities - Not Good.
2000' 32' Hgt. 6 Lines Fire Cist. 4

Prevaling Winds
Nov. 1891.

SCALE 50 FT. TO AN INCH.

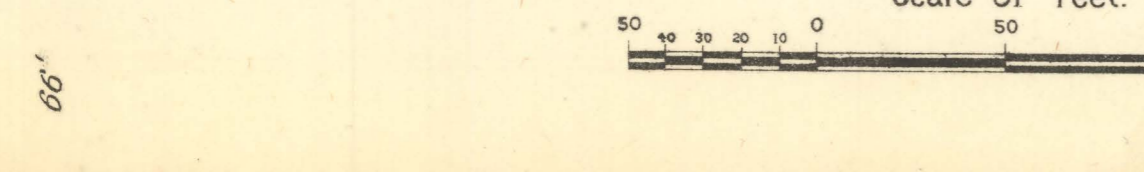
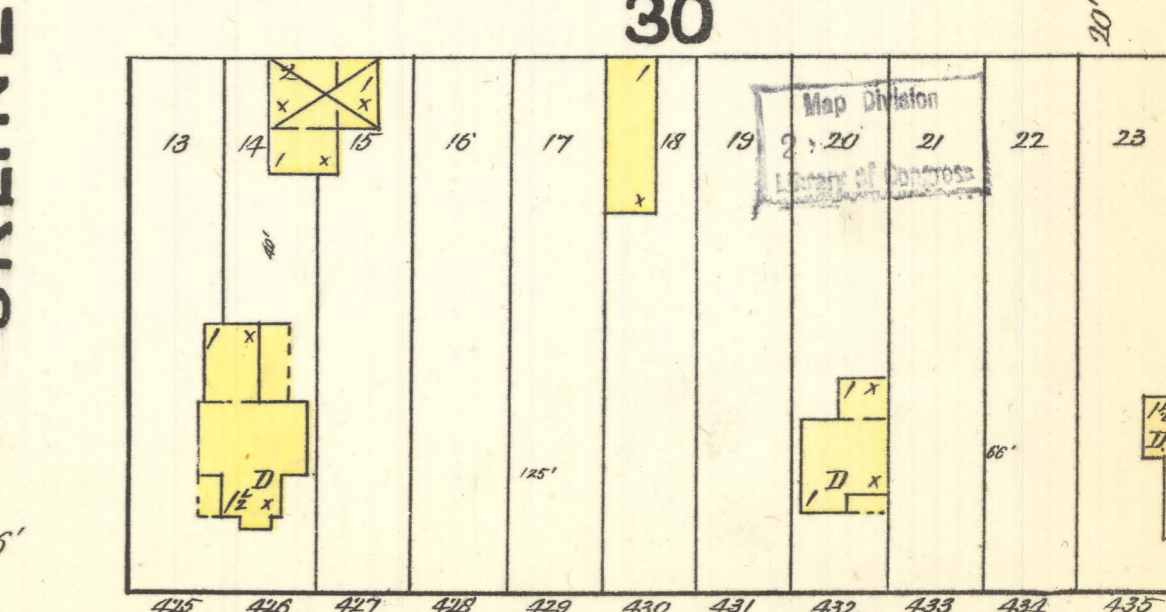
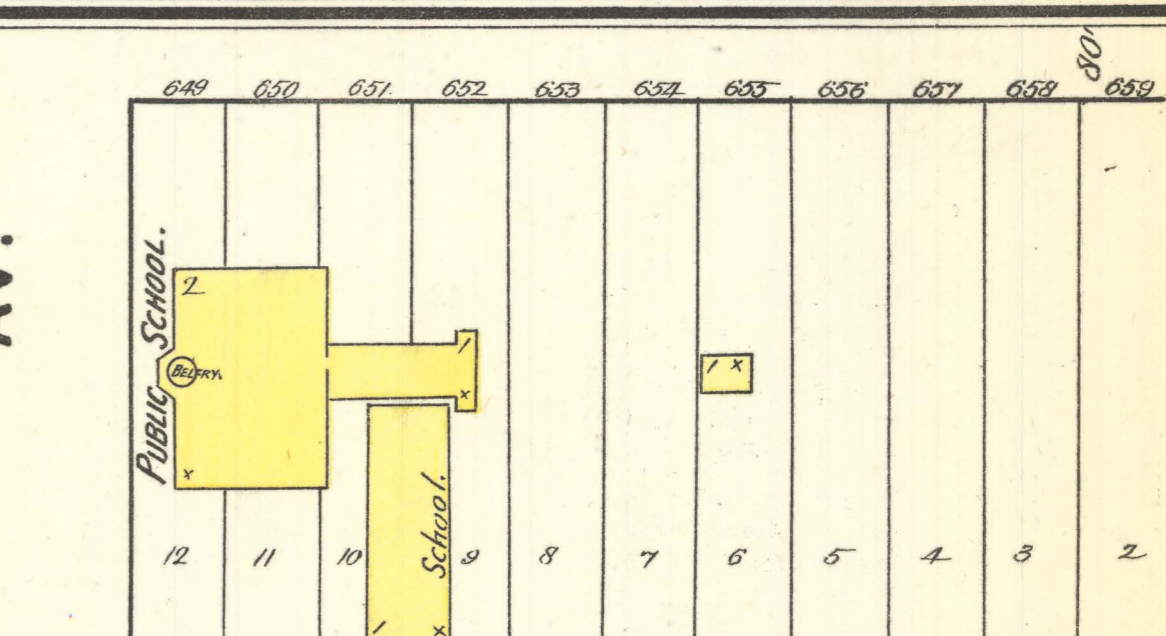
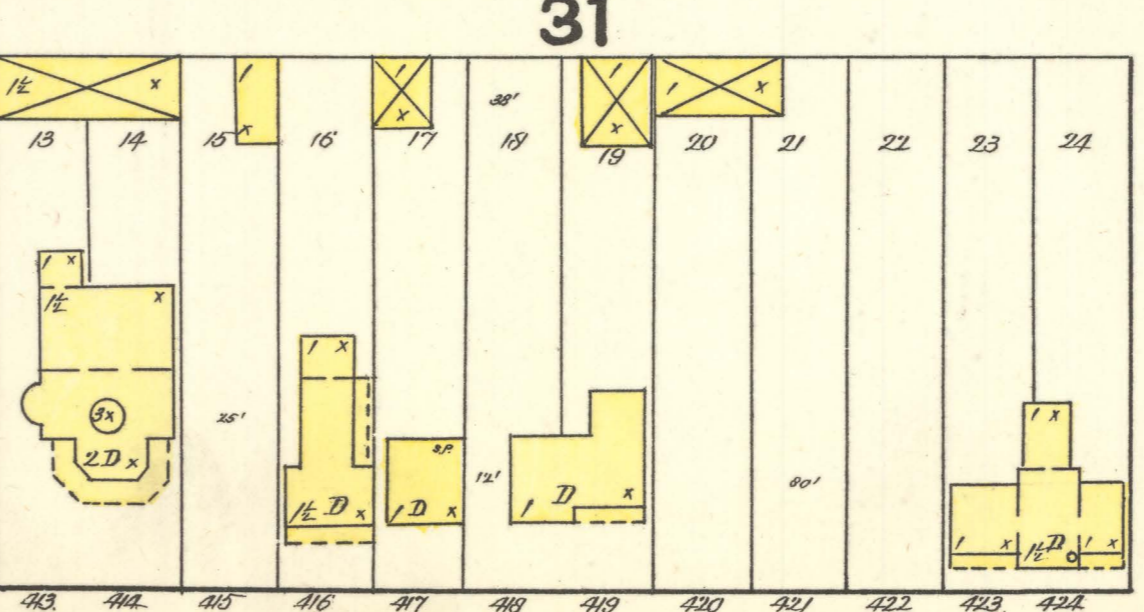
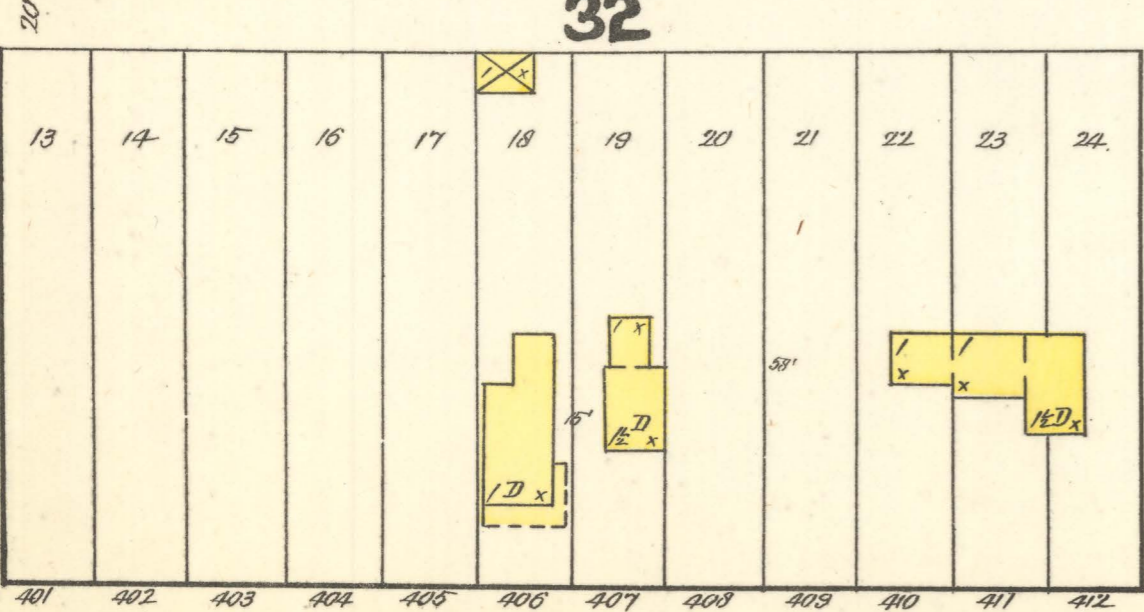
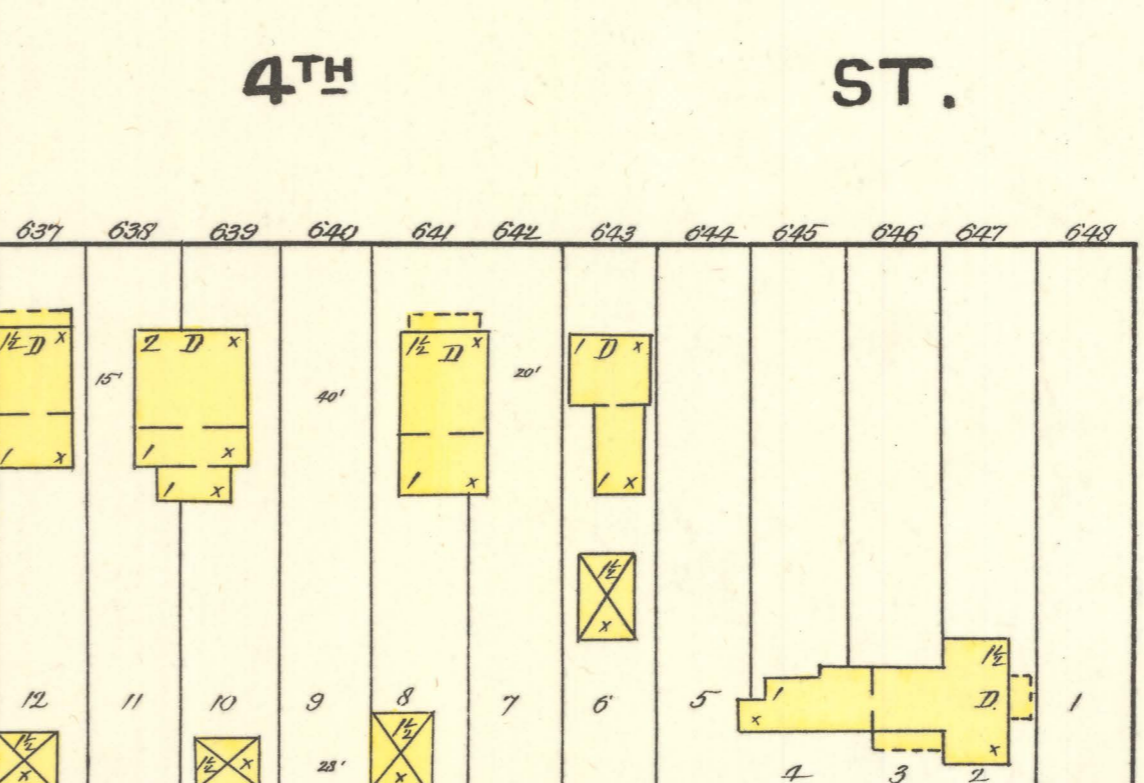
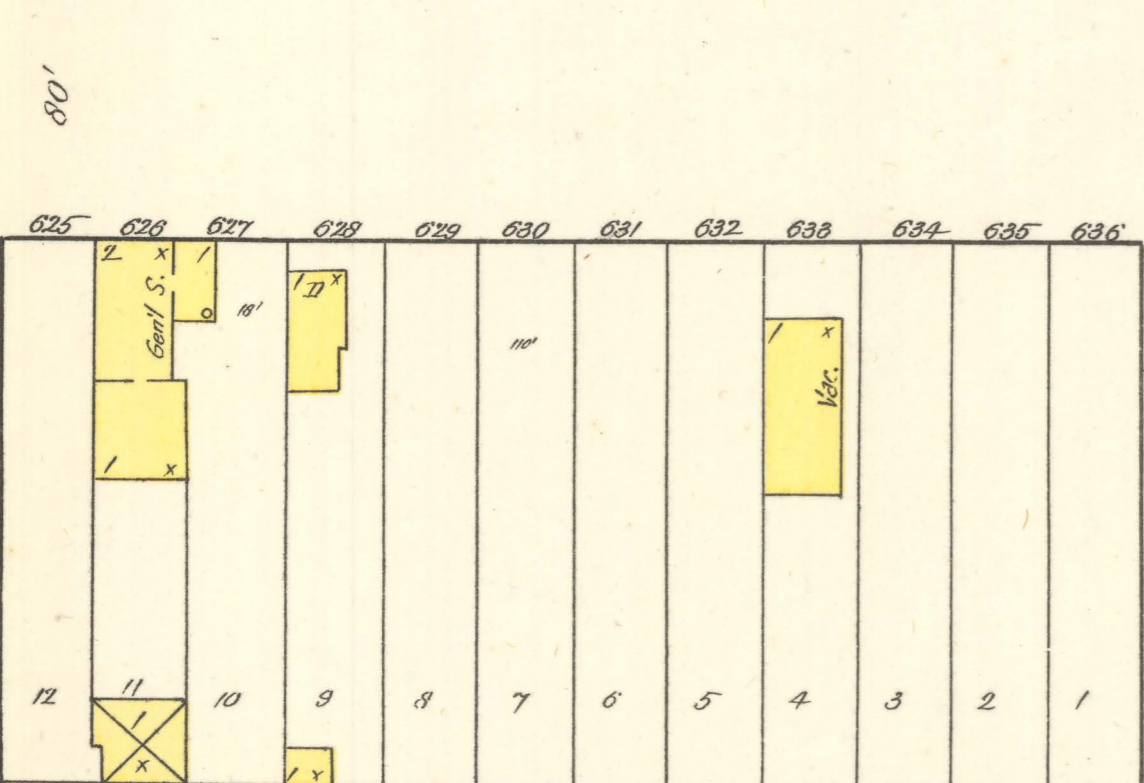
COPYRIGHT 1891 BY THE SANBORN - PERRIS MAP CO. LIMITED



INDEX.

SPECIALS.

Sheet	Special	Page
B	Benham Hotel	2
C	Cairn's Hotel	3
C	Commercial Hotel	1
C	Congregational Church	2
C	County Court House	2
D	Devil's Lake Mill Co.	2
E	Episcopal Church	3
G	G. N. R. R. Depot	3
M	Methodist Church	1
M	Minneapolis & Northern Elevator Co.	3
P	Presbyterian Church	3
P	Public School	1
R	Red River Valley Elevator Co.	3
T	Tower House	2



SEE SHEET No. 2.

SEE SHEET No. 3.

The undersigned Ins. Agents have examined the new insurance map of Devil's Lake, made by the Sanborn-Perris Map Co. (Lima) of New York, and find it correct in all respects.

*Edwin Hughes,
L. Council*

(4825)
3 SHEETS.
1

NOV 1891