



9-1886

## Devils Lake, 1886

Sanborn Map Company

[How does access to this work benefit you? Let us know!](#)

Follow this and additional works at: <https://commons.und.edu/sanborn-maps>

---

### Recommended Citation

Sanborn Map Company, "Devils Lake, 1886" (1886). *Sanborn Maps of North Dakota*. 47.  
<https://commons.und.edu/sanborn-maps/47>

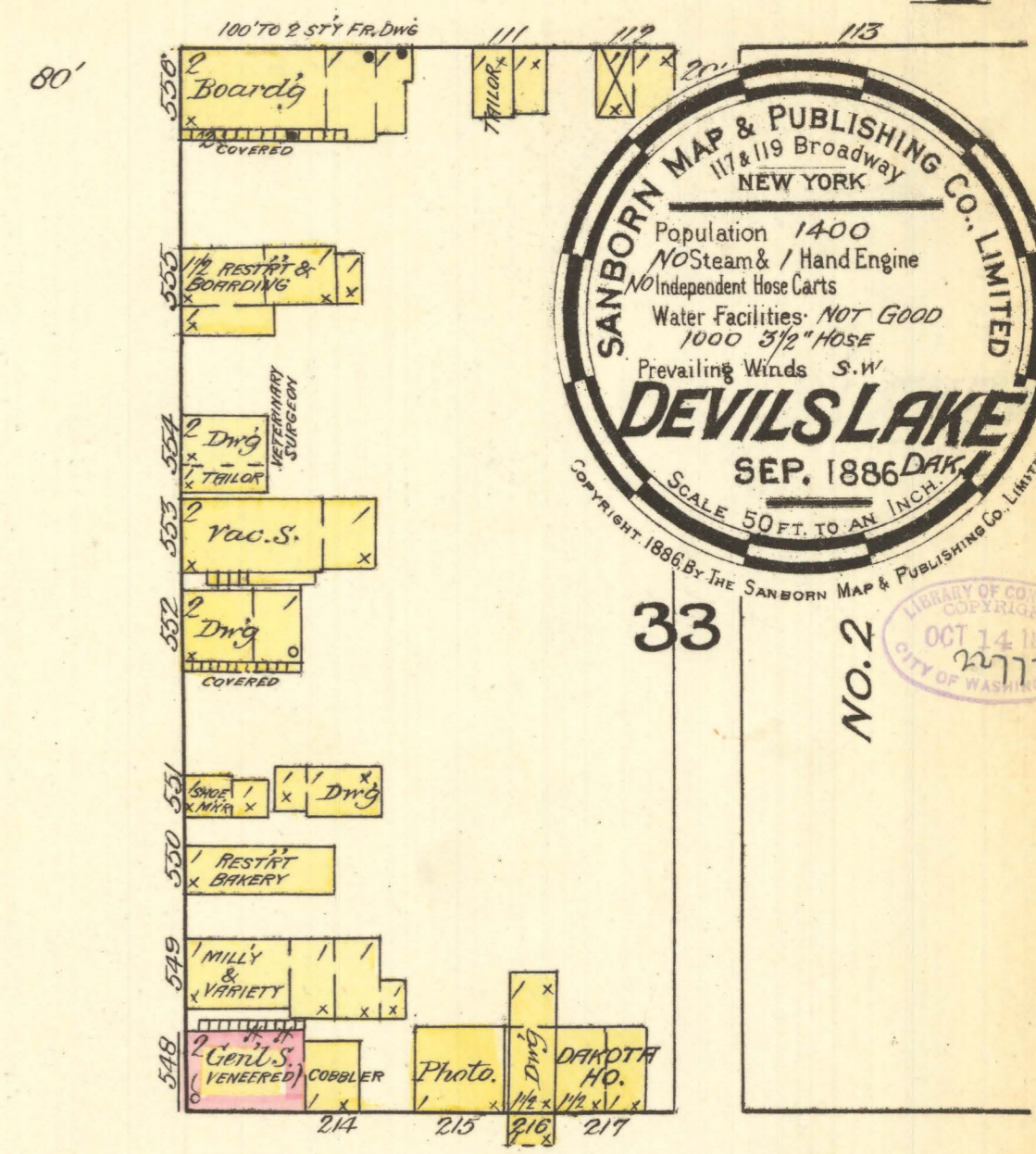
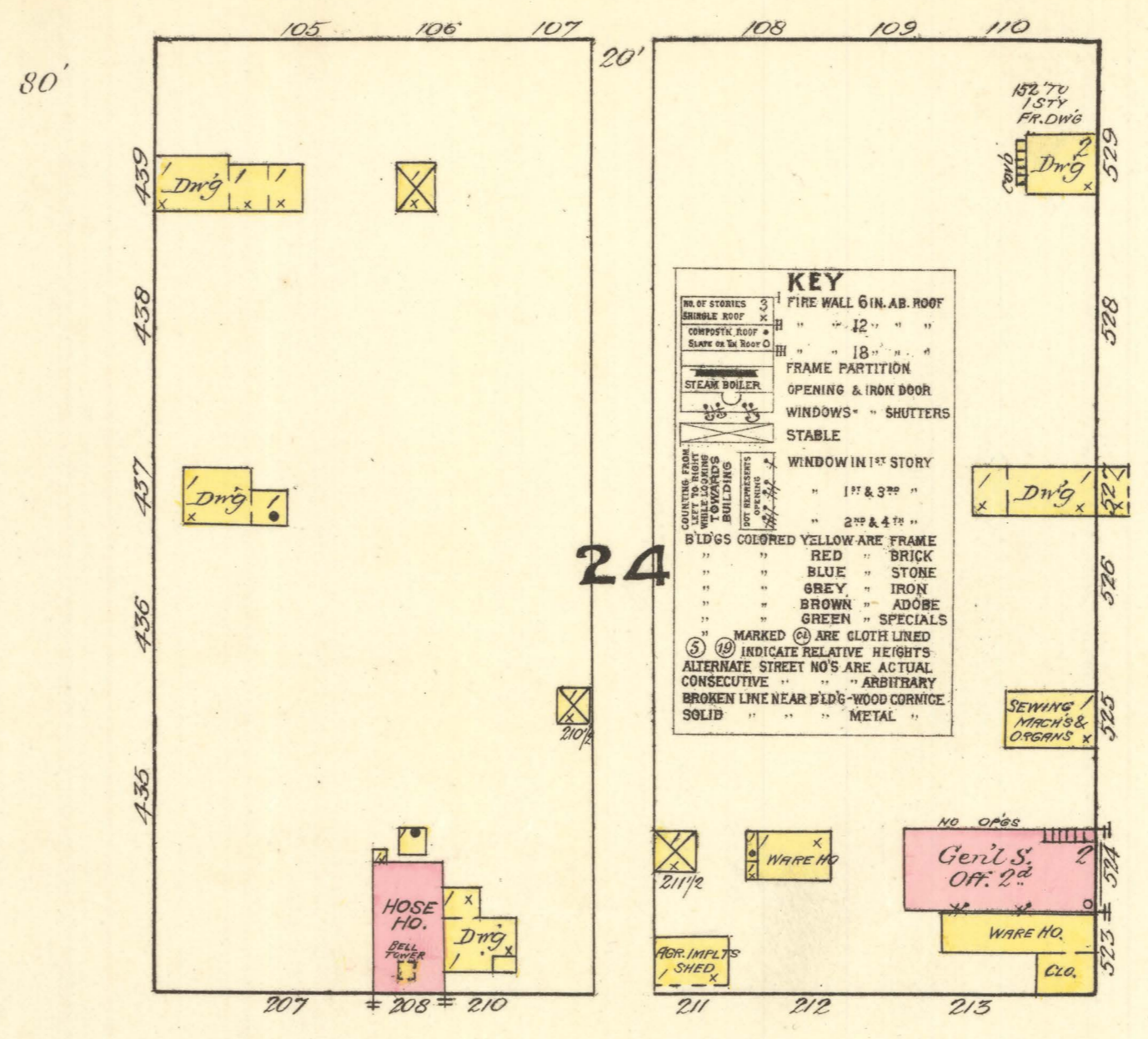
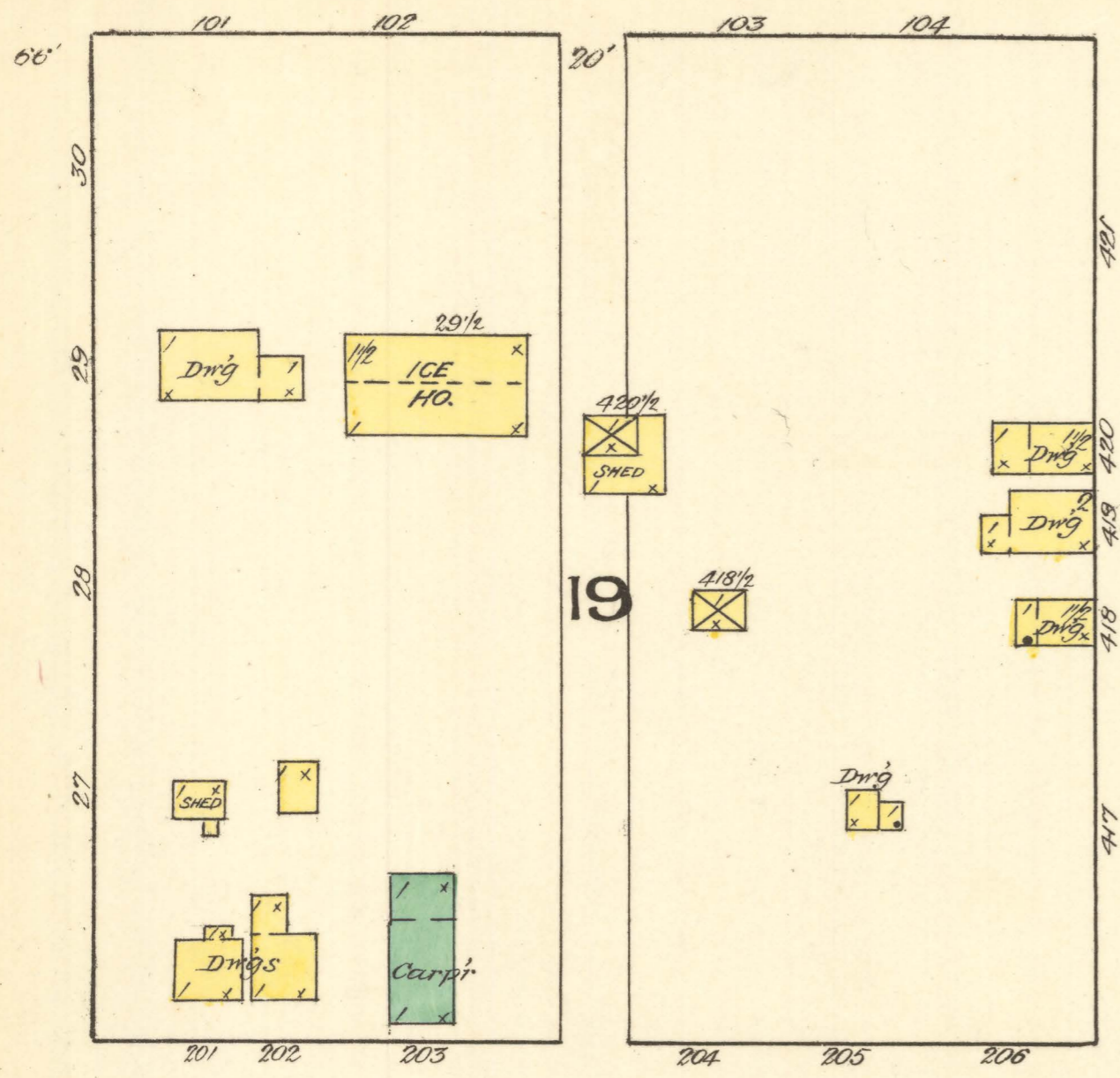
This Book is brought to you for free and open access by the Elwyn B. Robinson Department of Special Collections at UND Scholarly Commons. It has been accepted for inclusion in Sanborn Maps of North Dakota by an authorized administrator of UND Scholarly Commons. For more information, please contact [und.common@library.und.edu](mailto:und.common@library.und.edu).

FARRINGTON AV.

CIST. 330 BARRELS

VACANT

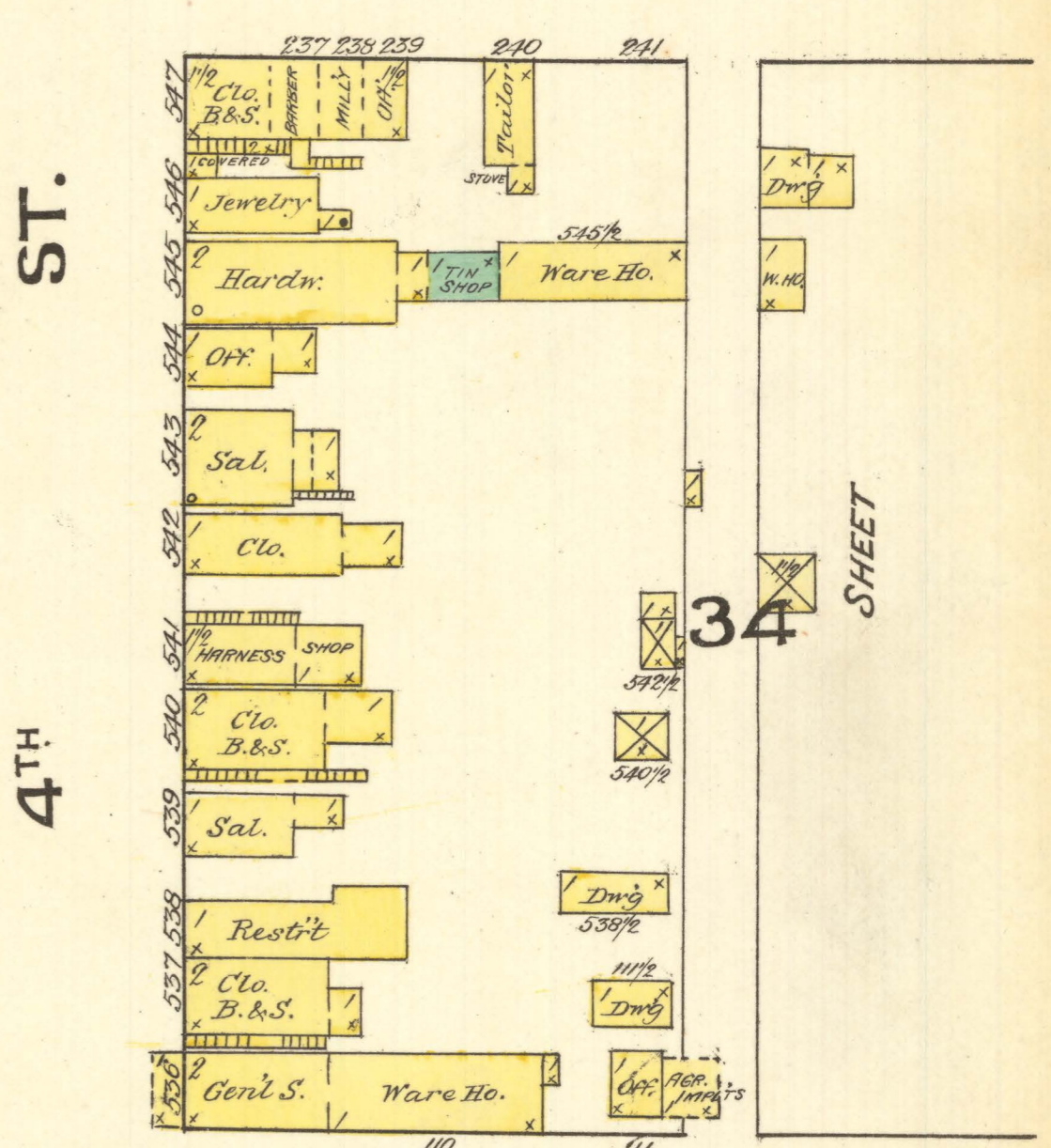
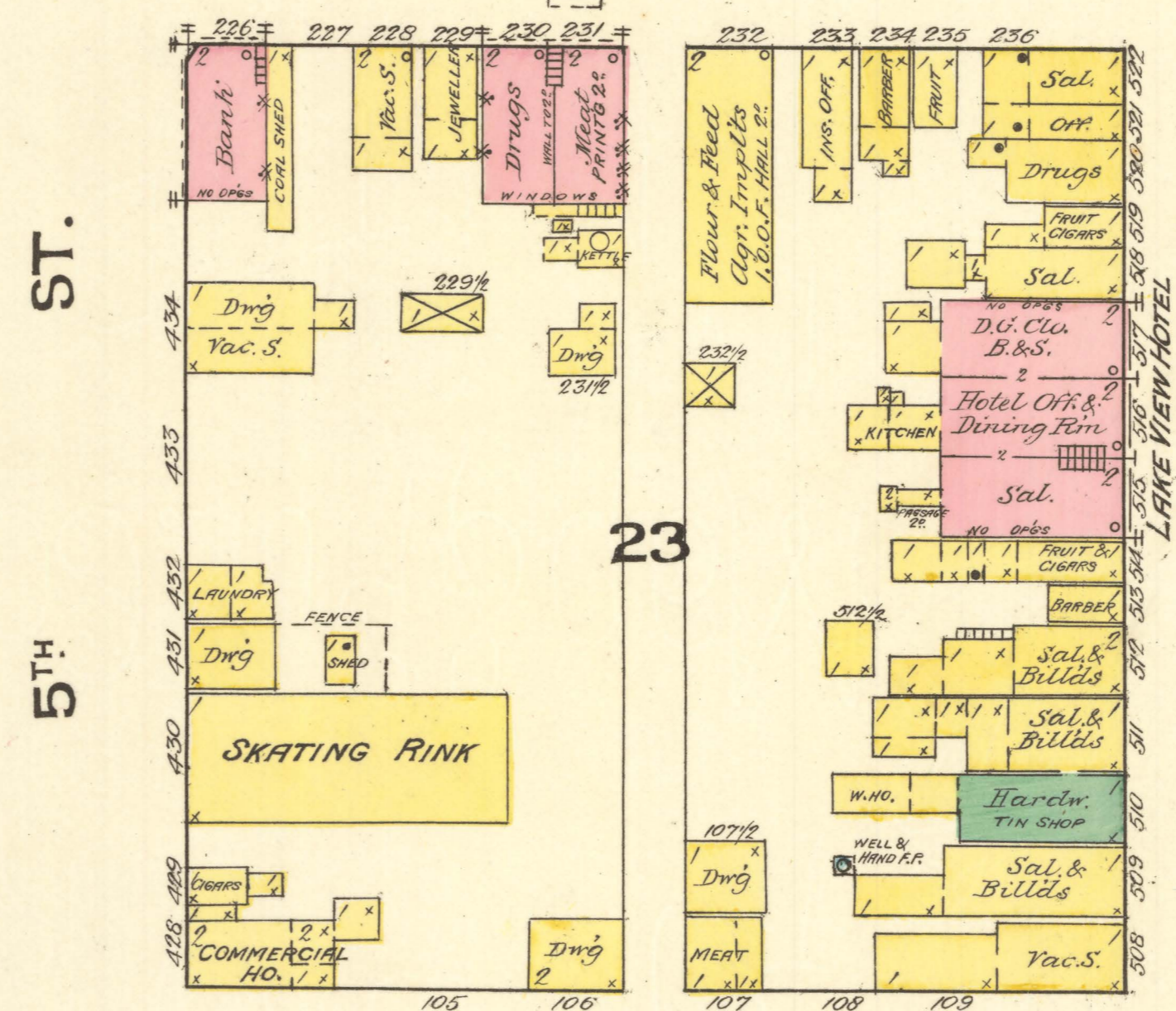
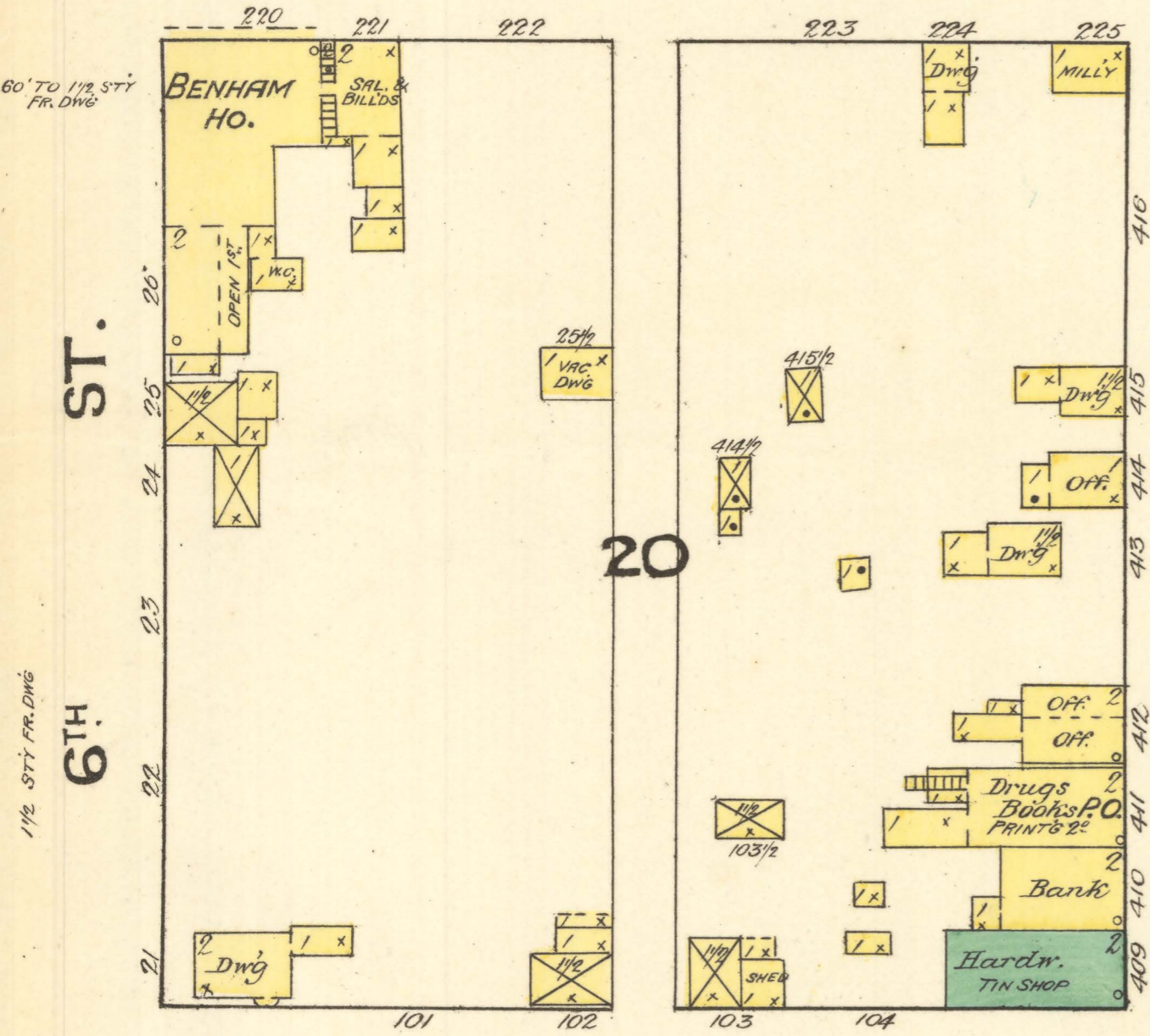
2 SHEETS



SANBORN MAP & PUBLISHING CO. LIMITED  
117 1/2 Broadway  
NEW YORK  
Population 1400  
No Steam & Hand Engine  
No Independent Horse Cars  
Water Facilities NOT GOOD  
1000 3/4" HOSE  
Prevailing Winds S.W.  
DEVILS LAKE  
SEP. 1886  
SCALE 50 FT. TO AN INCH  
Copyright 1886 by The Sanborn Map & Publishing Co. Limited

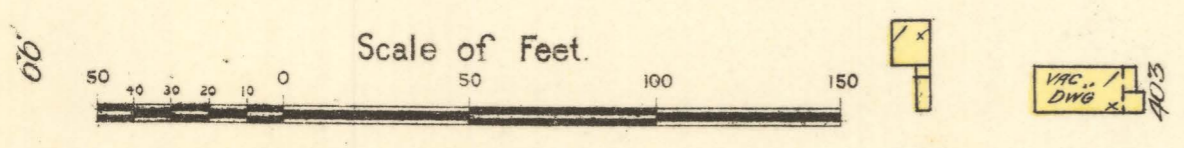
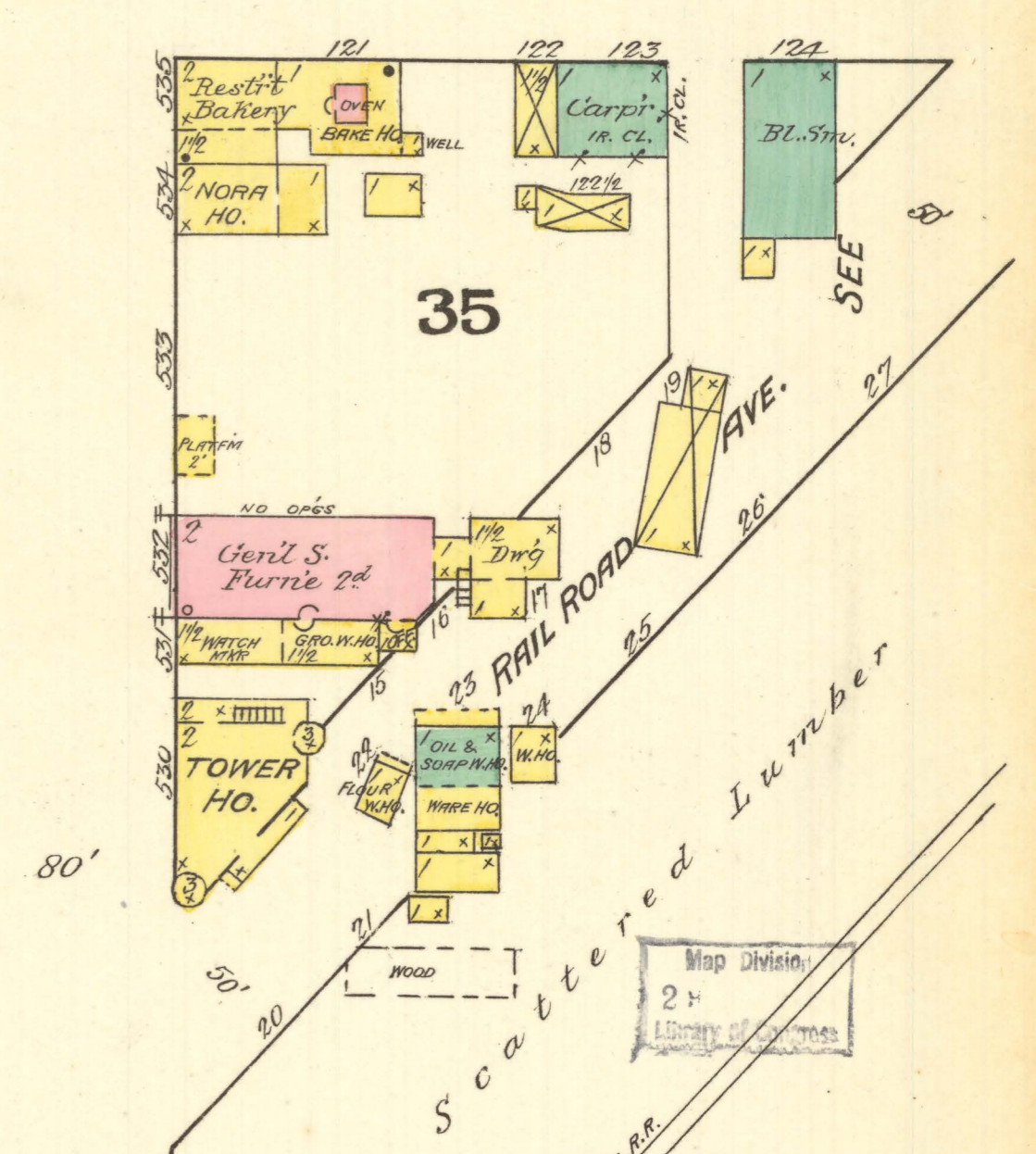
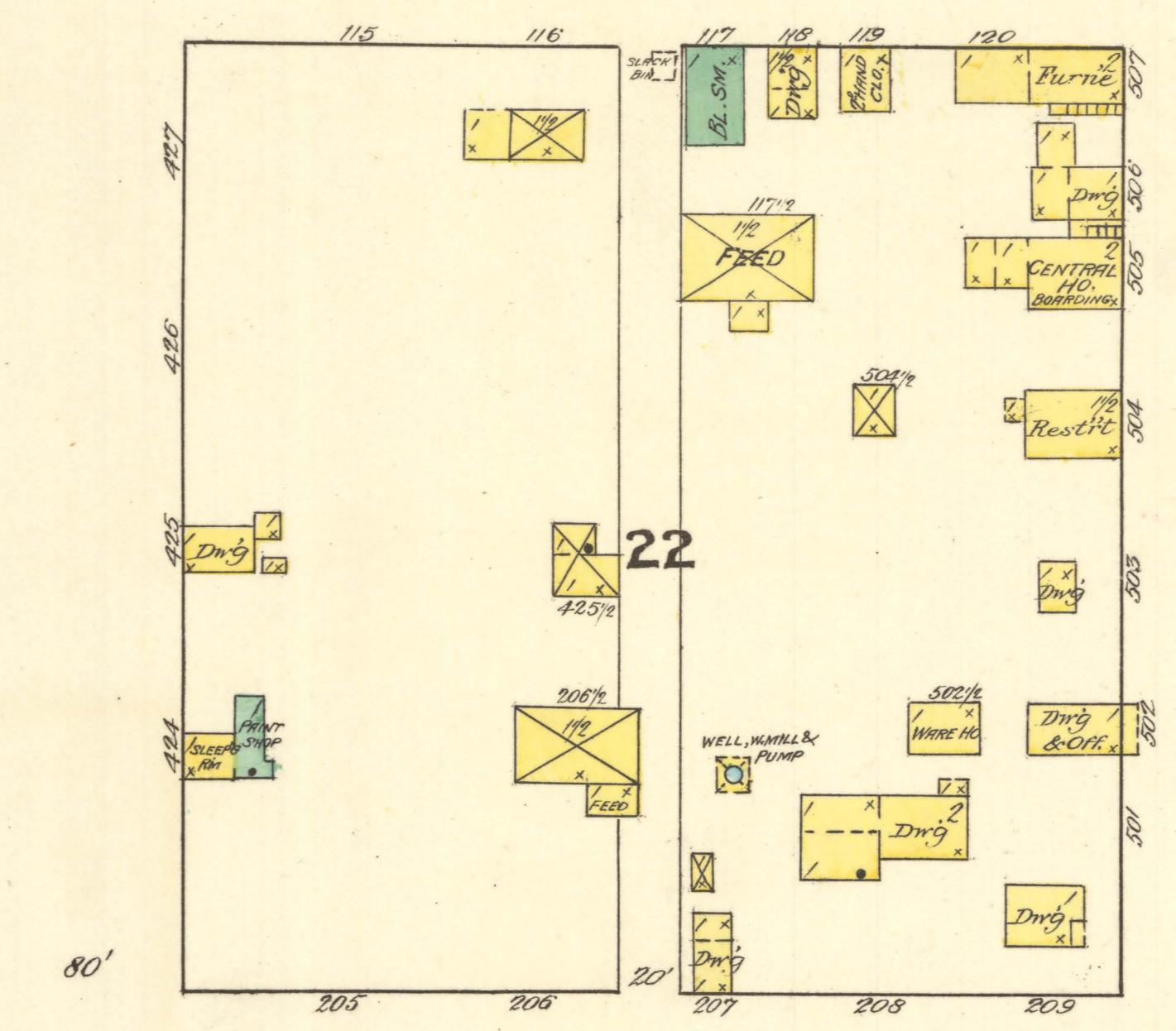
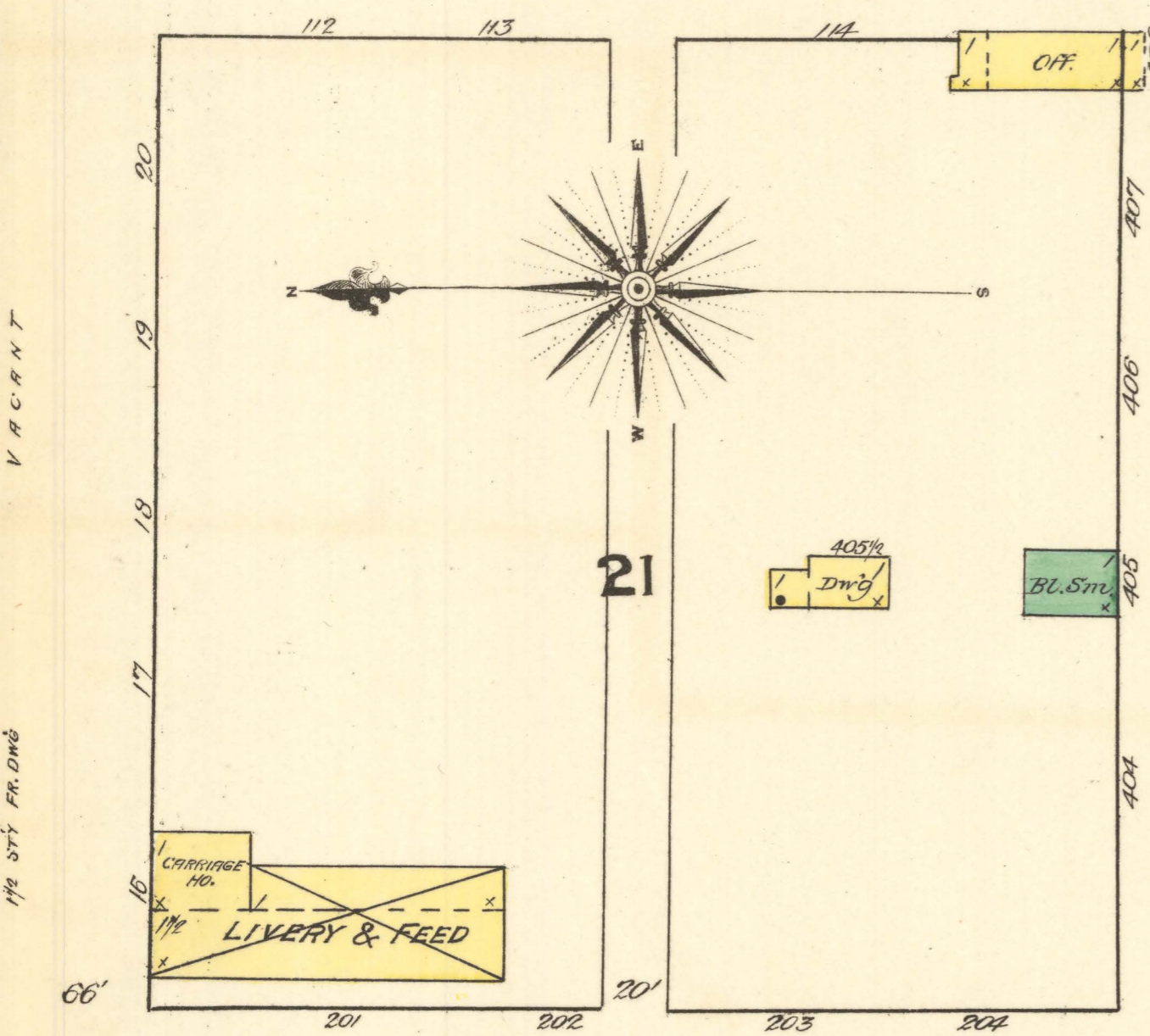
KELLY AV.

CIST. 330 BARRELS



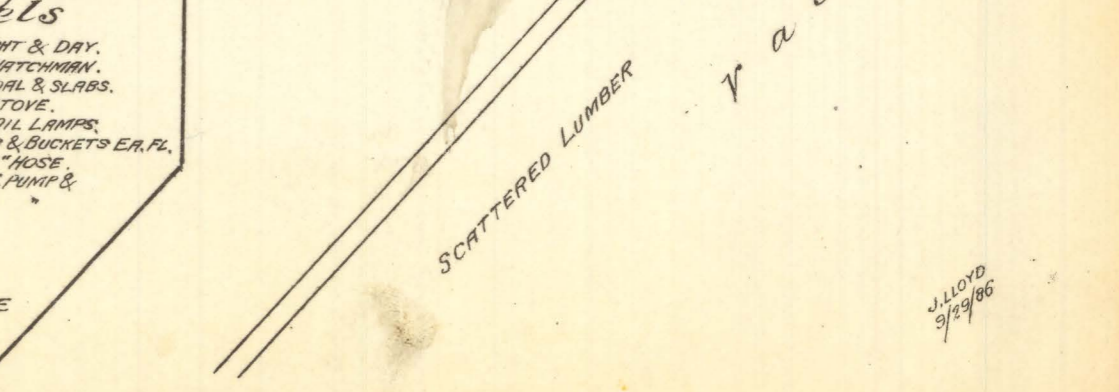
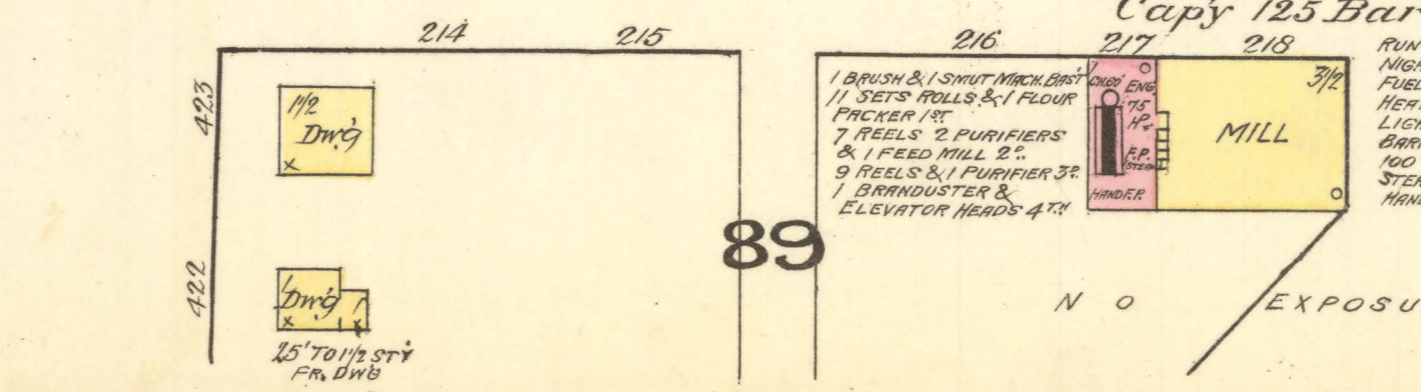
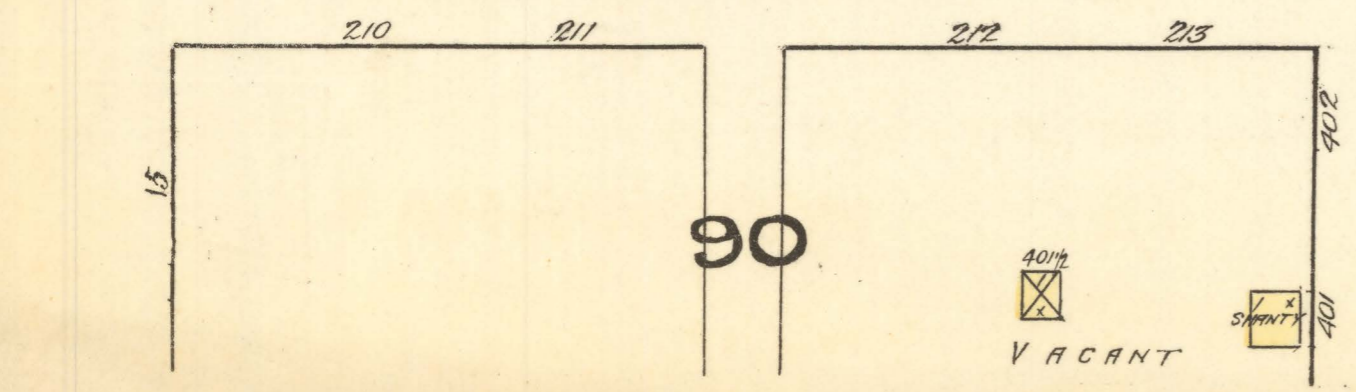
ARNOLD AV.

CIST. 330 BARRELS



FLINT AV.

AV. DEVILS LAKE ROLLER MILLS  
WEIERMULLER BROS. PROPRIETORS  
Cap'y 125 Barrels



Scattered Lumber  
ST. P. & M. R.R.  
VACANT