



11-1904

Cooperstown, 1904

Sanborn Map Company

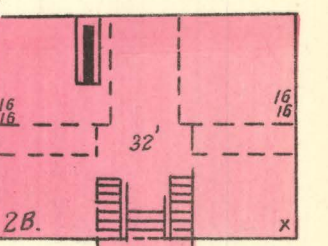
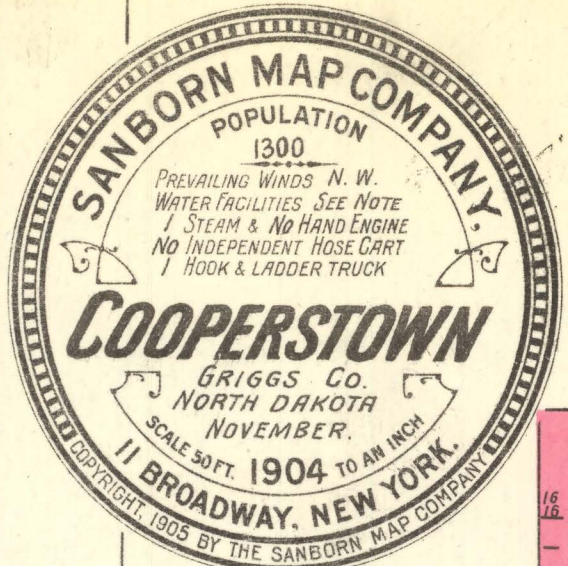
[How does access to this work benefit you? Let us know!](#)

Follow this and additional works at: <https://commons.und.edu/sanborn-maps>

Recommended Citation

Sanborn Map Company, "Cooperstown, 1904" (1904). *Sanborn Maps of North Dakota*. 51.
<https://commons.und.edu/sanborn-maps/51>

This Book is brought to you for free and open access by the Elwyn B. Robinson Department of Special Collections at UND Scholarly Commons. It has been accepted for inclusion in Sanborn Maps of North Dakota by an authorized administrator of UND Scholarly Commons. For more information, please contact und.common@library.und.edu.



PUBLIC SCHOOL.
HEAT: STEAM.
NO LIGHTS.
18

Note -
WATER FACILITIES: TOWN SITE LEVEL. FOR FIRE
PURPOSES THERE ARE 6 CISTS. OF 1000 GALS.
CAPY. EACH. & ARE FILLED FROM A PUBLIC WELL
AT THE FIRE ENG. HO.
FIRE DEPT. VOL. 30 MEMBERS. 1 WATEROUS
STEAM ENG. 2 HOSE CARTS. 2500' HOSE.
1-30 GILL. CHEMICAL WITH 150' HOSE.

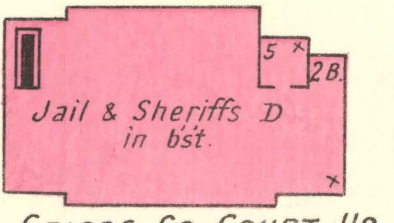
THE LIBRARY OF
CONGRESS
Two Copies Received
JAN 20 1908
Copyright Entry
March 19 1905
CLASS. 33a. Res.
6970
COPY A.

12TH ST.
80'
80'

FOSTER AV.

ROLLIN AV.

COOPERS ADD'N.



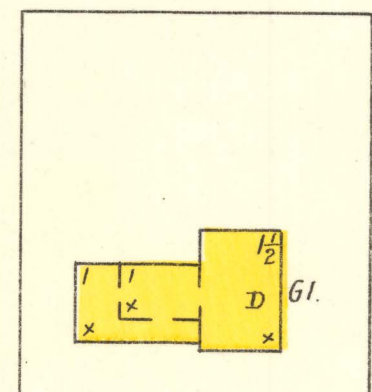
Jail & Sheriff's D.
in bst.
GRIGGS CO. COURT HO.
HEAT: STEAM.
LIGHTS: LAMPS.
3

FARMLAND AV.

SEVENTH

ROLLIN AV.

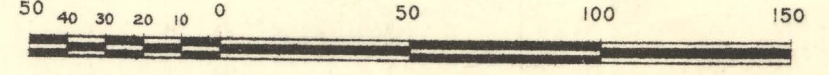
AV.



61

KL
Section
No.

Scale of Feet.

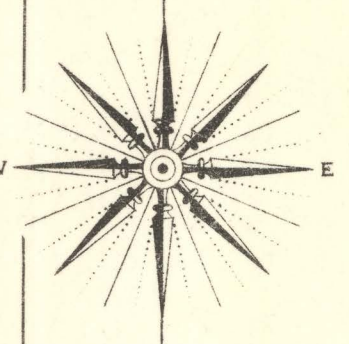


52

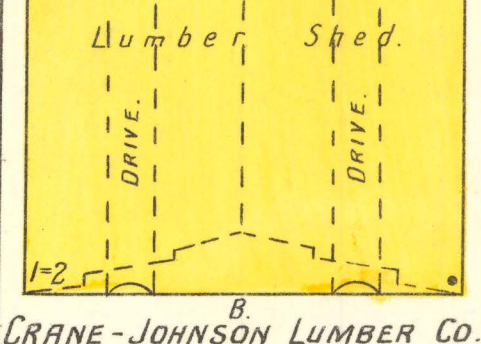
COOPERSTOWN ROLLER MILL.
CAPY. 75 BBL.

LIGHT: COAL OIL LANTERNS. HEAT: STEAM.
WATCH BARRELS: EACH FLY.
MACHY. - 1ST FLOUR PACKER, 1 EUROPEA SCOURER.
- 1 MILLS FEED MILL.
- 2ND FLOUR PACKER.
- 2 GRAMM.
- 1 MITCHELL PRANS SEPARATOR.
- 3RD UNIVERSAL BOLTER, 2 CENTRI.
- REELS, 1 SCHEPPE, 1 SCOURER, 2 PUMPS.
- 2 CYCL. DUST COLTRNS.

ROBERTS AV.



57



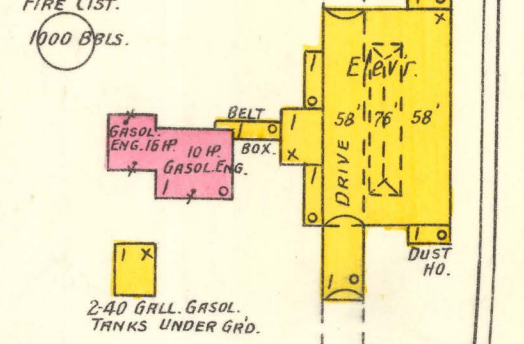
Lumber Shed.
CRANE-JOHNSON LUMBER CO.

BURRELL AV.

76

R.C. COOPERS GRAIN ELEV.
CAPY. 52000 BUSH.

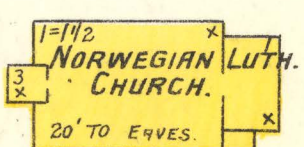
POWER: 2 GASOL ENGS. 1 FLAX CYLINDER
1 B & L SEPARATOR. NO EXPOSURE ANY SIDE.



2-40 GILL GASOL
THANKS UNDER GND.

LENHAM AV.

ROBERTS AV.

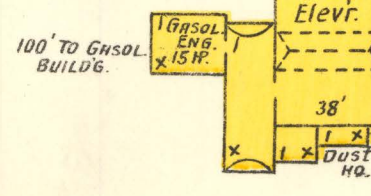


NORWEGIAN LUTH.
CHURCH.
HEAT: HOT AIR.
LIGHTS: LAMPS.
62

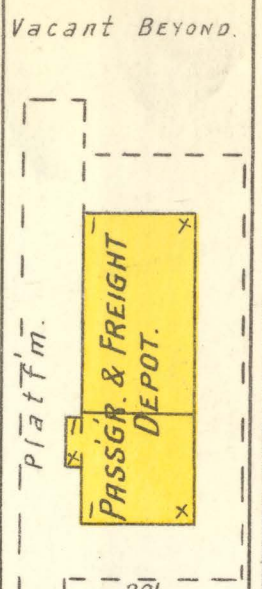
NO EXPOSURE.

N.J. OLSON'S GRAIN ELEV.
CAPY. 30000 BUSH.

POWER: 15 HP GASOL ENG GASOL KEPT
IN SMALL BRICK BUILDG. 100' W. OF ELEV.
1 B & L SEPARATOR.



100' TO GASOL
BUILDG.



PASSGR & FREIGHT
DEPOT.

KEY

THE WALL SIN. AND ROOF	METAL CORNICE
FLUTE IN ROOF	WOOD CORNICE.
FLUTE IN ROOF	FRAME PARTITION.
OPENING WITH IRON DOOR	" " " " " " " "
WINDOWS & HIGH SHUTTERS	WINDOW - 1 ST STORY.
WINDOWS 1 ST & 2 ND STORIES	" " " " " " " "
WINDOWS 3 RD & 4 TH "	" " " " " " " "
STABLE	BUILDINGS COLORED YELLOW ARE FRAME
BRICK	STONE
IRON	ADOB
SPECIALS	

INDICATE RELATIVE HEIGHTS.
FIRE STATION, AS SHOWN ON KEY MAP.
ALTERNATE STREET NUMBERS ARE ACTUAL
CONSECUTIVE STREET NOS ARE ARBITRARY.

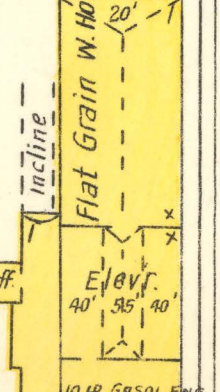
BI PRODUCT PAPER CO'S.
FLAX FIBRE MILL.
ABOUT 850' N. OF R.R. DEPOT
CLOSED AT PRESENT.
NO EXPOSURE.

MONARCH ELEV. CO.
CAPY. 30000 BUSHES.
POWER: 7 HP GASOL. ENG.

COOPERSTOWN CREAMERY.
(NOT RUNNING.)

GREAT WESTERN ELEV. CO.
CAPY. 35,000 BUSHES.
POWER: 15 HP GASOL. ENG. GASOL. TANK
IN SEPARATE BUILDG. OUTSIDE.

CARGILL ELEV. CO.
CAPY. 50000 BUSH.
POWER: 5 HP GASOL. ENG.
1 B & L SEPARATOR.



Flat Grain W. No.

Vacant Beyond 80' to Rollin Av.

SEVENTH

N. P. R. R. COOPERSTOWN BRANCH.