



10-1893

## Cooperstown, 1893

Sanborn Map Company

[How does access to this work benefit you? Let us know!](#)

Follow this and additional works at: <https://commons.und.edu/sanborn-maps>

---

### Recommended Citation

Sanborn Map Company, "Cooperstown, 1893" (1893). *Sanborn Maps of North Dakota*. 39.  
<https://commons.und.edu/sanborn-maps/39>

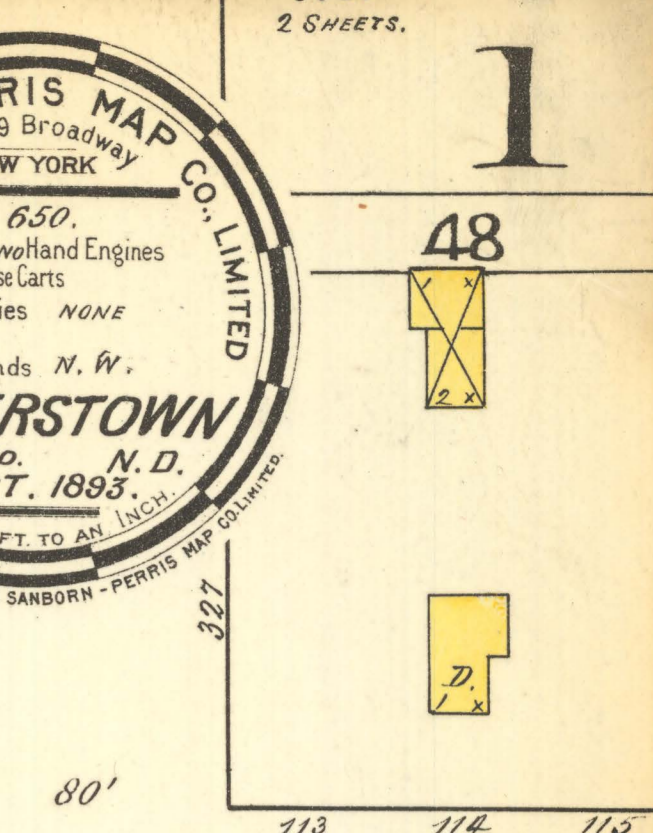
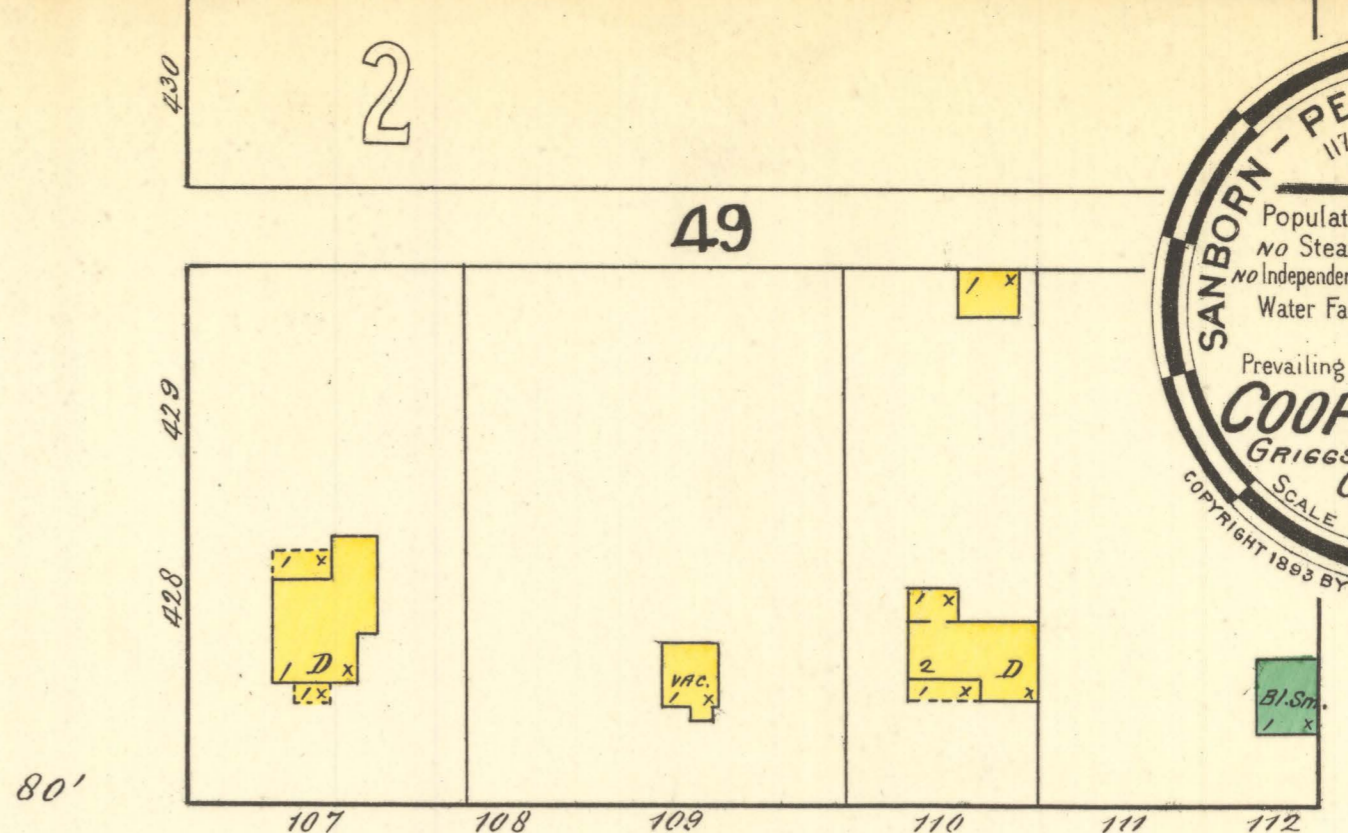
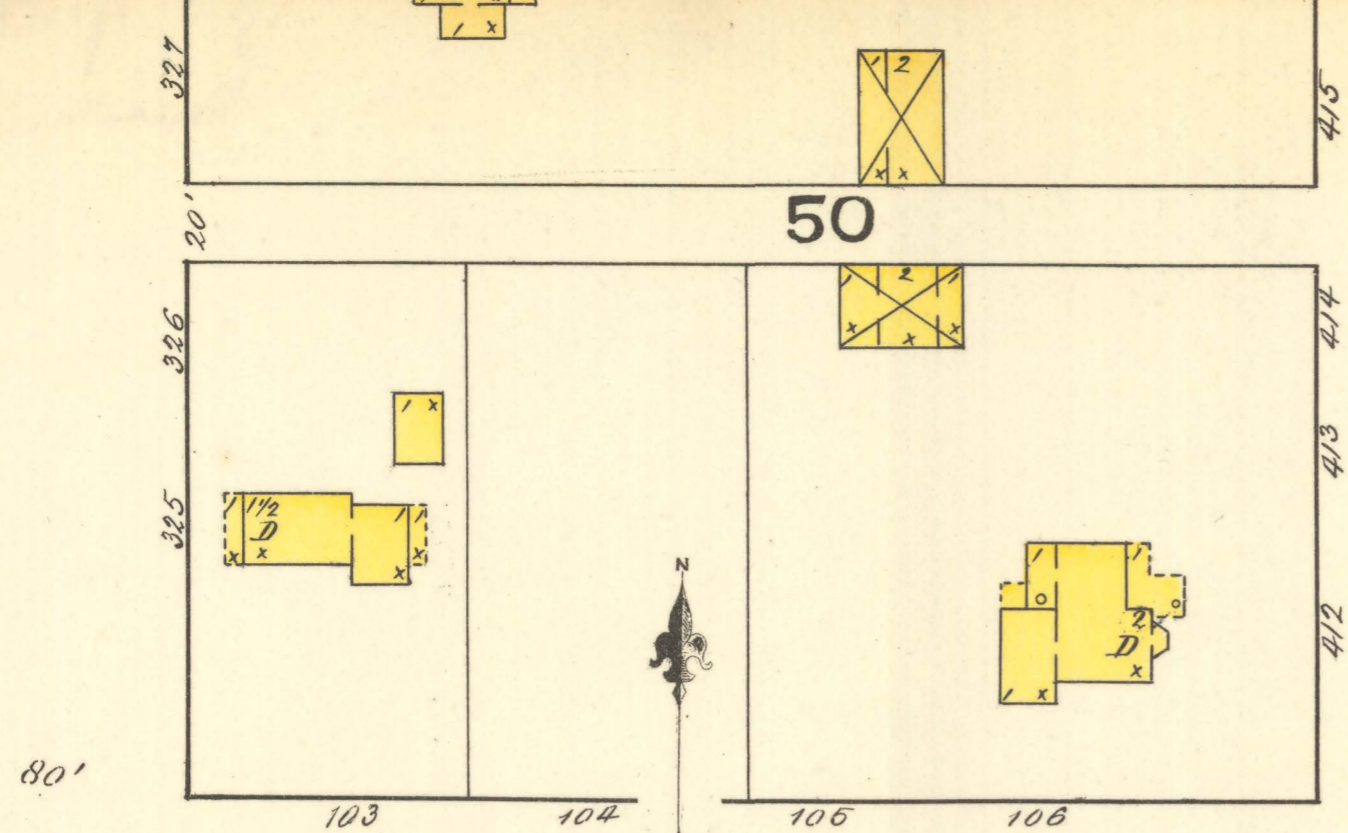
This Book is brought to you for free and open access by the Elwyn B. Robinson Department of Special Collections at UND Scholarly Commons. It has been accepted for inclusion in Sanborn Maps of North Dakota by an authorized administrator of UND Scholarly Commons. For more information, please contact [und.common@library.und.edu](mailto:und.common@library.und.edu).





**KEY**

Fire Wall	6 in. or Roof
Shingle Roof	12"
Asphalt Roof	18"
Frame Partition	
Opening & Iron Door	
Windows - Shutters	
Stable	
Window in 1st Story	
2nd & 4th	
3rd & 5th	
Buildings Colored Yellow	Frame
Red	Brick
Blue	Stone
Grey	Iron
Brown	Adobe
Green	Specials
Marked with X	Are Cloth Lined
Marked with D	Indicate Relative Heights
Alternate Street Nos	Are Actual
Consecutive	Arbitrary
Broken Line Near Bldg	Wood Cornice
Solid	Metal



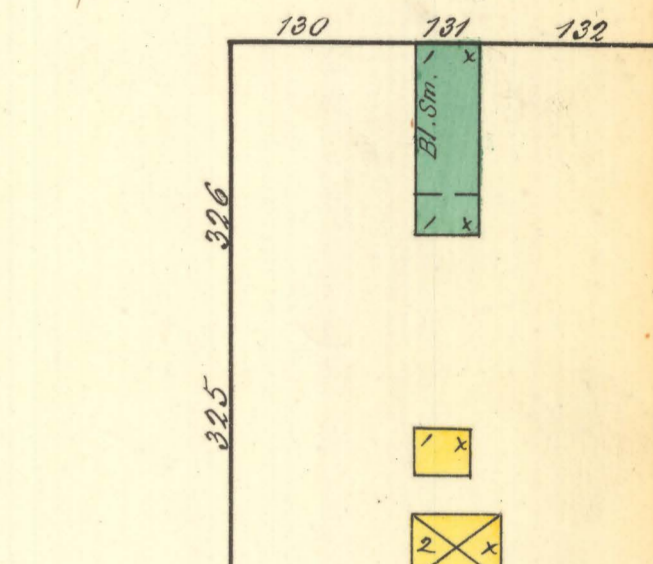
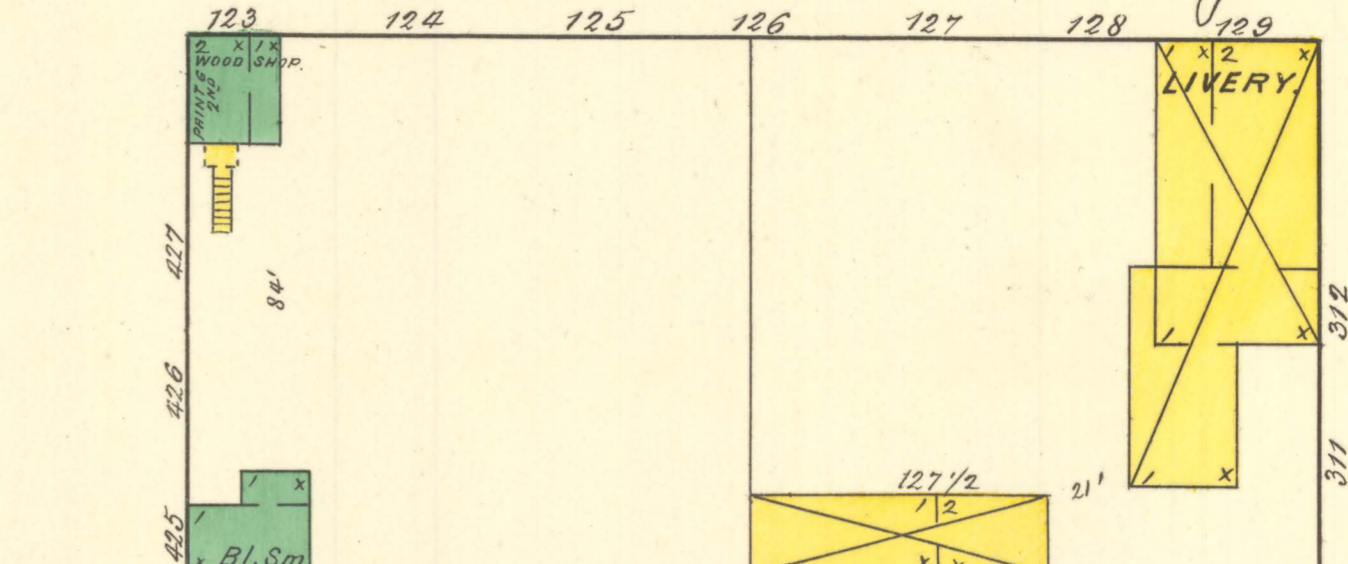
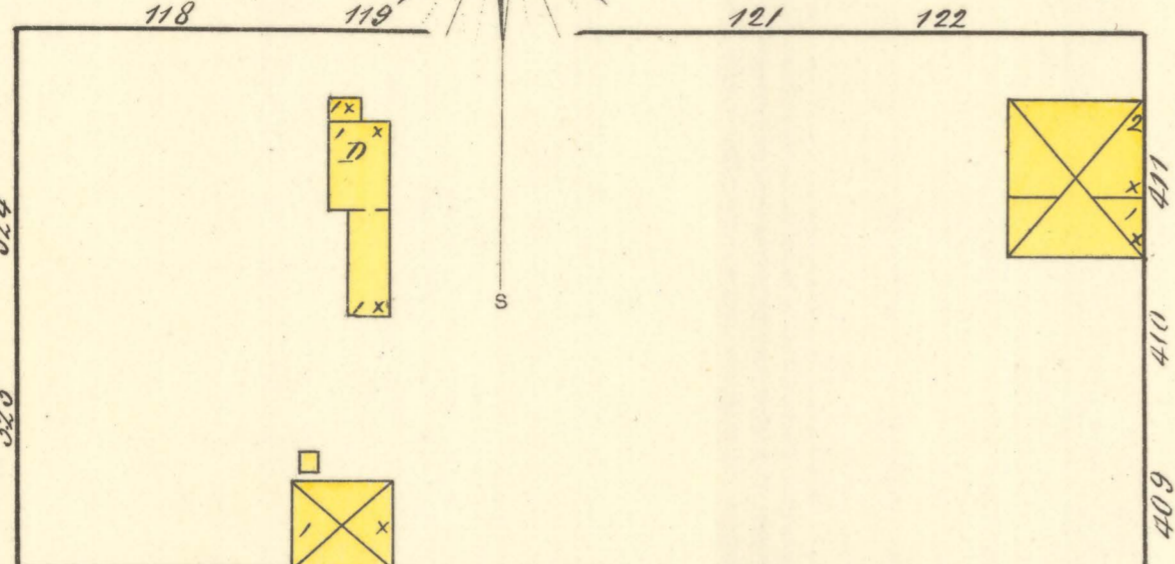
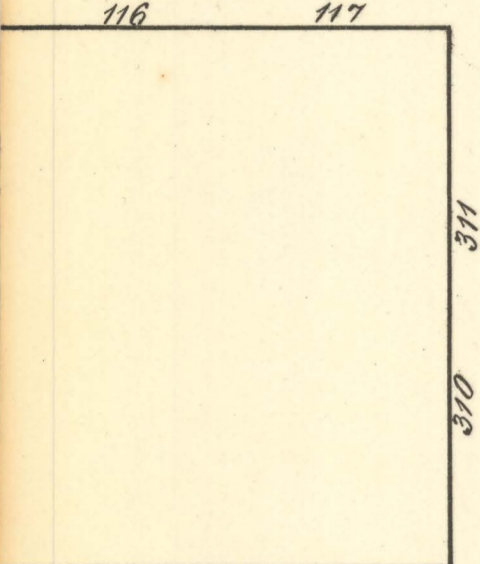
ROBERTS

AV.

EXAMINED AND APPROVED.  
*Thos E Warner*

LIBRARY OF CONGRESS  
COPYRIGHT  
NOV 18 1905  
49516  
CITY OF WARREN  
Nov 6 - 1893

20 COPY DEL TO MAP DIV.  
JUN 15 1907



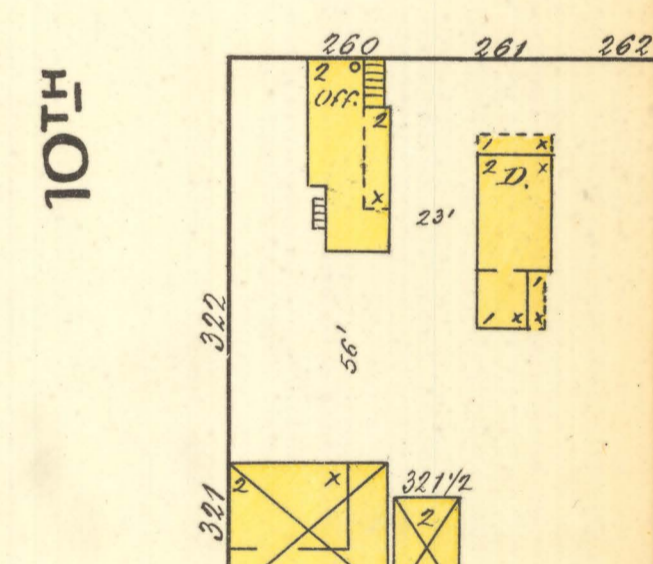
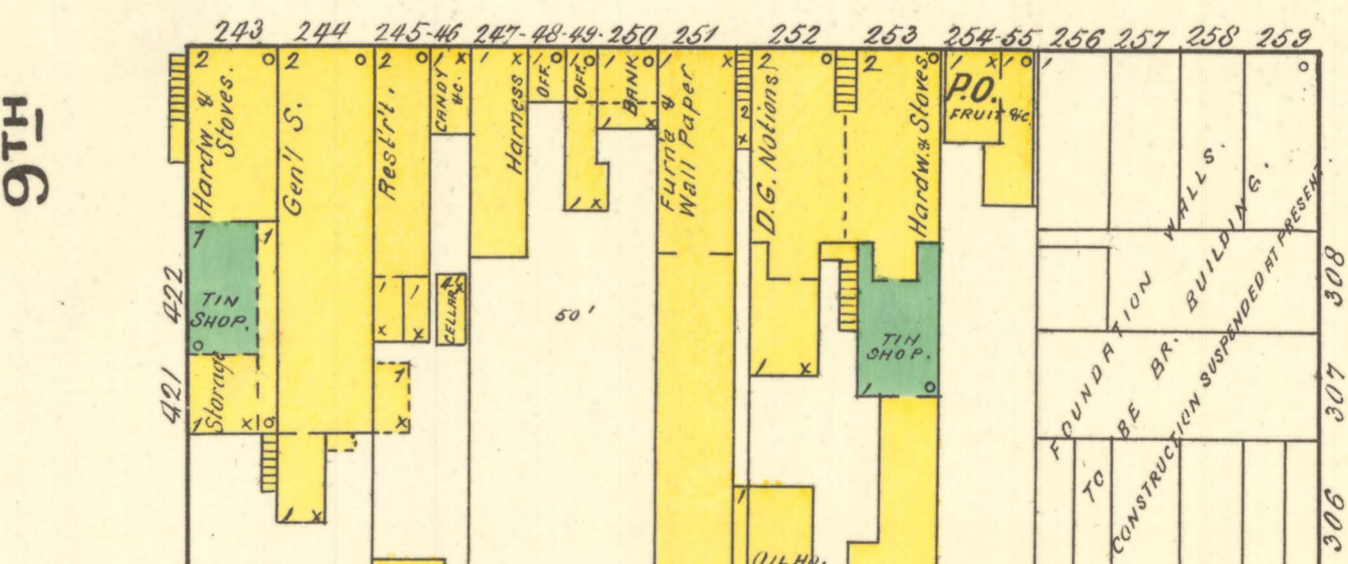
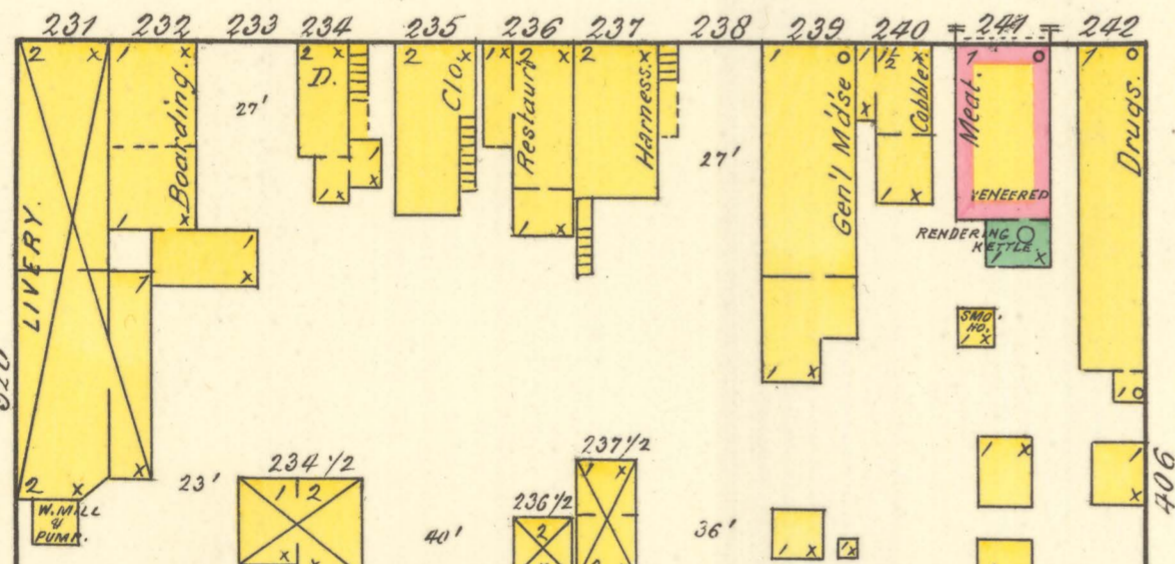
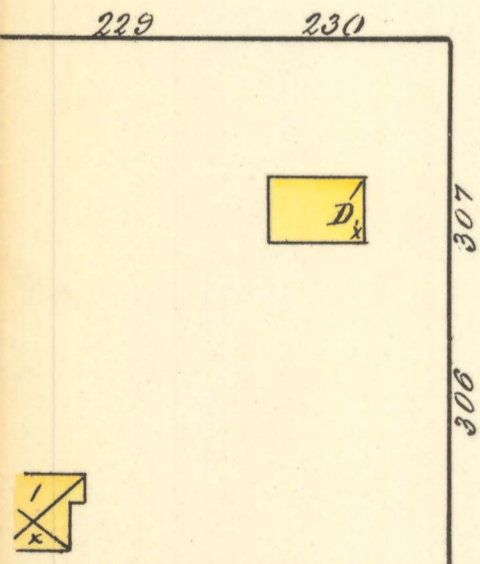
ST.

ST.

ST.

BURRELL

AV.



8TH

9TH

10TH

LENHAM

AV.

