



5-1914

## Cavalier, 1914

Sanborn Map Company

[How does access to this work benefit you? Let us know!](#)

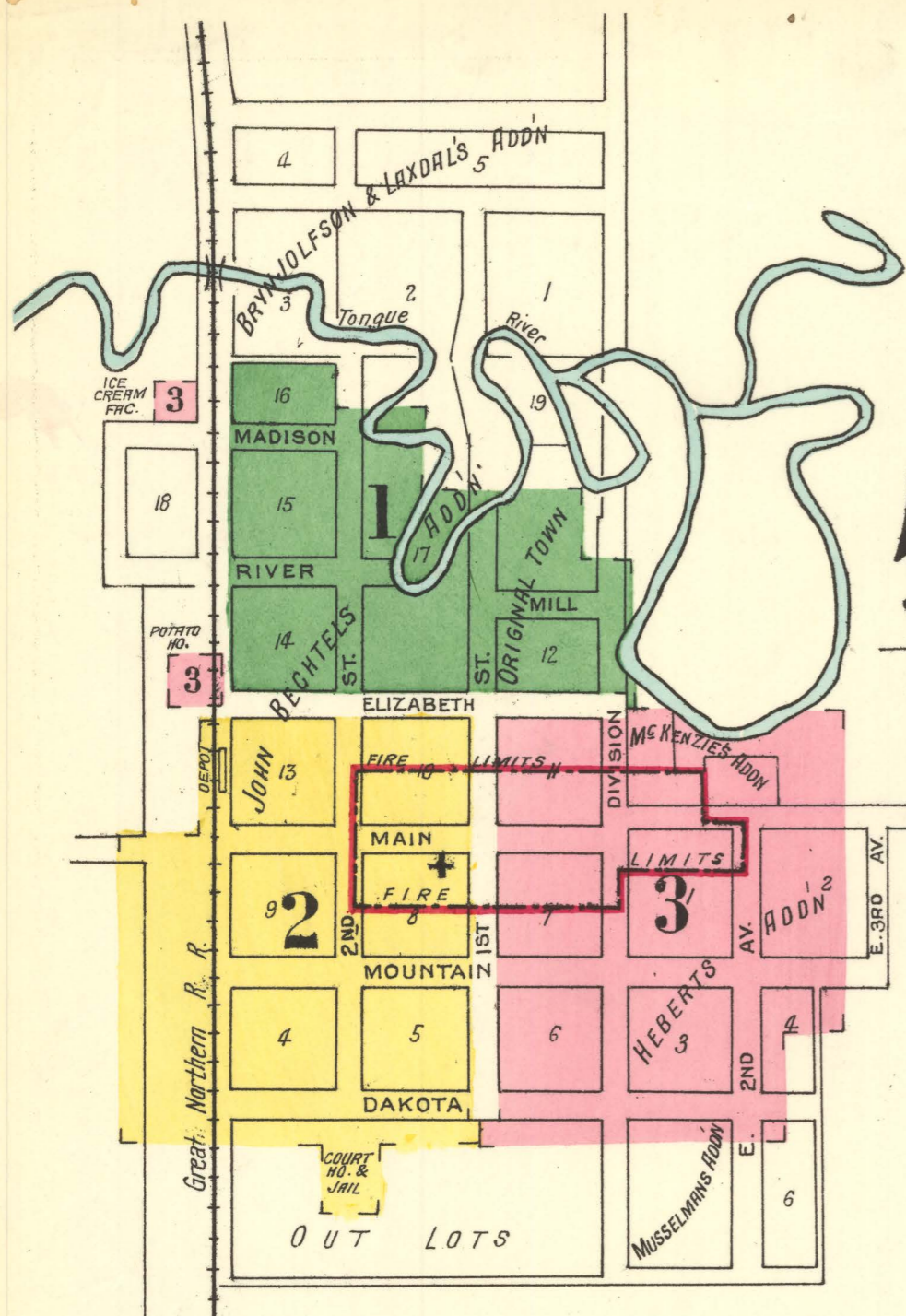
Follow this and additional works at: <https://commons.und.edu/sanborn-maps>

---

### Recommended Citation

Sanborn Map Company, "Cavalier, 1914" (1914). *Sanborn Maps of North Dakota*. 40.  
<https://commons.und.edu/sanborn-maps/40>

This Book is brought to you for free and open access by the Elwyn B. Robinson Department of Special Collections at UND Scholarly Commons. It has been accepted for inclusion in Sanborn Maps of North Dakota by an authorized administrator of UND Scholarly Commons. For more information, please contact [und.common@library.und.edu](mailto:und.common@library.und.edu).



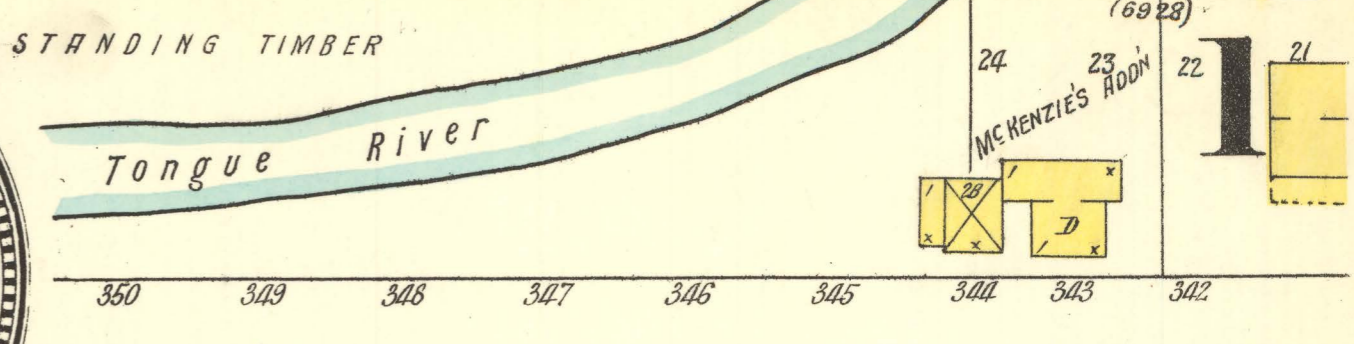
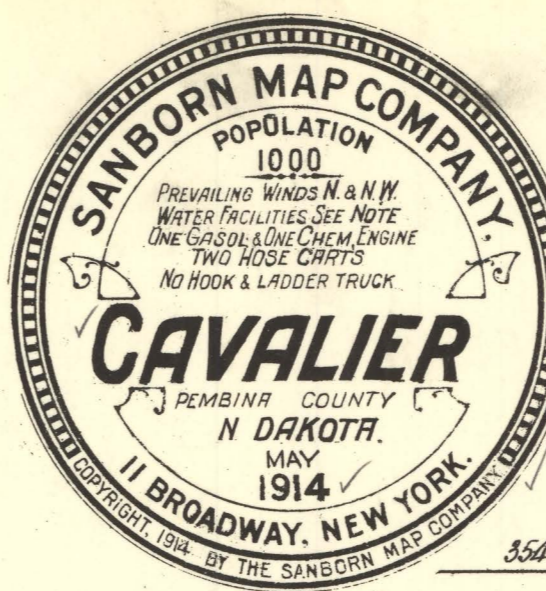
**WATER FACILITIES**  
1400 Barrel Gaster in Station, private Wells and River

**FIRE DEPT**  
24 Volunteers - 1 Waterous 400' gasol. fire eng. capcy 350 gals. per minute pressure 125 lbs. - 2 Hds. Carts 1000' hse. each. - 600' of old hose for emergency - One 40 gallon Chemical Equide with 100' hose atnd - Fire alarm Bgt on Fire Station - Townsite level - No paving - Lighting - Electric-

**KEY**

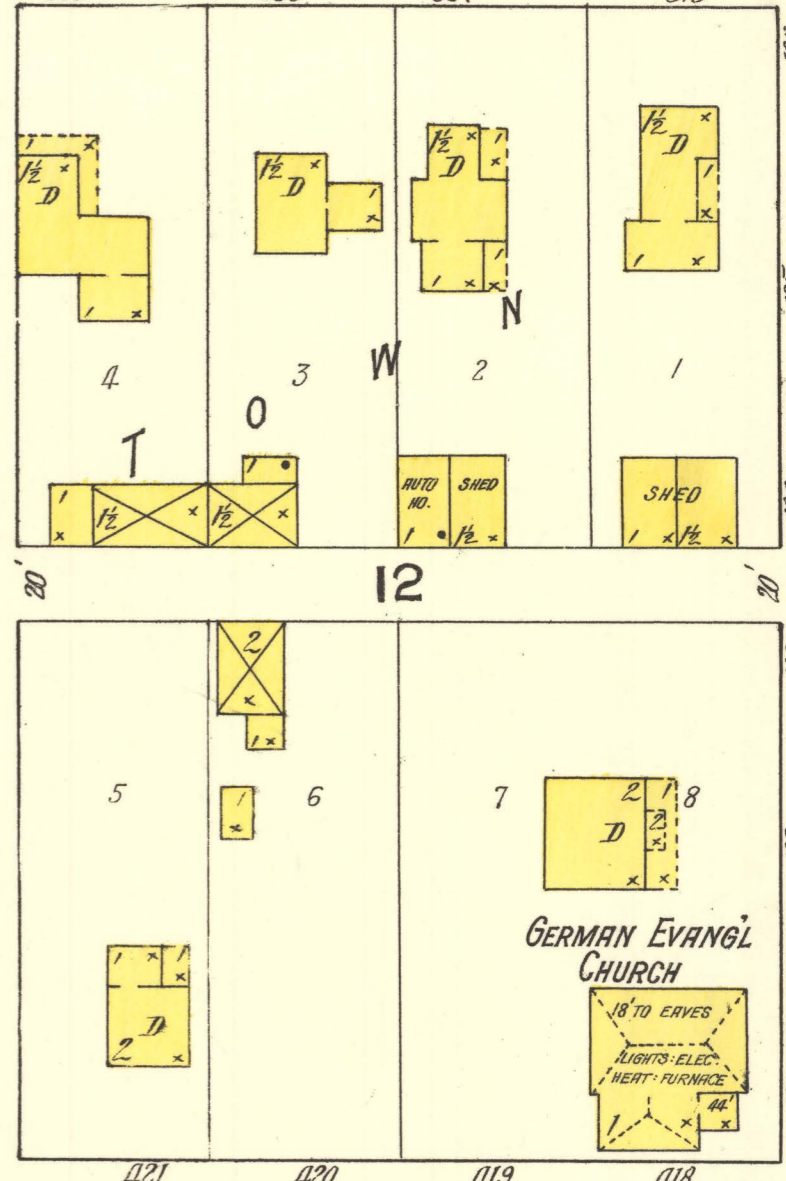
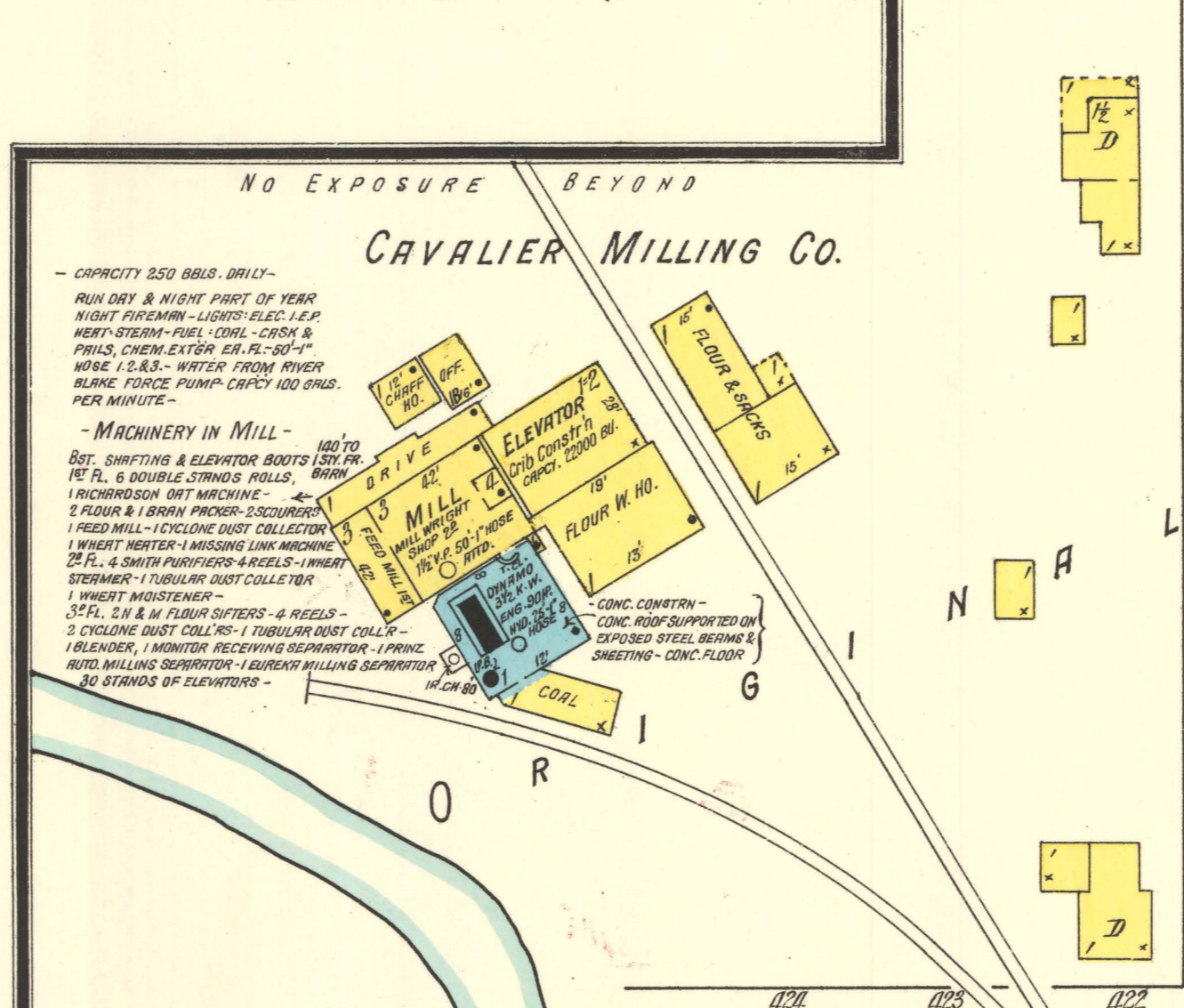
(Symbol)	FIRE WALL 6" IN ABV ROOF
(Symbol)	FIRE WALL 12" IN ABV ROOF
(Symbol)	WOOD CORNICE
(Symbol)	FIRE WALL 10" IN ABV ROOF
(Symbol)	FRAME PARTITION
(Symbol)	OPENING WITH IRON DOOR
(Symbol)	" " " " STANDARD
(Symbol)	IRON SHUTTERS
(Symbol)	WINDOWS & IRON SHUTTERS
(Symbol)	WINDOW 1 1/2 STORY
(Symbol)	WINDOWS 1 1/2 & 3/4 STORES
(Symbol)	" " " " " 2 1/2 & 4"
(Symbol)	STABLE
(Symbol)	BUILDINGS COLORED YELLOW ARE FRAME BRICK
(Symbol)	" " " " " RED
(Symbol)	" " " " " BLUE
(Symbol)	" " " " " GRAY
(Symbol)	" " " " " BROWN
(Symbol)	" " " " " BROWN FIRE PROOF
(Symbol)	INDICATE RELATIVE HEIGHTS
(Symbol)	FIRE STATION, AS SHOWN ON KEY MAP

ALTERNATE STREET NUMBERS ARE ACTUAL  
CONSECUTIVE STREET NOS ARE ARBITRARY

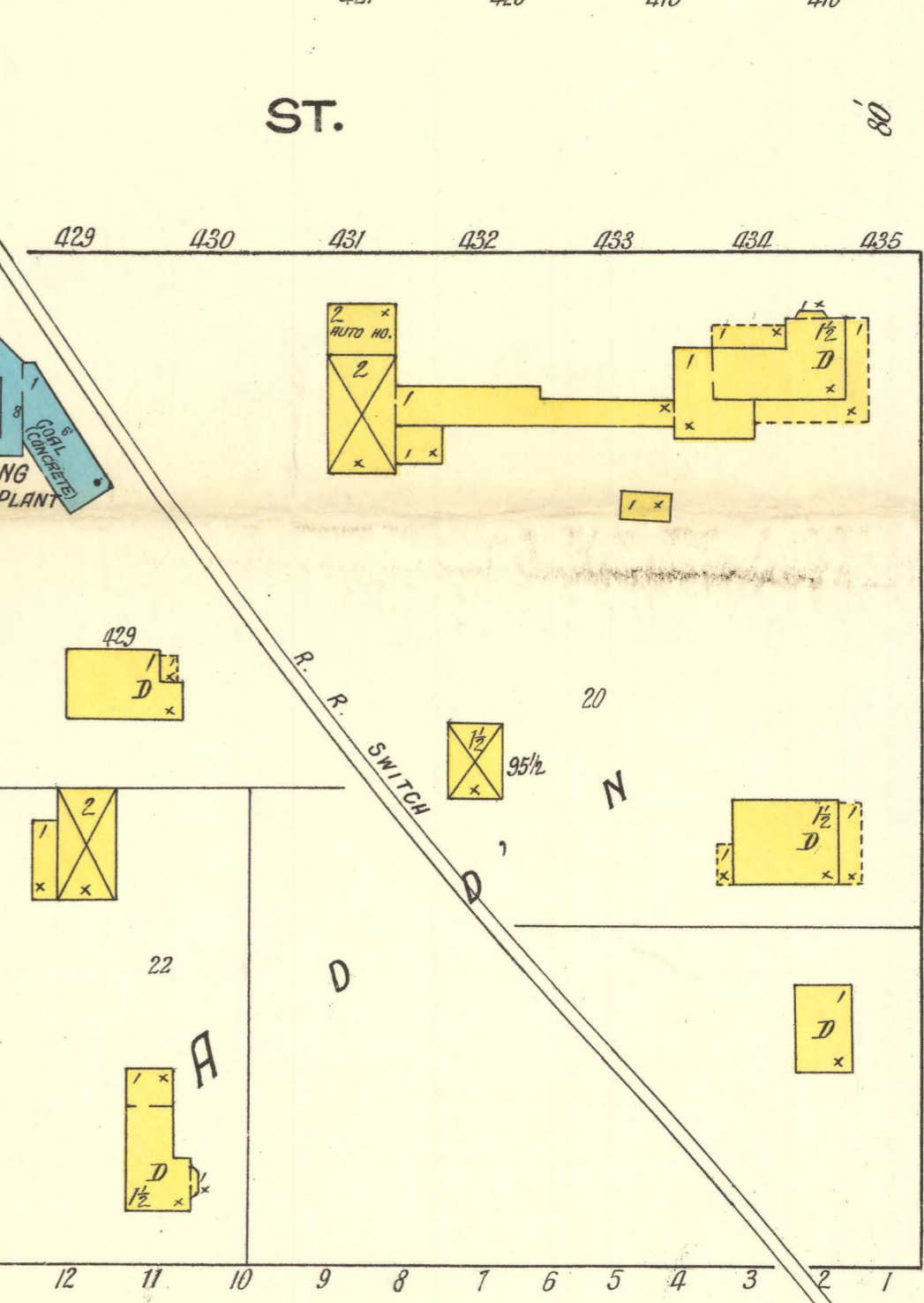
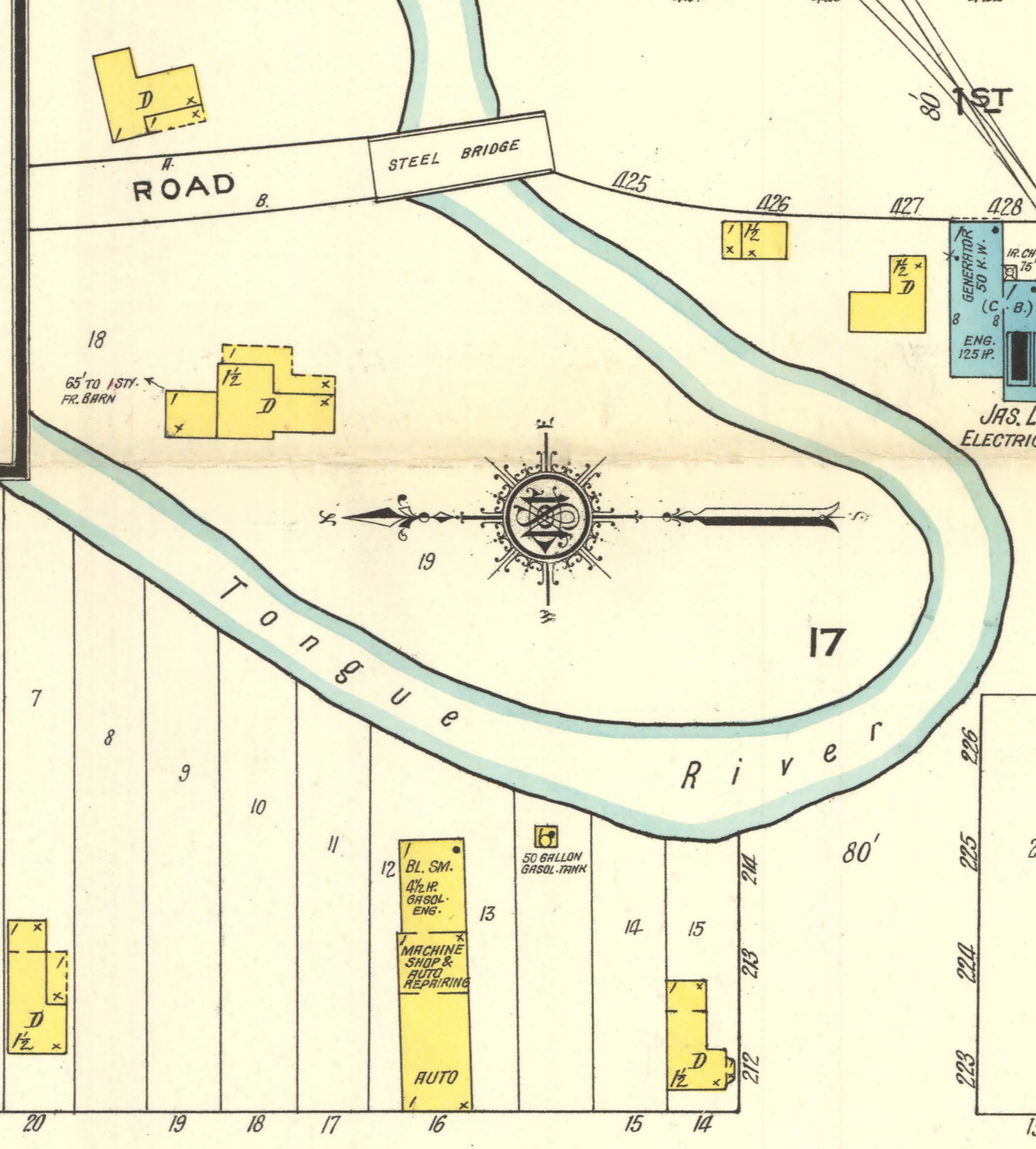
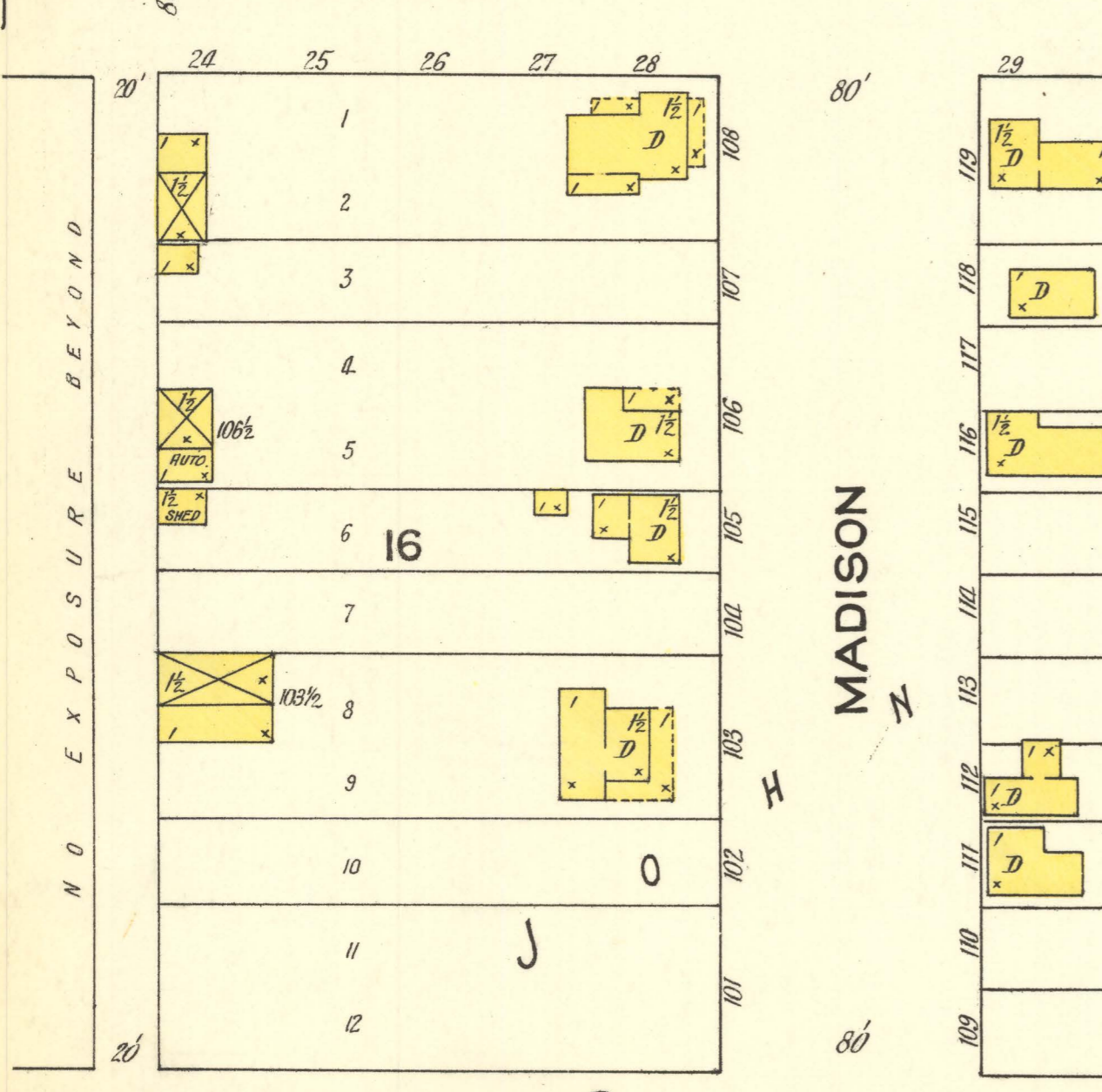
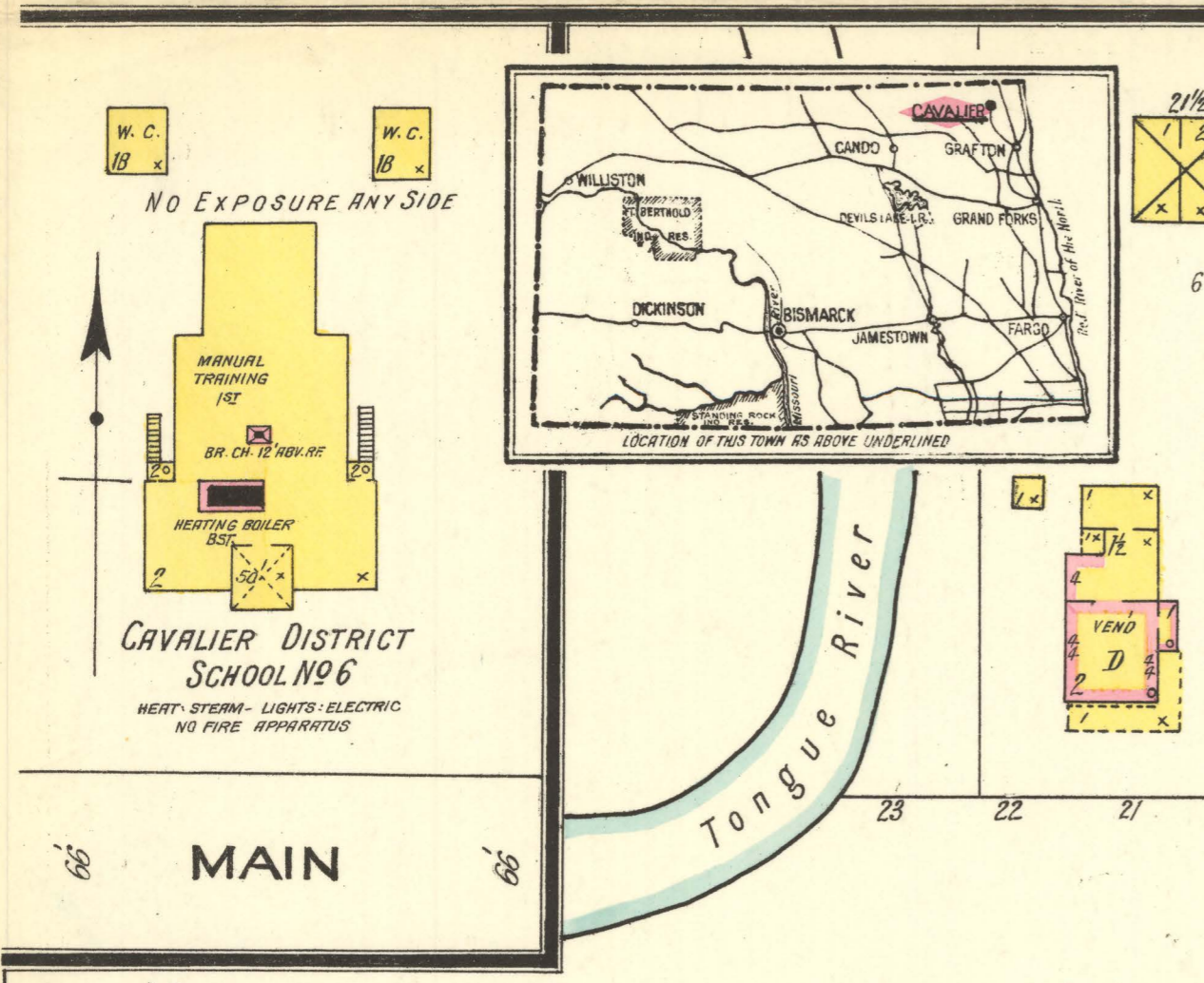


## INDEX

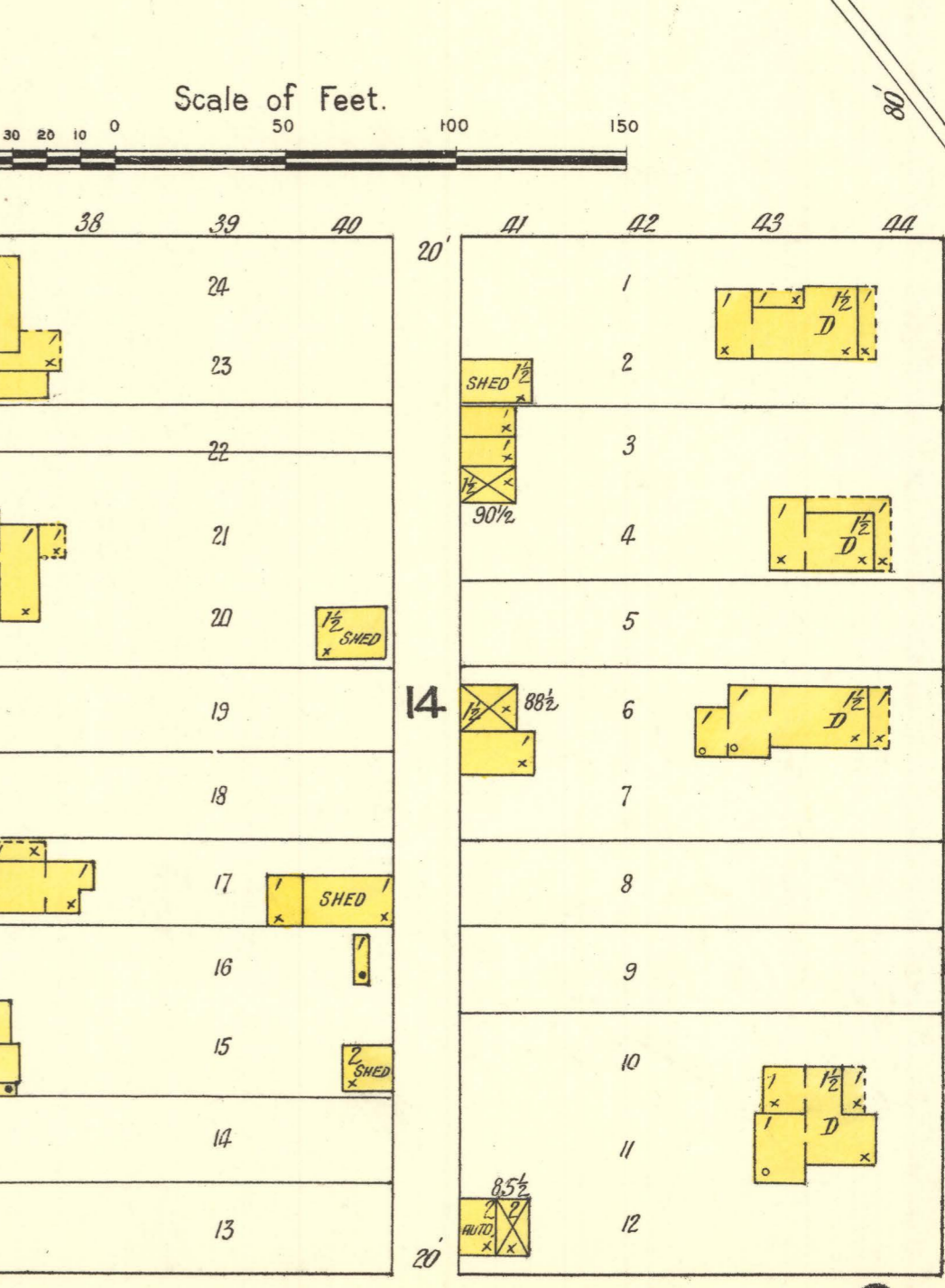
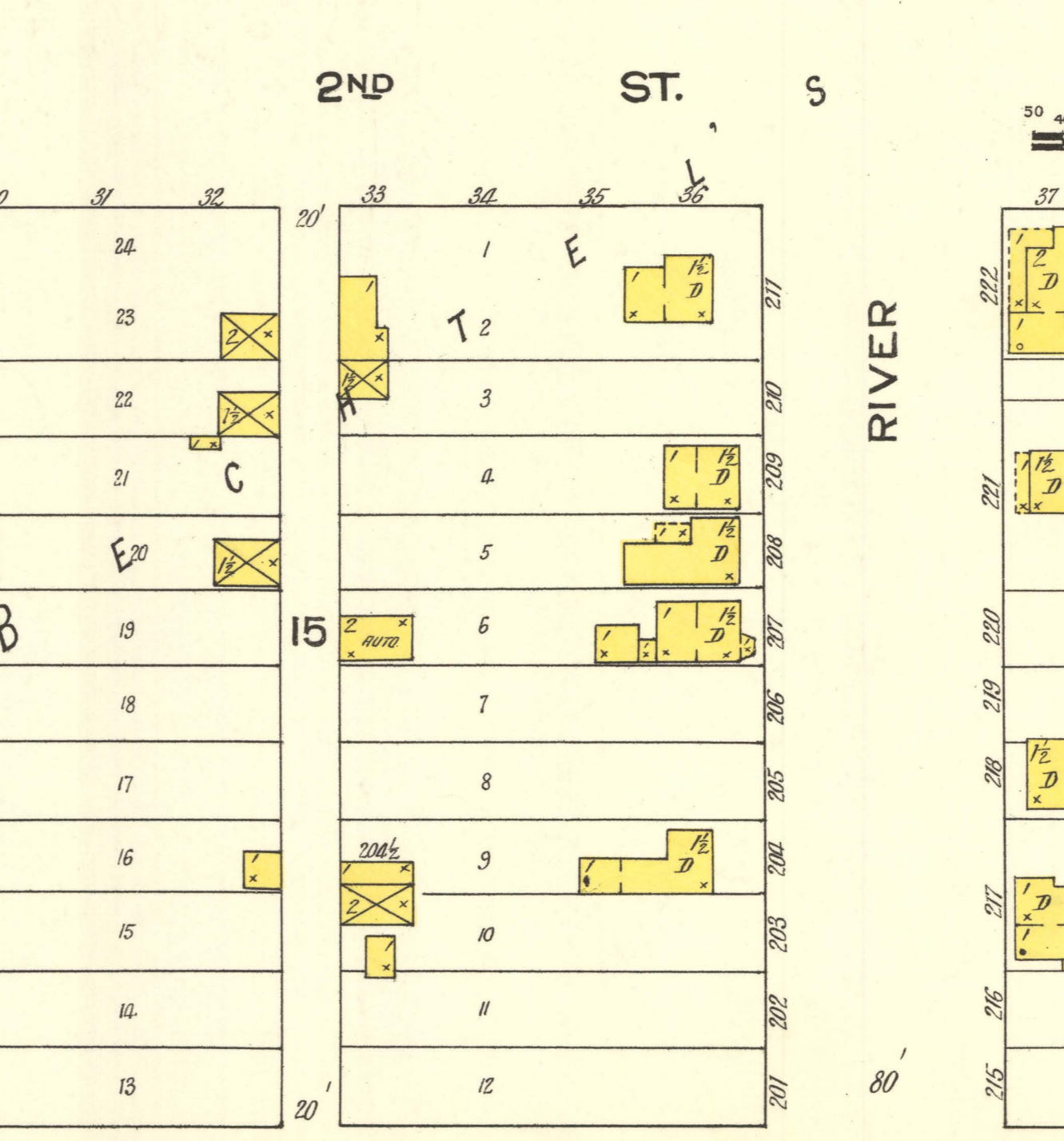
SPECIALS	SHEET	DESCRIPTION	SHEET
	B	Jennings Hotel	8
	B	Baptist Church	2
	B	Bartles Oil Co.	K
	G	Cavalier District School No. 6	L
	1	Milling Co., Mill and Elevator,	1
	1	Potato House	L
	2	Chronicle, Printing	8
	2	City Hall	8
	2	County Court House and Jail	8
	F	Fire Department	8
	2	French & Thompson, Elevator	8
	G	German Evangelical Church	8
	1	G. N. R. R. Depot	8
	I	International Elevator Co.	8
	2	Standard Oil Co.	8
	J	Jail	8
	2	Krippner, O. A., Ice Cream Factory, &c.	8
	K	Lang, J., Electric Plant	1
	L	Methodist Episcopal Church	8
	O	Opera House	8
	P	Post Office	8
	8	Presbyterian Church	8
	R	Robertson Lumber Co.	2
	2	St. Bridget's Roman Catholic Church	2
	2	State Elevator Co.	2



3



2



3

