



12-1907

## Cavalier, 1907

Sanborn Map Company

[How does access to this work benefit you? Let us know!](#)

Follow this and additional works at: <https://commons.und.edu/sanborn-maps>

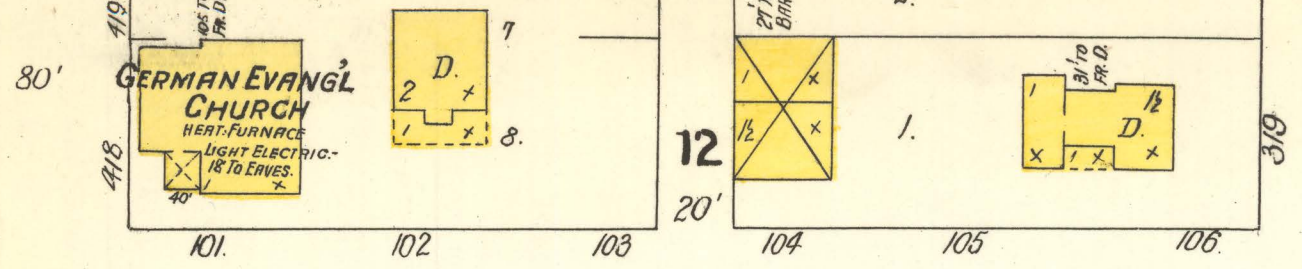
---

### Recommended Citation

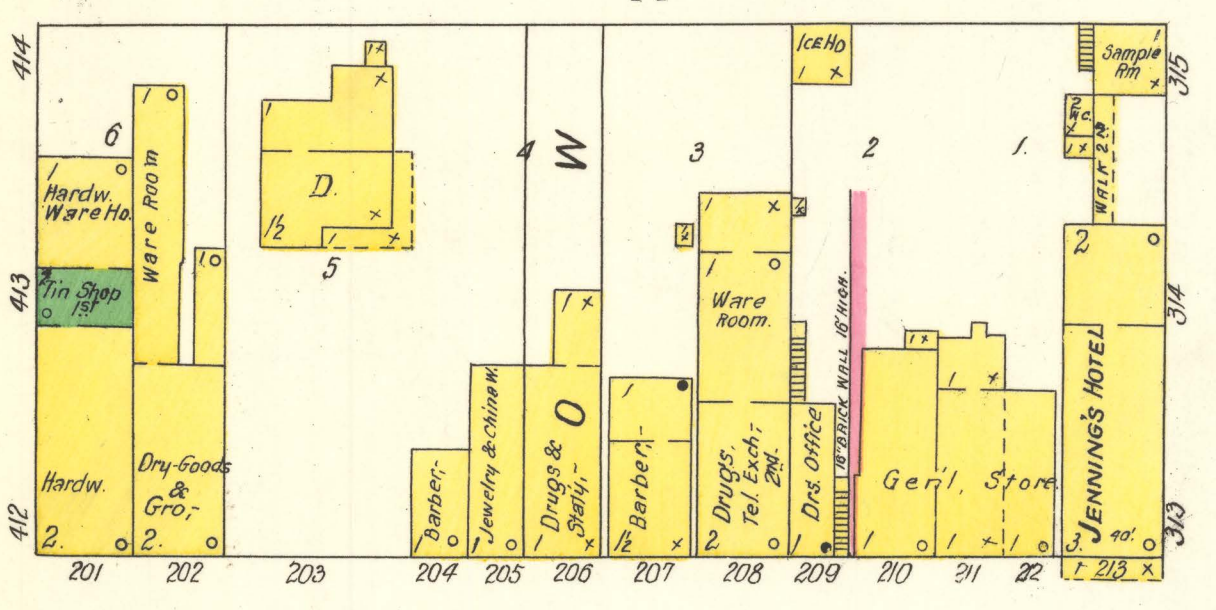
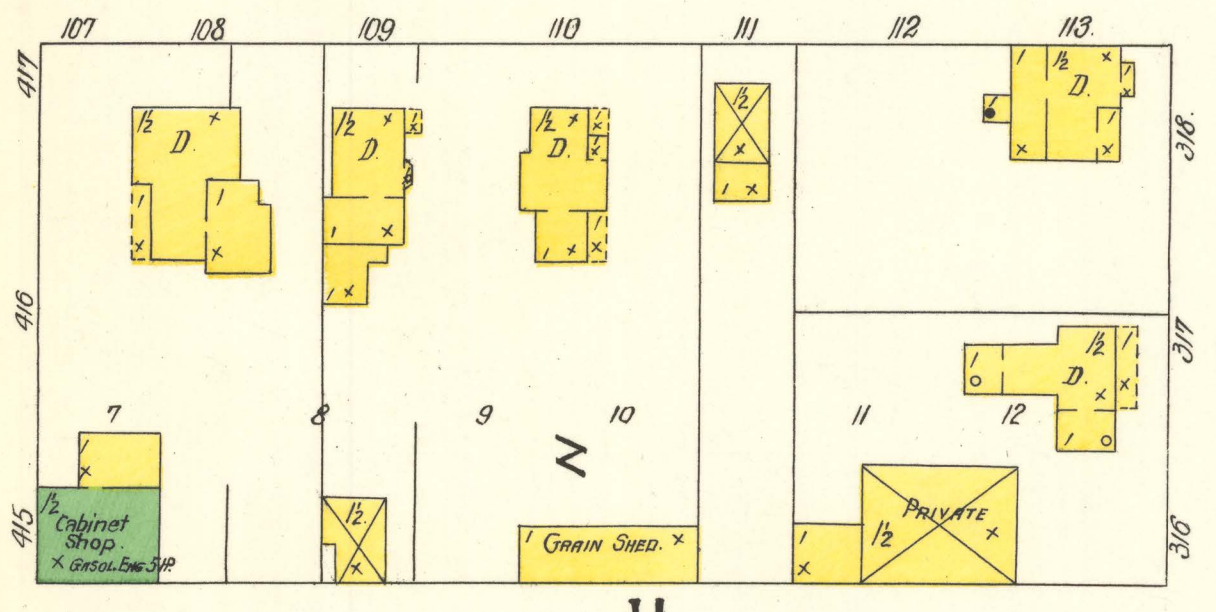
Sanborn Map Company, "Cavalier, 1907" (1907). *Sanborn Maps of North Dakota*. 41.  
<https://commons.und.edu/sanborn-maps/41>

This Book is brought to you for free and open access by the Elwyn B. Robinson Department of Special Collections at UND Scholarly Commons. It has been accepted for inclusion in Sanborn Maps of North Dakota by an authorized administrator of UND Scholarly Commons. For more information, please contact [und.common@library.und.edu](mailto:und.common@library.und.edu).

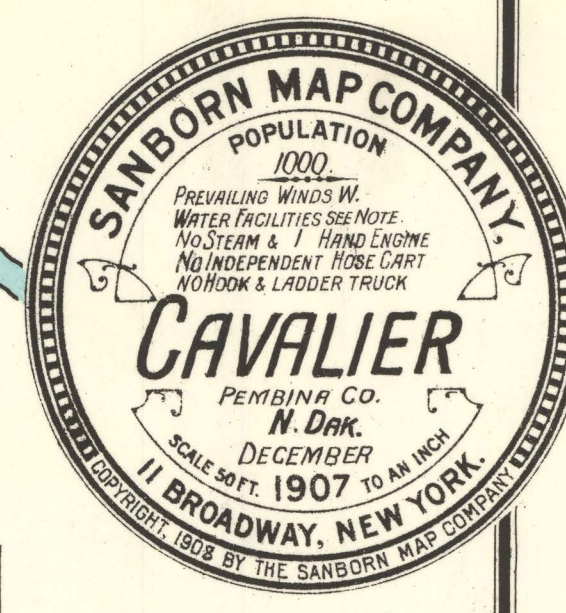
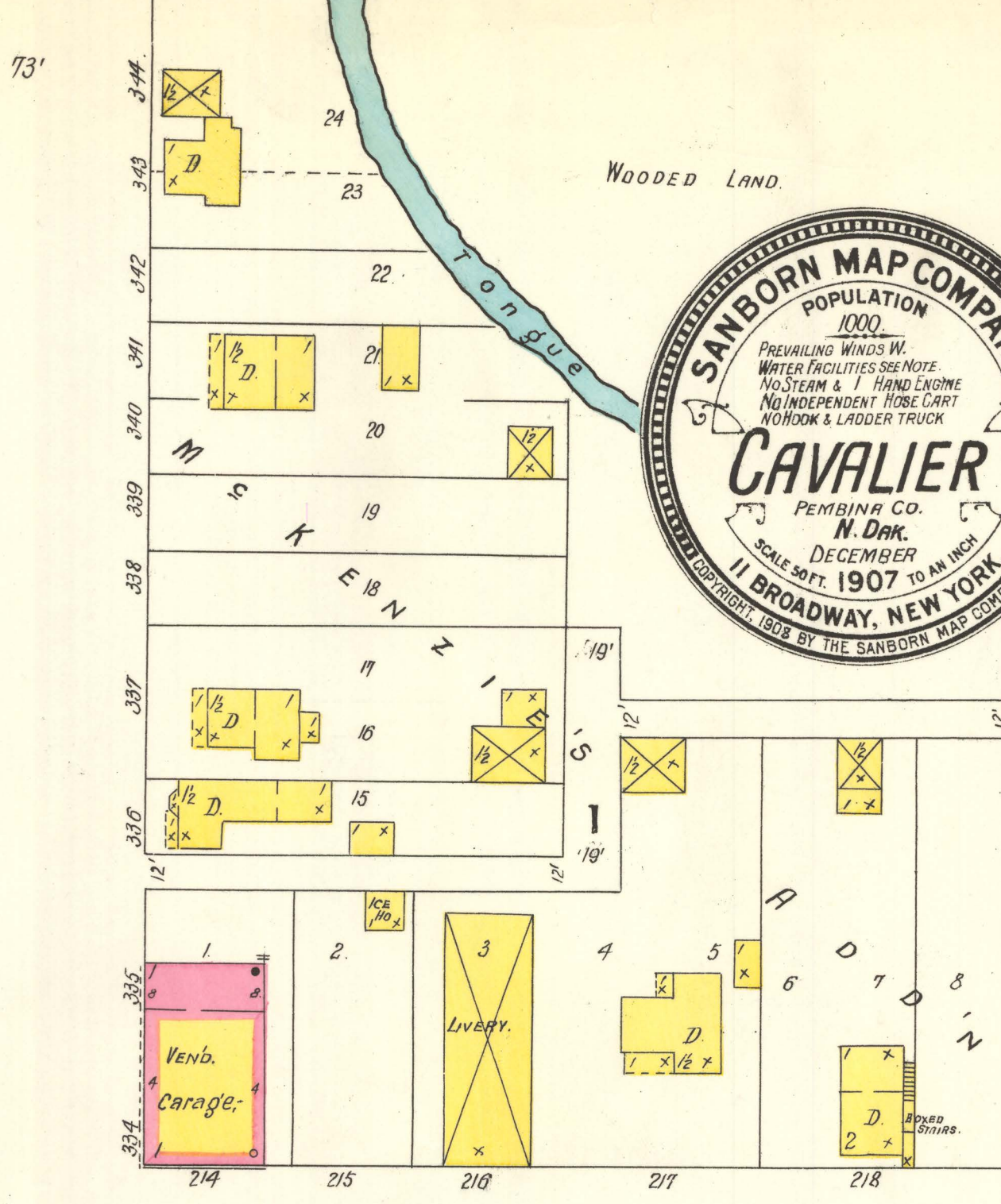
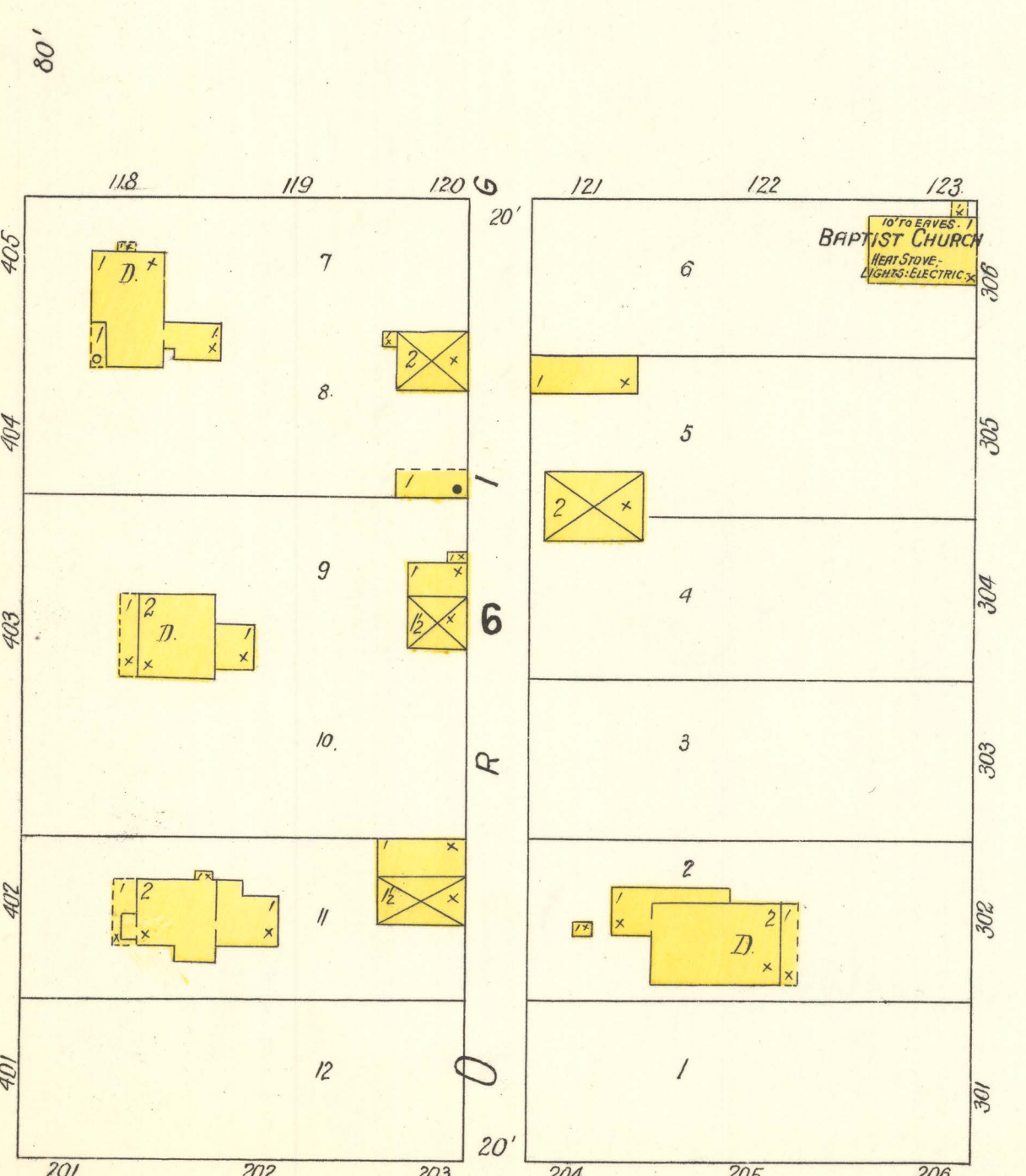
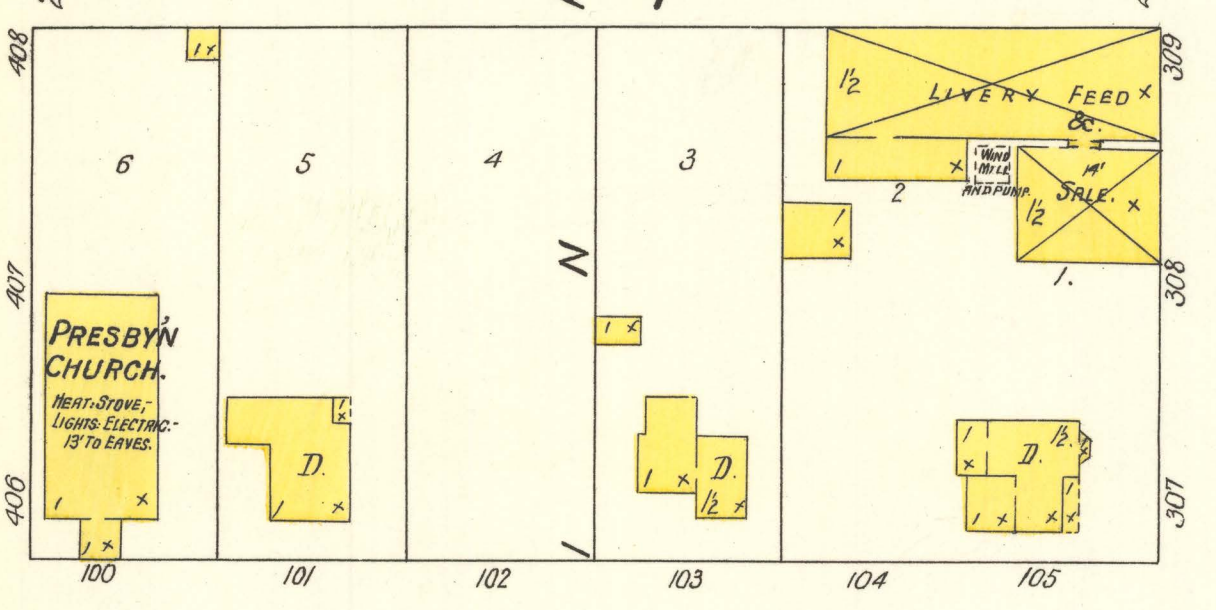
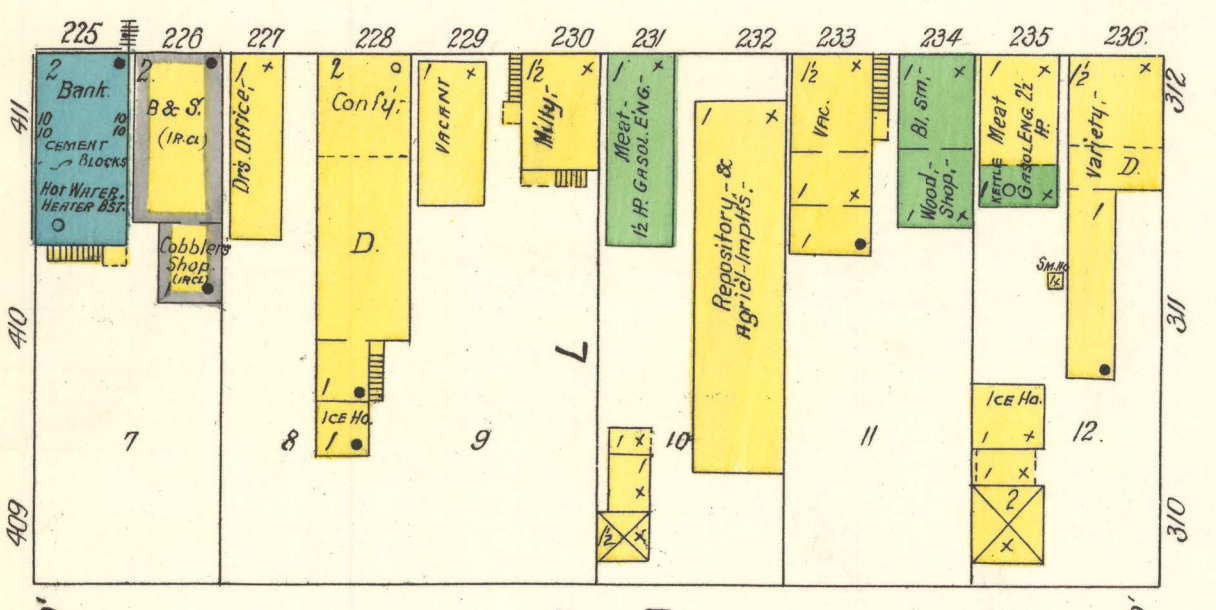




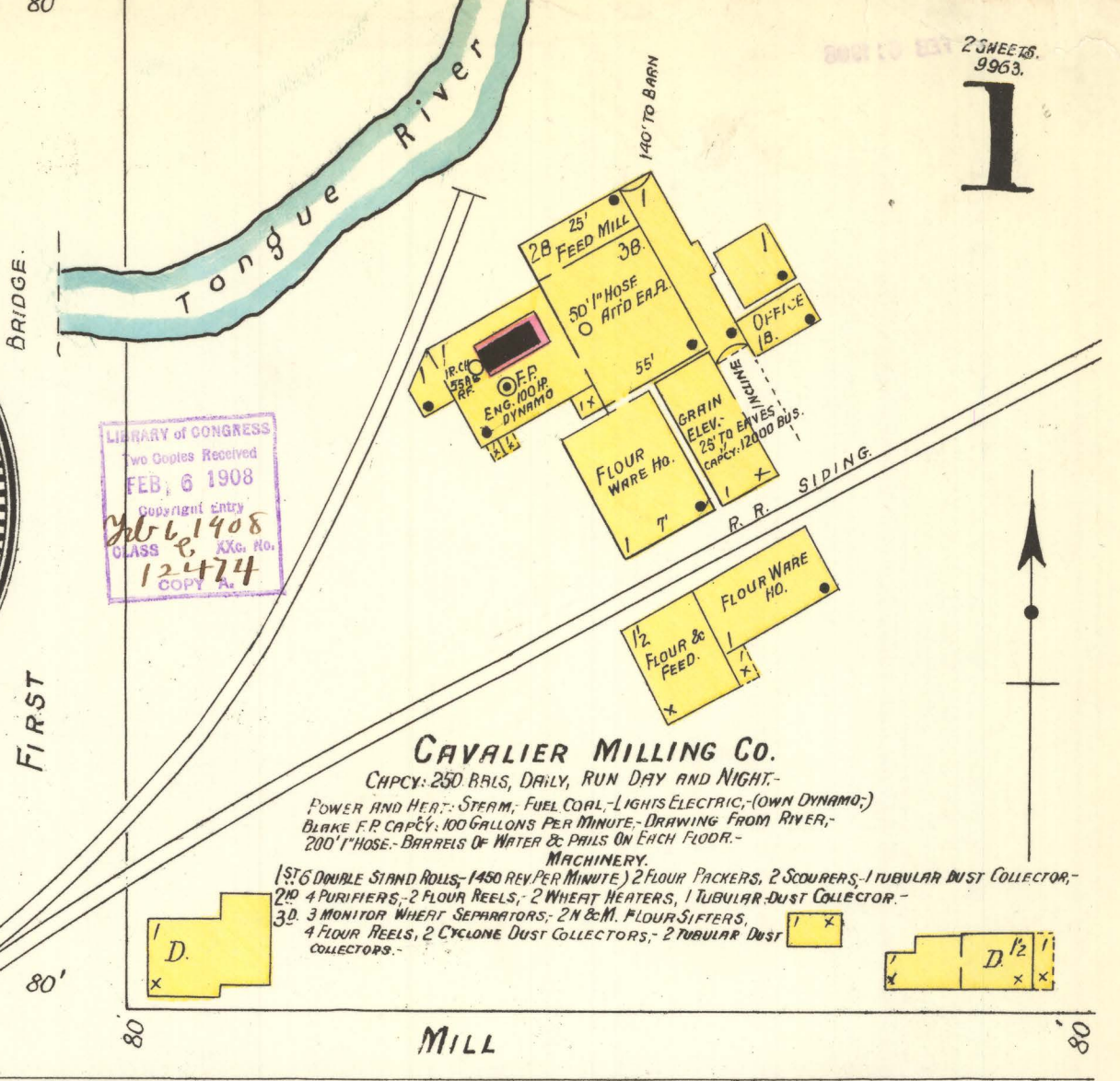
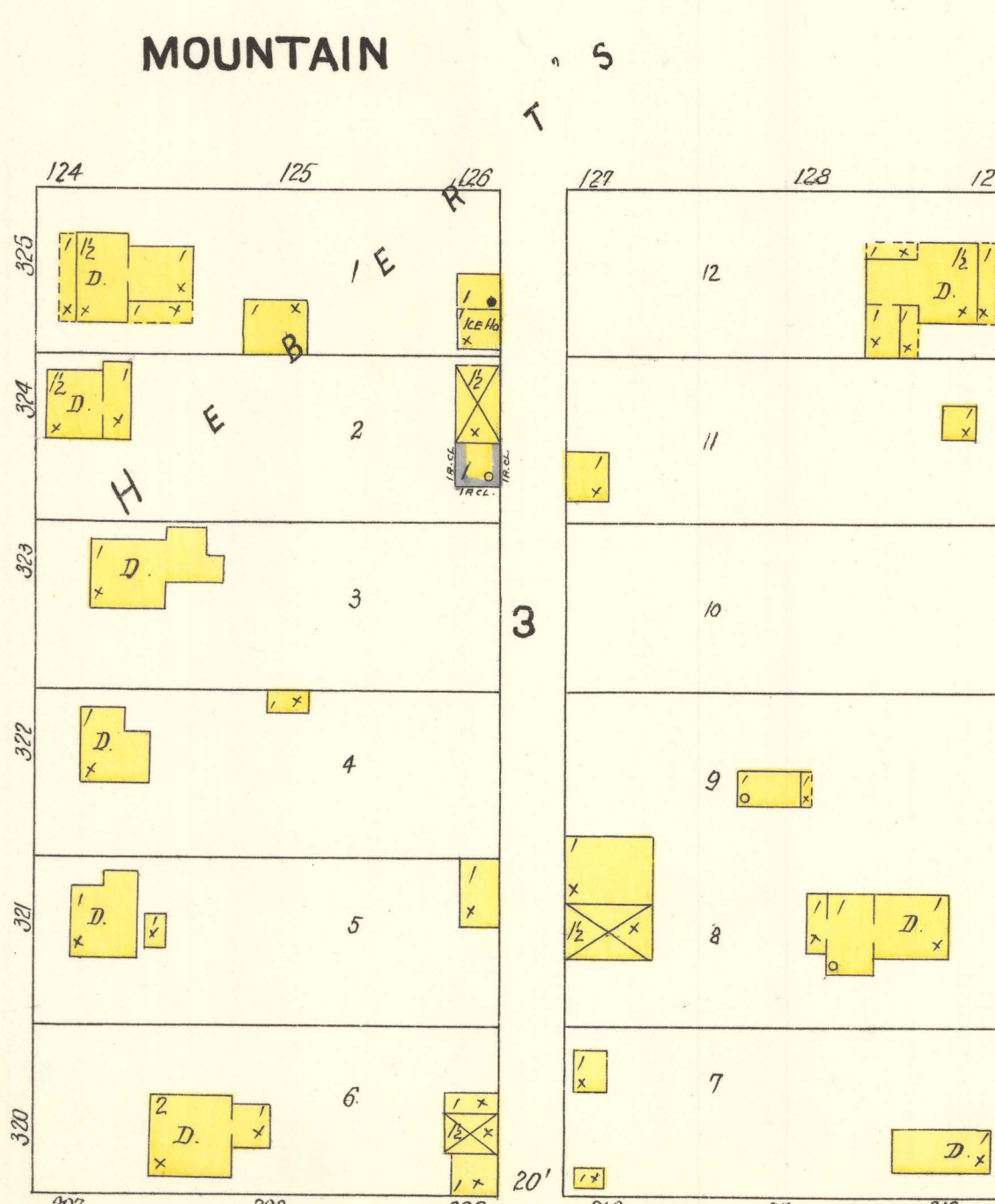
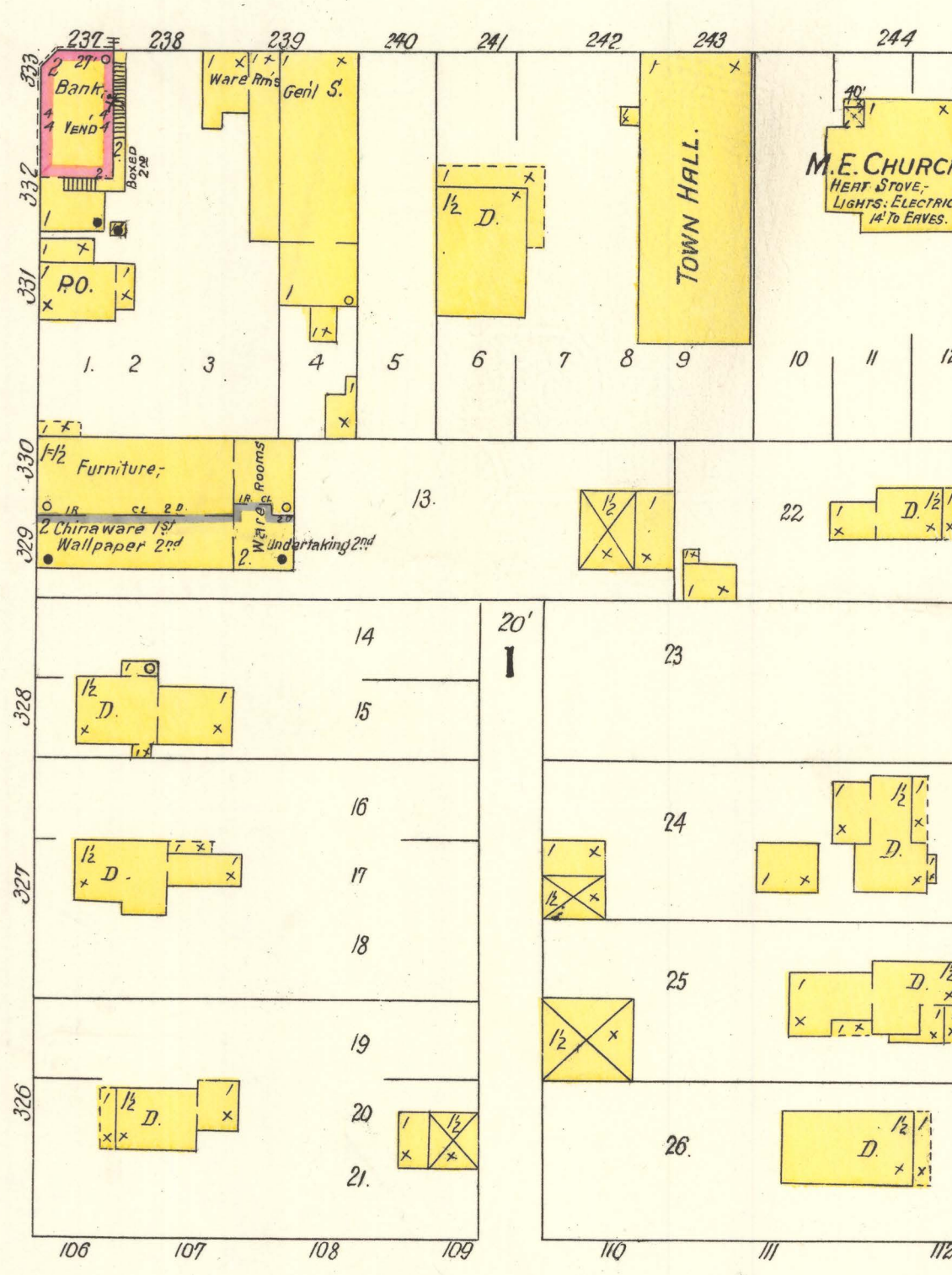
ELIZABETH



MAIN



MAIN

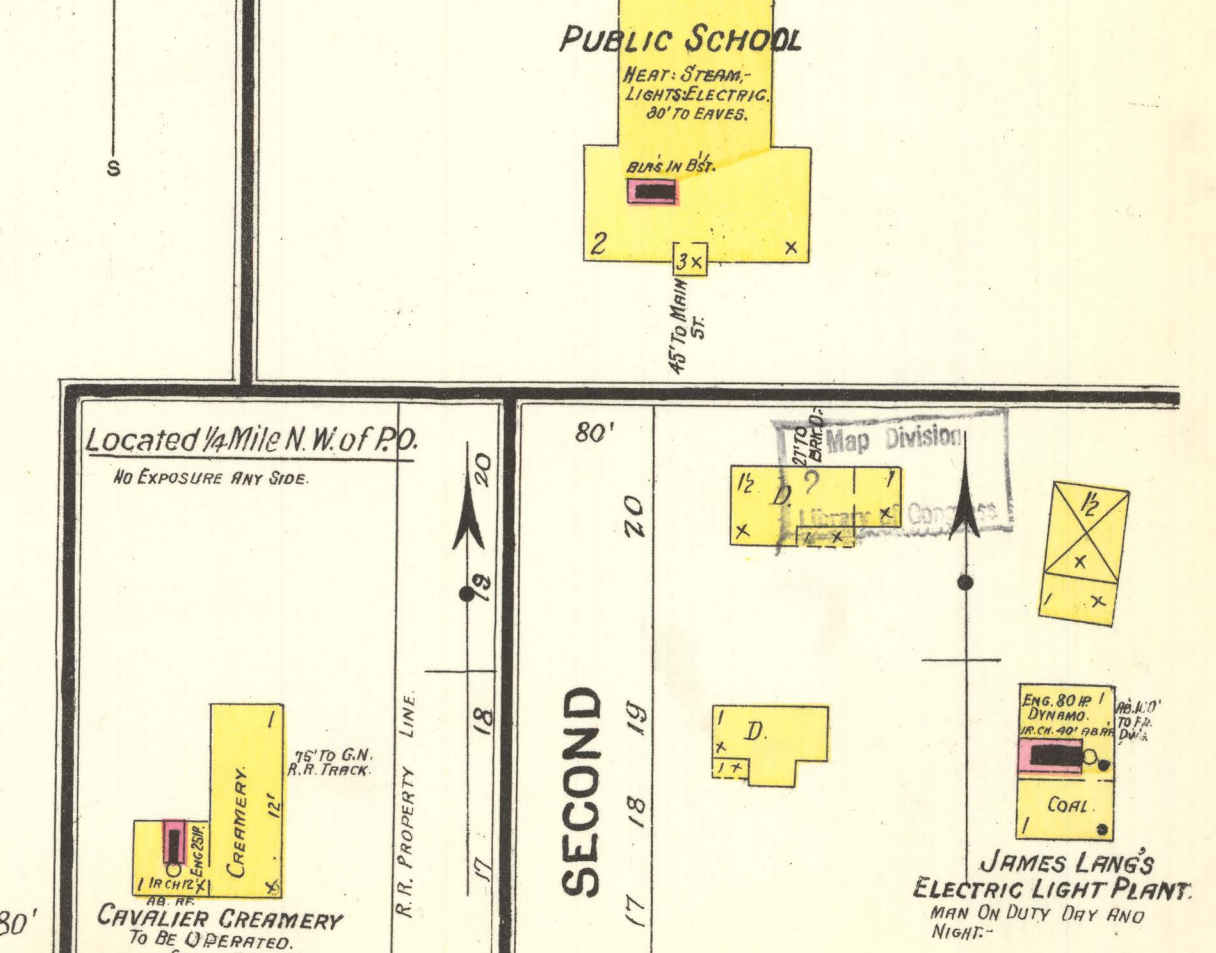
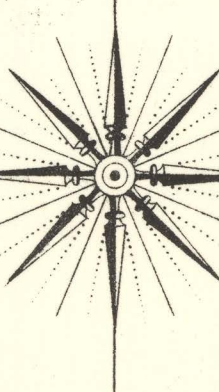
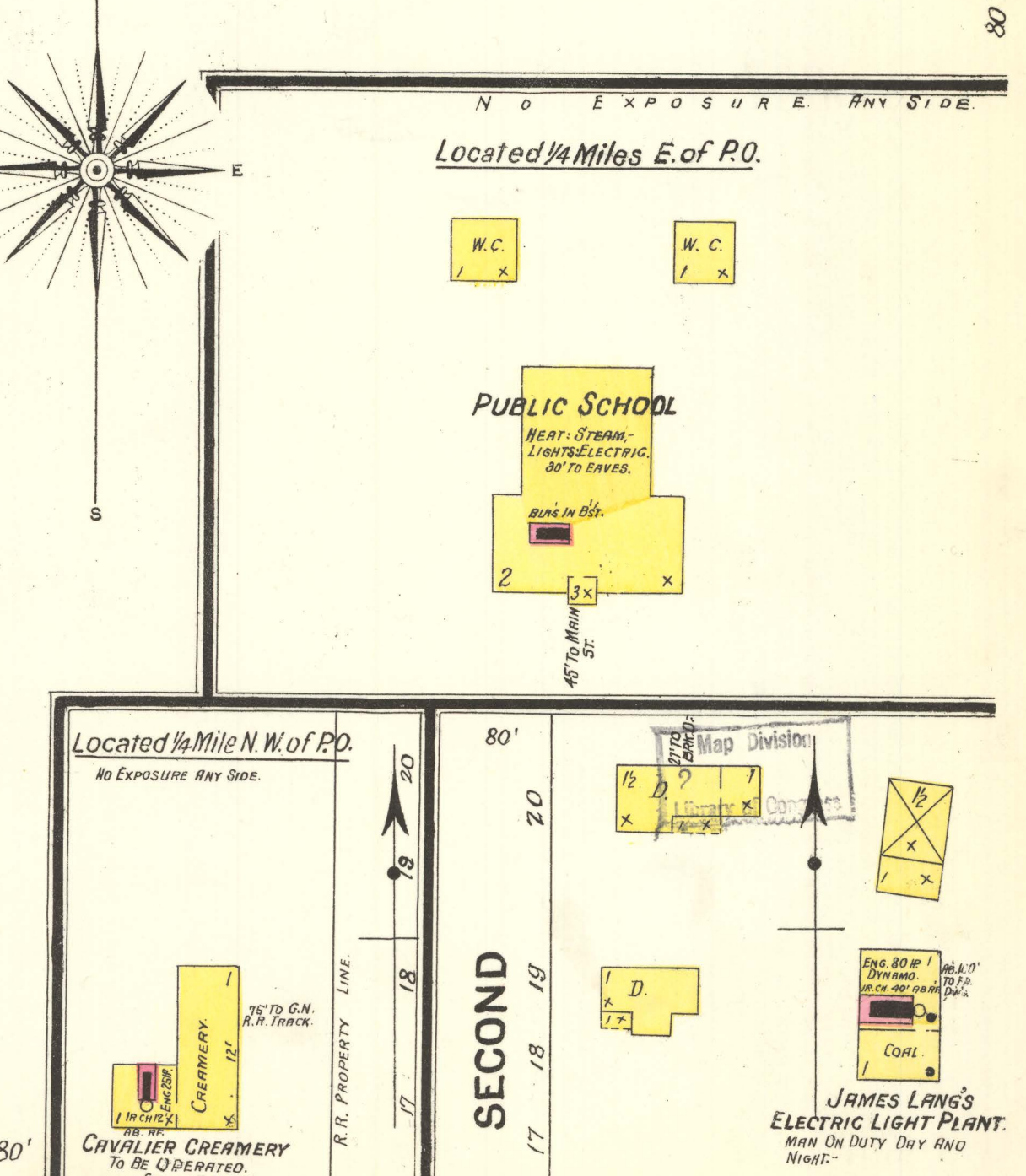
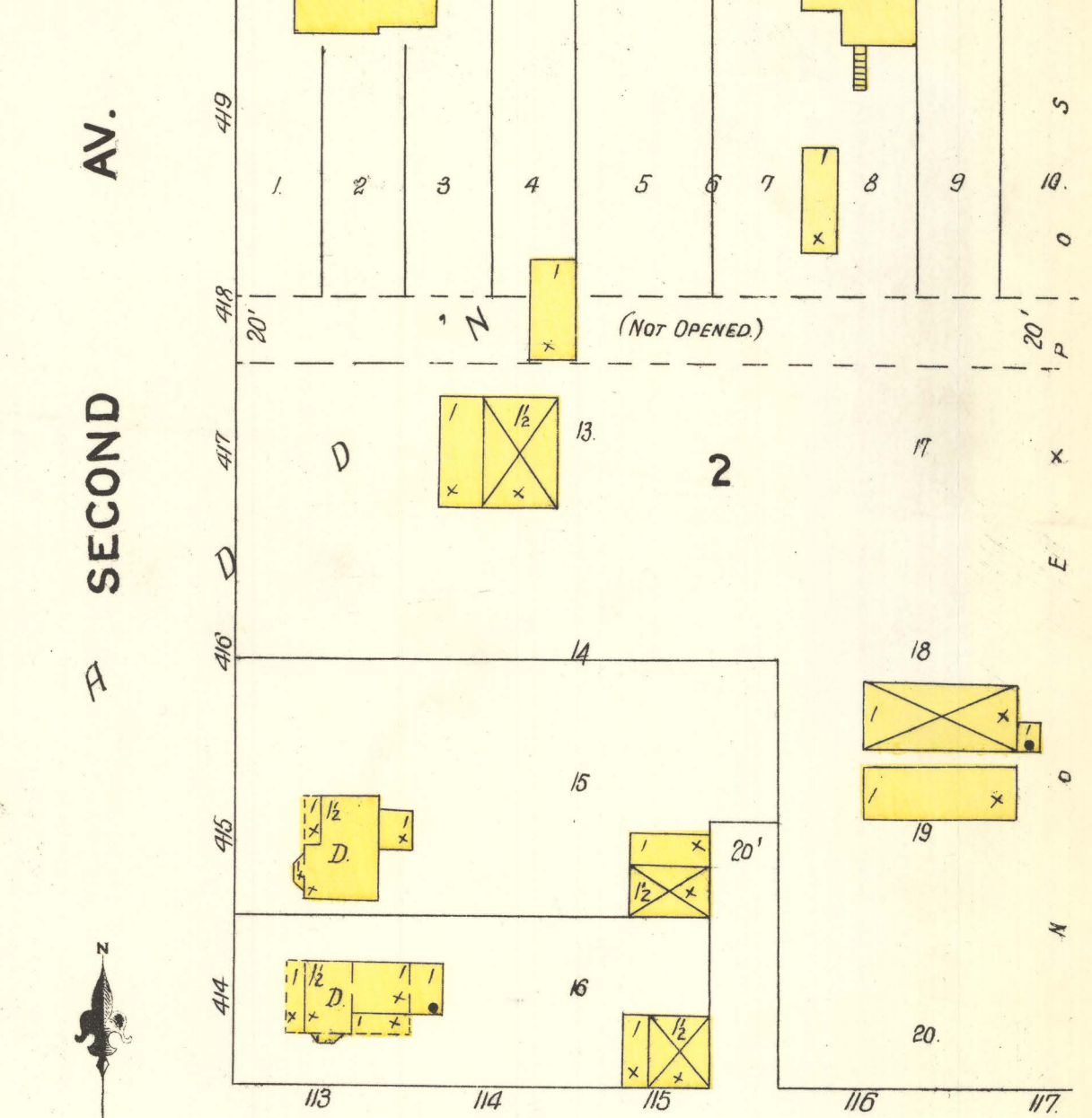


**CAVALIER MILLING CO.**  
CAPCY. 250 BBL. DAILY, RUN DAY AND NIGHT.  
POWER AND HEAT-STEAM, FUEL COAL, LIGHTS-ELECTRIC, (OWN DYNAMO).  
BUNKER 100 GALLONS PER HOUR, DRAWING FROM RIVER.  
200 TONS. BARRIS OF WATER & PAUS ON EACH FLOOR.

MACHINERY:  
156 DOUBLE STAND ROLLS, 1450 REV. PER MINUTE; 2 FLOUR PACKERS, 2 SCOURERS, 1 RUBBER ROLL COLLECTOR;  
210 4 POUNDERS, 2 FLOUR REELS, 2 WHEAT BEATERS, 1 FLOUR DUST COLLECTOR;  
30 3 MONITOR WHEAT SEPARATORS, 2 N. M. FLOUR SIFTERS,  
4 FLOUR REELS, 2 CYCLONE DUST COLLECTORS, 2 POUNDING DUST COLLECTORS.

**WATER FACILITIES:**  
Water supply from 1400 Bbl. Cistern, Private Wells and River.

**FIRE DEPT.:** Volunteer 24 Men, 1 Waterous fire Engine  
2 Hose Carts, 2000 2 1/2" Cotton Hose in good condition, Grades level, Public lights electric.

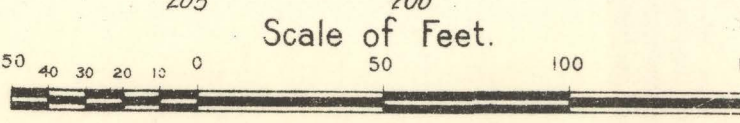


DIVISION

AV. SECOND

MOUNTAIN

DAKOTA



2 SHEETS  
5953.