



8-1909

Carrington, 1909

Sanborn Map Company

[How does access to this work benefit you? Let us know!](#)

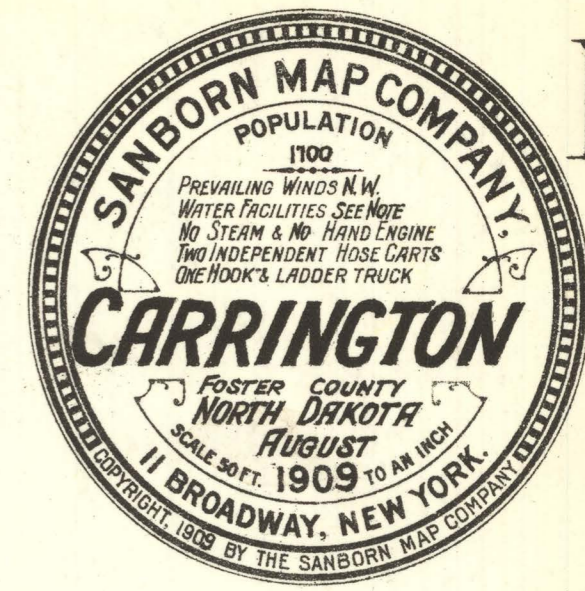
Follow this and additional works at: <https://commons.und.edu/sanborn-maps>

Recommended Citation

Sanborn Map Company, "Carrington, 1909" (1909). *Sanborn Maps of North Dakota*. 34.
<https://commons.und.edu/sanborn-maps/34>

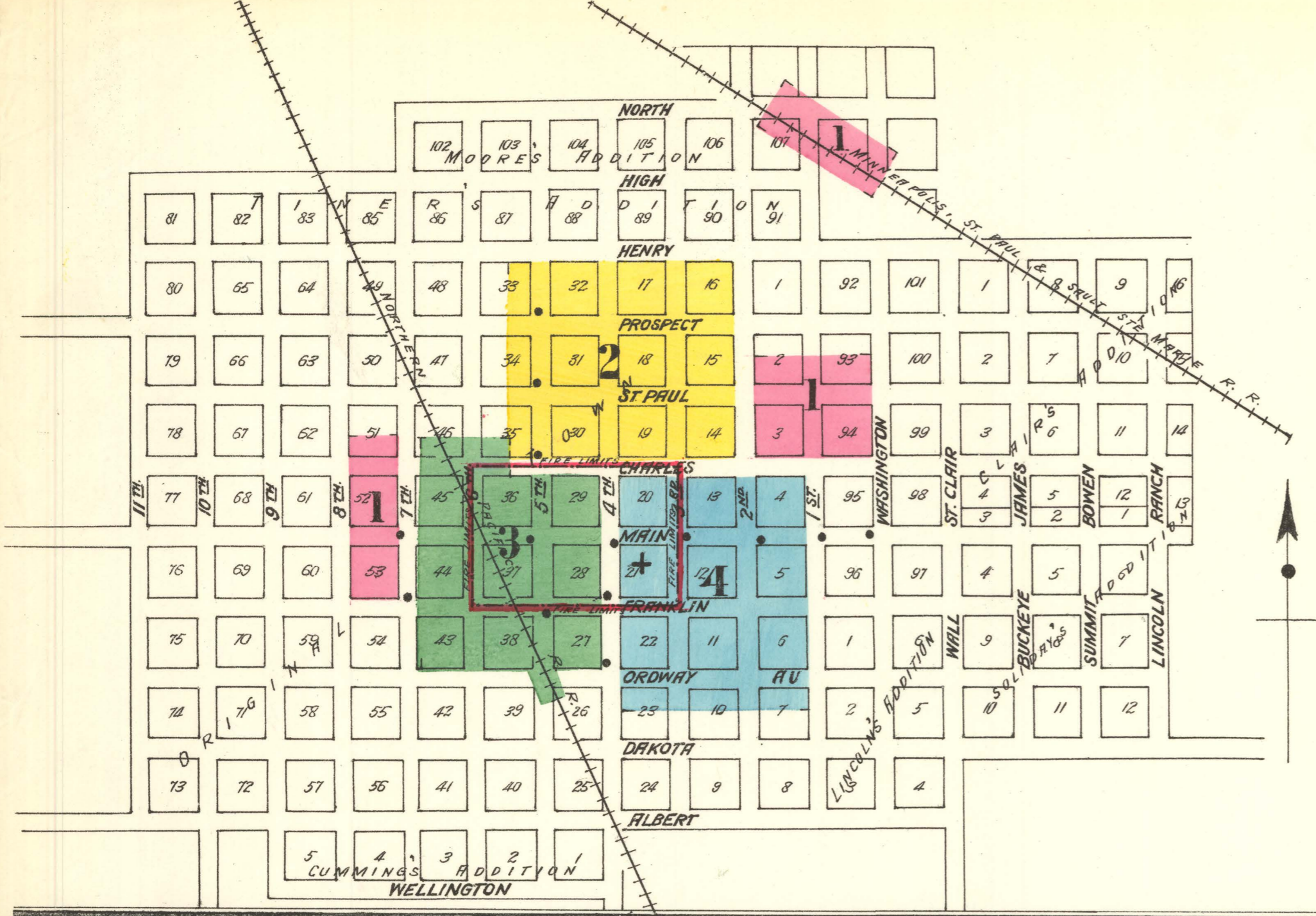
This Book is brought to you for free and open access by the Elwyn B. Robinson Department of Special Collections at UND Scholarly Commons. It has been accepted for inclusion in Sanborn Maps of North Dakota by an authorized administrator of UND Scholarly Commons. For more information, please contact und.common@library.und.edu.

Copyright 1909
of No. 17190
SEP 17 1909



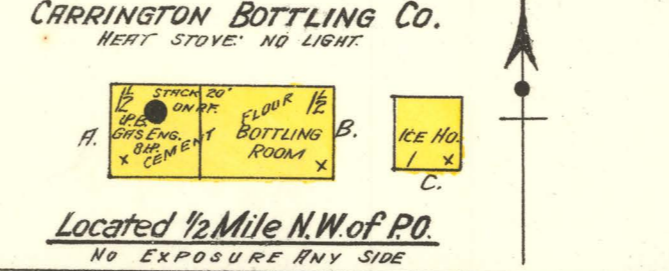
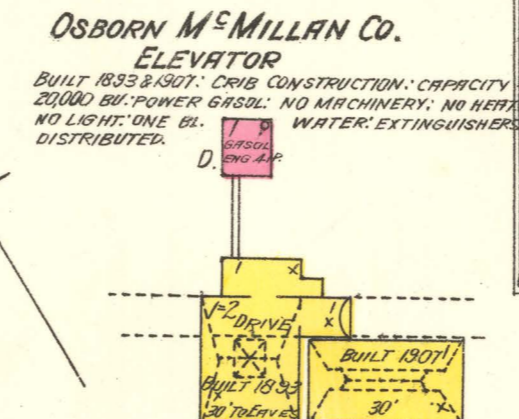
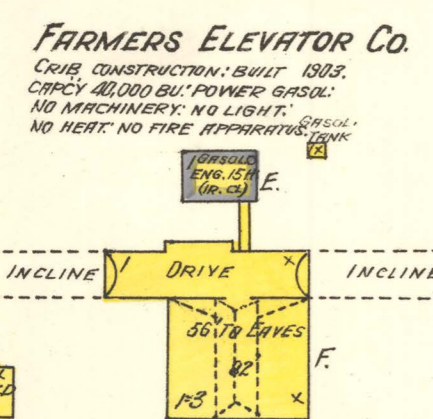
INDEX.

SPECIALS.	SHEET	J	SHEET
Andrews Grain Co.,	3	Johnson, A. T., Lumber Yard,	3
Carrington Bottling Co.,	1	Kirkwood House,	3
Steam Laundry,	4	M	
Case, J. I., Warehouse,	3	Methodist Episcopal Church,	4
City Water Works,	2	M. St. P. & S. S. M. R. R. Depot,	1
Congregational Church,	2	Monarch Hotel,	1
Consolidated Elevator Co.,	3	N	
County Court House and Jail,	3	N. P. R. R. Freight House,	3
D		O	
Dunkard Churches,	2	Opera House,	3
E		Osborn, McMillan Co., Elevator,	1
Electric Theatre,	4	P	
F		Post Office,	3
Farmers' Elevator Co.,	1	Public Schools,	3
Fire Department,	4	Putnam, T. N., Lumber Shed,	3
G		S	
Guslander Hotel,	3	Sacred Heart Catholic Church,	4
H		W	
Hammer-Halvorson-Beier Elevator Co.,	3	Western Elevator Co., Light Plant	3



WATER FACILITIES.
Gravity system: Water supply from driven well, 200' deep by Fairbanks-Morse compressed air pump, size 8"x8", capacity 30 gallons per minute. Iron stand pipe 8"x8" capacity 400,000 gallons, on level with town domestic pressure 39 lbs. Average daily consumption 25,000 gals. 3' dia. 4" water mains & 1500' of 6" water mains, both laid in 1908; 13 triple hydrants.

FIRE DEPARTMENT.
Organized volunteer co. 35 members: one Motorous gasoline engine; two 45 gallon chemical tanks on hand carts; two hand hose reels; one hook & ladder truck; 30 ladders; 500' 2 1/2" cotton jacket hose; fire alarm by bell; public lights electric; grades level; streets not paved.



KEY

- FIRE WALL ON ABV. ROOF
- METAL CORNICE
- EXPOSED TO WIND
- FIRE WALL ON ABV. ROOF
- WOOD CORNICE
- FIRE WALL 18 IN. ABV. ROOF
- FRAME PARTITION
- OPENING WITH IRON DOOR
- STANDARD
- WINDOW & IRON SHUTTERS
- WINDOW - 1ST STORY
- WINDOW 10' & 3" STORIES
- 29' & 4 1/2'

STABLES
BUILDINGS COLORED YELLOW ARE FRAME
RED BRICK
BLUE STONE
GRAY IRON
BROWN ADDBR
GREEN SPECIALS

(S) INDICATE RELATIVE HEIGHTS.
FIRE STATION, AS SHOWN ON KEY MAP.
ALTERNATE STREET NUMBERS ARE ACTUAL.
CONSECUTIVE STREET NOS ARE ARBITRARY.

