



10-1907

Carrington, 1907

Sanborn Map Company

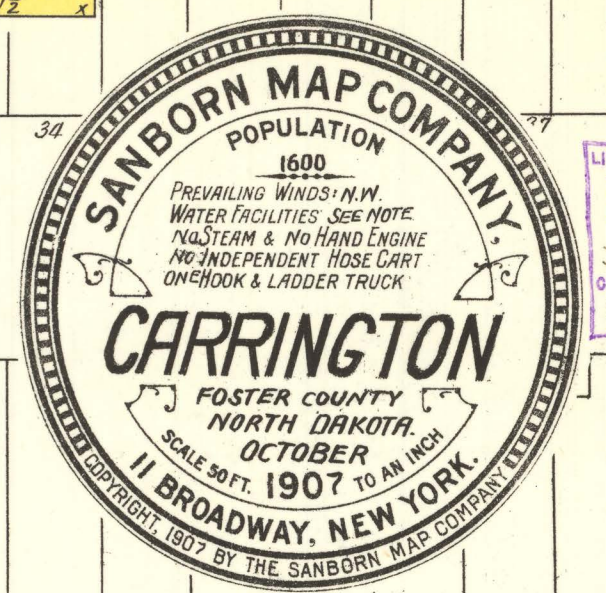
[How does access to this work benefit you? Let us know!](#)

Follow this and additional works at: <https://commons.und.edu/sanborn-maps>

Recommended Citation

Sanborn Map Company, "Carrington, 1907" (1907). *Sanborn Maps of North Dakota*. 35.
<https://commons.und.edu/sanborn-maps/35>

This Book is brought to you for free and open access by the Elwyn B. Robinson Department of Special Collections at UND Scholarly Commons. It has been accepted for inclusion in Sanborn Maps of North Dakota by an authorized administrator of UND Scholarly Commons. For more information, please contact und.common@library.und.edu.



WATER FACILITIES: 30' turns with Hand Fire Pumps.
 100 barrel Cistern on Lot 20 Block 28.5 F. Filled by Gasoline
 Pump from Artesian Well to be Erected on Block 35 with
 Several Hyds. in Business Section.
 FIRE DEPARTMENT: Volunteer Co. About 20 Men.
 Apparatus: 2x4 Fire Eng. 1 H. & L. Truck. Hose Cart 2000' 1/2"
 Hose. 2 Chemicals.
 Streets not Paved. Public Light. Electric.

Map Division
 JAN 17 1908
 Library of Congress

LIBRARY OF CONGRESS
 Two Copies Received
 JAN 6 1908
 Geography
 North America
 Class X. 336. No.
 177 Copy B. 1

SIXTH

CHARLES

MAIN

FIFTH

E. FRANKLIN

SIXTH

W. FRANKLIN

ST. PAUL

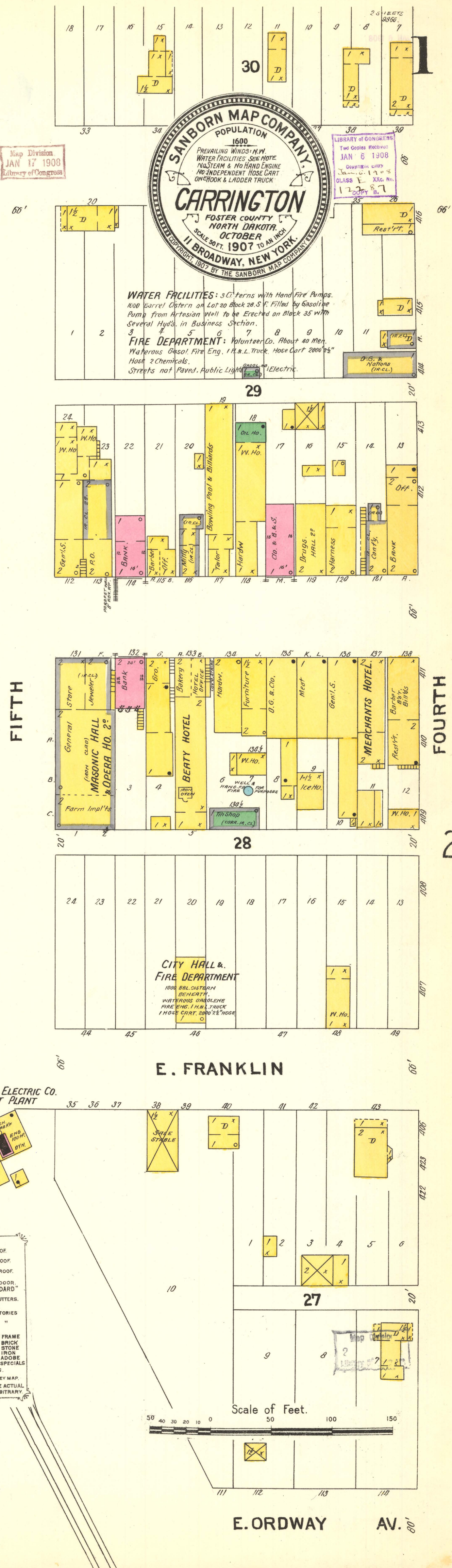
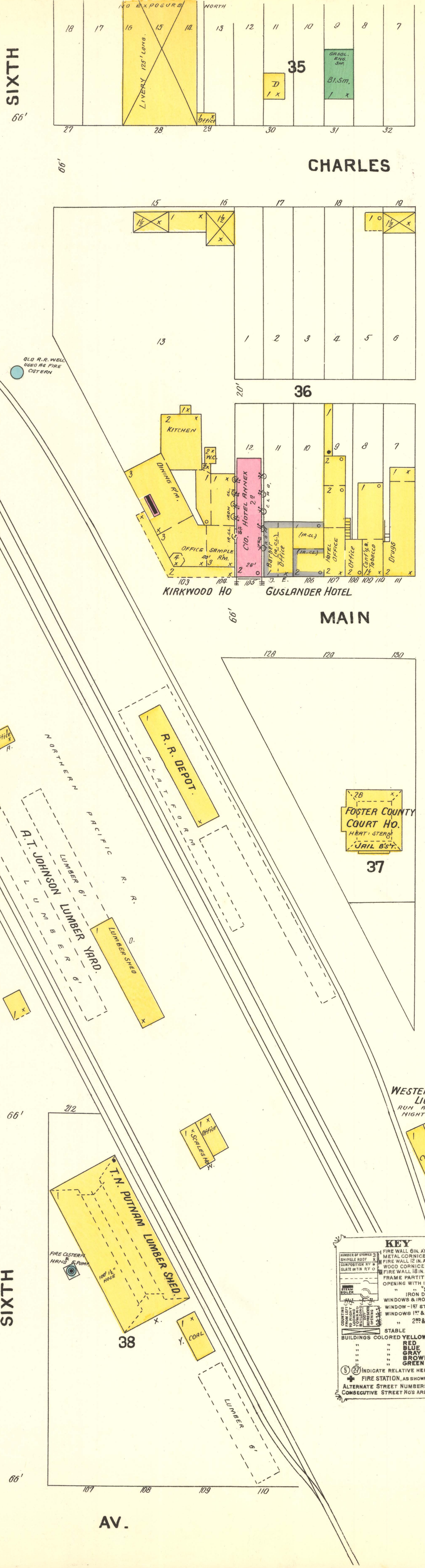
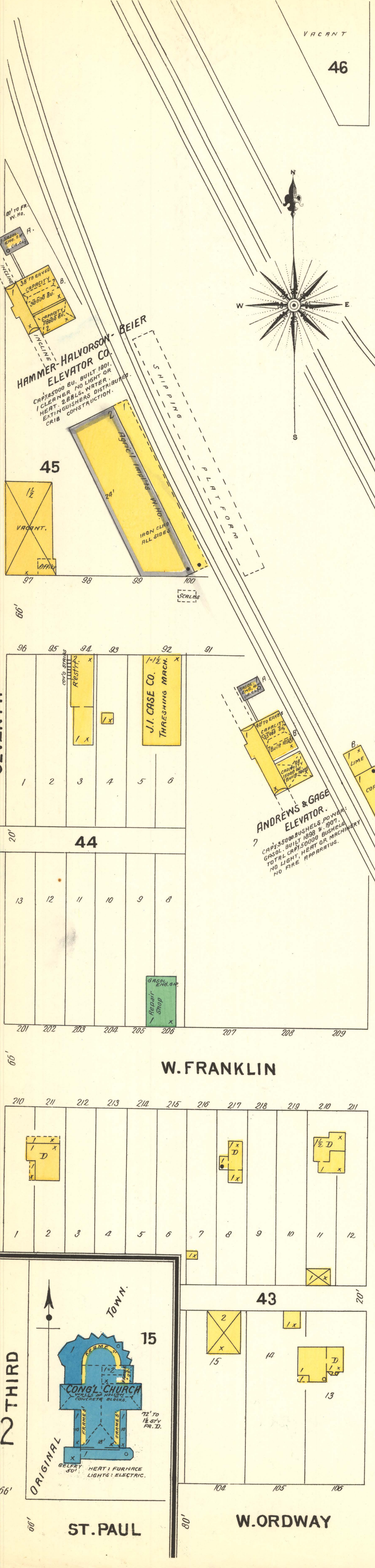
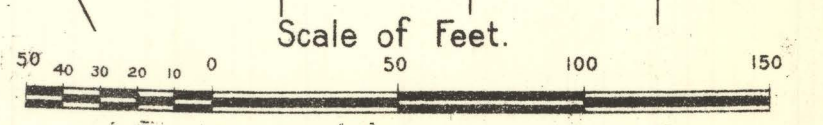
W. ORDWAY

AV.

E. ORDWAY

AV.

KEY
 FIRE WALL 6 IN. ASB. ROOF
 METAL CORNICE
 FIRE WALL 12 IN. ASB. ROOF
 WOOD CORNICE
 FIRE WALL 12 IN. ASB. ROOF
 FRAME PARTITION
 OPENING WITH IRON DOOR
 STANDARD
 IRON DOOR
 WINDOWS & IRON SHUTTERS
 WINDOW - 1ST STORY
 WINDOWS 1ST & 2ND STORIES
 2ND & 4TH "
 STABLE
 BUILDINGS COLORED YELLOW ARE FRAME
 RED BRICK
 BLUE STONE
 GRAY IRON
 BROWN ASBESTOS
 GREEN SPECIALS
 (S) INDICATE RELATIVE HEIGHTS
 * FIRE STATION, AS SHOWN ON KEY MAP
 ALTERNATE STREET NUMBERS ARE ACTUAL
 CONSECUTIVE STREET NOS ARE ARBITRARY



HAMMER-HALVORSON BEIER ELEVATOR CO.
 CAPAS 5000 BU. BUILT 1901.
 CLEARER. NO LIGHT OR
 HEAT. 2 BBLG. WATER.
 EXTRA GUISHING. DISTRI-
 BUTION. CRIB CONSTRUCTION.

ANDREWS & GAGE ELEVATOR.
 CAPAS 5000 BUSHELS. NO WARE.
 GASOL. BUILT 1888 & 1907.
 TOTAL CAPAS 5000 BUSHELS.
 NO LIGHT. HEAT OR MACHINERY.
 NO FIRE ARRANGING.

CONG. CHURCH
 72' TO
 78' 2 1/2' H. H. P. D.

T.N. PUTNAM LUMBER SHED.

WESTERN ELECTRIC CO. LIGHT PLANT
 RUN ALL NIGHT

CITY HALL & FIRE DEPARTMENT
 100' BELL DISTANCE
 DEPARTMENT
 WATERING SINGLE
 FIRE ENG. 1 H. & L. TRUCK
 1 HOSE CART 1000' 1/2" HOSE