



10-1904

Carrington, 1904

Sanborn Map Company

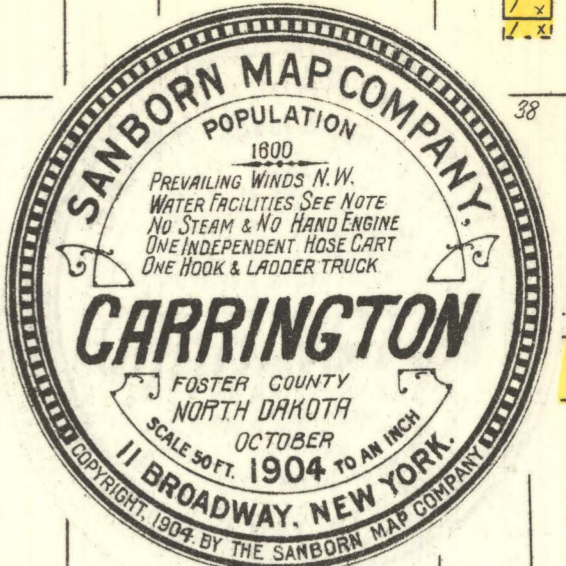
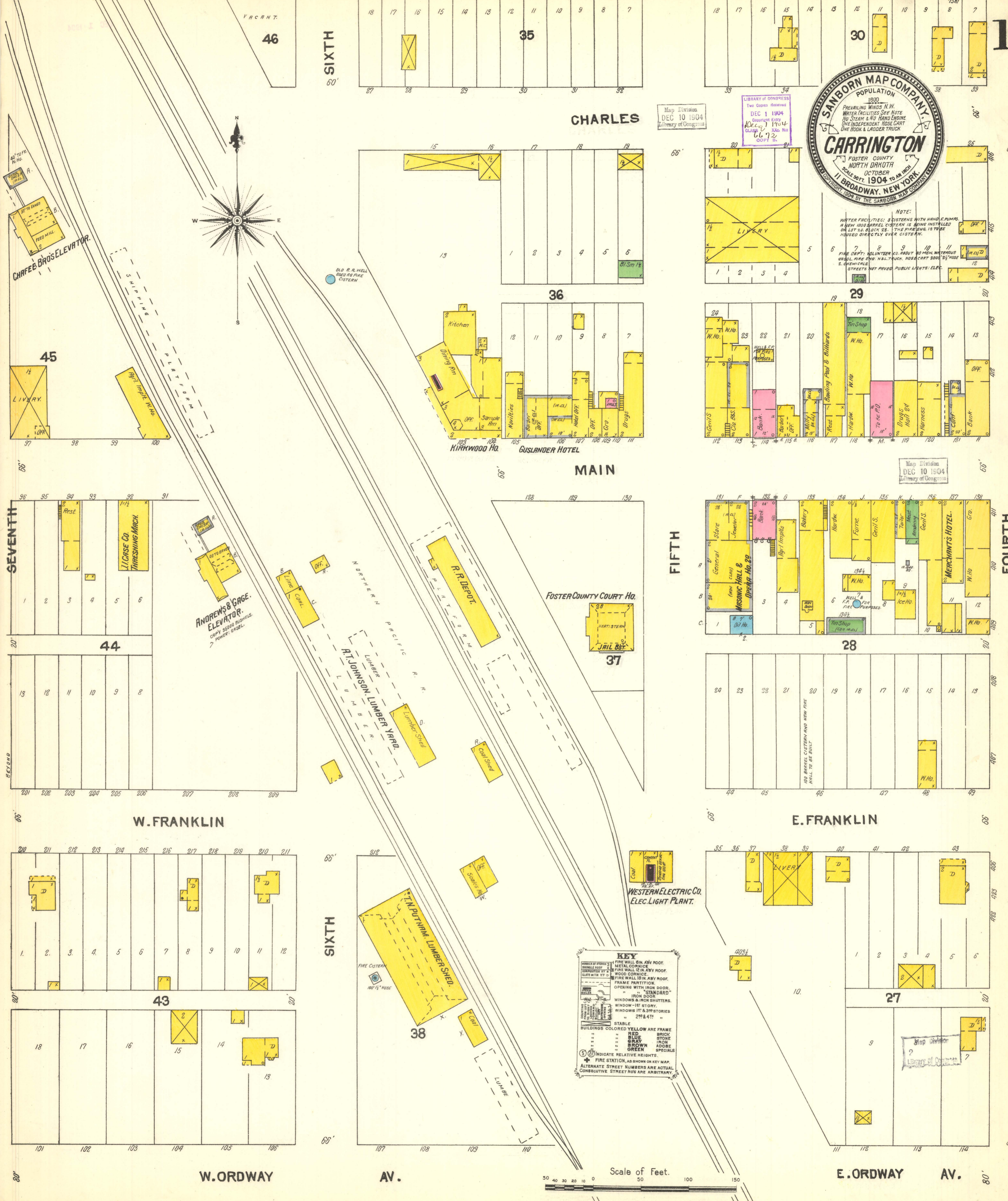
[How does access to this work benefit you? Let us know!](#)

Follow this and additional works at: <https://commons.und.edu/sanborn-maps>

Recommended Citation

Sanborn Map Company, "Carrington, 1904" (1904). *Sanborn Maps of North Dakota*. 36.
<https://commons.und.edu/sanborn-maps/36>

This Book is brought to you for free and open access by the Elwyn B. Robinson Department of Special Collections at UND Scholarly Commons. It has been accepted for inclusion in Sanborn Maps of North Dakota by an authorized administrator of UND Scholarly Commons. For more information, please contact und.common@library.und.edu.



Map Division
DEC 10 1904
Library of Congress

LIBRARY OF CONGRESS
Two Copies Received
DEC 1 1904
Copyright Entry
CLIPPER, Vol. No. 1
COPY 15

NOTE:
WATER FACILITIES: 8 CISTERNS WITH HAND C. PUMPS
& NEW 100 BARREL CISTERNS IS BEING INSTALLED
ON LOT 20, BLOCK 28. THE FIRE ENGINE IS TO BE
HOUSED DIRECTLY OVER CISTERNS.
FIRE DEPT: VOLUNTEER CO. ABOUT 70 MEN. WATER TOWER
ORIG. FIRE ENG. H.S.L. TRUCK. HOSE CART 2000' 2 1/2" HOSE
2. CHEMICALS
STREETS NOT PAVED. PUBLIC LIGHTS: ELEC.

Map Division
DEC 10 1904
Library of Congress

KEY
 FIRE WALL, EIM, ABBY ROOF
 METAL CORNICE
 FIRE WALL, EIM, ABBY ROOF
 WOOD CORNICE
 FIRE WALL, EIM, ABBY ROOF
 FRAME PARTITION
 OPENING WITH IRON DOOR
 "STANDARD"
 IRON DOOR
 WINDOWS & IRON SHUTTERS
 WINDOW - 1ST STORY
 WINDOWS 1ST & 2ND STORIES
 2ND & 4TH
 STABLE
 BUILDINGS COLORED YELLOW ARE FRAME
 RED BRICK
 BLUE STONE
 GRAY IRON
 BROWN ADORNE
 GREEN SPECIALS
 (S) INDICATE RELATIVE HEIGHTS.
 FIRE STATION, AS SHOWN ON KEY MAP.
 ALTERNATE STREET NUMBERS ARE ACTUAL
 CONSECUTIVE STREET NOS ARE ARBITRARY.

Scale of Feet.
50 40 30 20 10 0 50 100 150

SIXTH
60'

CHARLES

MAIN

FIFTH

E. FRANKLIN

SIXTH

AV.

E. ORDWAY

AV.

W. FRANKLIN

W. ORDWAY

45

46

35

30

36

29

44

37

28

43

38

27

SEVENTH

FOURTH

BEYOND

80'

80'

CHARLES BROS. ELEVATOR
 FEED MILL
 SHIPPIING PLATFORM

ANDREWS & GAGE
 ELEVATOR
 CAPY 35000 BUSHELS
 POWER: GRABEL

NORTHERN PACIFIC R.R.
 R.T. JOHNSON LUMBER YARD
 LUMBER SHED
 COAL SHED

R.R. DEPOT

FOSTER COUNTY COURT HO.
 JAIL BLDG.

WESTERN ELECTRIC CO.
 ELEC. LIGHT PLANT.

T.M. PUTNAM LUMBER SHED

Map Division
Library of Congress