



9-1898

Carrington, 1898

Sanborn Map Company

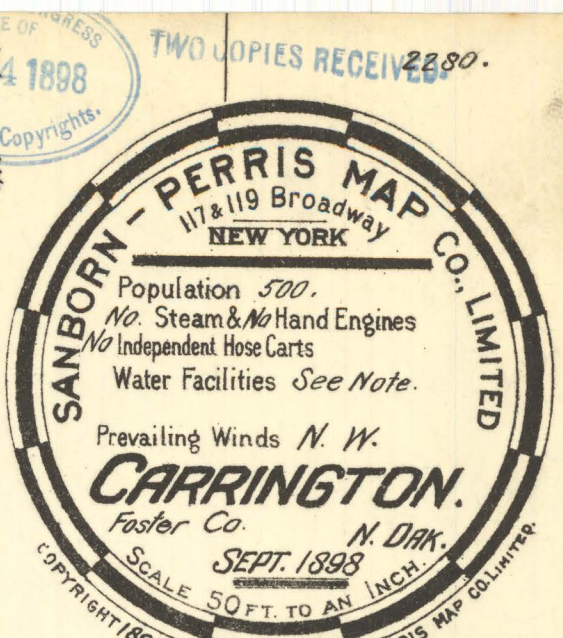
[How does access to this work benefit you? Let us know!](#)

Follow this and additional works at: <https://commons.und.edu/sanborn-maps>

Recommended Citation

Sanborn Map Company, "Carrington, 1898" (1898). *Sanborn Maps of North Dakota*. 37.
<https://commons.und.edu/sanborn-maps/37>

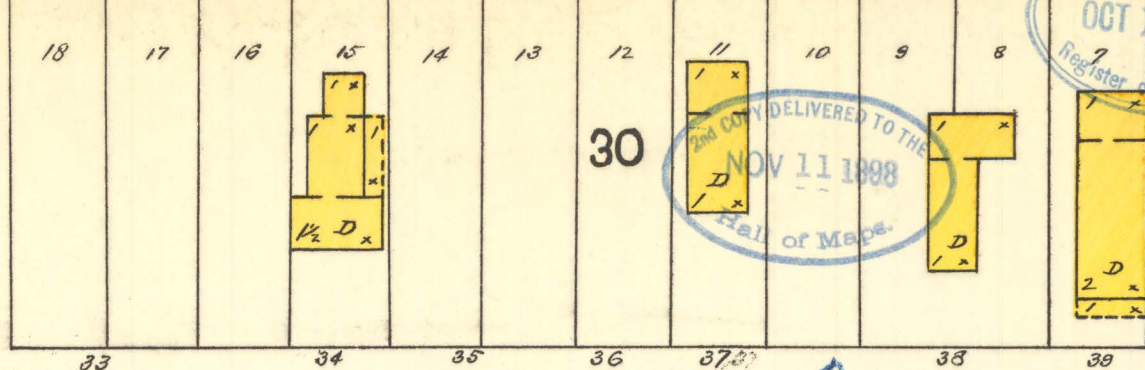
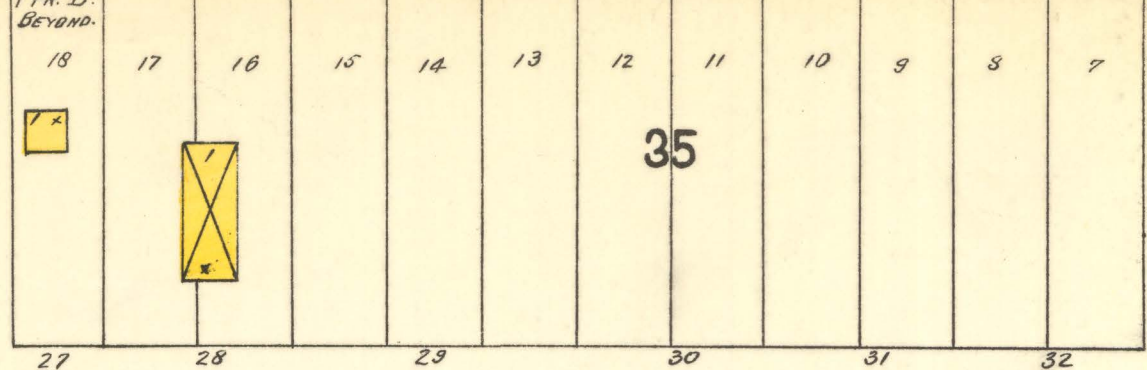
This Book is brought to you for free and open access by the Elwyn B. Robinson Department of Special Collections at UND Scholarly Commons. It has been accepted for inclusion in Sanborn Maps of North Dakota by an authorized administrator of UND Scholarly Commons. For more information, please contact und.common@library.und.edu.



1898 2
6053.2

46

SIXTH



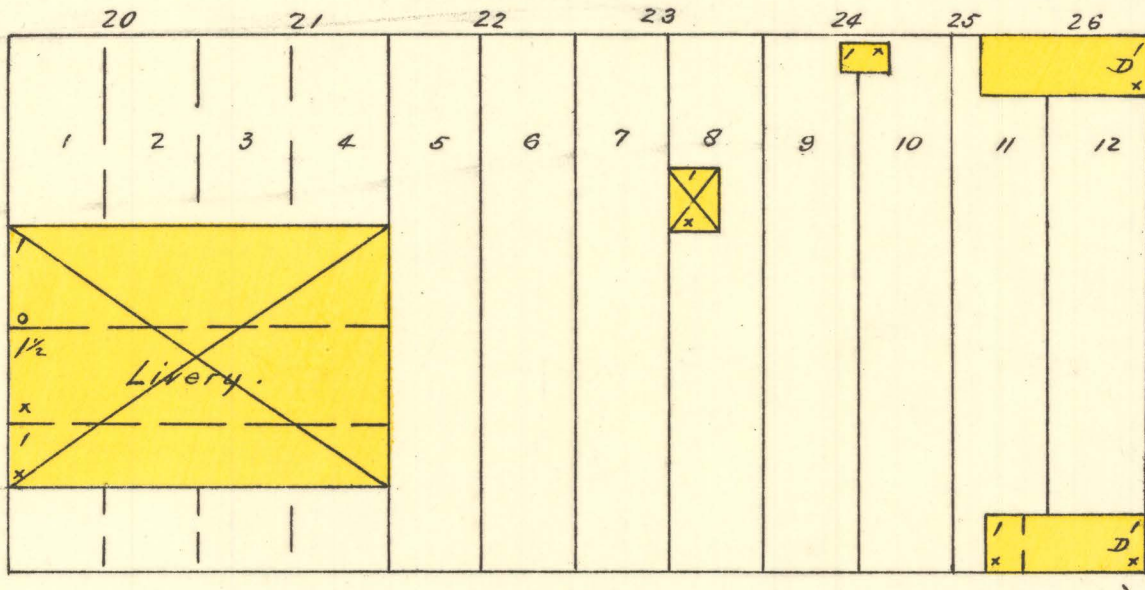
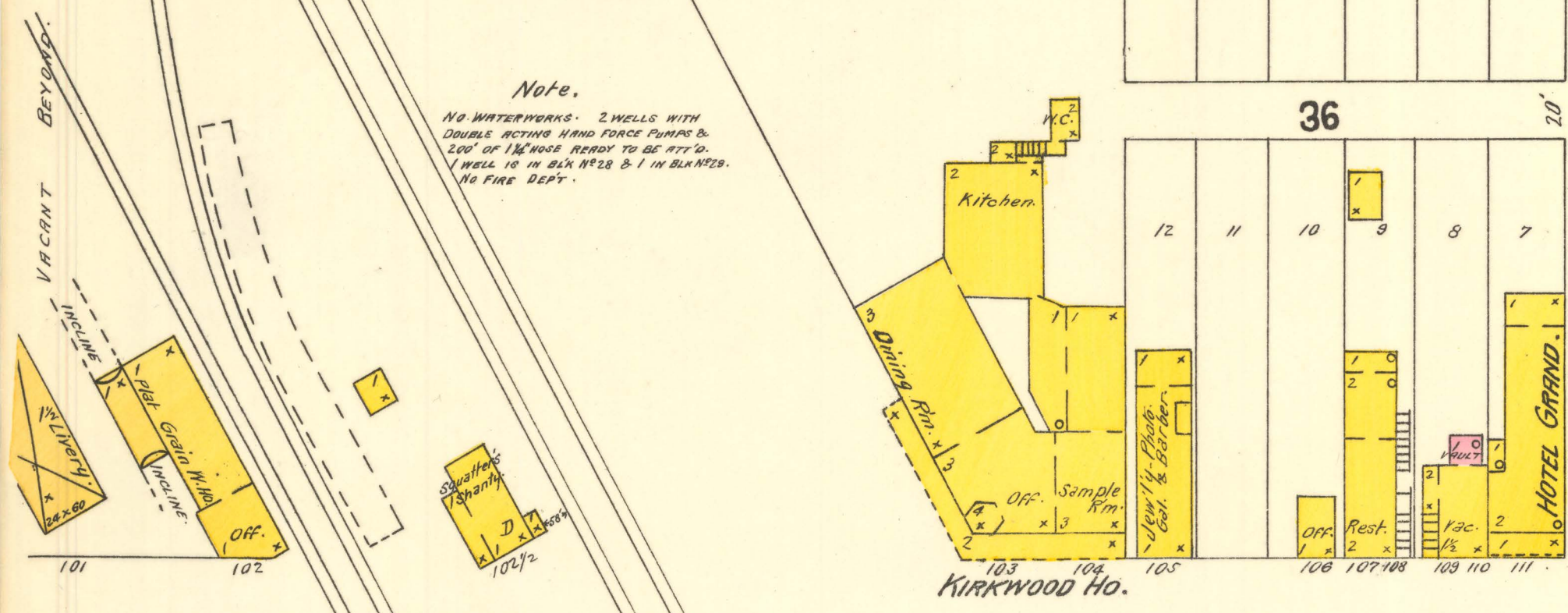
CHARLES

KEY

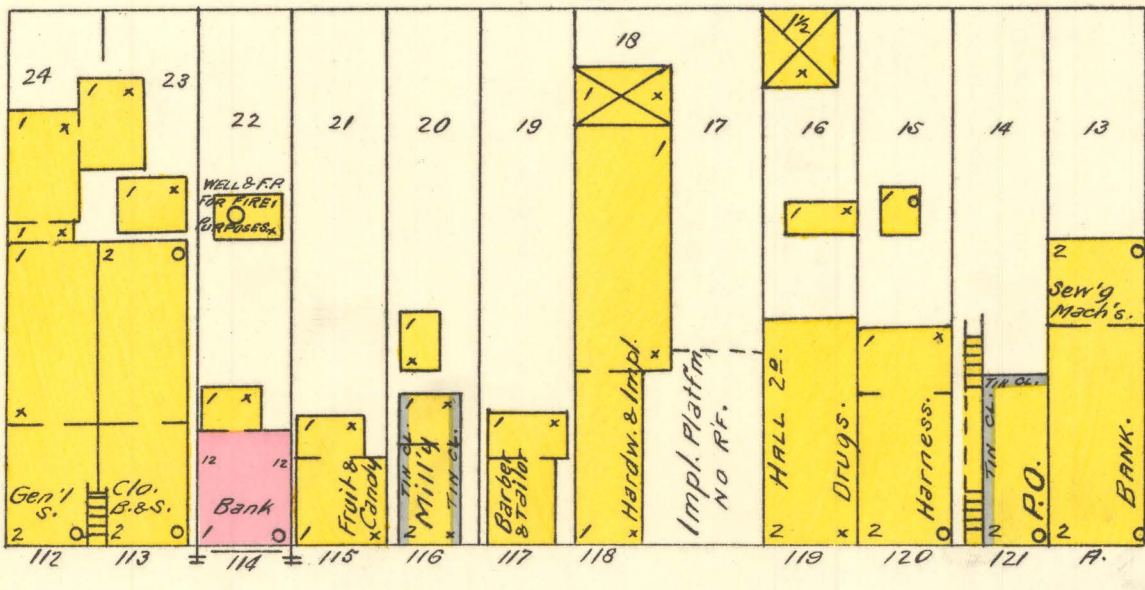
31	FIRE WALL 6 IN. AB. ROOF
12	SHEDDING
18	FRAME PARTITION
18	OPENING & IRON DOOR
18	WINDOWS - SHUTTERS
18	STABLE
18	WINDOW IN 1 ST STORY
18	2 1/2 & 3 1/2
18	2 1/2 & 4 1/2
18	2 1/2 & 5 1/2
18	2 1/2 & 6 1/2
18	2 1/2 & 7 1/2
18	2 1/2 & 8 1/2
18	2 1/2 & 9 1/2
18	2 1/2 & 10 1/2
18	2 1/2 & 11 1/2
18	2 1/2 & 12 1/2
18	2 1/2 & 13 1/2
18	2 1/2 & 14 1/2
18	2 1/2 & 15 1/2
18	2 1/2 & 16 1/2
18	2 1/2 & 17 1/2
18	2 1/2 & 18 1/2
18	2 1/2 & 19 1/2
18	2 1/2 & 20 1/2
18	2 1/2 & 21 1/2
18	2 1/2 & 22 1/2
18	2 1/2 & 23 1/2
18	2 1/2 & 24 1/2
18	2 1/2 & 25 1/2
18	2 1/2 & 26 1/2
18	2 1/2 & 27 1/2
18	2 1/2 & 28 1/2
18	2 1/2 & 29 1/2
18	2 1/2 & 30 1/2
18	2 1/2 & 31 1/2
18	2 1/2 & 32 1/2
18	2 1/2 & 33 1/2
18	2 1/2 & 34 1/2
18	2 1/2 & 35 1/2
18	2 1/2 & 36 1/2
18	2 1/2 & 37 1/2
18	2 1/2 & 38 1/2
18	2 1/2 & 39 1/2
18	2 1/2 & 40 1/2
18	2 1/2 & 41 1/2
18	2 1/2 & 42 1/2
18	2 1/2 & 43 1/2
18	2 1/2 & 44 1/2
18	2 1/2 & 45 1/2
18	2 1/2 & 46 1/2
18	2 1/2 & 47 1/2
18	2 1/2 & 48 1/2
18	2 1/2 & 49 1/2
18	2 1/2 & 50 1/2
18	2 1/2 & 51 1/2
18	2 1/2 & 52 1/2
18	2 1/2 & 53 1/2
18	2 1/2 & 54 1/2
18	2 1/2 & 55 1/2
18	2 1/2 & 56 1/2
18	2 1/2 & 57 1/2
18	2 1/2 & 58 1/2
18	2 1/2 & 59 1/2
18	2 1/2 & 60 1/2
18	2 1/2 & 61 1/2
18	2 1/2 & 62 1/2
18	2 1/2 & 63 1/2
18	2 1/2 & 64 1/2
18	2 1/2 & 65 1/2
18	2 1/2 & 66 1/2
18	2 1/2 & 67 1/2
18	2 1/2 & 68 1/2
18	2 1/2 & 69 1/2
18	2 1/2 & 70 1/2
18	2 1/2 & 71 1/2
18	2 1/2 & 72 1/2
18	2 1/2 & 73 1/2
18	2 1/2 & 74 1/2
18	2 1/2 & 75 1/2
18	2 1/2 & 76 1/2
18	2 1/2 & 77 1/2
18	2 1/2 & 78 1/2
18	2 1/2 & 79 1/2
18	2 1/2 & 80 1/2
18	2 1/2 & 81 1/2
18	2 1/2 & 82 1/2
18	2 1/2 & 83 1/2
18	2 1/2 & 84 1/2
18	2 1/2 & 85 1/2
18	2 1/2 & 86 1/2
18	2 1/2 & 87 1/2
18	2 1/2 & 88 1/2
18	2 1/2 & 89 1/2
18	2 1/2 & 90 1/2
18	2 1/2 & 91 1/2
18	2 1/2 & 92 1/2
18	2 1/2 & 93 1/2
18	2 1/2 & 94 1/2
18	2 1/2 & 95 1/2
18	2 1/2 & 96 1/2
18	2 1/2 & 97 1/2
18	2 1/2 & 98 1/2
18	2 1/2 & 99 1/2
18	2 1/2 & 100 1/2

Note.

NO WATERWORKS - 2 WELLS WITH DOUBLE ACTIVE HAND FORCE PUMPS & 20' OF 12" PIPE LEAD TO DEPTHS 1' WELL 10' IN DIA. FEET & 1 IN DIA. NO FIRE DEPT.



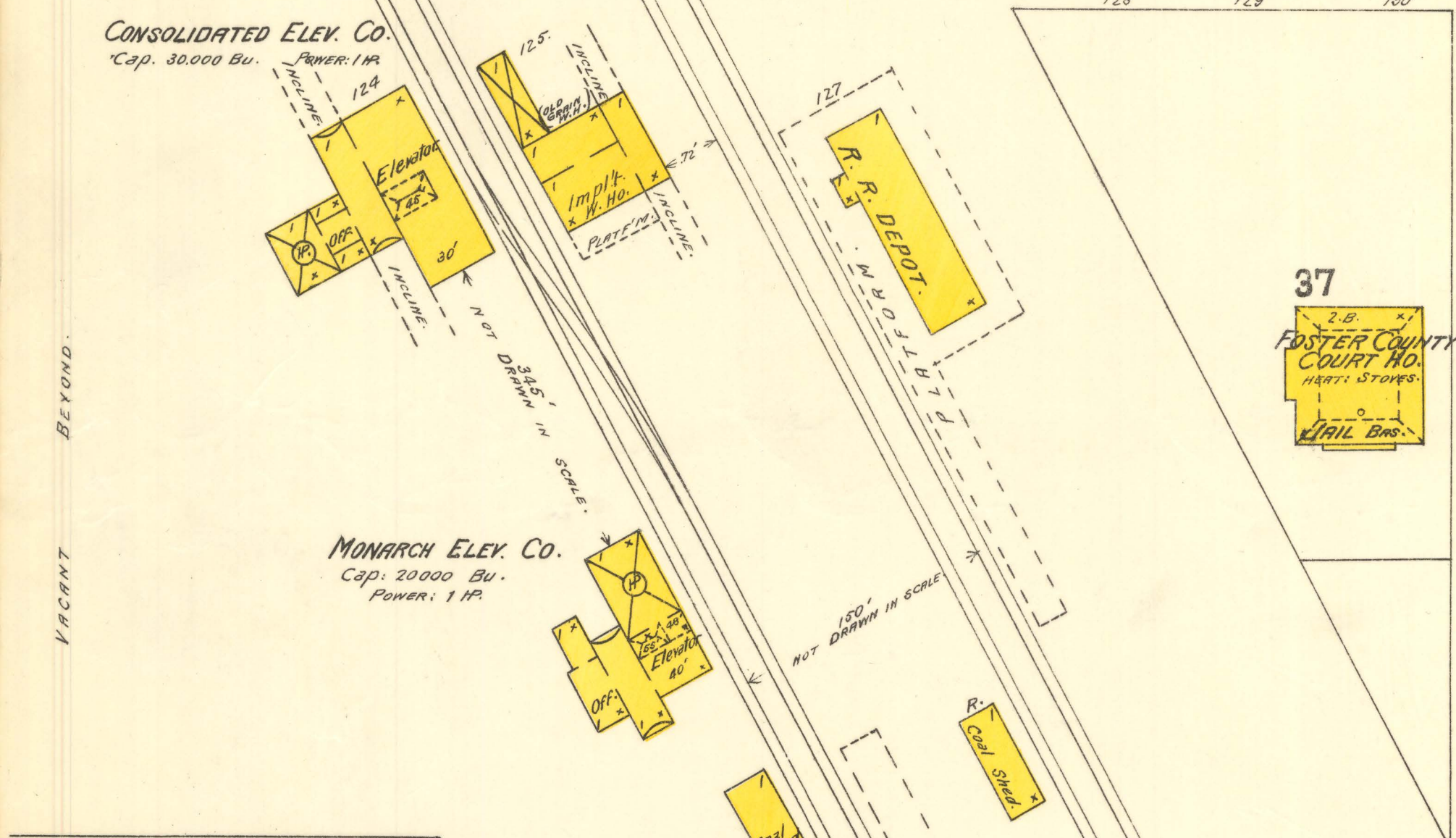
THOS. DOUGHTY
AGRICULTURAL IMPLEMENT
& LUMBER YARD
(NOT FENCED)



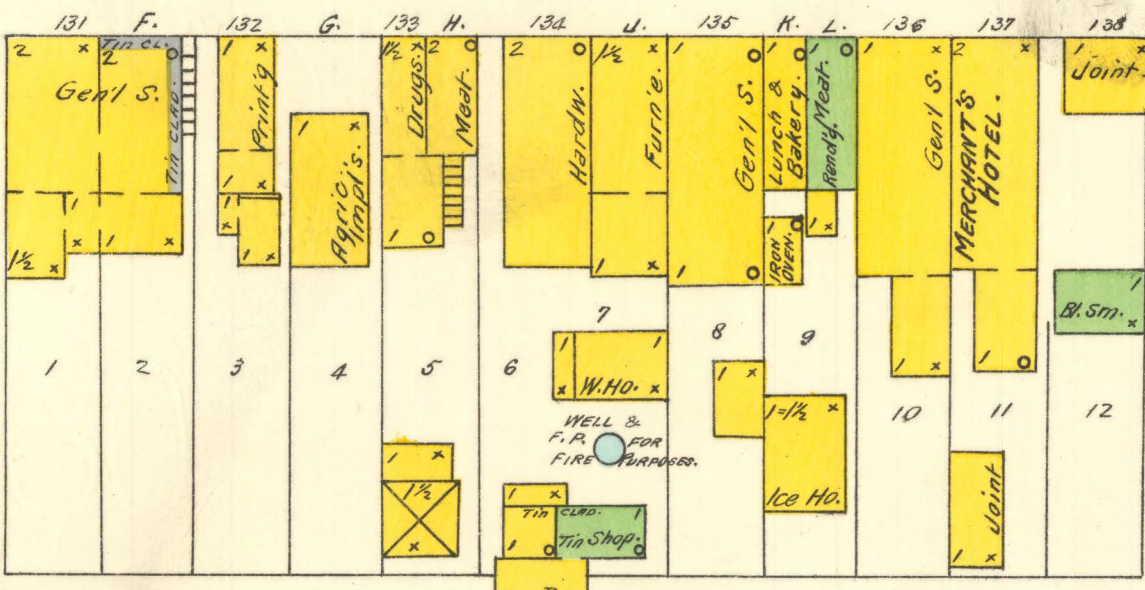
MAIN

CONSOLIDATED ELEV. CO.
Cap. 30000 Bu.
POWER: 1 HP

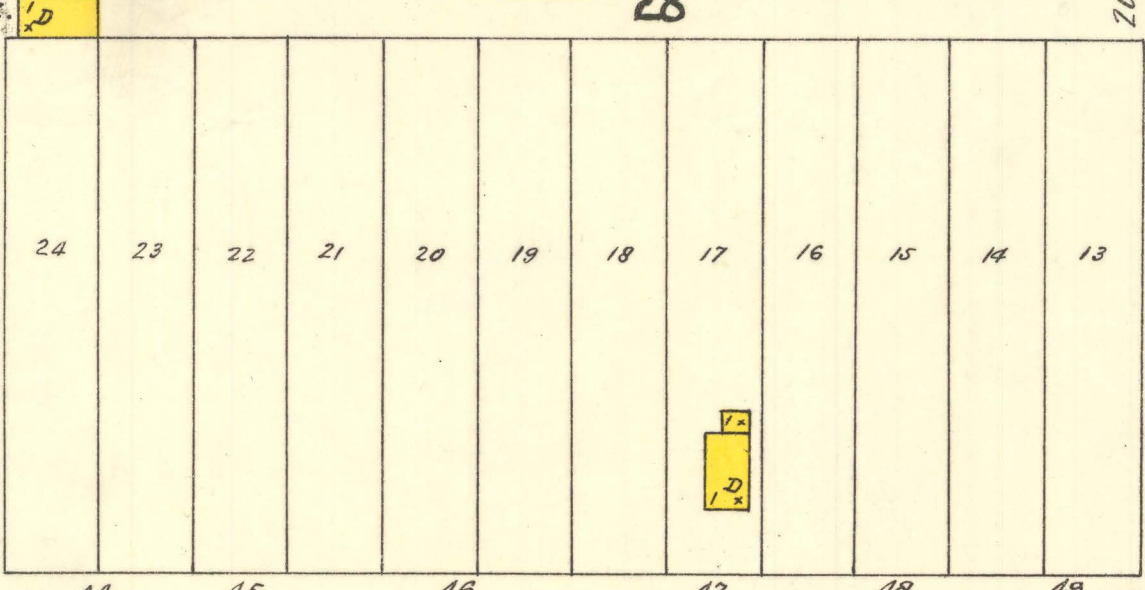
MONARCH ELEV. CO.
Cap. 20000 Bu.
POWER: 1 HP



FIFTH



FOURTH



FRANKLIN

CARRINGTON ROLLER MILL.
Cap: 75 Bbls p. day.
No WATERWORKS. LIGHT: COAL OIL LAMP. MEAT-STEAK
WATER: FROM WELLS. 1 WATERWHEEL & 2 WATERWHEELS.
MACH: 1 BUSH & SCOURER.
12 FL: 1 DOUBLE ROLLER - 1 RUBBER ROLLER.
24 FL: 1 HARVING & SHANNON FLOUR DRIVEN.
1 HARVING & SHANNON DOUBLE SIEVE PUMPER
& MILLFORD CIRCULAR FLOUR DRESSER.
NO EXPOSURE ANY SIDE.

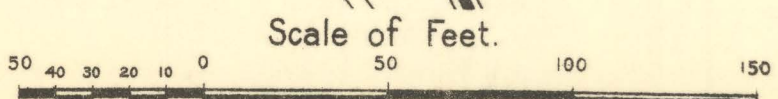
THOS. N. PUTNUM'S
LUMBER YARD

DUNKARD CHURCH
HEAT: STOVES
15' TO EGRESS

PUBLIC SCHOOL
HEAT: FURNACE
2-B.

M. GARVEY
CONSTRUCTION
Impal. W. Ho. x

M. E. CHURCH
HEAT: STOVES
15' TO EGRESS



ST. PAUL

Cour.
9.26.98