



9-1893

Carrington, 1893

Sanborn Map Company

[How does access to this work benefit you? Let us know!](#)

Follow this and additional works at: <https://commons.und.edu/sanborn-maps>

Recommended Citation

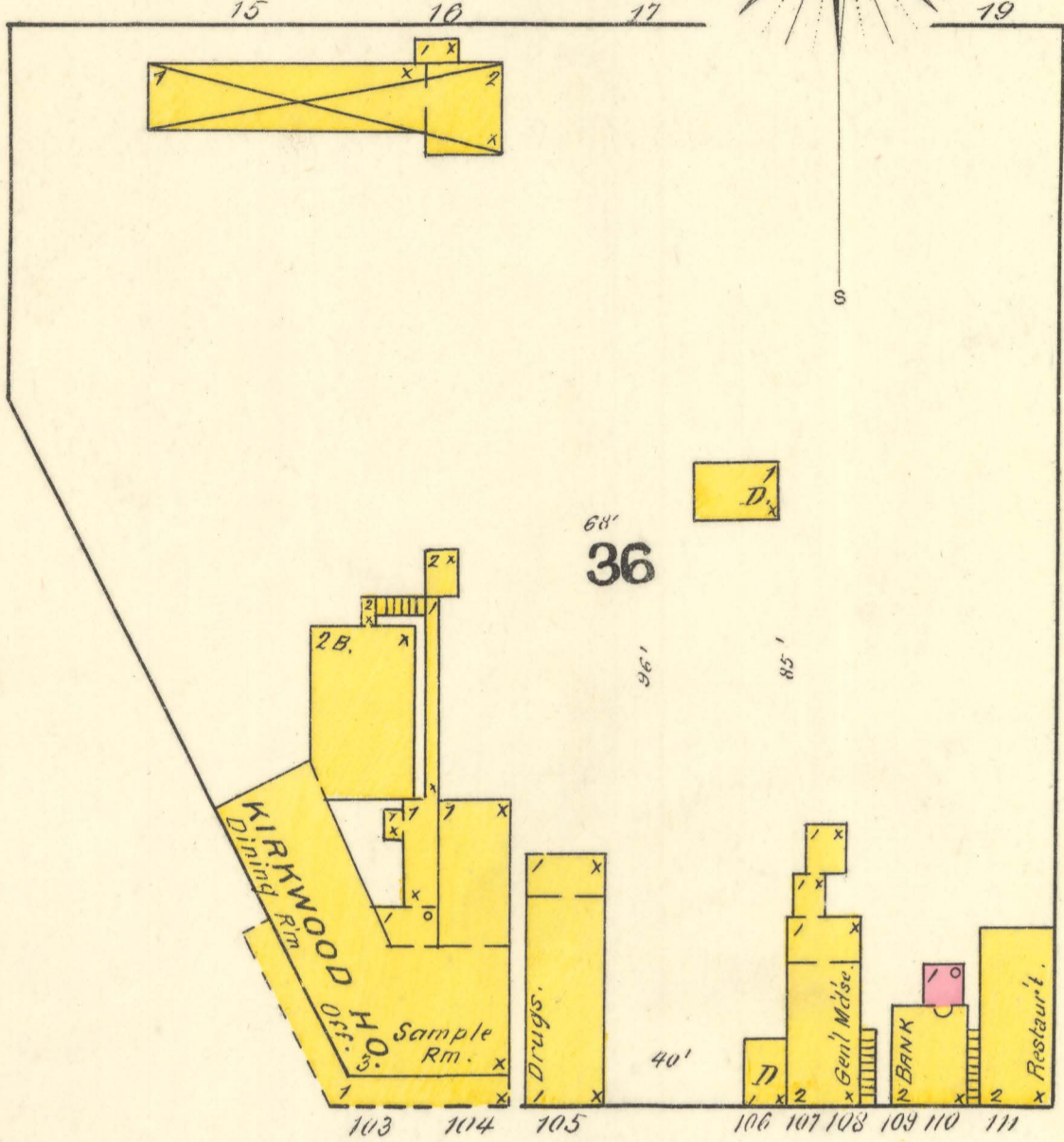
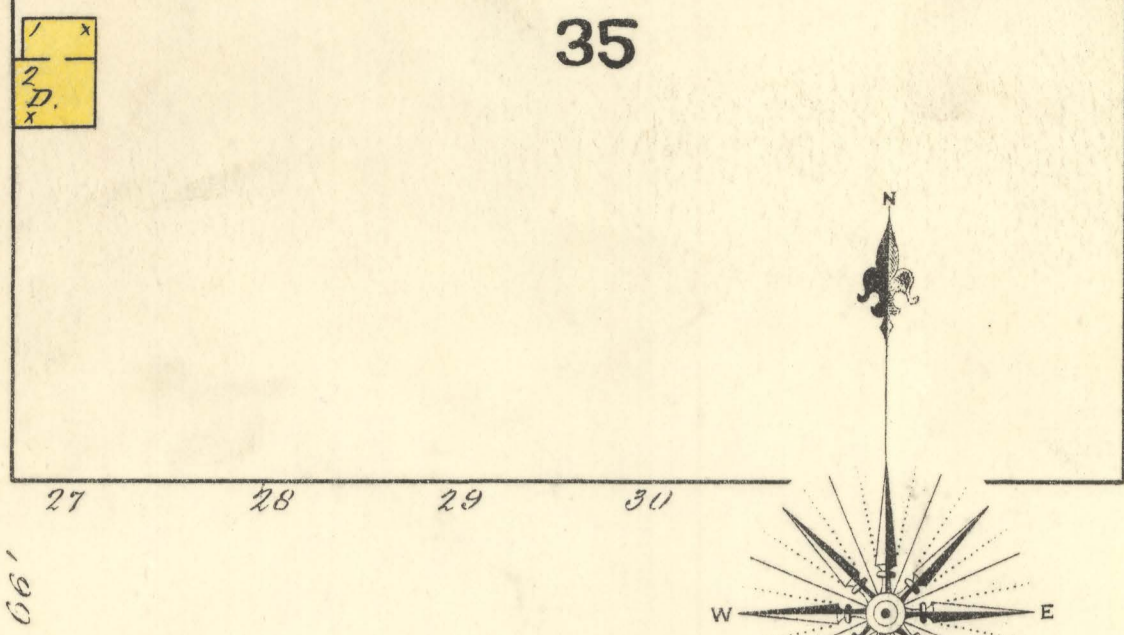
Sanborn Map Company, "Carrington, 1893" (1893). *Sanborn Maps of North Dakota*. 22.
<https://commons.und.edu/sanborn-maps/22>

This Book is brought to you for free and open access by the Elwyn B. Robinson Department of Special Collections at UND Scholarly Commons. It has been accepted for inclusion in Sanborn Maps of North Dakota by an authorized administrator of UND Scholarly Commons. For more information, please contact und.common@library.und.edu.

500571

46

KEY	
3	FIRE WALL GIN. AB. ROOF
12	SHINGLE ROOF
18	CONCRETE ROOF
18	Slate on the Roof
18	FRAME PARTITION
18	OPENING & IRON DOOR
18	WINDOWS - SHUTTERS
18	STABLE
18	WINDOW IN 1 ST STORY
18	11' & 3"
18	27' & 4"
B'LGES COLORED YELLOW ARE FRAME	
RED	BRICK
BLUE	STONE
GREY	IRON
BROWN	ADORE
GREEN	SPECIALS
MARKED (S) ARE CLOTH LINED	
(D) INDICATE RELATIVE HEIGHTS	
ALTERNATE STREET NOS ARE ACTUAL	
CONSECUTIVE - ARBITRARY	
BROKEN LINE NEAR B'LG - WOOD CORNICE	
SOLID - METAL	



ST.

6TH

ST.

35

36

37

FOSTER COUNTY COURT HO.
HEAT: STOVES.

NORTHERN DAKOTA ELEVATOR CO.

38

Lumber

45

44

43

NORTHERN PAC. ELEV. CO'S GRAIN ELEV. (Not Running.)
JAS. JOHN'S GRAIN ELEVATOR HORSE POWER.
Cap. 10000 BUS.

Grain Warehouse

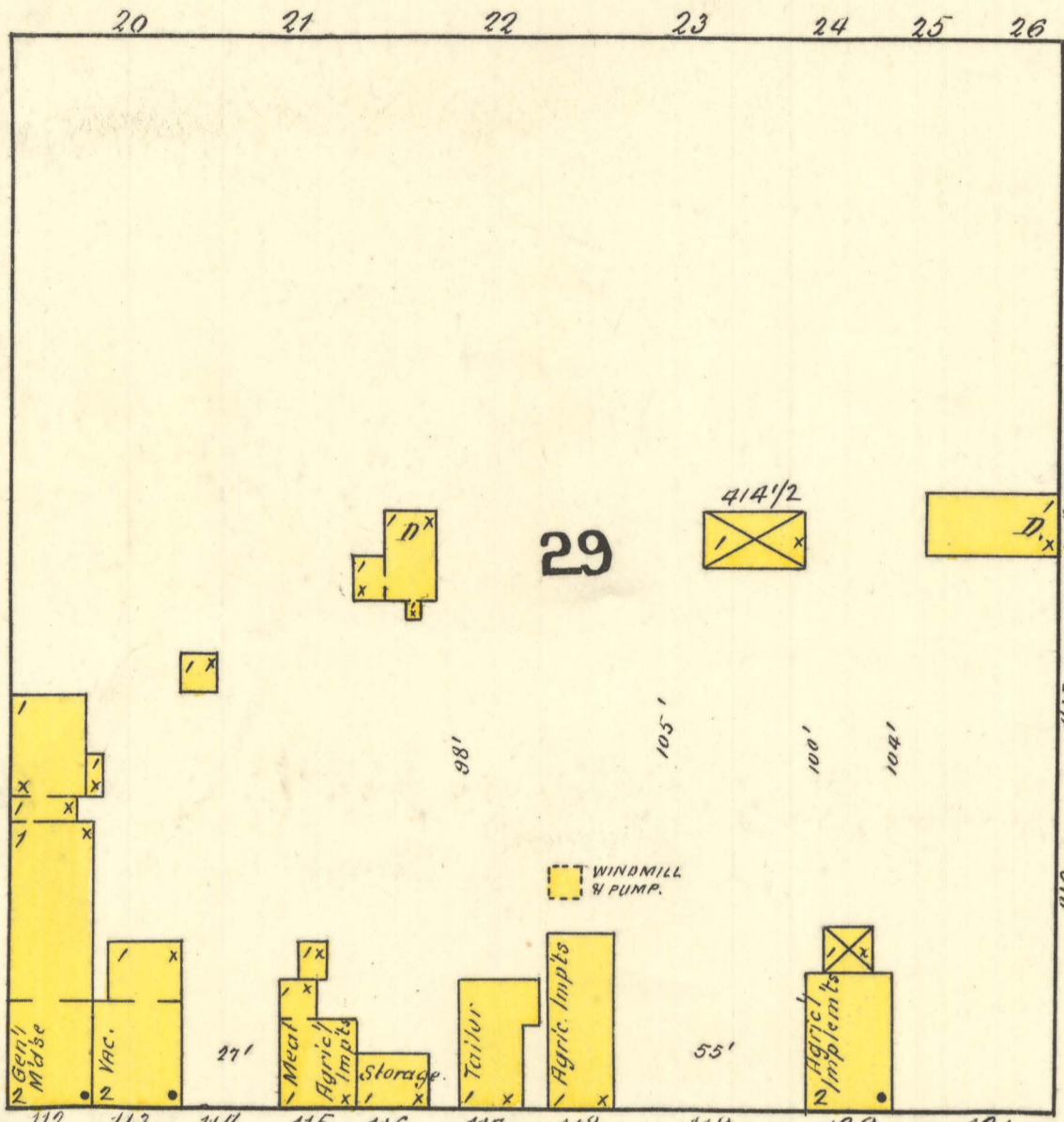
I FIND THIS MAP COMPLETE & CORRECT.

S. E. Ellsworth
AGENT ST. PAUL FIRE & MARINE.

30

66' 33 34 35 36 37 38 39

CHARLES

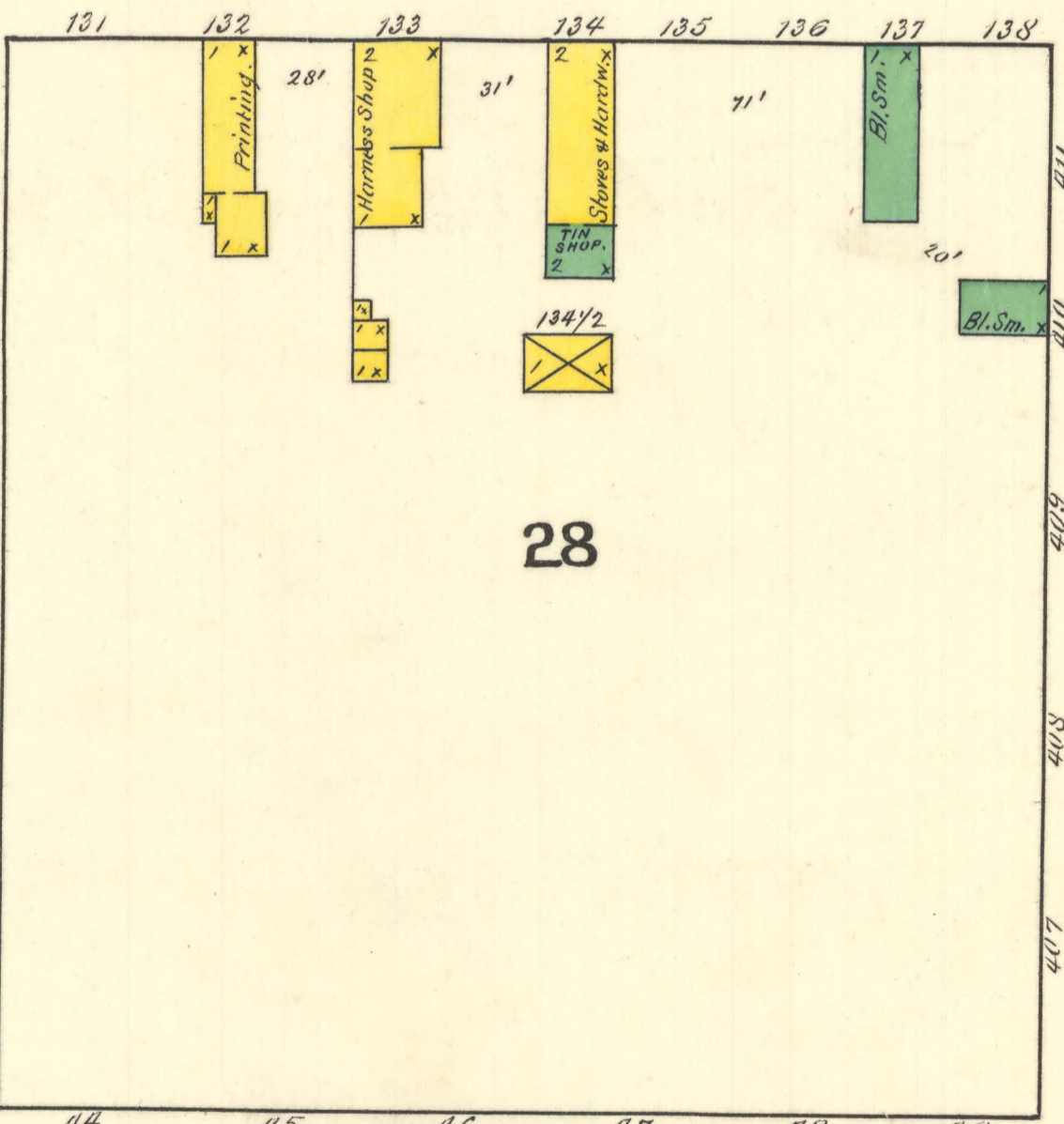


ST.

5TH

66'

MAIN

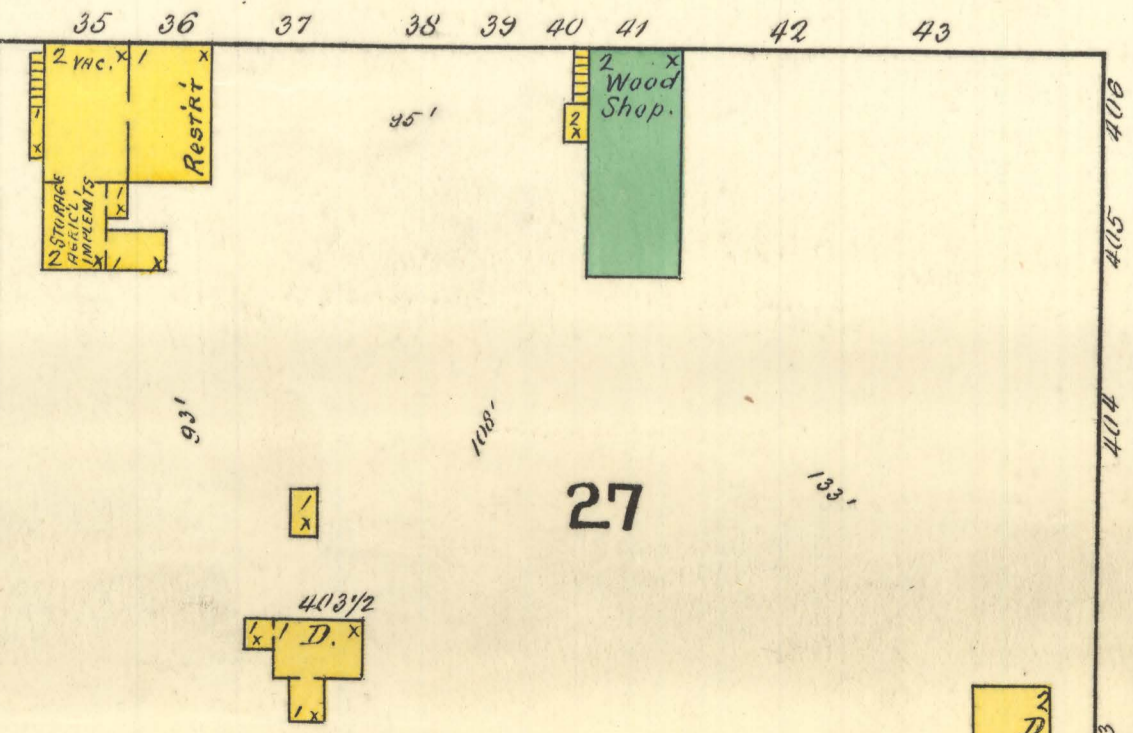


ST.

4TH

66'

FRANKLIN



ST.

66'

Scale of Feet.

6771.

SANBORN - PERRIS MAP CO. LIMITED
117 & 119 Broadway
NEW YORK

Population 250
No. Steam & Hand Engines
No. Independent Horse Cars
Water Facilities NONE.

Prevailing Winds N. W.
CARRINGTON
FOSTER Co. N. D.
SEPT. 1893.
SCALE 50 FT. TO AN INCH.

LIBRARY OF CONGRESS
COPYRIGHT
NOV 13 1893
50537
OF WASHINGTON

25 COPY DEL TO MAP DIV.
JUN 15 1907

COPYRIGHT 1893 BY THE SANBORN - PERRIS MAP CO. LIMITED

Map Division
Library of Congress

J. B. T.
Oct. 93.