



8-1913

## Cando, 1913

Sanborn Map Company

[How does access to this work benefit you? Let us know!](#)

Follow this and additional works at: <https://commons.und.edu/sanborn-maps>

---

### Recommended Citation

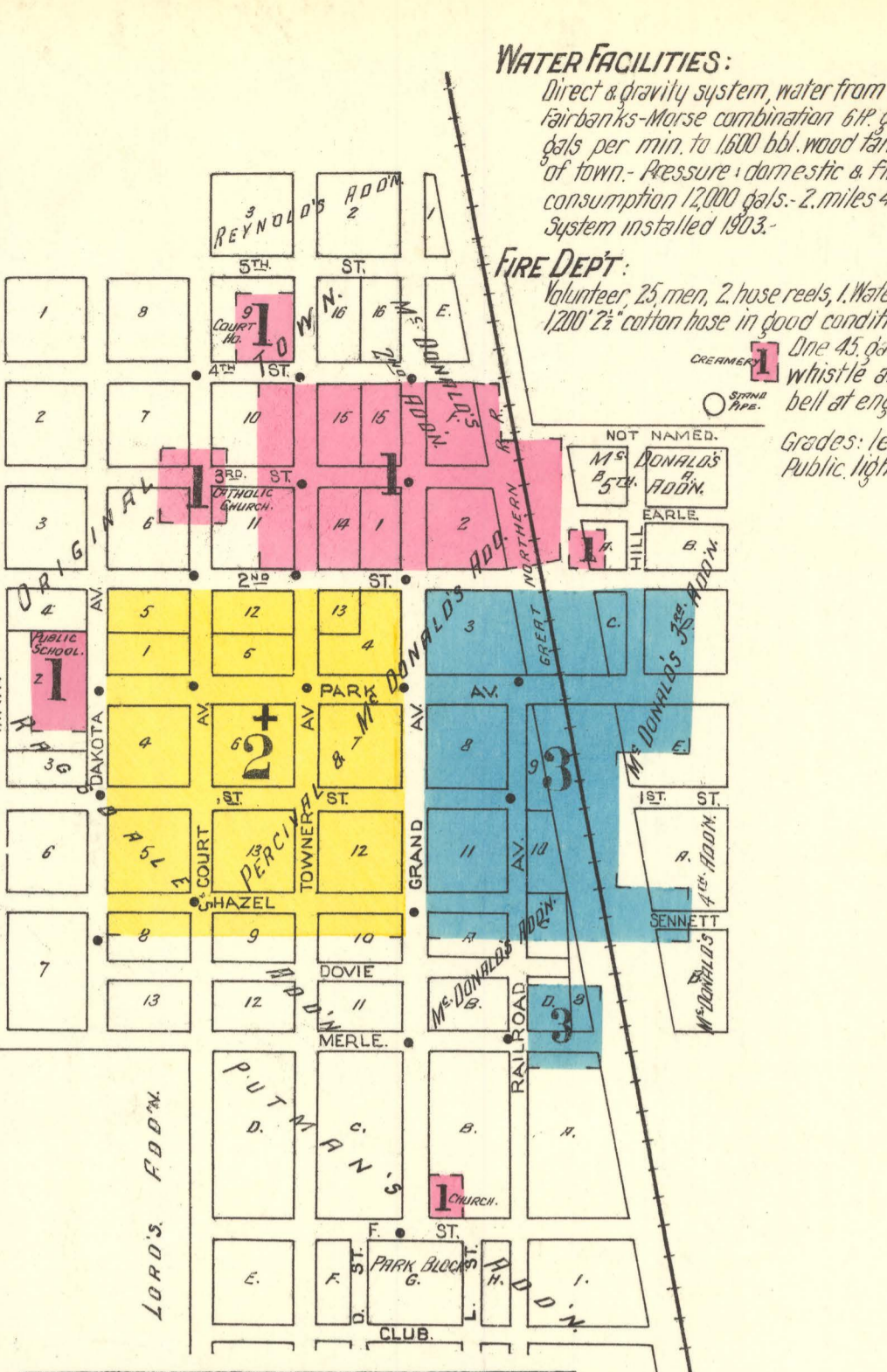
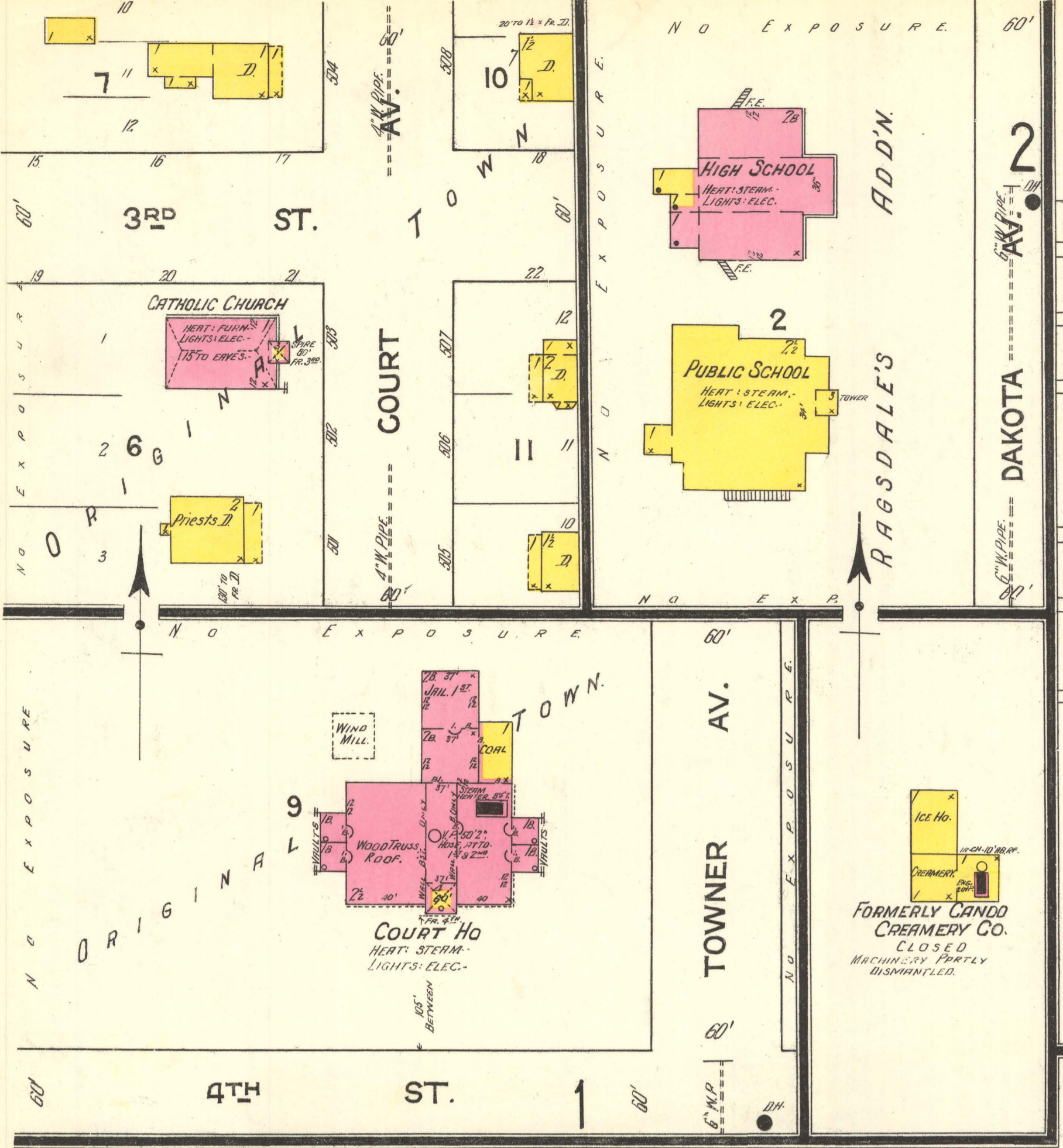
Sanborn Map Company, "Cando, 1913" (1913). *Sanborn Maps of North Dakota*. 24.  
<https://commons.und.edu/sanborn-maps/24>

This Book is brought to you for free and open access by the Elwyn B. Robinson Department of Special Collections at UND Scholarly Commons. It has been accepted for inclusion in Sanborn Maps of North Dakota by an authorized administrator of UND Scholarly Commons. For more information, please contact [und.common@library.und.edu](mailto:und.common@library.und.edu).



# INDEX

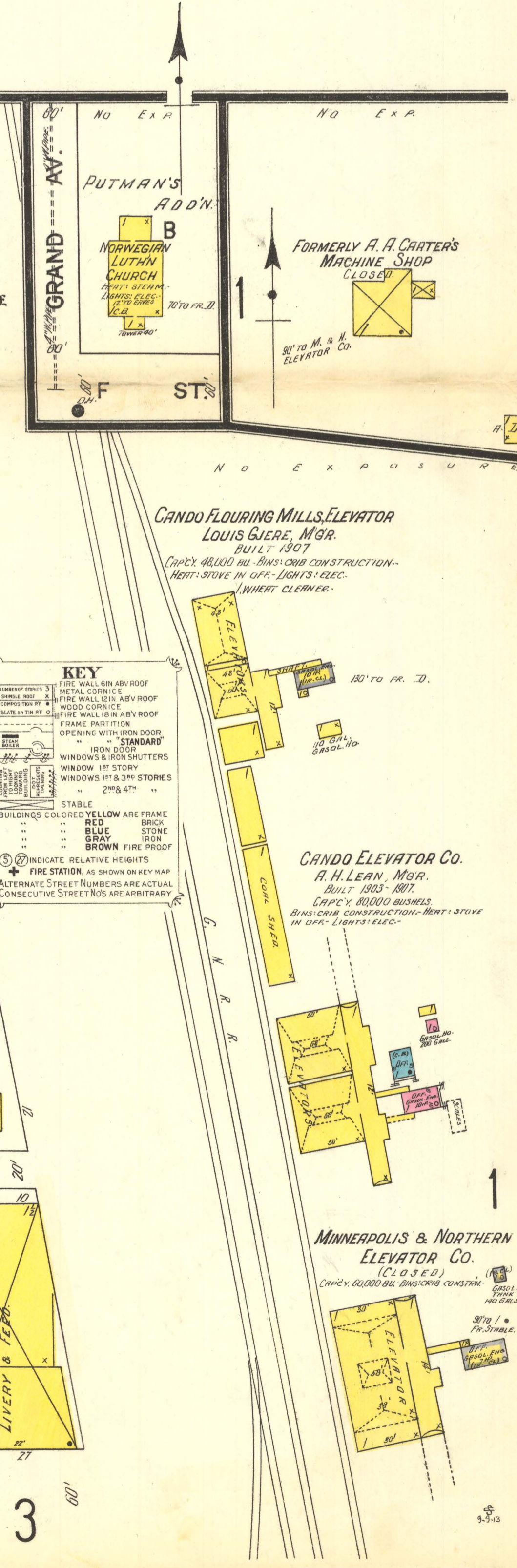
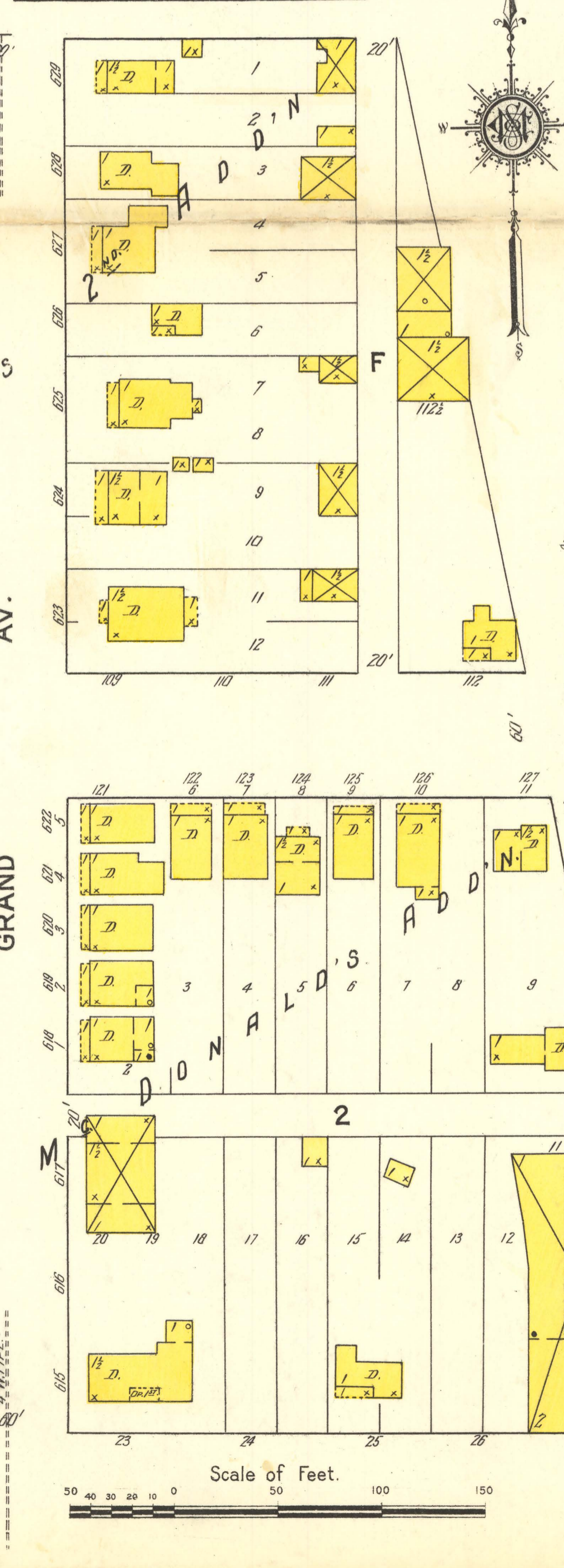
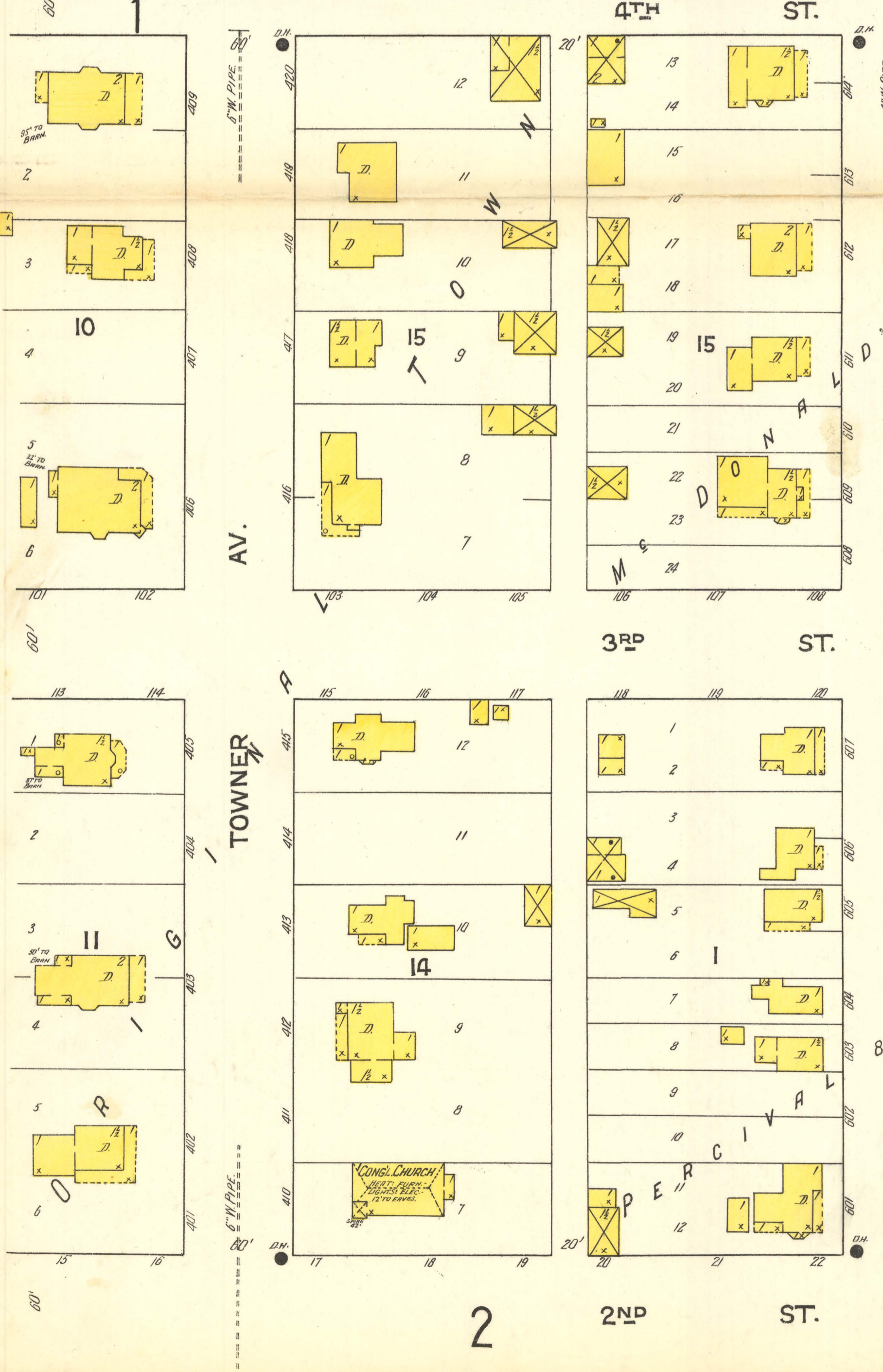
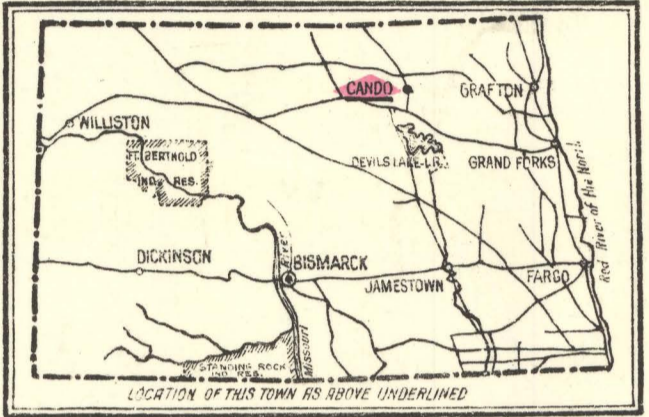
SPECIALS	SHEET	I	SHEET
Imperial Elevator Co.,	1	I	3
Cando Creamery Co. (formerly),	1	L	2
Elevator Co.,	1	M	1
Flouring Mills, Elevator,	1	McLaughlin Elevator Co.,	3
Carters, A. A., Machine Shop (formerly),	1	Majestic Hotel,	3
Catholic Church,	1	Methodist Episcopal Church,	2
Congregational Church,	1	Minneapolis and Northern Elevator Co.,	1
Conyers & Son, Lumber Yard,	2		
County Court House and Jail,	1		
Duluth Elevator Co.,	3	N	1
		Norwegian Lutheran Church,	1
Episcopal Church,	2	P	3
		Piper-Howe Lumber Co.,	3
		Post Office,	3
		Presbyterian Church,	2
		Public School,	1
Farmers' Elevator Co.,	3	R	2
Fire Department,	2	Rader, J. C., Light Pl't & Teleph. Exch'ge,	2
G. N. R. R. Depot,	3	S	3
		St. Anthony and Dakota Elevator Co.,	3
High School,	1	U	2
Hotel Cando,	3	United Brethren Church,	2



**WATER FACILITIES:**  
Direct gravity system, water from two 6" wells, pumped by Fairbanks-Morse combination 6HP gasol eng. & pump, cap'city 20 gals per min. to 1500 bbl. wood tank 80' above business portion of town. Pressure: domestic & Fire 35 lbs. Average daily consumption 12,000 gals. - 2 miles 4", 6" & 8" mains. 21 D.H. Mts. System installed 1903.

**FIRE DEPT:**  
Volunteer, 25 men, 2 hose reels, 1 Waterloo fire eng., 1 M.L. truck. 1200' 2 1/2" cotton hose in good condition, 800' 2 1/2" cotton hose (old). One 45 gal. chem. eng. fire alarm whistle at electric light plant, also bell at engine ho.

Grades: level. Streets: not paved.  
Public lights: electric.



**KEY**

STABLE BUILDINGS COLORED YELLOW ARE FRAME  
 .. BRICK  
 .. BLUE STONE  
 .. GRAY IRON  
 .. BROWN FIRE PROOF

(S) INDICATE RELATIVE HEIGHTS  
 + FIRE STATION, AS SHOWN ON KEY MAP  
 ALTERNATE STREET NUMBERS ARE ACTUAL  
 CONSECUTIVE STREET NOS ARE ARBITRARY

