



1-1908

Cando, 1908

Sanborn Map Company

[How does access to this work benefit you? Let us know!](#)

Follow this and additional works at: <https://commons.und.edu/sanborn-maps>

Recommended Citation

Sanborn Map Company, "Cando, 1908" (1908). *Sanborn Maps of North Dakota*. 25.
<https://commons.und.edu/sanborn-maps/25>

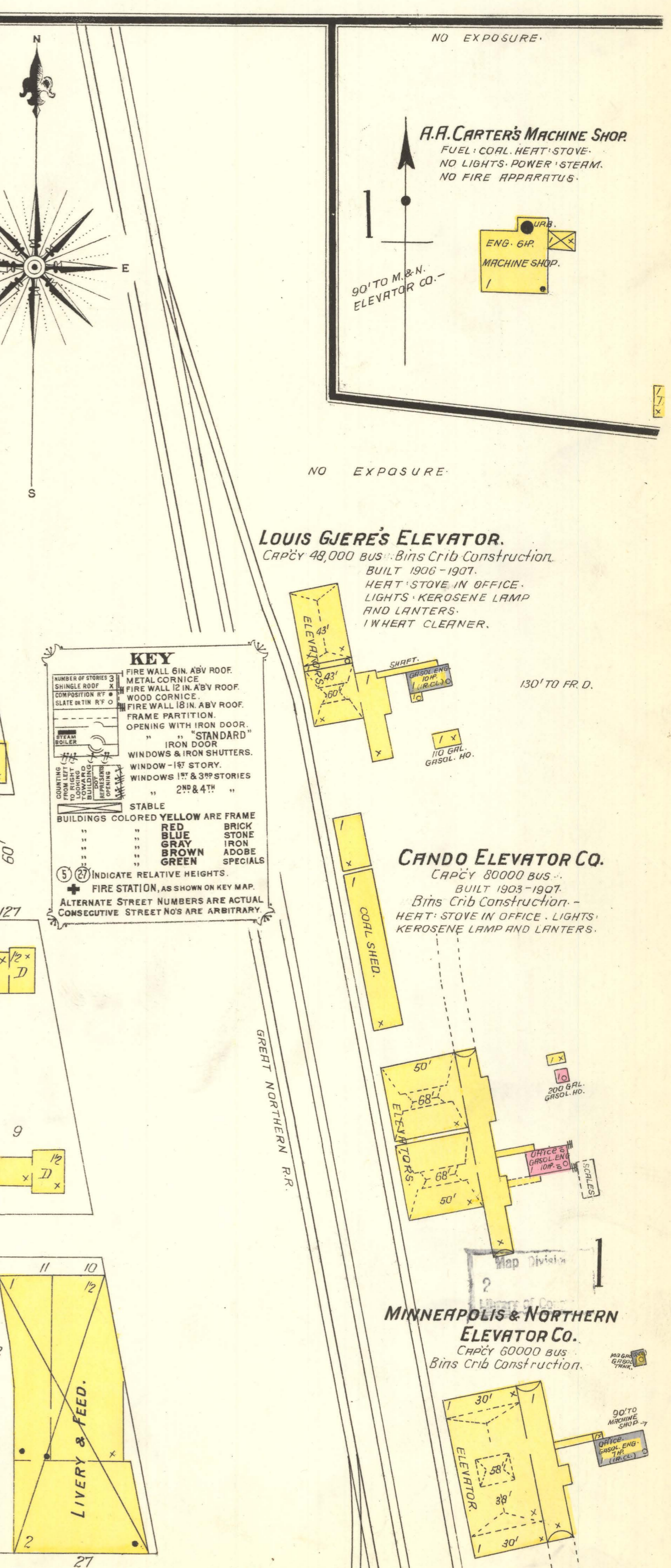
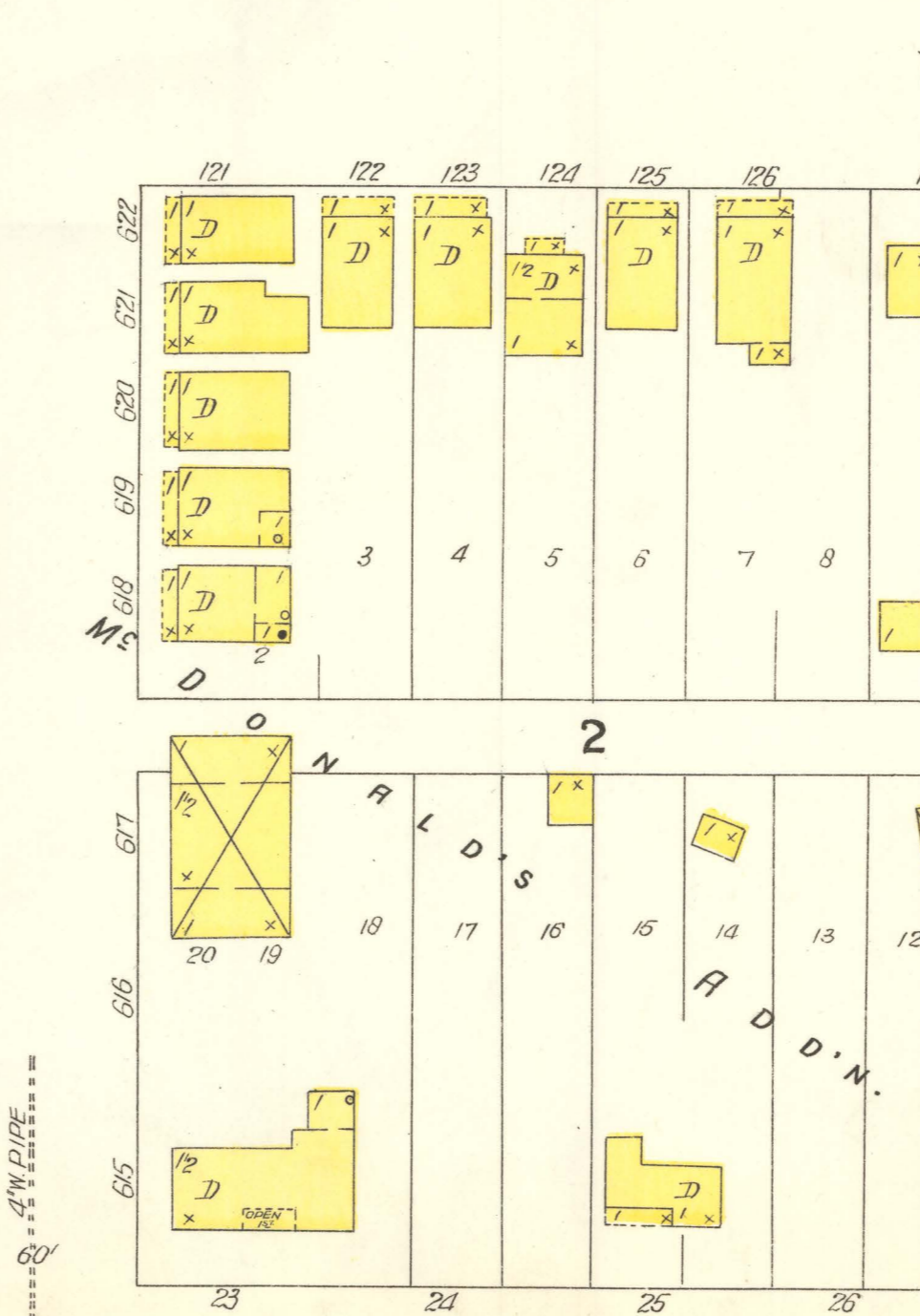
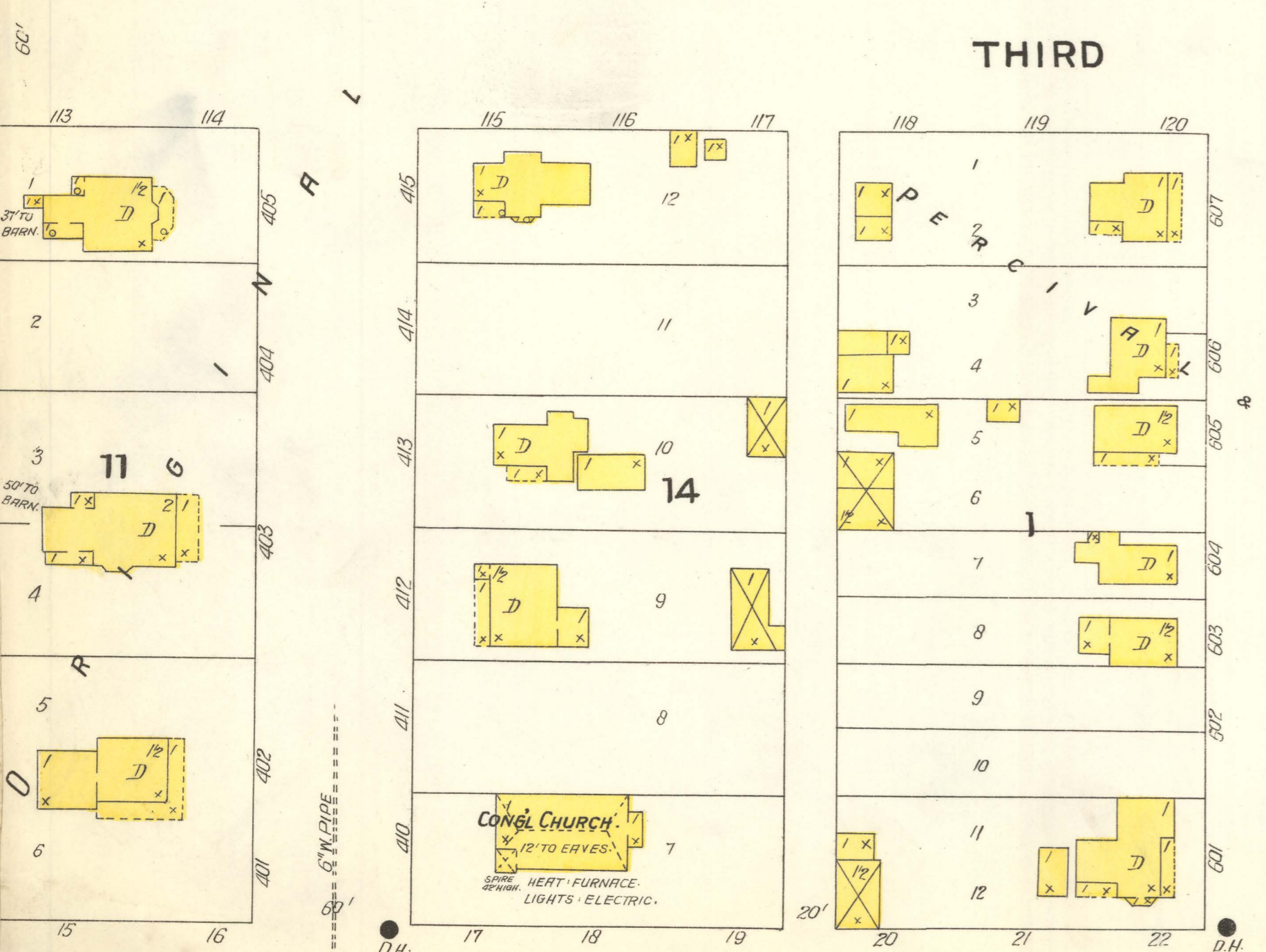
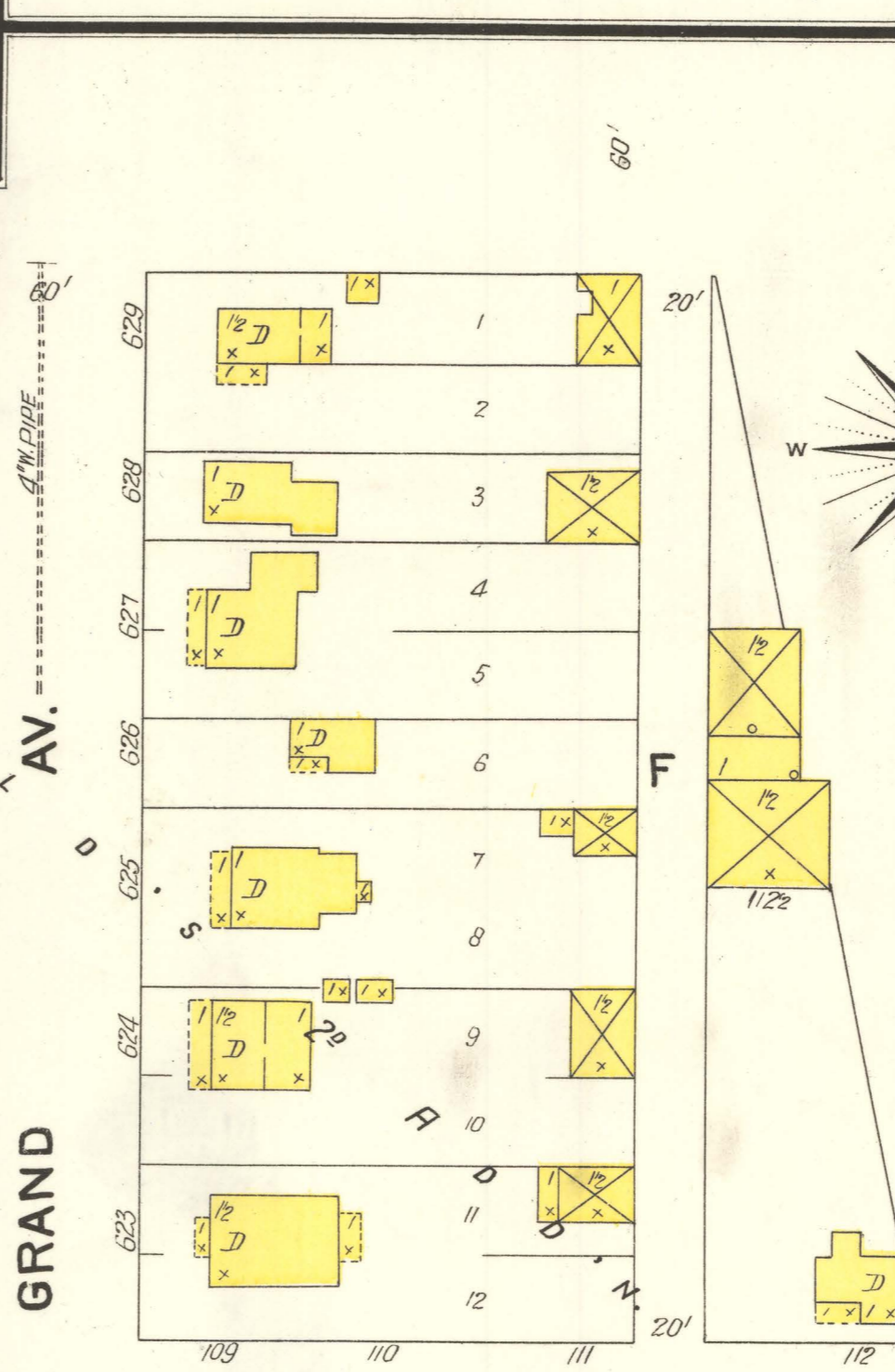
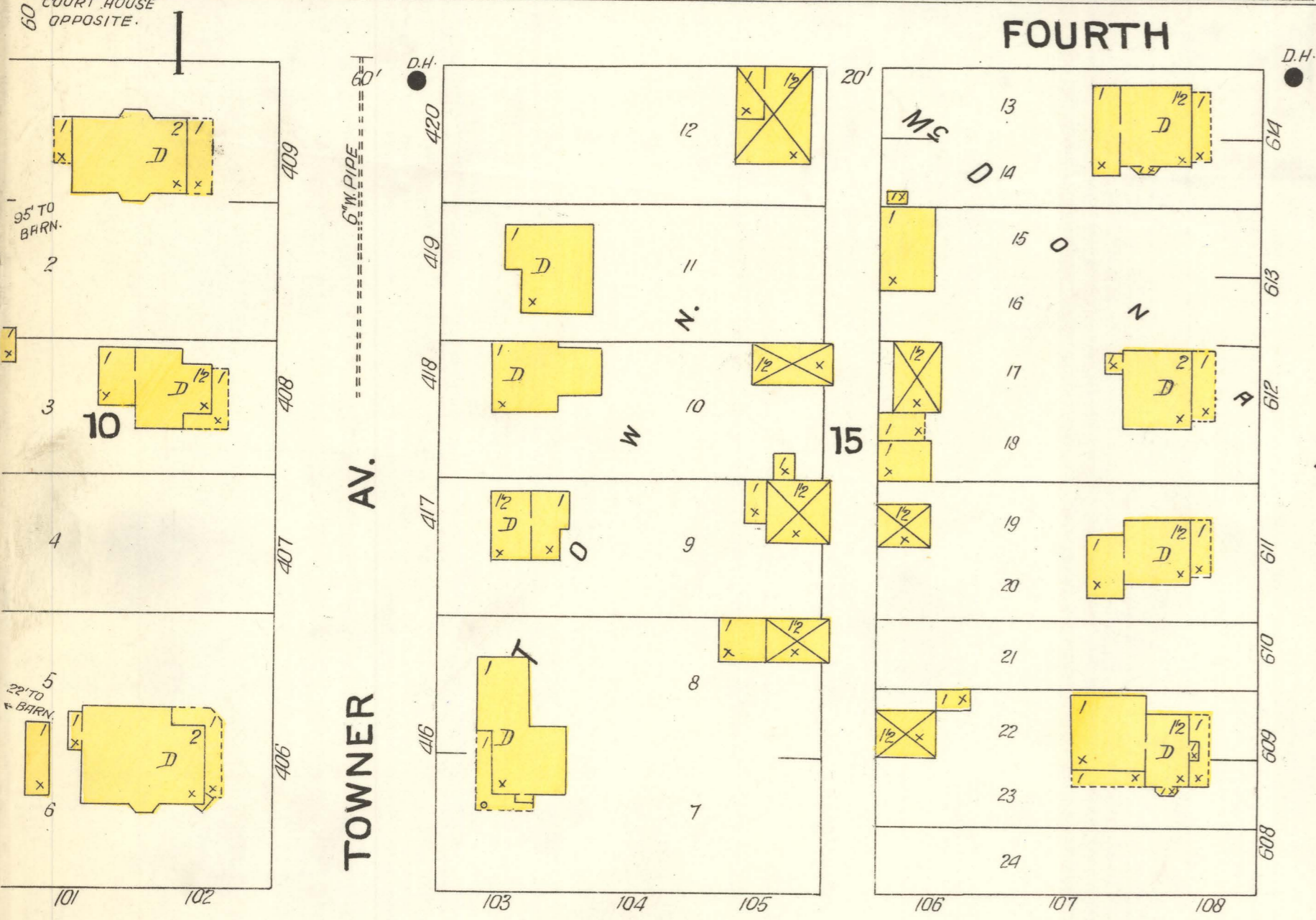
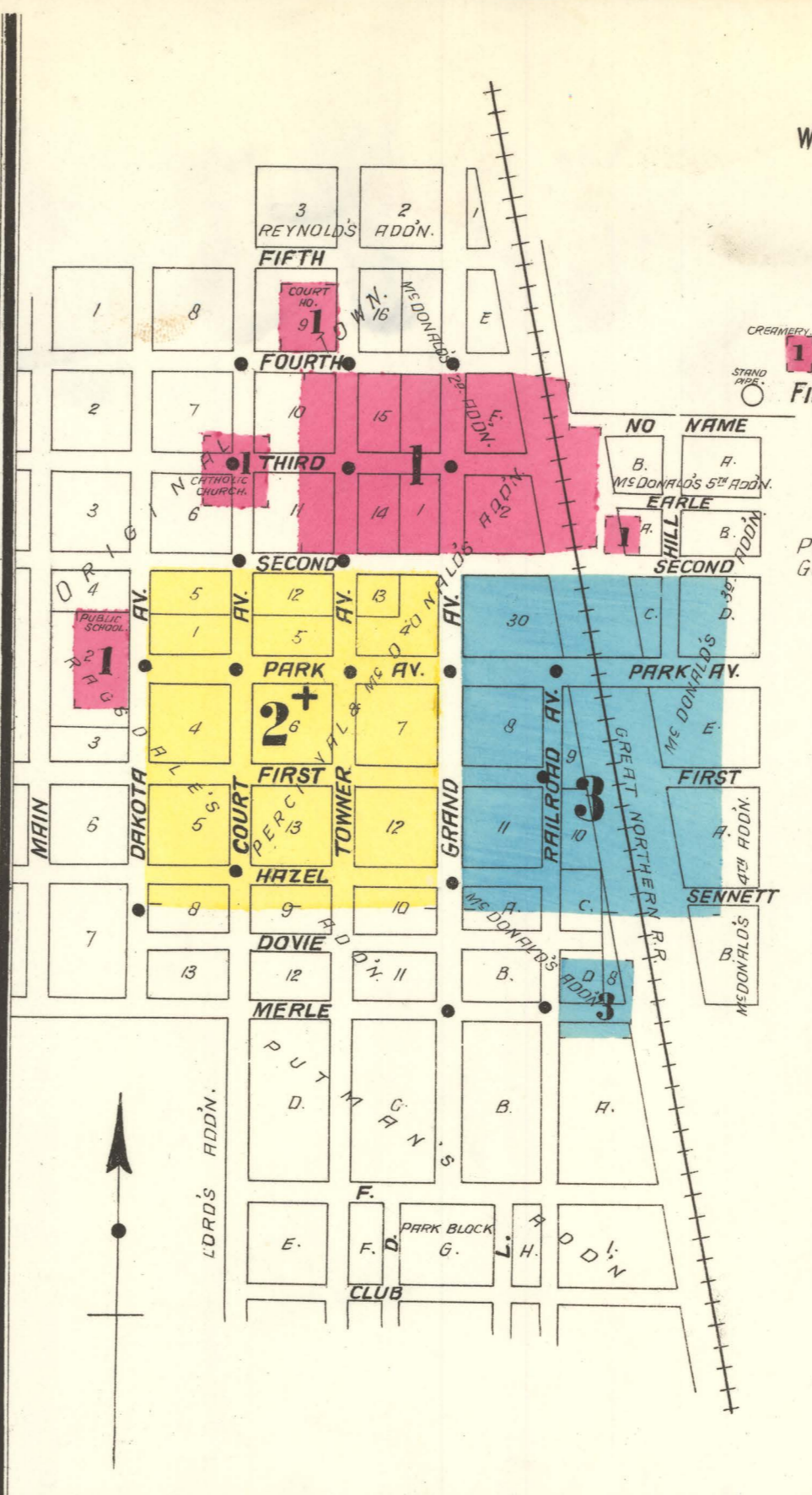
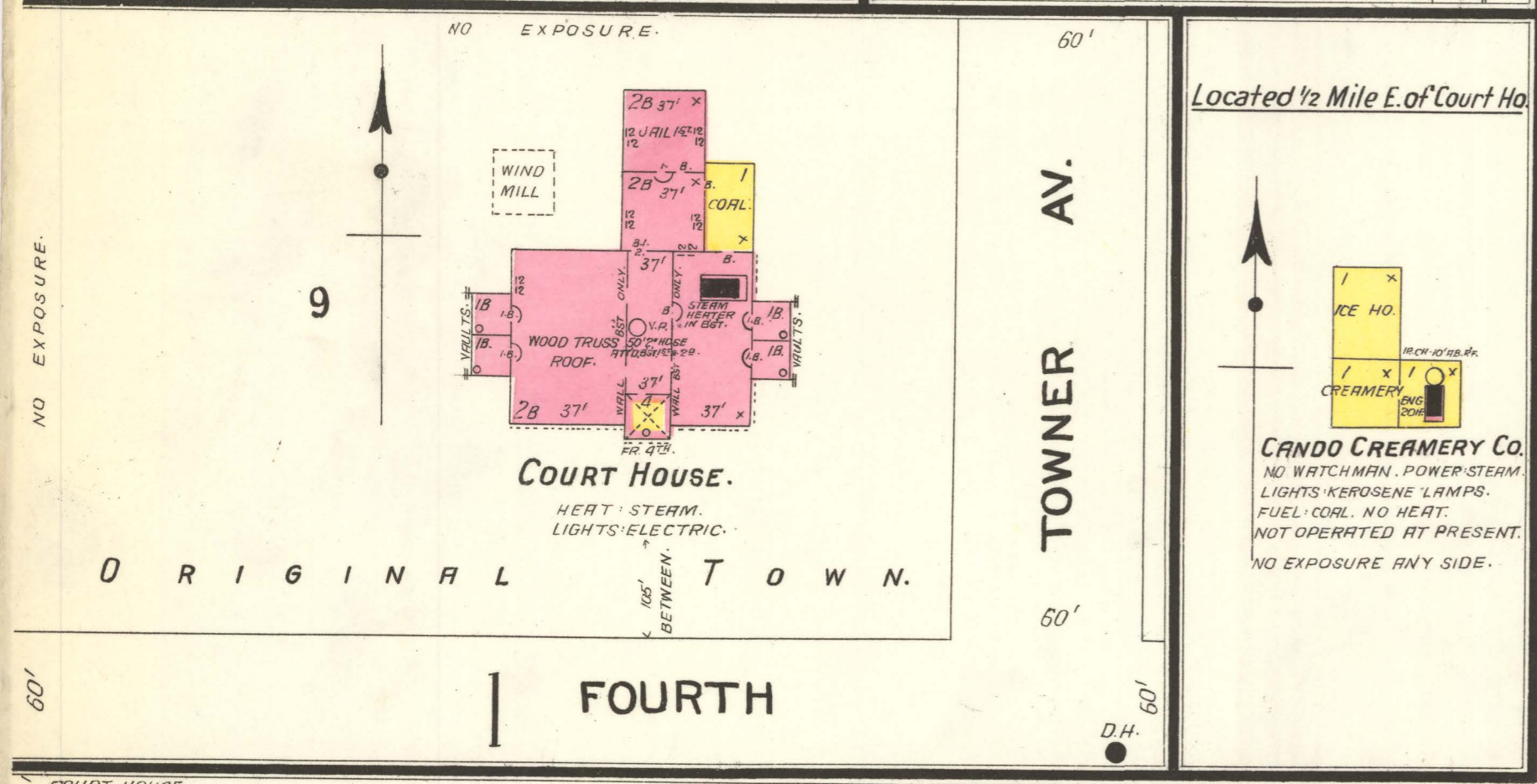
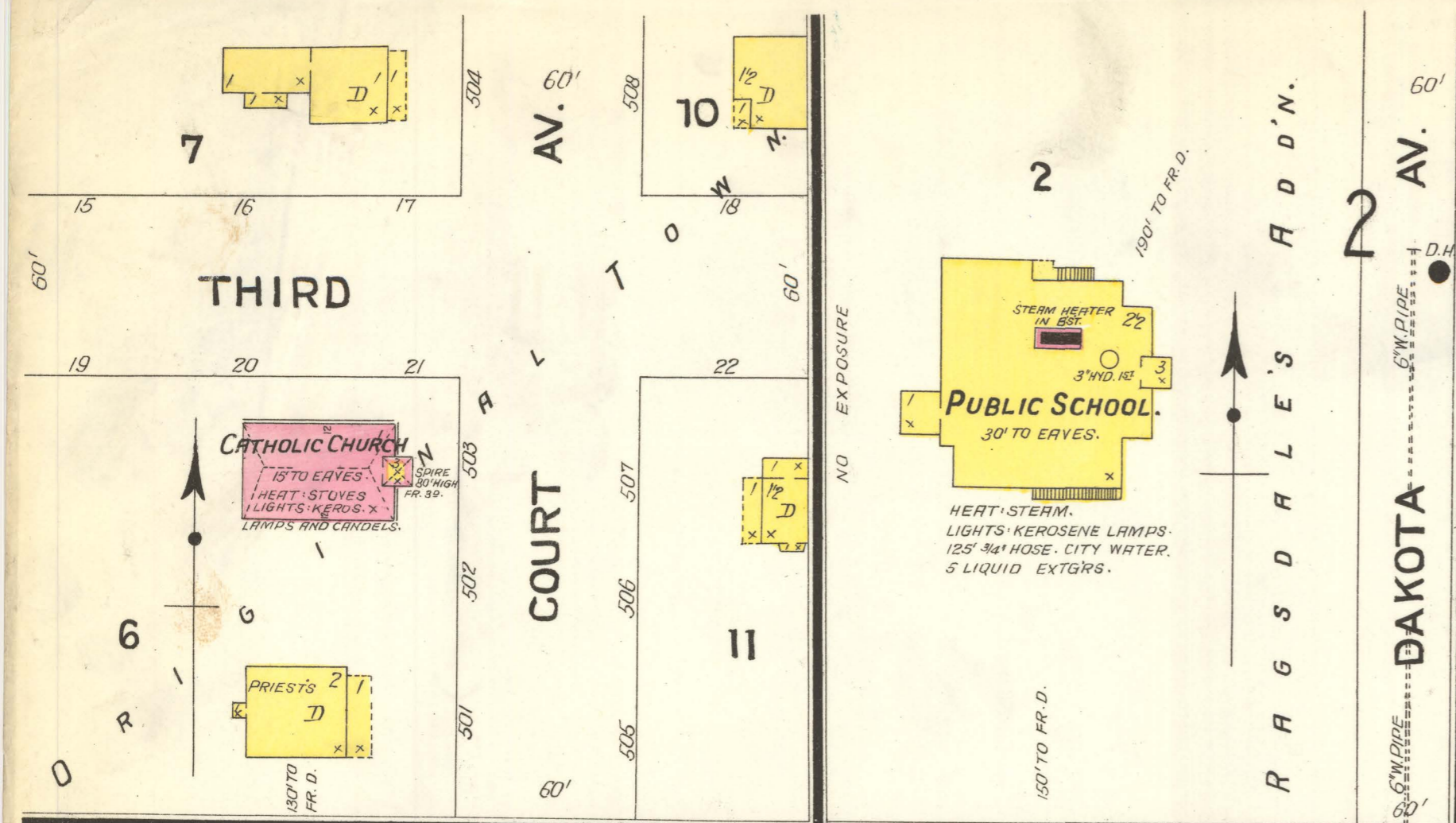
This Book is brought to you for free and open access by the Elwyn B. Robinson Department of Special Collections at UND Scholarly Commons. It has been accepted for inclusion in Sanborn Maps of North Dakota by an authorized administrator of UND Scholarly Commons. For more information, please contact und.common@library.und.edu.



WATER FACILITIES: Stand pipe and direct pressure system... FIRE DEPT: Volunteer, 40 men, 3 hose reels...

INDEX

Table listing special buildings and their locations, including Atlas Lumber Co., Cando Creamery Co., and various churches.



KEY: FIRE WALL, GIN, ASB ROOF, METAL CORNICE, SHINGLE ROOF, FIRE WALL, IRON ROOF, WOOD CORNICE, FIRE WALL, IRON ROOF, FRAME PARTITION DOOR, OPENING WITH IRON SHUTTERS, WINDOWS AND IRON SHUTTERS, WINDOW - 1ST STORY, WINDOWS 1ST & 2ND STORIES, 2ND & 4TH

Scale of Feet. 50 40 30 20 0 50 100 150