



8-1913

Bottineau, 1913

Sanborn Map Company

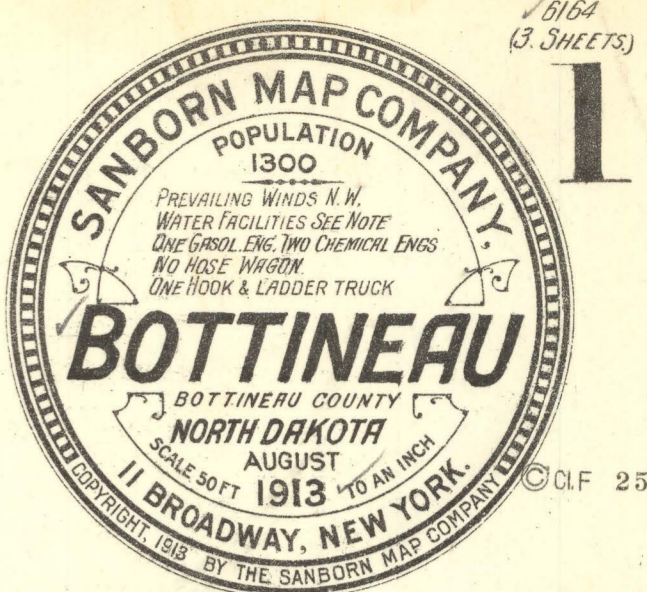
[How does access to this work benefit you? Let us know!](#)

Follow this and additional works at: <https://commons.und.edu/sanborn-maps>

Recommended Citation

Sanborn Map Company, "Bottineau, 1913" (1913). *Sanborn Maps of North Dakota*. 26.
<https://commons.und.edu/sanborn-maps/26>

This Book is brought to you for free and open access by the Elwyn B. Robinson Department of Special Collections at UND Scholarly Commons. It has been accepted for inclusion in Sanborn Maps of North Dakota by an authorized administrator of UND Scholarly Commons. For more information, please contact und.common@library.und.edu.



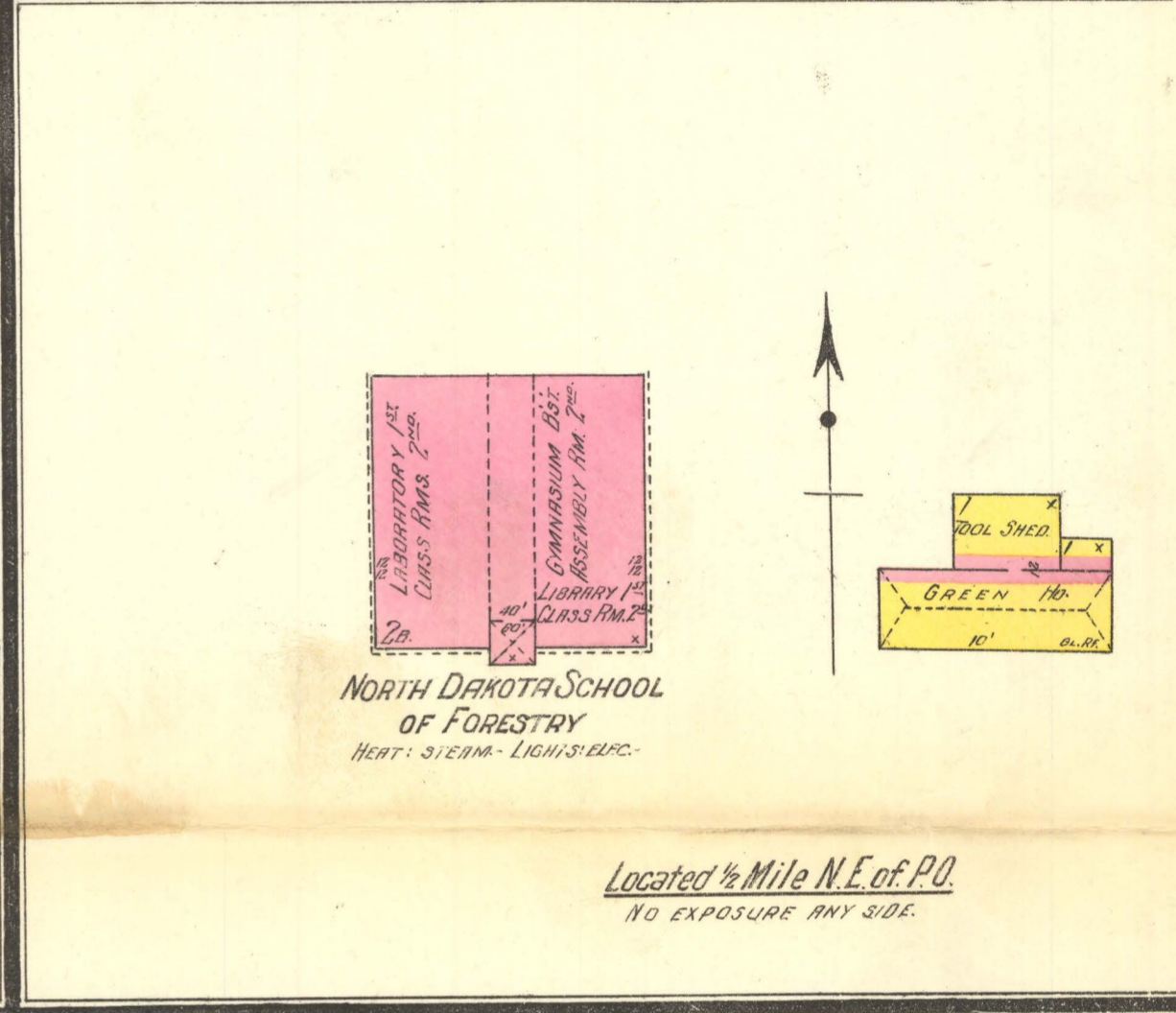
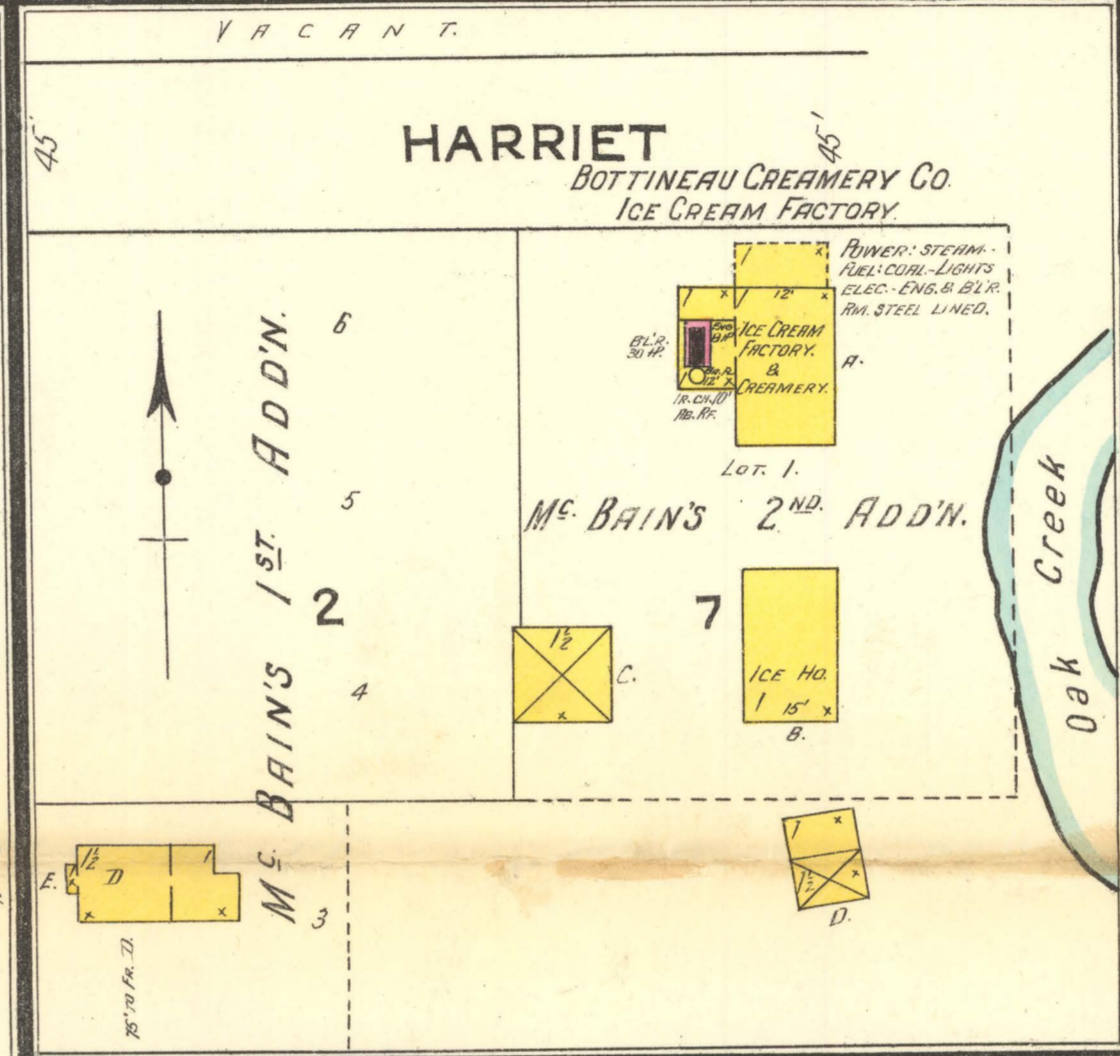
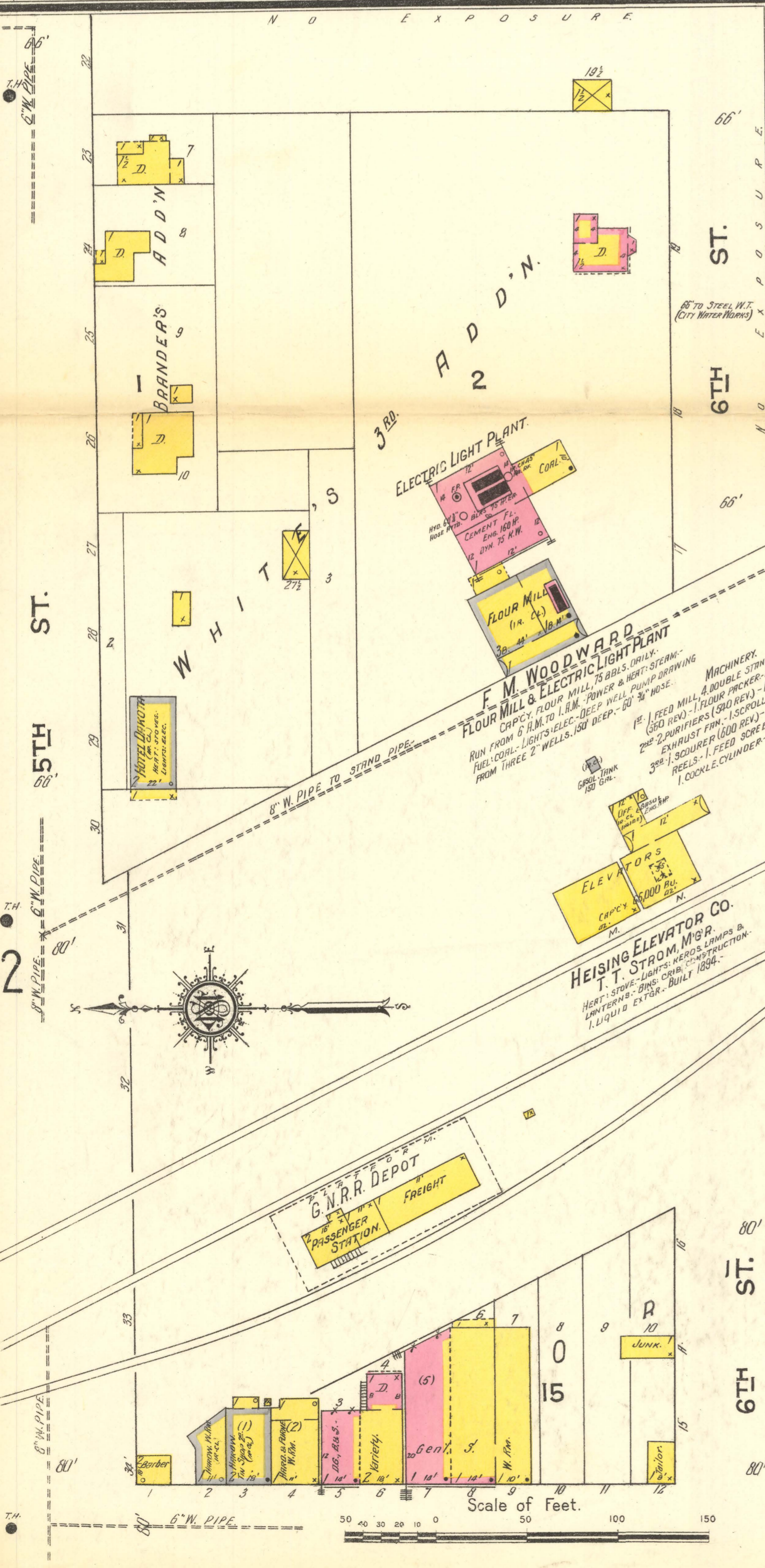
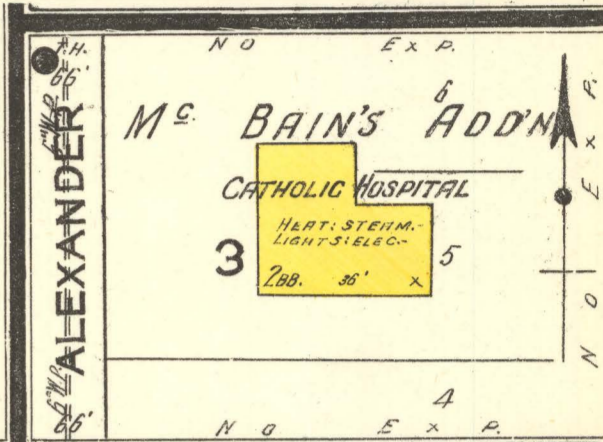
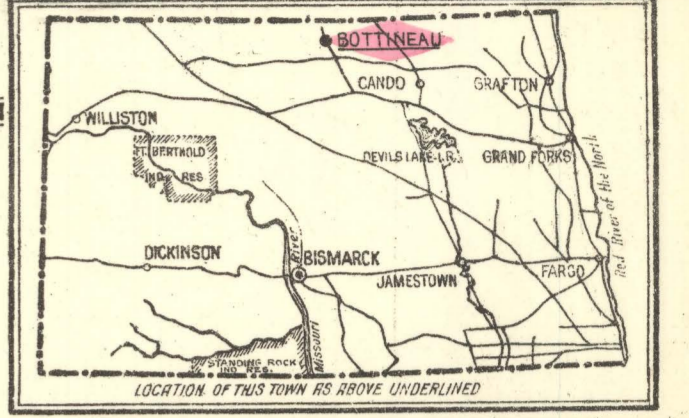
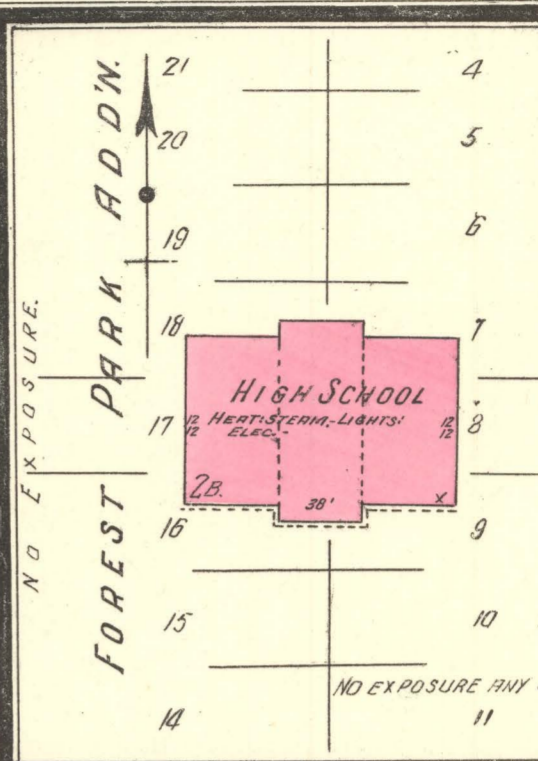
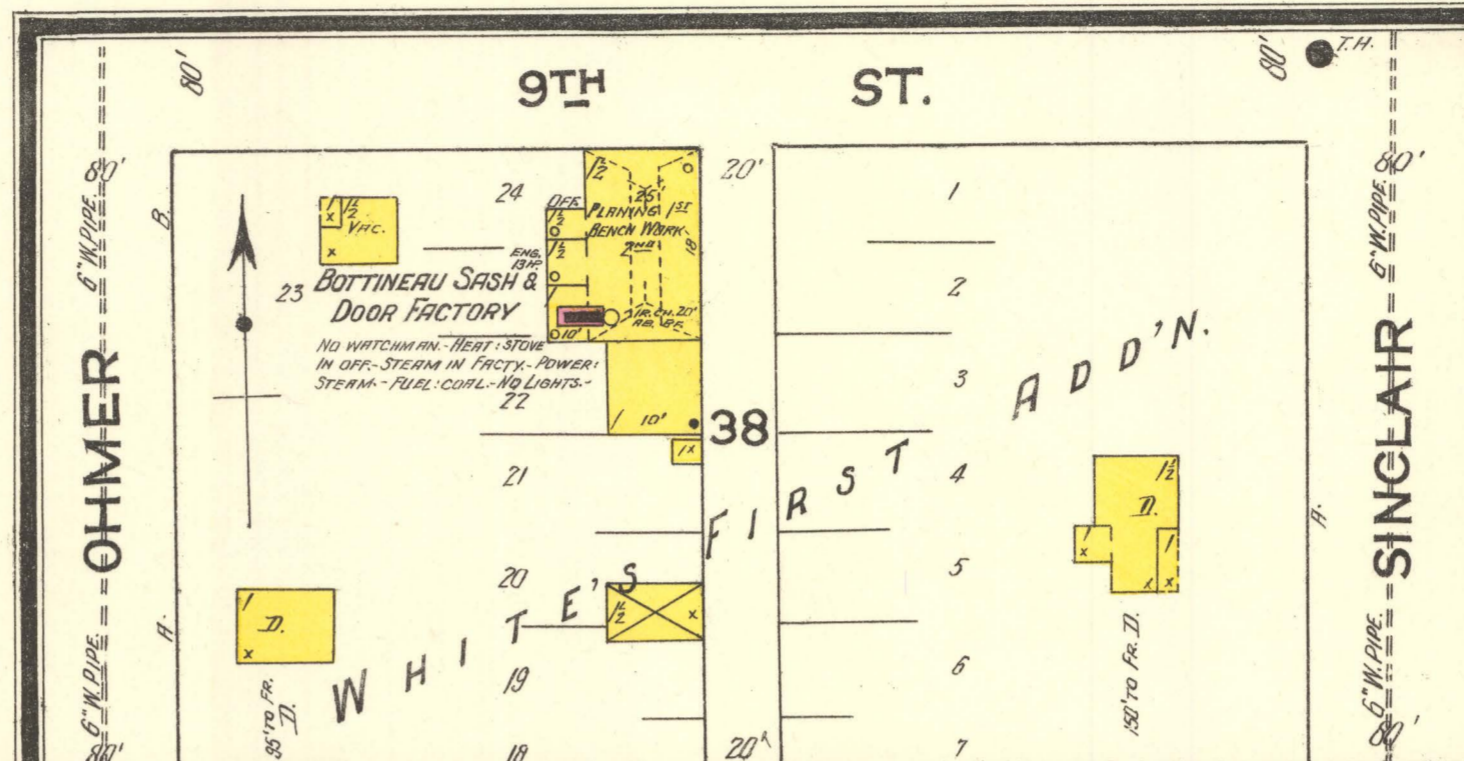
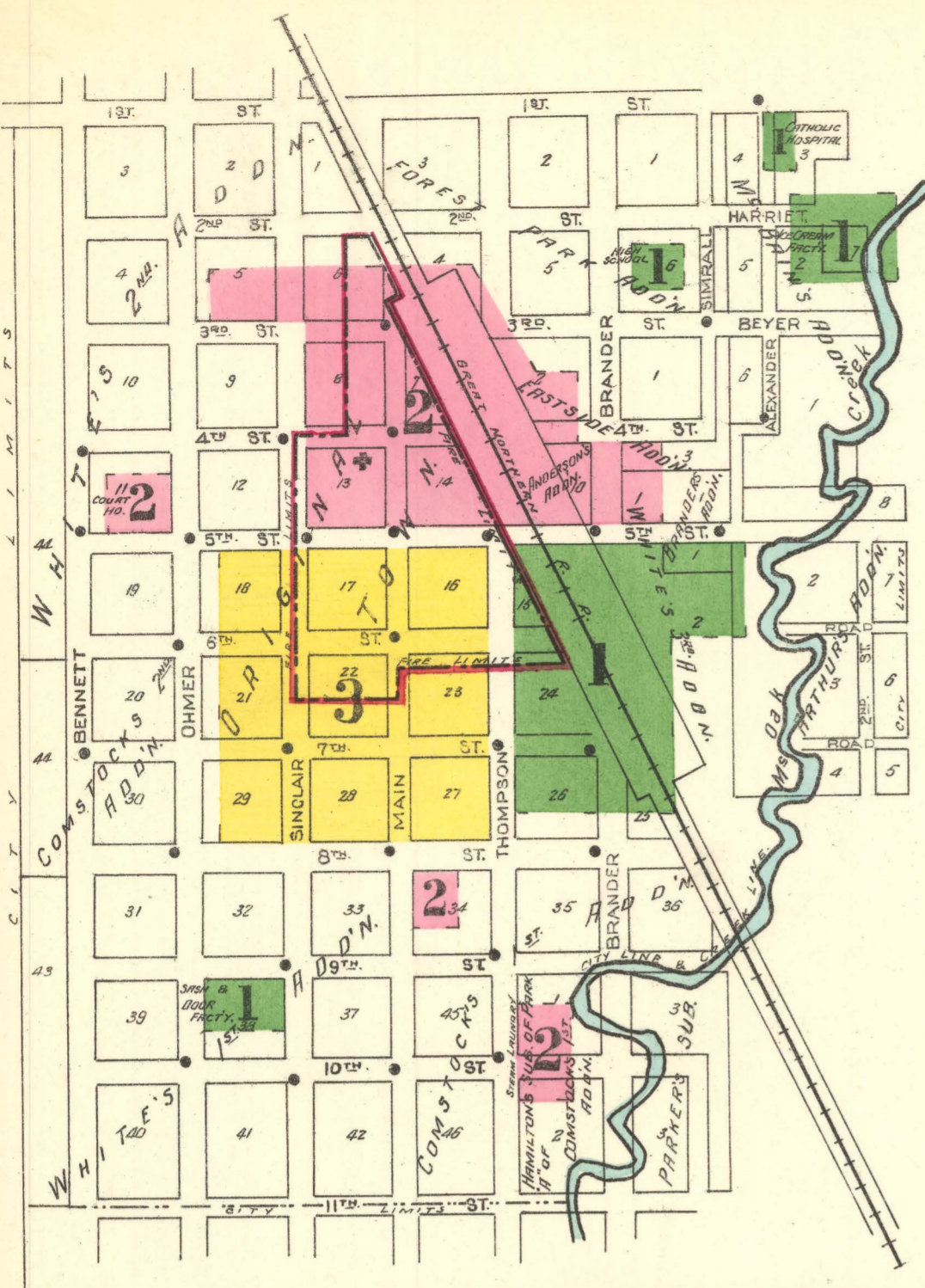
INDEX

SPECIALS		SHEET	SHEET		SHEET	
		B	H	P		
Bottineau Creamery Co., Ice Cr. M. Pl.	1	Heising Elevator Co.,	1	Piper-Howe Lumber Co.,	2	
Sash & Door Factory,	1	High School,	1	Post Office,	3	
Catholic Hospital,	1	Hotel Dakota,	1	Presbyterian Church,	3	
Commercial Hotel,	2			Public School,	3	
County Court House,	2					
Dana, H. C., Grain Elevator,	2					
Farmer's Elevator,	2					
Fire Department,	2					
First Baptist Church,	2					
G. N. R. R. Depot,	1					

WATER FACILITIES:
Gravity & direct pressure. Water from 2 wells 25' x 25' & 6' x 7' pumped by Platt triplex 5 1/2" x 8" F.P. run by 12HP gasol eng. capacity 600 gals per min. In 20000 gal. steel tank elev. 50 above business portion of town. Are a domestic pressure 40 lbs. Average daily consumption 20000 gals. 2 1/2 mile 6" & 8" mains. 28 triple hydrants system installed 1908-1910.

FIRE DEPT.:
Volunteer, 26 men. 1 Waterous gasol eng. 2 chem. engs. 20 & 45 gals capacity. 1 H. & L. truck. 1000 2 1/2" cotton hose. 180' 1" cotton hose for chem. engs. Apparatus all in good condition. Fire alarm. Siren whistle at Electric light plant.

Streets level, not paved. Public lights: elec.



KEY

Fire Wall on A.B.V. Roof	Fire Wall on Flat Roof
Metal Cornice	Wood Cornice
Composition of Slate on the Roof	Frame Partition
Opening with Iron Door	Iron Door
Standard Windows & Iron Shutters	Windows 1st Story
Windows 2nd & 3rd Stories	2nd & 3rd
Stable Buildings Colored Yellow	Are Frame
Blue	Stone
Gray	Iron
Brown	Fire Proof
(S) Indicate Relative Heights	
(+) Fire Station, as shown on Key Map	
(*) Fire Station Numbers are Actual	
(.) Consecutive Street Nos. are Arbitrary	

