



1-1908

Bismarck, 1908

Sanborn Map Company

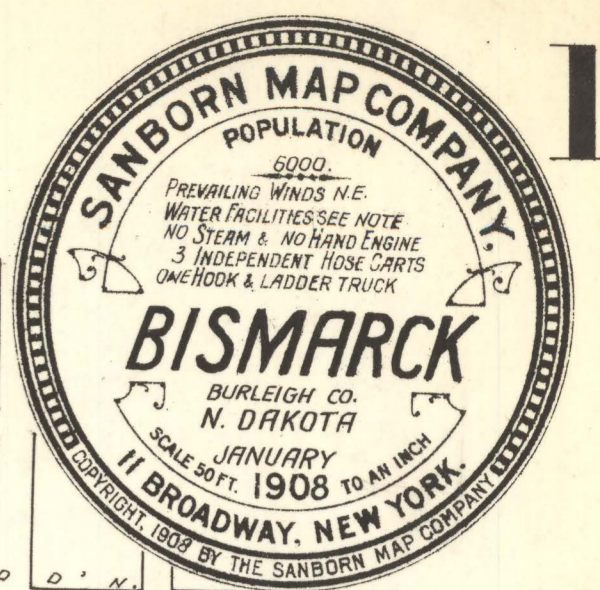
[How does access to this work benefit you? Let us know!](#)

Follow this and additional works at: <https://commons.und.edu/sanborn-maps>

Recommended Citation

Sanborn Map Company, "Bismarck, 1908" (1908). *Sanborn Maps of North Dakota*. 30.
<https://commons.und.edu/sanborn-maps/30>

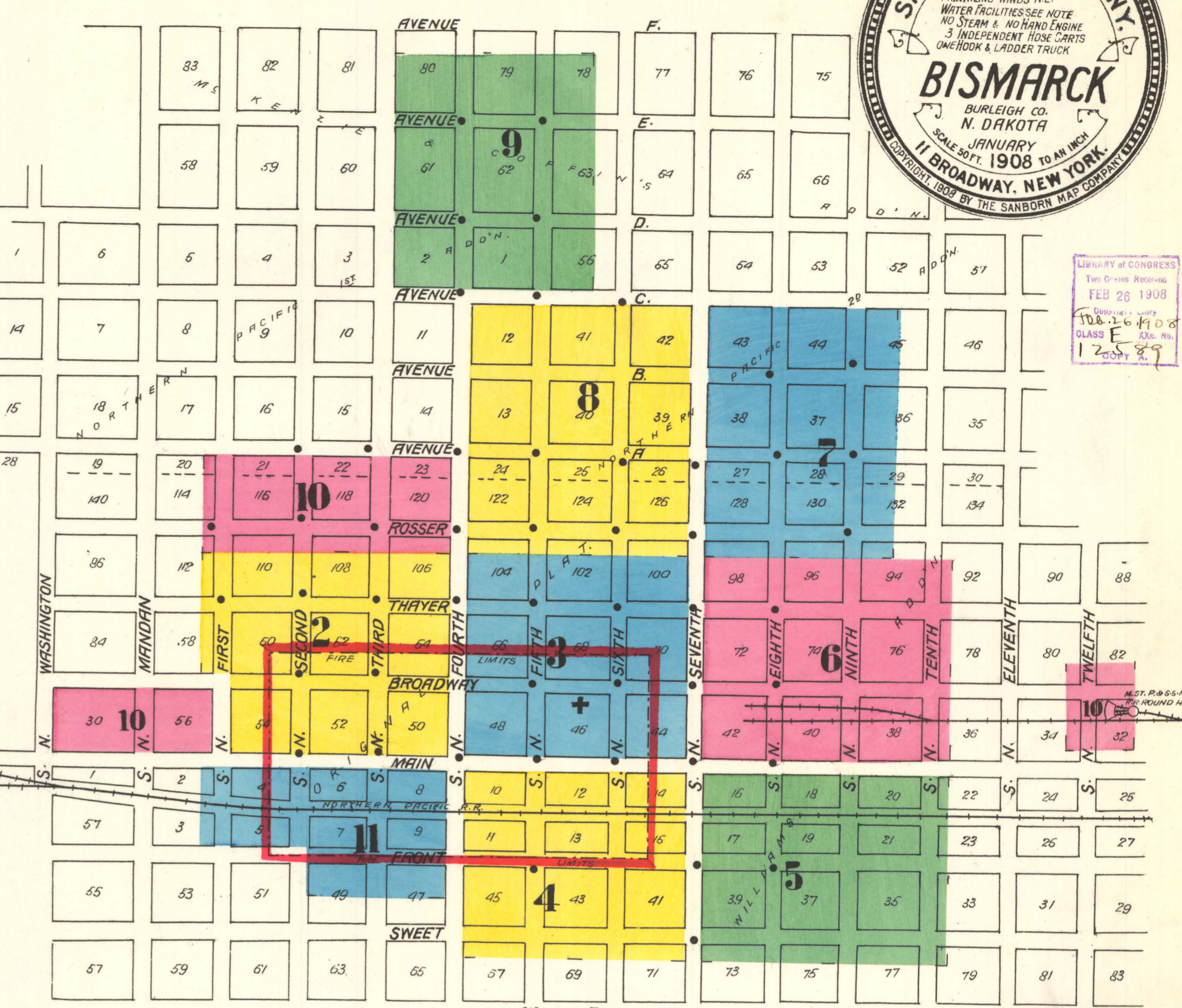
This Book is brought to you for free and open access by the Elwyn B. Robinson Department of Special Collections at UND Scholarly Commons. It has been accepted for inclusion in Sanborn Maps of North Dakota by an authorized administrator of UND Scholarly Commons. For more information, please contact und.common@library.und.edu.



INDEX

Table with columns for 'STREETS', 'SPECIALS', and 'INDEX'. Lists various streets (Avenue A, Broadway, etc.) and special buildings (Palace Hotel, etc.) with their corresponding map sheet numbers.

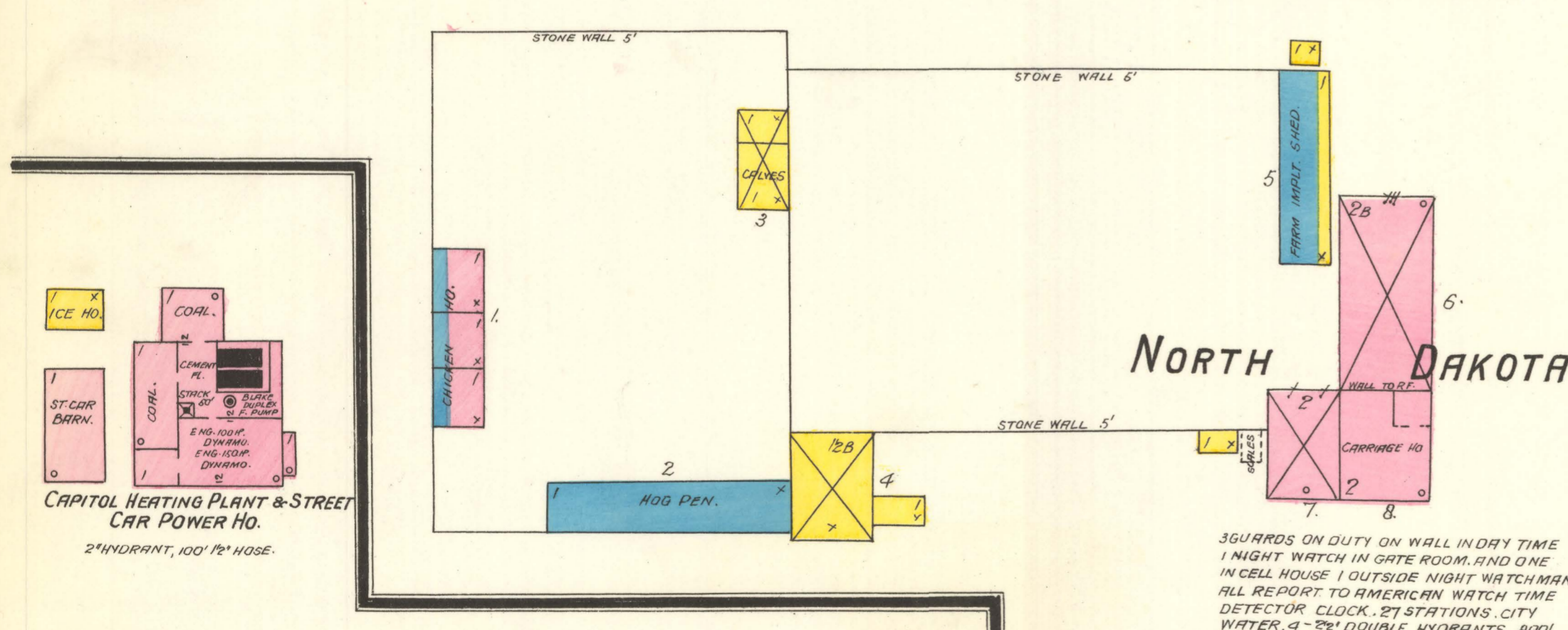
NOTE--* Indicates only one side of street shown.



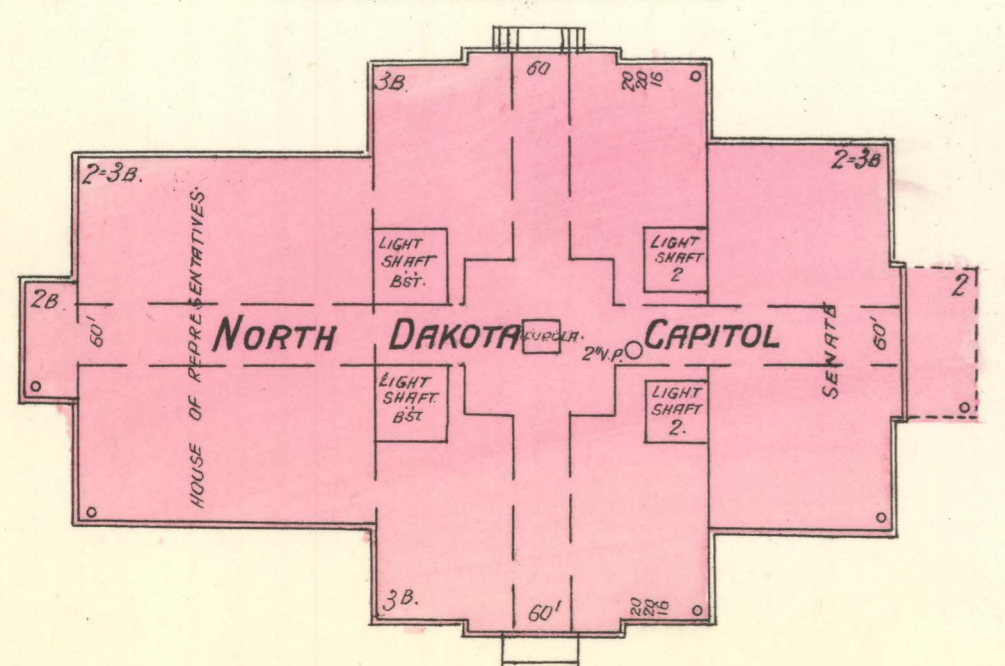
WATER FACILITIES: Supply from well, located 2 miles W. of town. 3 reservoirs with combined capacity of 7 million gals. located on bluff above Pumping Station and 1st business section. Fairbanks-Morse duplex steam fire pump 16x24x48 - domestic and fire pressure 85 lbs. Gravity pressure only. Average daily consumption 1,500,000 gals. 5 miles 4" to 10" water pipes, 56 double hydrants. To have at once additional pump of same size and manufacture as above and increased boiler capacity. Principal mains laid 1886.

FIRE DEPT: 45 men paid for fires attended, organized in 2 hose and 1 H. & L. company 3 hose carts, 1 H. & L. truck, 1800' 2 1/2" cotton hose. Fire alarm - whistle at electric light plant. Streets not paved. Town site practically level. Public lighting electric arc.

Located 2 Miles W. of P.O.



Located 1 Mile N.E. of P.O.



KEY: FIRE WALL 6 IN. ABOVE ROOF METAL CORNICE... BRICK BUILDINGS COLORED YELLOW ARE FRAME... RED BRICK, BLUE STONE, GRAY IRON, BROWN ADOBE, GREEN SPECIALS.

3 GUARDS ON DUTY ON WALL IN DRY TIME 1 NIGHT WATCH IN GATE ROOM, AND ONE IN CELL HOUSE 1 OUTSIDE NIGHT WATCHMAN ALL REPORT TO AMERICAN WATCH TIME DETECTOR CLOCK. 27 STATIONS CITY WATER, 4" 2" DOUBLE HYDRANTS, 800' 2 1/2" HOSE, 150' TO 300' AT EACH HYDRANT. NO EXPOSURE ANY SIDE.

NORTH DAKOTA PENITENTIARY.

