



11-1904

## Bismarck, 1904

Sanborn Map Company

[How does access to this work benefit you? Let us know!](#)

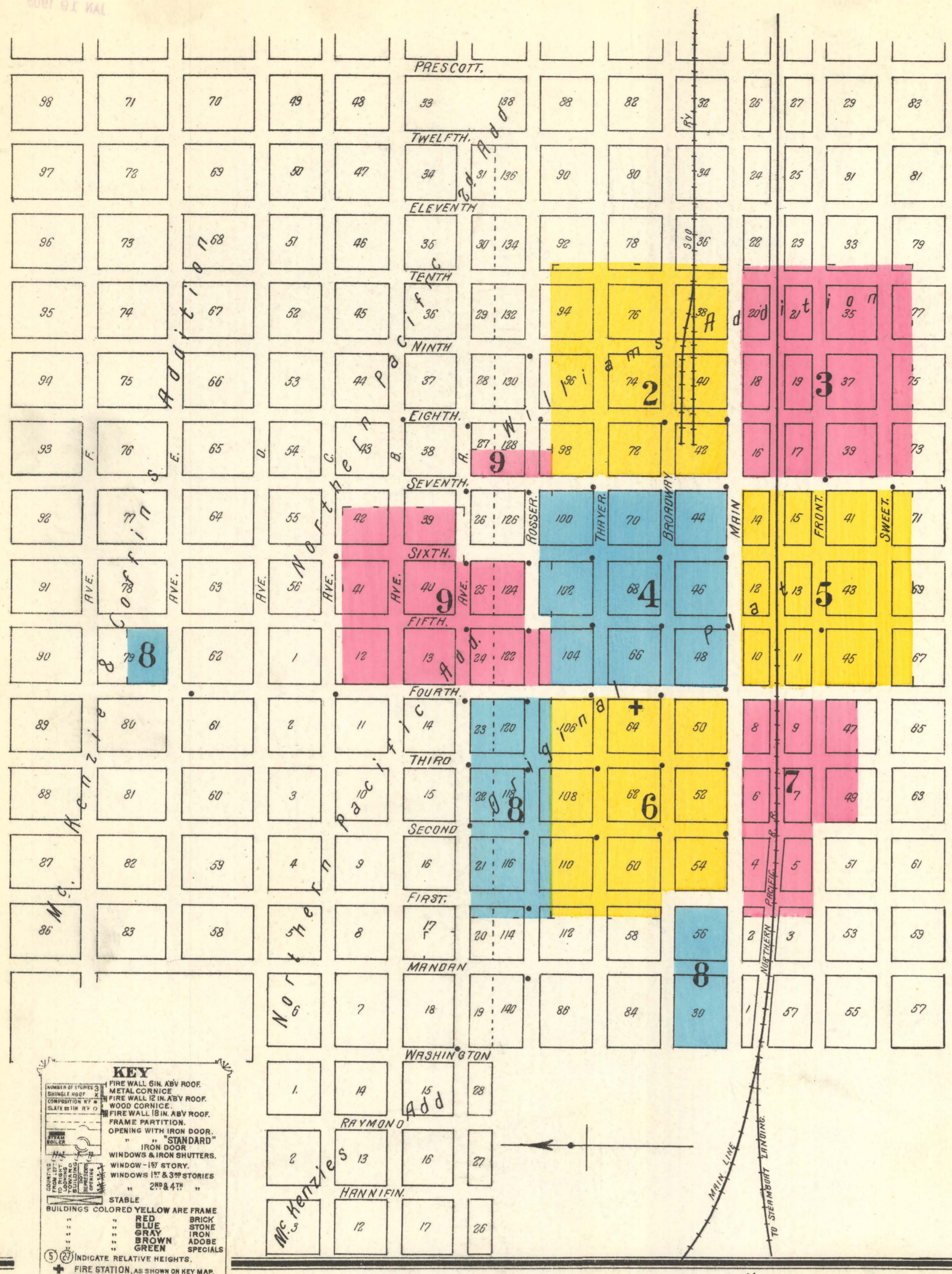
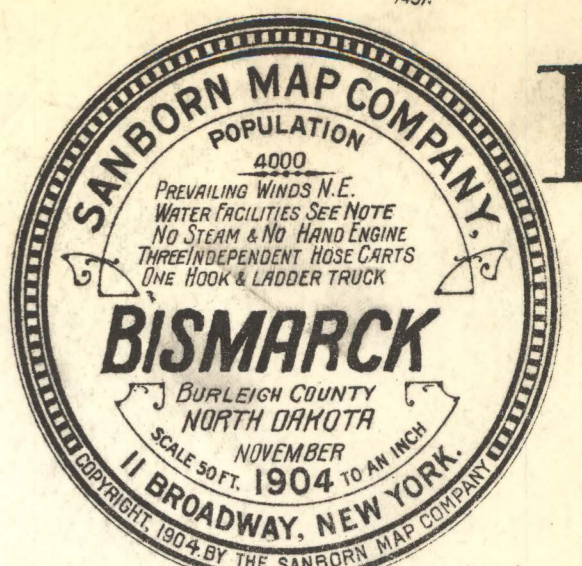
Follow this and additional works at: <https://commons.und.edu/sanborn-maps>

---

### Recommended Citation

Sanborn Map Company, "Bismarck, 1904" (1904). *Sanborn Maps of North Dakota*. 31.  
<https://commons.und.edu/sanborn-maps/31>

This Book is brought to you for free and open access by the Elwyn B. Robinson Department of Special Collections at UND Scholarly Commons. It has been accepted for inclusion in Sanborn Maps of North Dakota by an authorized administrator of UND Scholarly Commons. For more information, please contact [und.common@library.und.edu](mailto:und.common@library.und.edu).



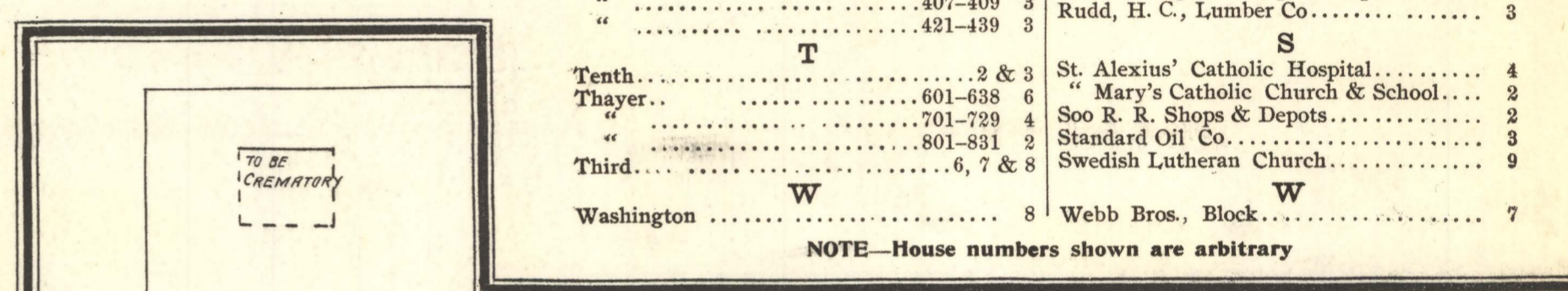
NOTE: WATER FACILITIES: WATER SUPPLY FROM MISSOURI RIVER, PUMPING STATION TWO MILES WEST OF TOWN...

THE LIBRARY OF CONGRESS... JAN 19 1905...

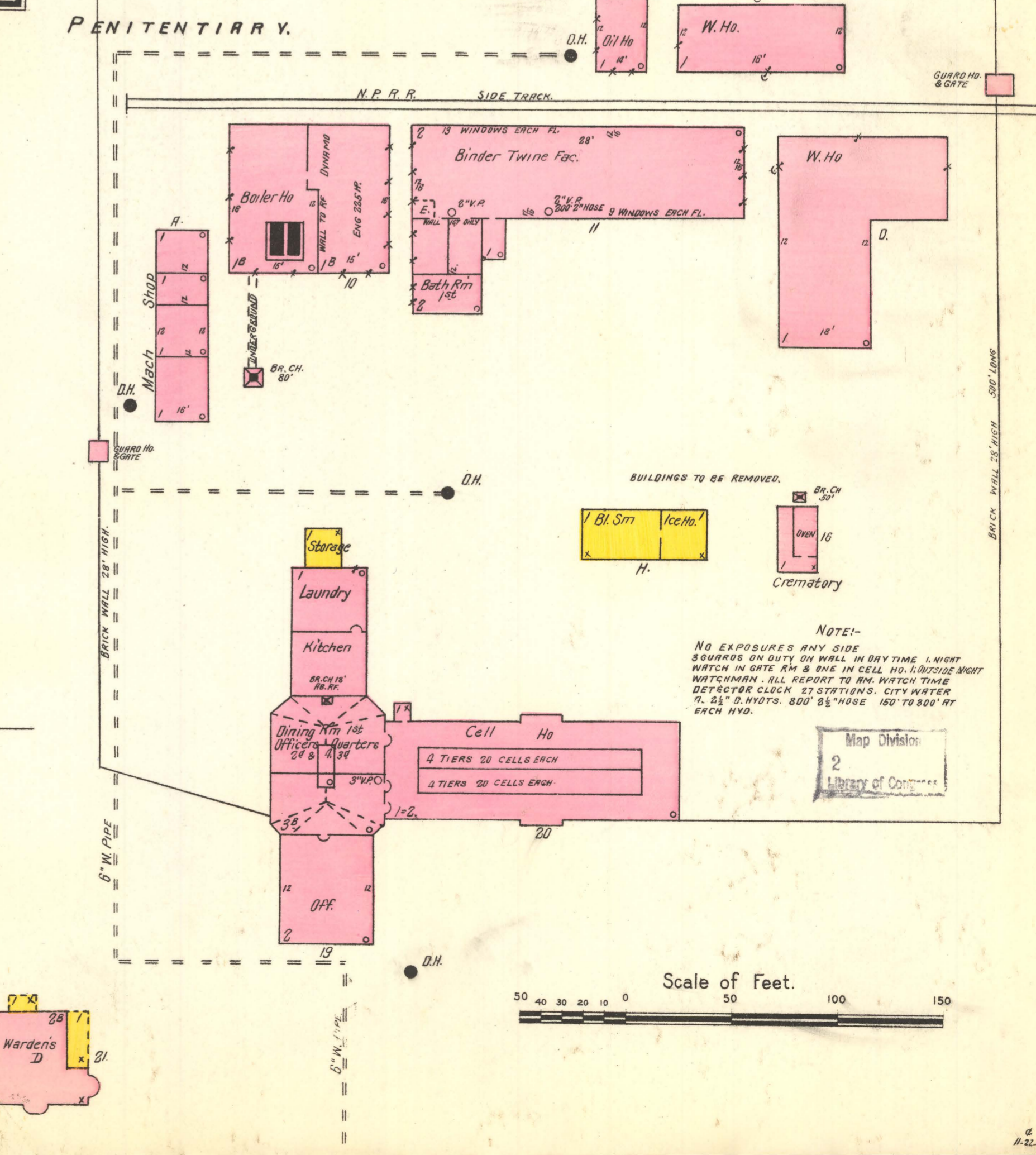
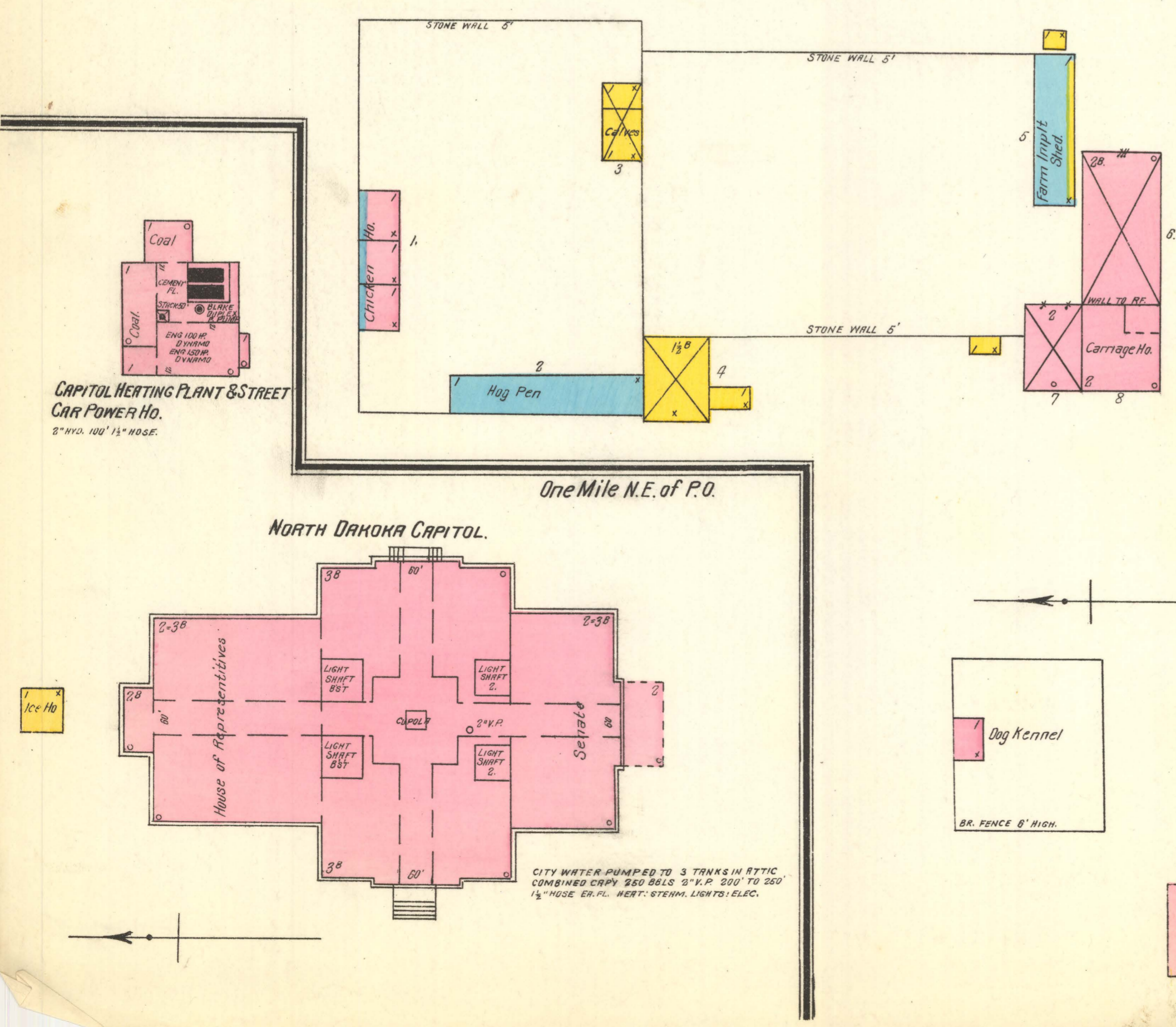
INDEX

Table with columns for STREETS, SPECIALS, and page numbers. Includes entries like Avenue A, Broadway, Eighth, Fifth, First, Fourth, Front, Main, Mandan, Ninth, Rosser, Second, Seventh, Sixth, Sweet, Tenth, Third, Washington, and Webb Bros. Block.

KEY: FIRE WALL IN AVY ROOF, METAL CORNICE, FRAME PARTITION, OPENING WITH IRON DOOR, IRON DOOR, WINDOWS & IRON SHUTTERS, WINDOW - 1ST STORY, WINDOWS 1ST & 3RD STORIES, 2ND & 4TH, STABLE, BUILDINGS COLORED YELLOW ARE FRAME BRICK, BLUE STONE, IRON, BROWN ADDBE, GREEN SPECIALS, INDICATE RELATIVE HEIGHTS, FIRE STATION, AS SHOWN ON KEY MAP, ALTERNATE STREET NUMBERS ARE ACTUAL, CONSECUTIVE STREET NUM ARE ARBITRARY.



2 Miles W. of P.O.



NOTE: NO EXPOSURES ANY SIDE, SQUARES ON DUTY ON WALL IN DAYTIME, NIGHT WATCH IN ONE AM & ONE IN CELL HO., INSIDE NIGHT WATCHMAN, ALL REPORT TO W. W. W. TIME DETECTOR CLOCK AT STATIONS, CITY WATER 7 1/2" HO. 800 BS HOSE 150 TO 800 FT EACH H.W.

