



8-1899

Bismarck, 1899

Sanborn Map Company

[How does access to this work benefit you? Let us know!](#)

Follow this and additional works at: <https://commons.und.edu/sanborn-maps>

Recommended Citation

Sanborn Map Company, "Bismarck, 1899" (1899). *Sanborn Maps of North Dakota*. 32.
<https://commons.und.edu/sanborn-maps/32>

This Book is brought to you for free and open access by the Elwyn B. Robinson Department of Special Collections at UND Scholarly Commons. It has been accepted for inclusion in Sanborn Maps of North Dakota by an authorized administrator of UND Scholarly Commons. For more information, please contact und.common@library.und.edu.

COPIES RECEIVED
OFFICE OF
CITY ENGINEER
OCT 8 0 1899
Number of Copies

SANBORN - PERRIS MAP CO. LIMITED
117 & 119 Broadway
NEW YORK

Population 4000
No Steam & No Hand Engines
3 Independent Horse Carts
Water Facilities See Note

Prevailing Winds N.E.
BISMARCK
Burleigh Co. N. Dak.
AUG. 1899
SCALE 50 FT. TO AN INCH.
COPYRIGHT 1899 BY THE SANBORN - PERRIS MAP COMPANY

Oct. 28, 1899 70408

RECEIVED IN THE
CITY ENGINEER'S OFFICE
JAN 29 1900
Map of Bismarck

NOTE.

Water Works:-
SUPPLY FROM MISSOURI RIVER.
PUMPING STATION TWO MILES WEST OF TOWN.
RESERVOIRS NEAR BY ON THE BLUFFS.
105' ABOVE PUMP HO. AND 140' ABOVE MAIN ST.
CAPACITY OF RESERVOIRS 300,000 GALS. EACH.
ONE DUPLX DUPLEX STEAM P. PUMP.
CAP. 1 1/2 MILLION GALS. PER DAY.
PRESSURE ALONG MAIN ST. 60 LBS.
3 1/2 MILES ON 4" 5" AND 10" WATER MAINS.
46 DOUBLE 2 1/2" INDS.

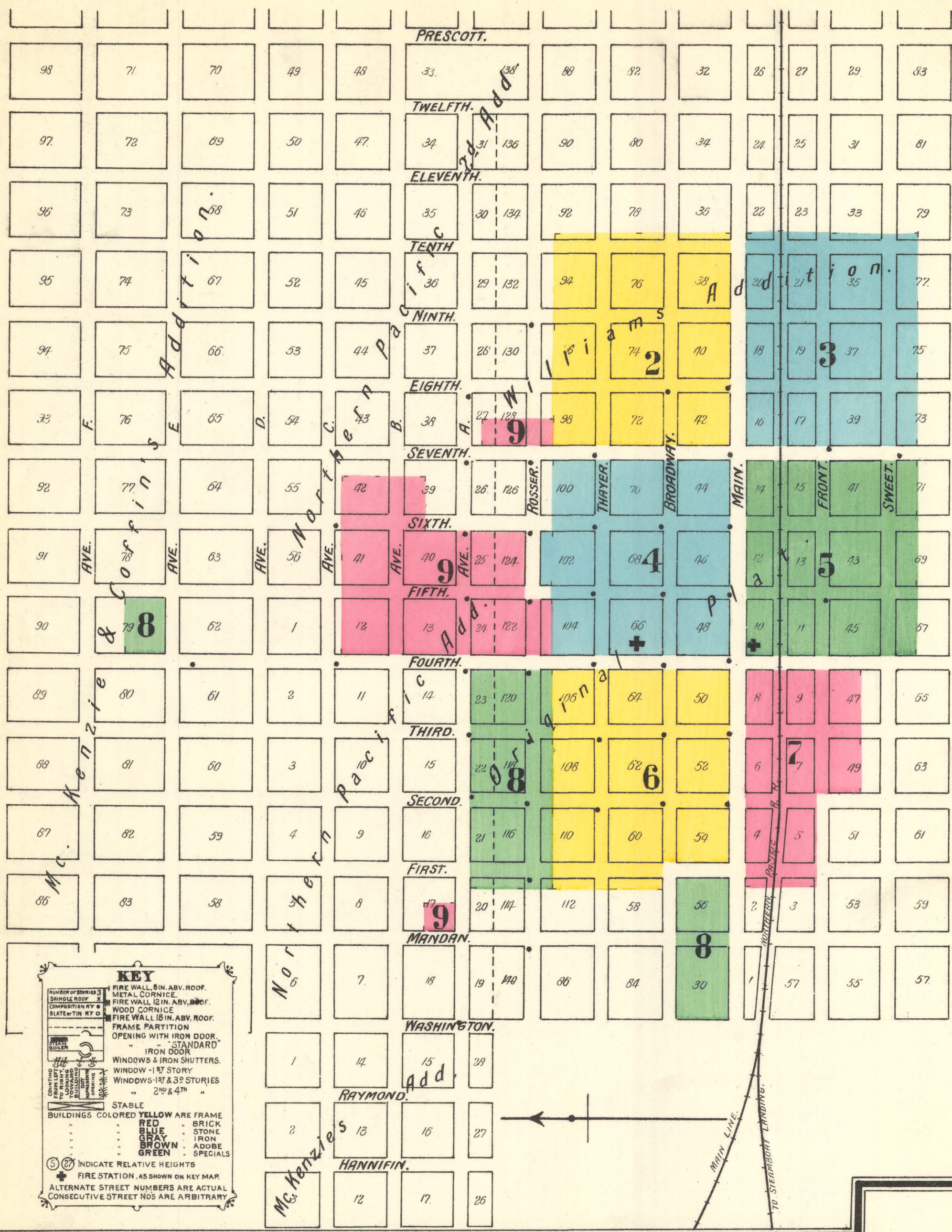
Fire Dept:-
VOLUNTEER
80 MEMBERS.
3 HOSE CARTS.
1000' 3/4" HOSE.
1 LADDER AND LADDER TRUCK.
1 DOUBLE TRINK (100 GAL. EACH) CHEMICAL ENG.

STREETS NOT PAVED.
TOWN SITE SLOPING SLIGHTLY TOWARDS MISSOURI RIVER.
LIGHTS; ELECTRIC AND COAL OIL.
FUEL; WOOD AND COAL.

INDEX.

STREETS.	SHEET	SPECIALS.	SHEET
Avenue A,	8 & 9	Anderson Block,	6
" B,	9	Banner Hotel,	6
Broadway,	401-414 8	Baptist Church,	9
"	601-615 2	Bismarck Atheneum,	4
"	701-711 2	" Electric Light Works,	6
"	712-716 2	" Elevator Co.,	3
"	717-725 4	" Water Works,	7
"	726-729 2	Blatz, V., Beer Depot,	5
"	801-810 6	County Court House,	4
"	811-814 4	Daily Tribune Printing,	6
"	815-822 6	Dakota Block,	6
"	823-828 4	Episcopal Church,	9
"	901-909 6	Field Lumber Co.,	5
Eighth,	2 & 3	First National Bank Block,	6
Fifth,	4, 5 & 9	Franklin House,	9
First,	401-414 8	Glineburg & Lovin, Wood Works,	4
"	601-615 2	Grand Pacific Hotel,	4
"	701-711 2	Gull River Lumber Co.,	3
"	712-716 2	Houglund, J. P., Lumber-yard,	5
"	717-725 4	Hughes, A., Electric Light Works,	6
"	726-729 2	Methodist Episcopal Church,	4
"	801-810 6	Milwaukee Brewing Co.,	7
"	811-814 4	Missouri Valley Milling Co.,	3
"	815-822 6	North Dakota Capitol,	1
"	823-828 4	" Penitentiary,	1
"	901-909 6	N. P. R. R. Freight Depot,	5
Main,	101-115 8	" Ice-house,	3
"	201-210 5	" River Landing Warehouse,	7
"	301-322 7	North Side School,	8
"	401-506 5	Presbyterian Church,	6
"	507-511 3	Public School, Fifth Street,	9
"	512-525 5	River Navigation Repair Shops,	7
"	526-543 3	St. Alexius' Catholic Hospital,	4
Mandan,	8	" Mary's Catholic Church,	2
Ninth,	2 & 3	Sheridan House,	5
Rosser,	8 & 9	Standard Oil Co.,	3
Second,	6, 7 & 8	Swedish Lutheran Church,	9
Seventh, East Side,	2, 3 & 9	Tribune Printing,	6
" West "	4 & 5	Webb Bros. Block,	7
Sixth,	4, 5 & 9	Western Hotel,	4
Sweet,	201-204 5		
"	401-406 5		
"	407-409 3		
"	421-439 3		
Tenth,	2 & 3		
Thayer,	601-638 6		
"	701-729 4		
"	801-831 2		
Third,	6, 7 & 8		
Washington,	8		

NOTE.—HOUSE NUMBERS given are arbitrary.

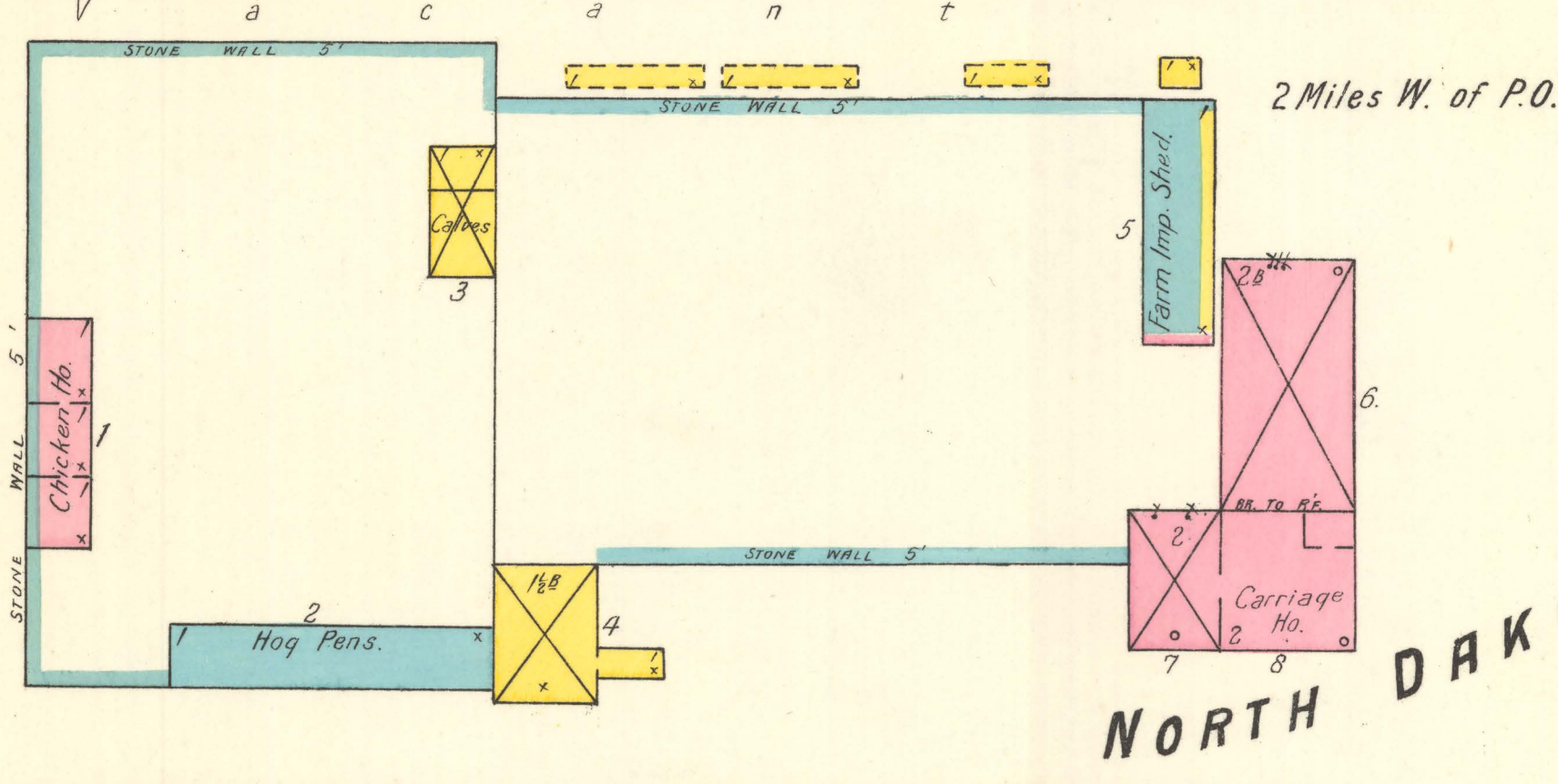


KEY

FIRE WALL IN ABV. ROOF.
METAL CORNICE.
FIRE WALL IN ABV. ROOF.
WOOD CORNICE.
FIRE WALL IN ABV. ROOF.
FRAME PARTITION
OPENING WITH IRON DOOR.
STANDARD
IRON DOOR.
WINDOWS & IRON SHUTTERS.
WINDOW—1 1/2 STORY
WINDOWS—1 1/2 & 3 1/2 STORIES
2 1/2 & 4 1/2

STABLE
BUILDINGS COLORED YELLOW ARE FRAME
BRICK
RED
STONE
BLUE
BROWN
ADDBE
GREEN
SPECIALS

INDICATE RELATIVE HEIGHTS
FIRE STATION, AS SHOWN ON KEY MAR.
ALTERNATE STREET NUMBERS ARE ACTUAL
CONSECUTIVE STREET NOS ARE ARBITRARY

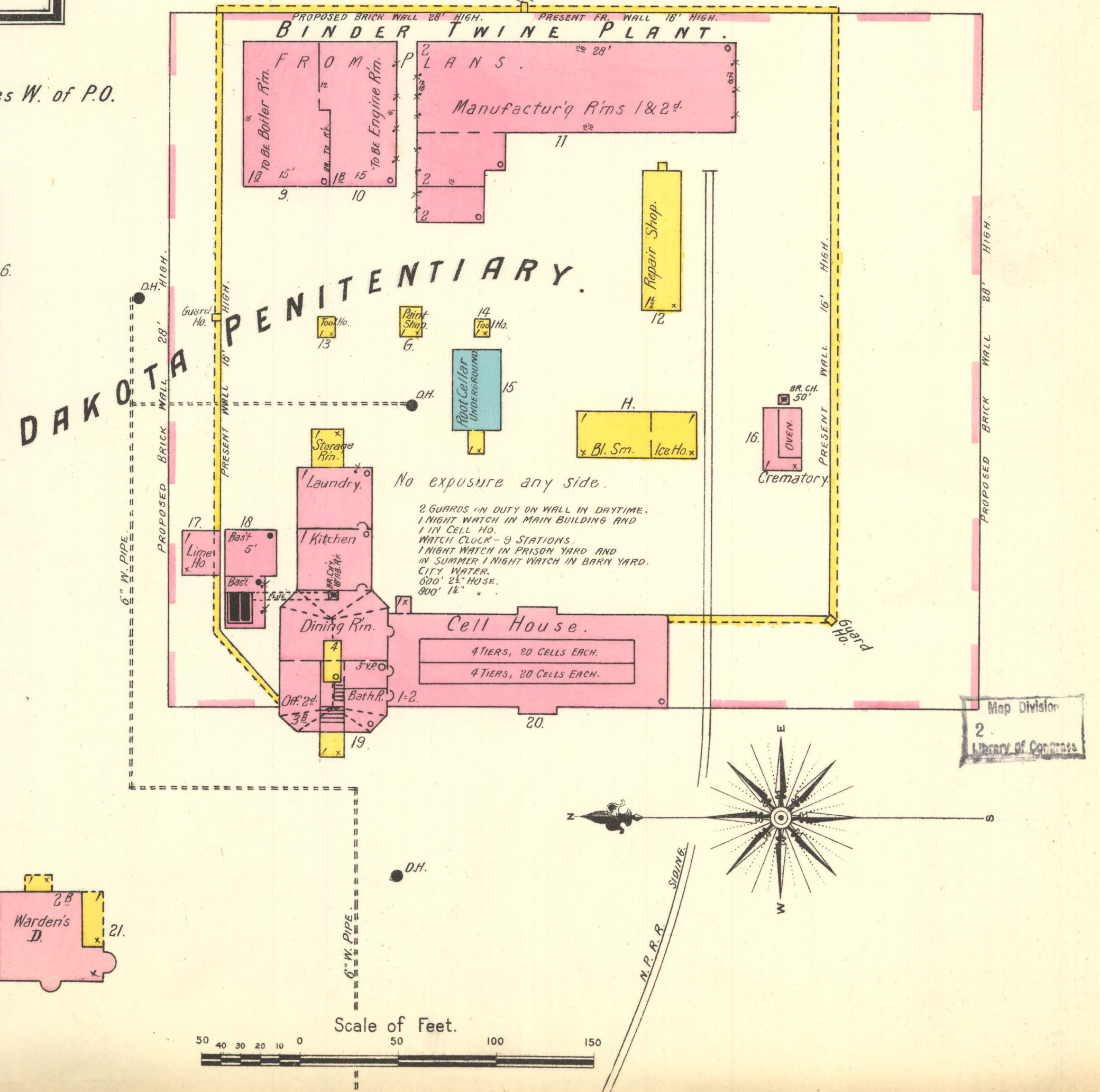


NORTH DAKOTA CAPITOL.

1 Mile N.E. of P.O.

CITY WATER PUMPED TO THREE
TANKS IN BTTIC. COMBINED CAPACITY
250 BARRELS.
3" VERT. PIPE AND 800' TO 850' 1/2"
HOSE EACH FL.
HEAT: STEAM.
LIGHTS: ELEC.

No exposure any side.



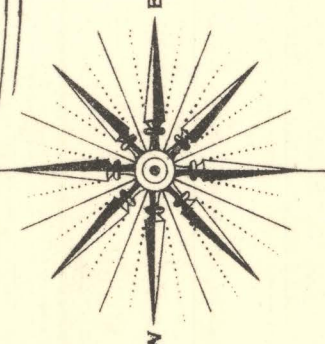
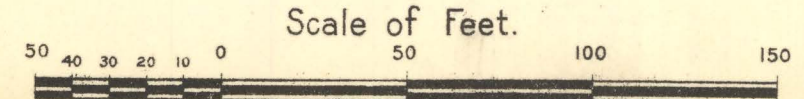
NORTH DAKOTA PENITENTIARY.

2 Miles W. of P.O.

No exposure any side.

2 GUARDS IN DUTY ON WALL IN DAYTIME.
1 NIGHT WATCH IN MAIN BUILDING AND
1 IN CELL HO.
WATCH CLOCK—9 STATIONS.
1 NIGHT WATCH IN PRISON YARD AND
IN SUMMER 1 NIGHT WATCH IN BATH YARD.
CITY WATER.
200' 2 1/2" HOSE.
300' 1 1/2"

Scale of Feet.



Map Division
2
Library of Congress