



12-1904

Portland, 1904

Sanborn Map Company

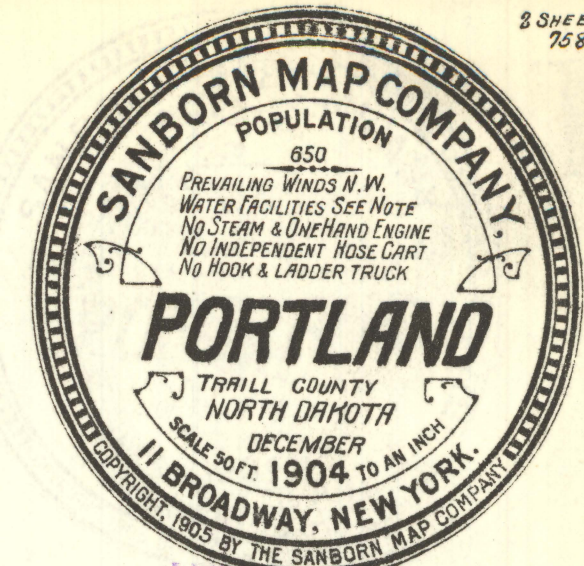
Follow this and additional works at: <https://commons.und.edu/sanborn-maps>

[How does access to this work benefit you? Let us know!](#)

Recommended Citation

Sanborn Map Company, "Portland, 1904" (1904). *Sanborn Maps of North Dakota*. 15.
<https://commons.und.edu/sanborn-maps/15>

This Book is brought to you for free and open access by the Elwyn B. Robinson Department of Special Collections at UND Scholarly Commons. It has been accepted for inclusion in Sanborn Maps of North Dakota by an authorized administrator of UND Scholarly Commons. For more information, please contact und.common@library.und.edu.

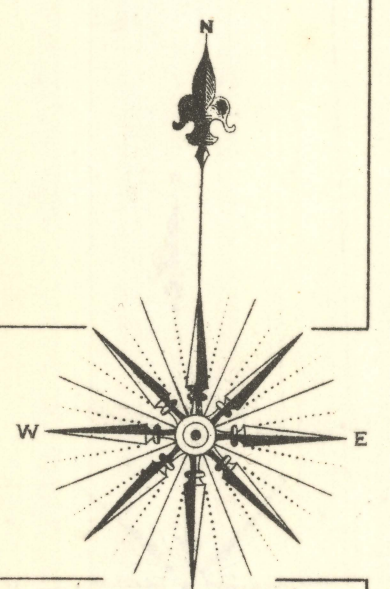


KEY

THICK LINE: FIRE WALL, 6 IN. ASV. ROOF
THIN LINE: FIRE WALL, 12 IN. ASV. ROOF
DOTTED LINE: FIRE WALL, 18 IN. ASV. ROOF
SOLID LINE: FRAME PARTITION
OPENING WITH IRON DOOR
"STANDARD" IRON DOOR
WINDOWS & IRON SHUTTERS
WINDOW - 17' & 39' STORIES
WINDOWS 17' & 39' STORIES
29' & 41' "

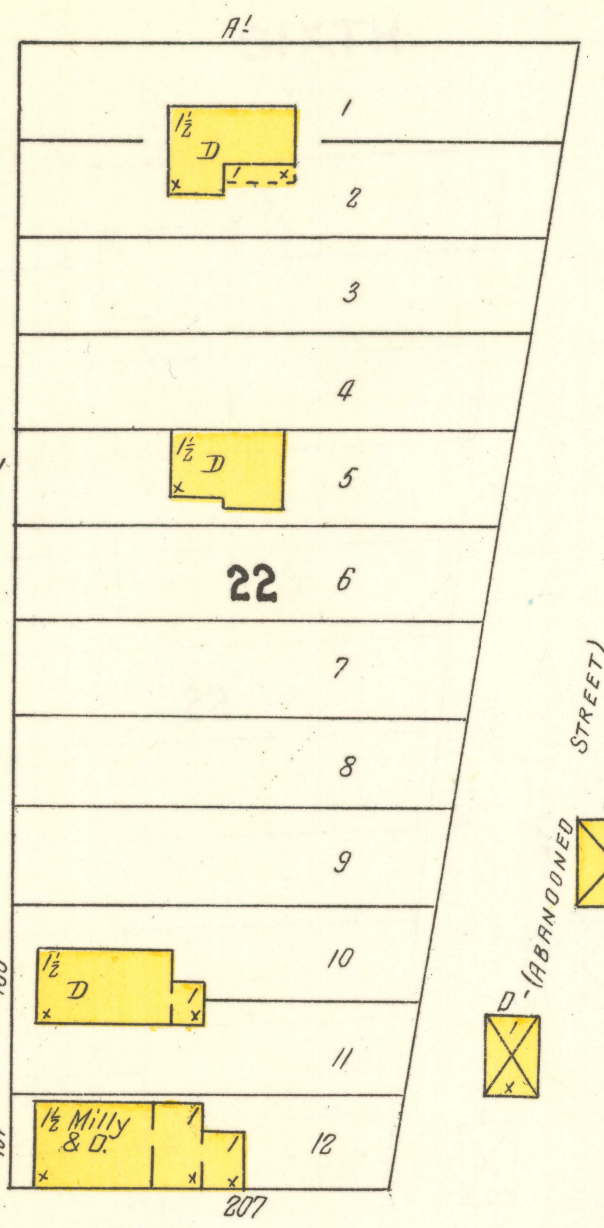
STABLE
BUILDINGS COLORED YELLOW ARE FRAME
RED: BRICK
BLUE: STONE
GRAY: IRON
BROWN: ADOBE
GREEN: SPECIALS

⑤ ⑥ INDICATE RELATIVE HEIGHTS
FIRE STATION, AS SHOWN ON KEY MAP
ALTERNATE STREET NUMBERS ARE ACTUAL
CONSECUTIVE STREET NOS ARE ARBITRARY

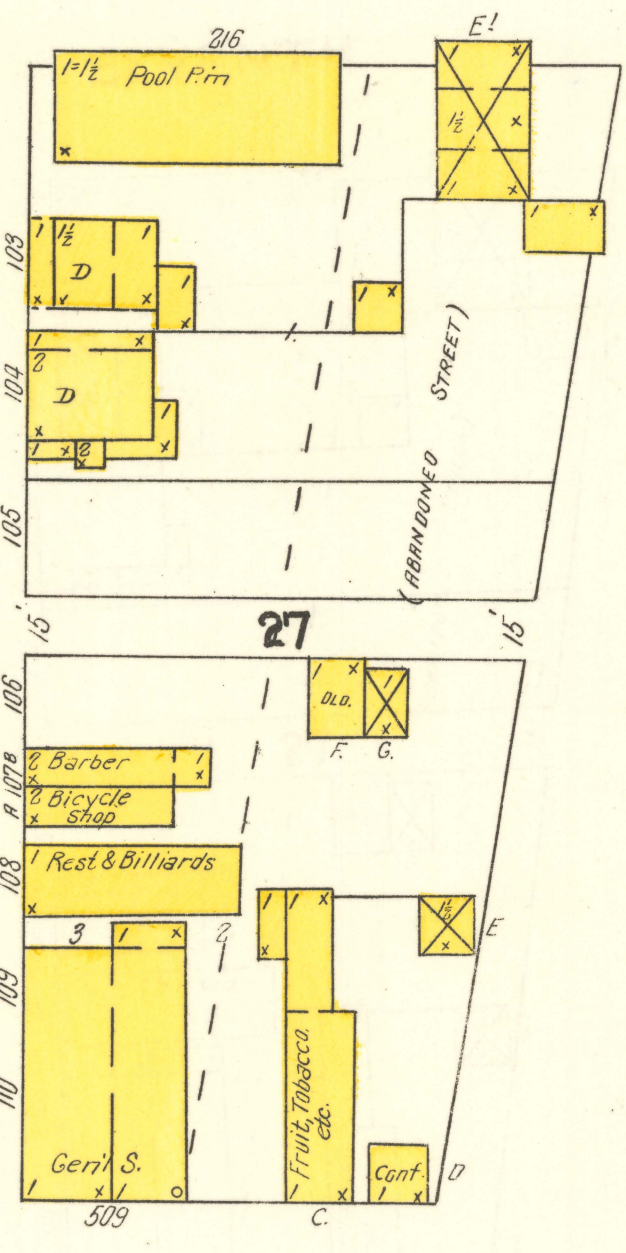


AV.

SIXTH



SEVENTH



ARNOLD

(ABANDONED STREET)

(ABANDONED STREET)

PARK AV.

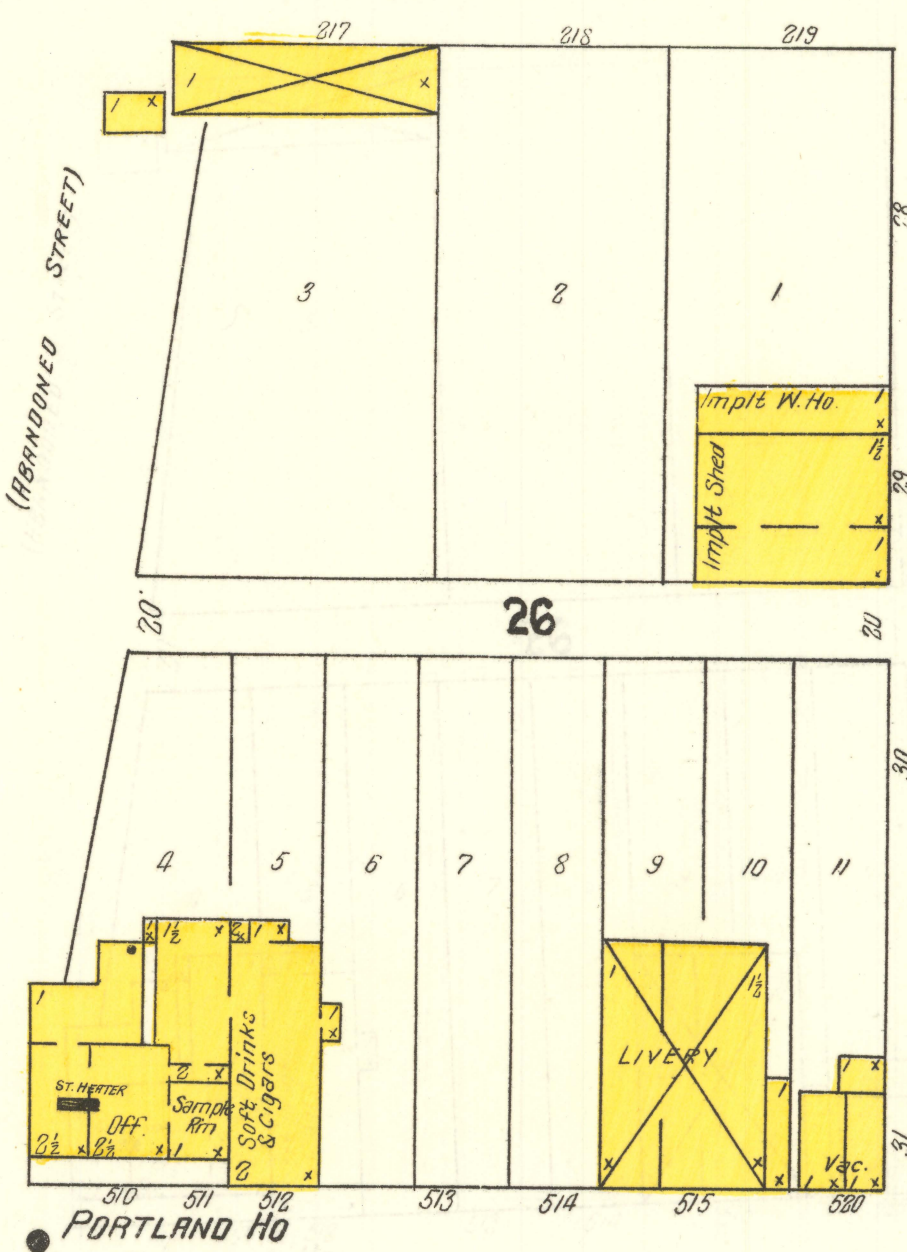
ST. ANTHONY & DAKOTA ELEVATOR CO.
COPPER, SODIUM, IRON, LEAD, ZINC, AND OTHER MINERALS
POWER, GRAIN, AND LUMBER

CARGILL ELEVATOR CO.
COPPER, SODIUM, IRON, LEAD, ZINC, AND OTHER MINERALS
POWER, GRAIN, AND LUMBER

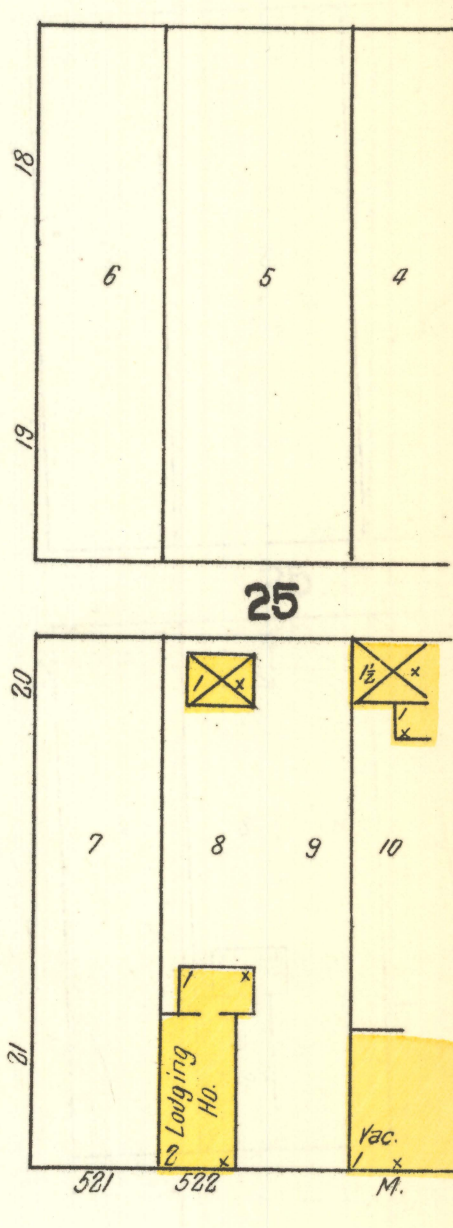
INDEPENDENT ELEVATOR CO.
COPPER, SODIUM, IRON, LEAD, ZINC, AND OTHER MINERALS
POWER, GRAIN, AND LUMBER

FEDERAL ELEVATOR CO.
COPPER, SODIUM, IRON, LEAD, ZINC, AND OTHER MINERALS
POWER, GRAIN, AND LUMBER

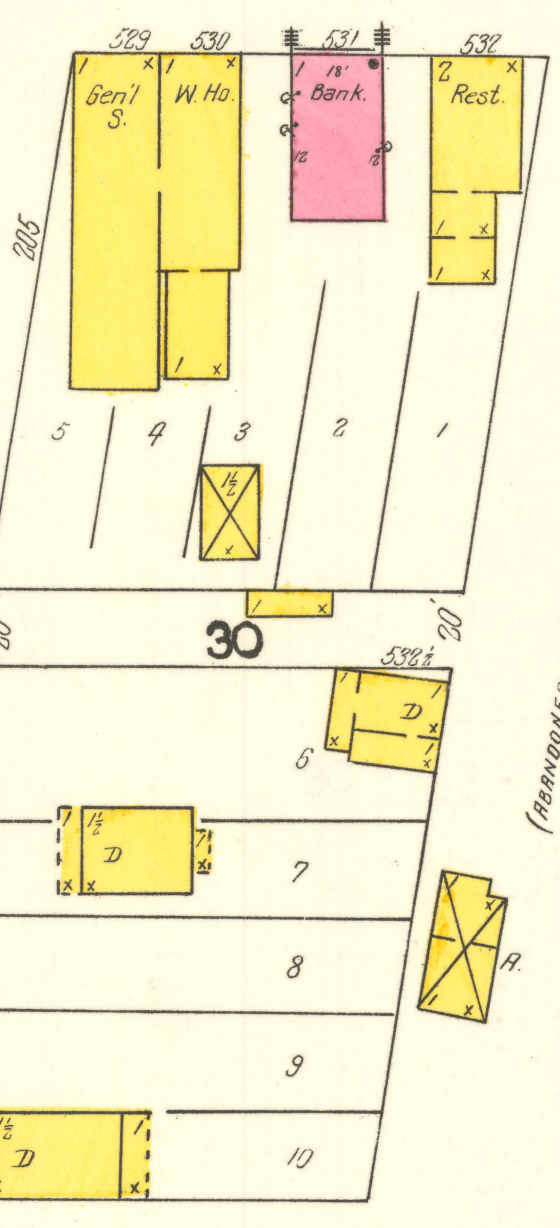
SEVENTH



JAH



BENNETT



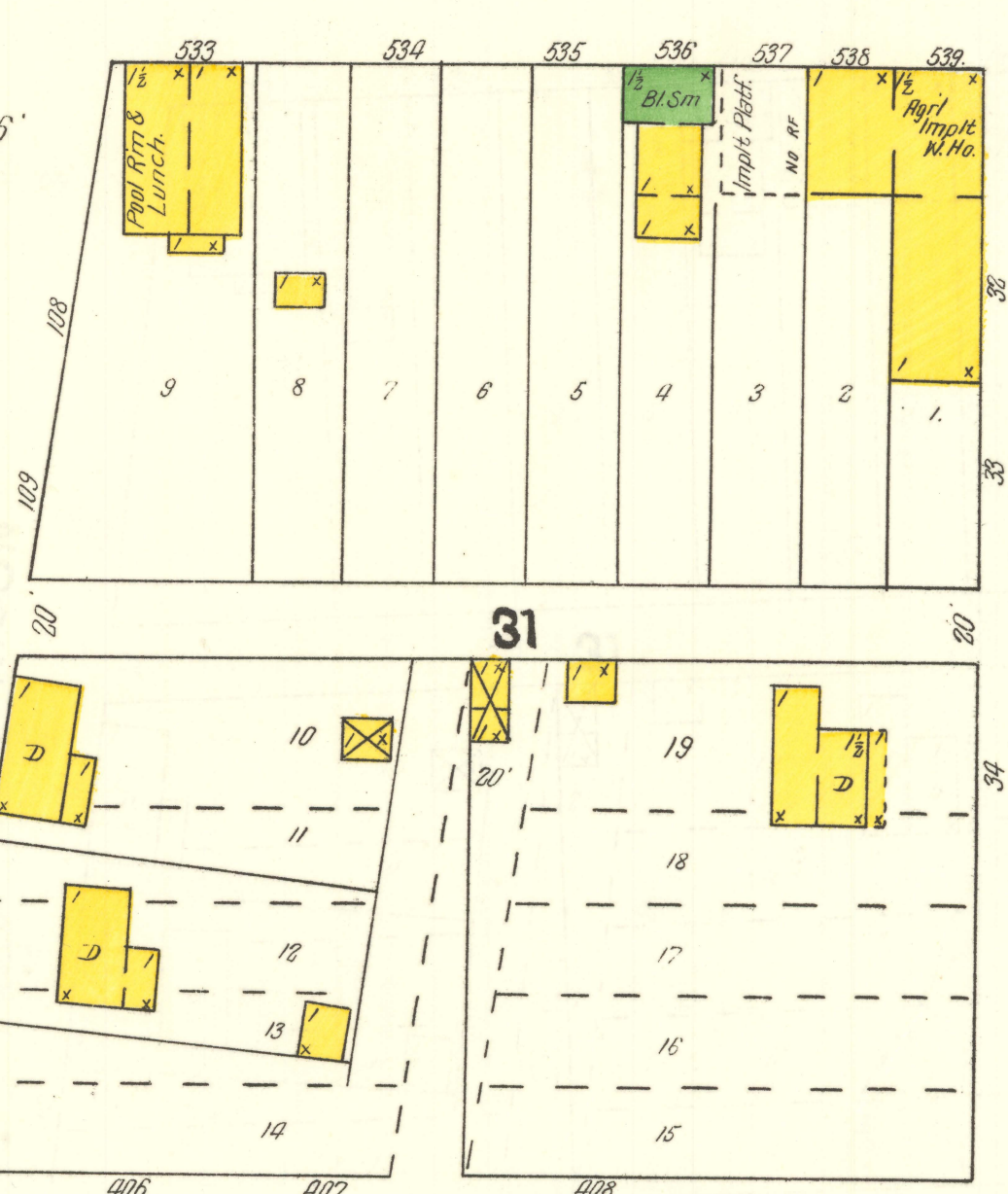
EIGHTH

TOWN HALL

R.R. DEPOT

BEIDLER & ROBINSON'S LUMBER YARD

MORRISON



EIGHTH

Scale of Feet.